

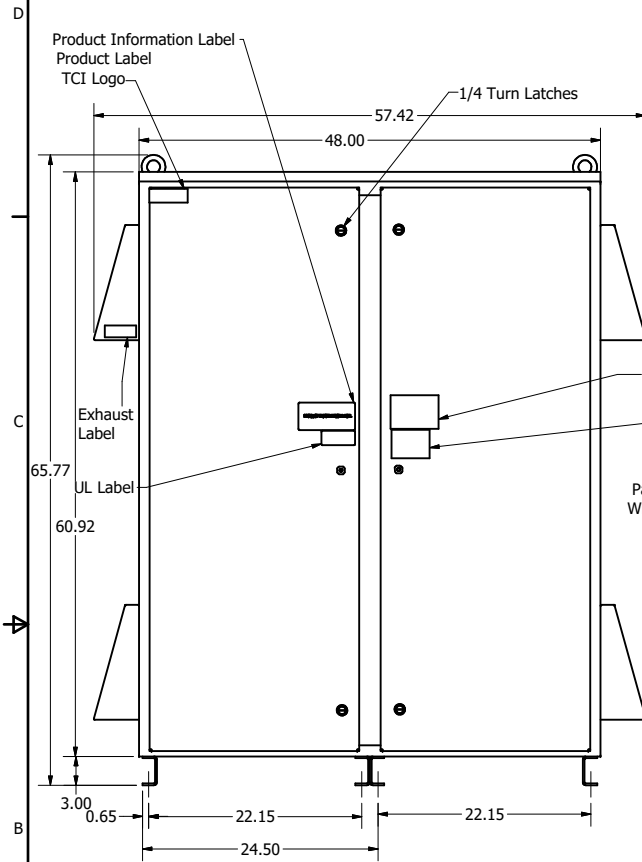
HGP Part Number	HorsePower (HP)	kVar	Harmonic	Voltage (V)	Hz.	Phase
HGP0400AW3----	400	120	5th	480	60	3

Note: For Torque Information See IOM Manual

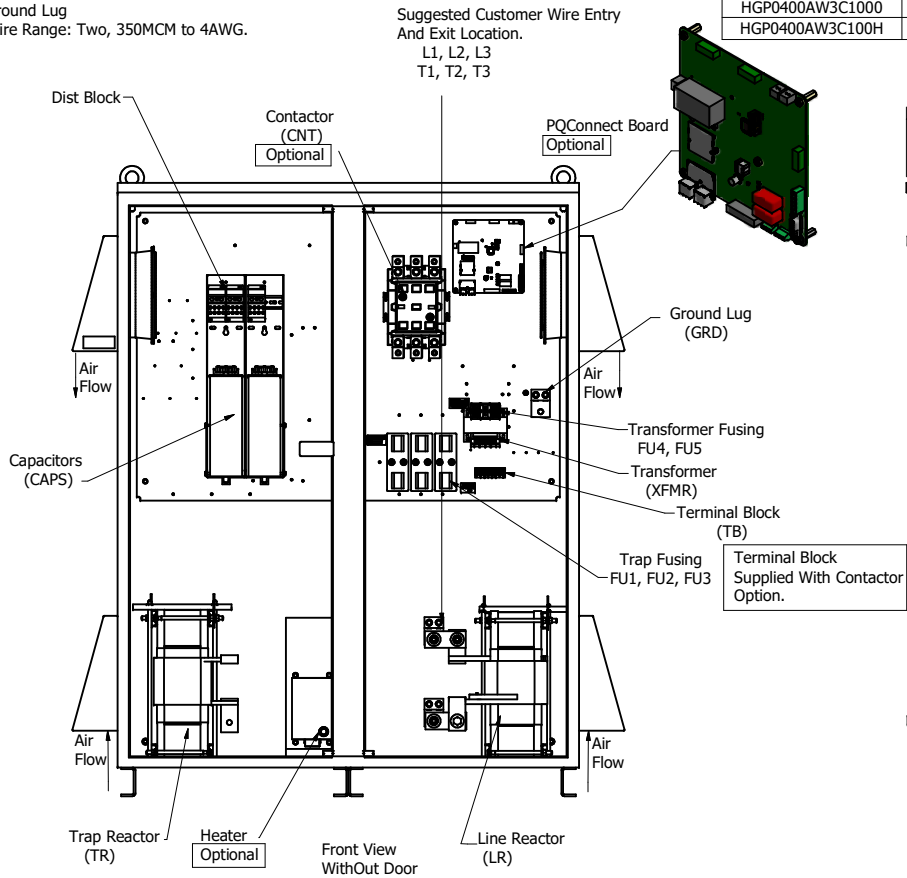
Customer Connections.
L1, L2, L3, T1, T2, T3
Wire Range: Two, 350MCM to 4AWG.

Ground Lug
Wire Range: Two, 350MCM to 4AWG.

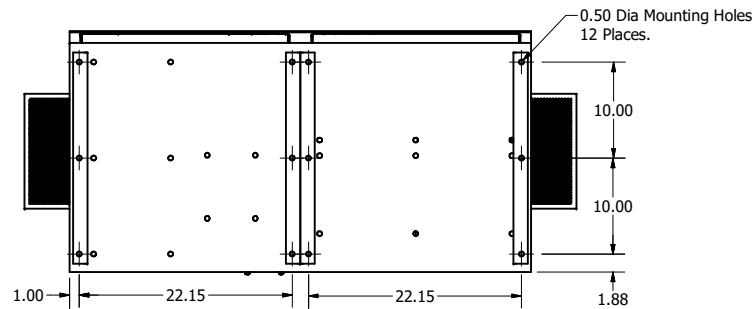
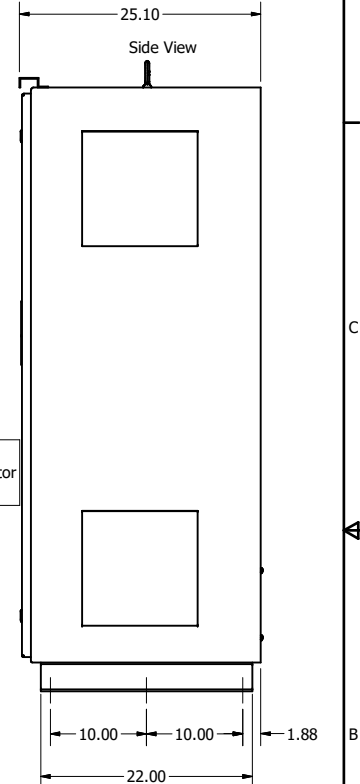
HGP Part Number	Schematic Drawing #	Approx Weight (LBS)
HGP0400AW3S0000	28697-5S	985
HGP0400AW3C0000	28697-5	995
HGP0400AW3C000H	29597-H	1000
HGP0400AW3S1000	29597-PQ1	988
HGP0400AW3C1000	29597-PQ	998
HGP0400AW3C100H	29597-PCH	1005



Front View With Door



Front View WithOut Door



Bottom Of Enclosure

HGP0400AW3----						
Components	S0000	C0000	C000H	S1000	C1000	C100H
Trap Reactor (TR)	x	x	x	x	x	x
Capacitor (Cap)	x	x	x	x	x	x
Trap Fusing, FU1, FU2, FU3	x	x	x	x	x	x
Contactor (CNT)		x	x		x	x
Transformer (XFMR)	x	x	x	x	x	x
XFMR Fusing, FU4, FU5	x	x	x	x	x	x
Fuse Monitor				x		x
Heater			x			x
PQConnect Board				x	x	x

Customer Is Responsible For Installation to Meet All National And Local Electrical Codes.

NOTE: USE ONLY HUBS OR FITTINGS THAT COMPLY WITH UL514B FOR TYPE 3R ENCLOSURES

Material(s) Shall be RoHS Compliant

TCI, LLC CLAIMS PROPRIETARY RIGHTS IN THE MATERIAL HEREIN DISCLOSED. IT IS SUPPLIED WITHOUT PREDJUDICE TO ANY PATENT RIGHTS OF TCI AND MAY NOT BE REPRODUCED OR USED TO MANUFACTURE ANYTHING SHOWN THEREIN WITHOUT WRITTEN PERMISSION FROM TCI.

TOLERANCES (EXCEPT AS NOTED)			
DECIMAL			
.XX	± .25		
.XXX	± .10		
FRACTIONAL			
1/16	± 1/16		
ANGULAR			
± 1°			
REVISED	DATE	BY	
4544, Schematic Updates	11/18/2020	DSW	
4770 Add PQ Harness	6/6/19	DSW	
NO	REVISION	DATE	BY

W132 N10611 Grant Drive
Germantown, WI 53022

TCI

HarmonicGuard Passive
HGP, 400HP, 480/3/60, Type 3R

105568DG

SCALE: 1/8

SHT 1 OF 1