

HGP Open Part Number	Schematic Drawing #	Approx Weight (LBS)
HGP0300AW0S0000	28697-1S	477
HGP0300AW0C0000	28697-1	490
HGP0300AW0S1000	29597-PQ1	479
HGP0300AW0C1000	29597-PQ	492

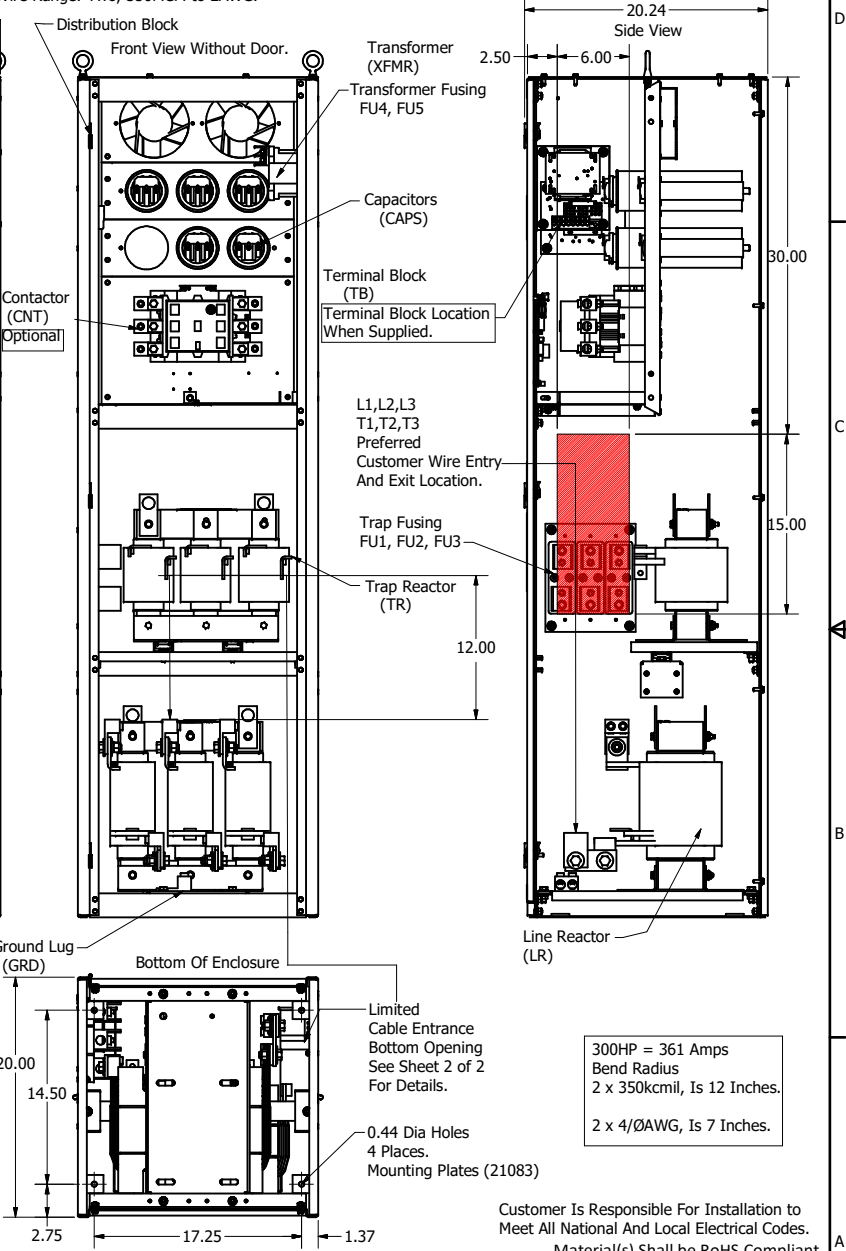
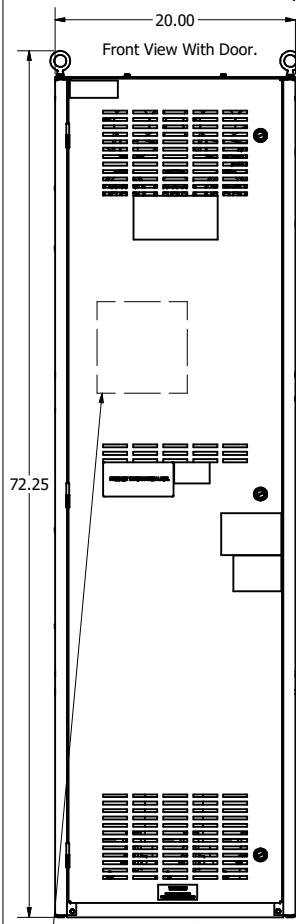
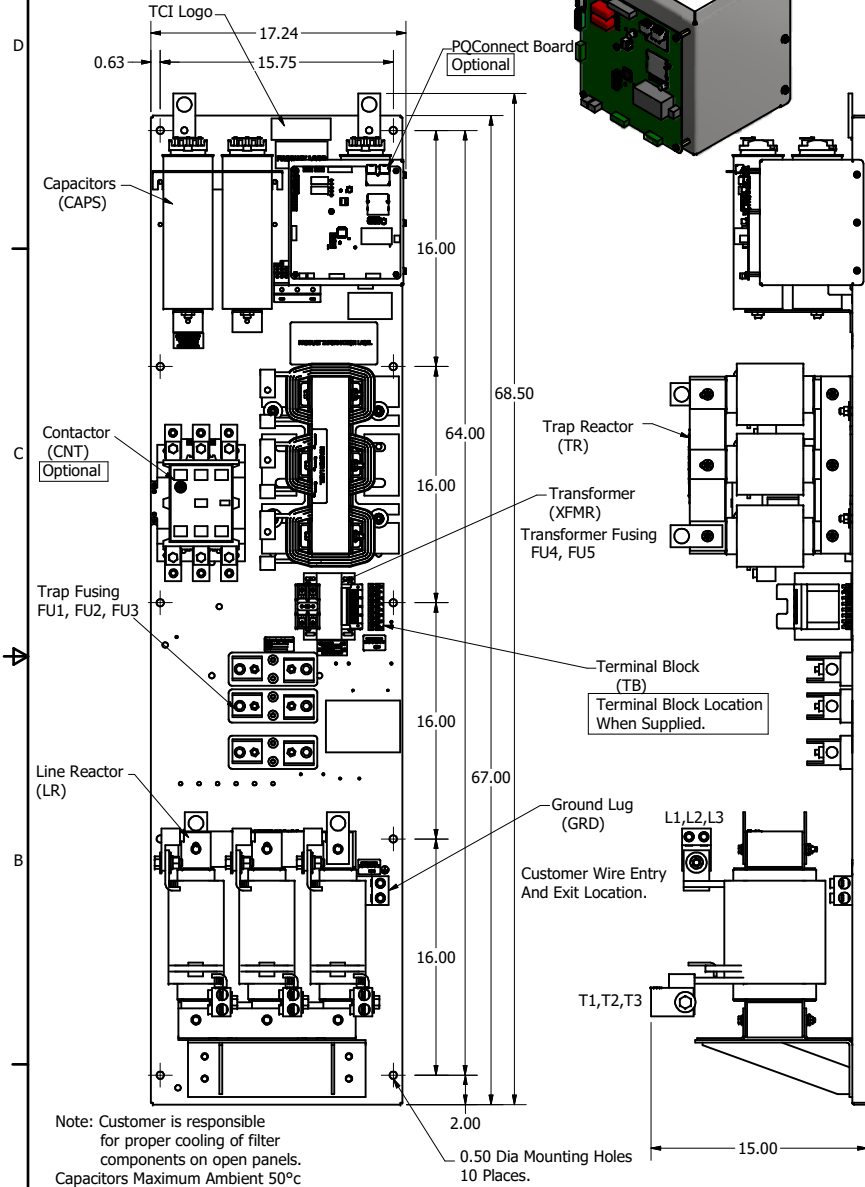
HGP Part Number	HorsePower (HP)	kVar	Harmonic	Voltage (V)	Maximum Amps (A)	Hz.	Phase
HGP0300AW----	300	90	5th	480	361	60	3

Note: For Torque Information See IOM Manual.

Customer Connections.
L1, L2, L3, T1, T2, T3
Wire Range: Two, 350MCM to 2AWG.

HGP Enclosed Type 1 Part Number	Schematic Drawing #	Approx Weight (LBS)
HGP0300AW1S0000	28697-5S	630
HGP0300AW1C0000	28697-5	640
HGP0300AW1S1000	29597-PQ1	633
HGP0300AW1C1000	29597-PQ	643

Ground Lug
Wire Range: Two, 350MCM to 2AWG.



300HP = 361 Amps
Bend Radius
2 x 350kcmil, Is 12 Inches.
2 x 4/0AWG, Is 7 Inches.

Note: Customer is responsible for proper cooling of filter components on open panels. Capacitors Maximum Ambient 50°C

Components	HGP0300AW----			
	0S0000/1S0000	0C0000/1C0000	0S1000/1S1000	0C1000/1C1000
Line Reactor (LR)	X	X	X	X
Trap Reactor (TR)	X	X	X	X
Capacitor (Cap)	X	X	X	X
Trap Fusing, FU1, FU2, FU3	X	X	X	X
Contactor (CNT)		X		X
Transformer (XFMR)	X (Type 1)	X	X	X
XFMR Fusing, FU4, FU5	X (Type 1)	X	X	X
PQConnect Board			X	X

THE INFORMATION AND DESIGNS CONTAINED IN THIS DRAWING ARE CONFIDENTIAL AND THE PROPRIETARY PROPERTY OF ALLIED MOTION TECHNOLOGIES INC. AND ITS SUBSIDIARIES. NEITHER THIS DESIGN NOR ANY INFORMATION CONTAINED IN THIS DRAWING MAY BE REPRODUCED OR DISCLOSED TO OTHERS WITHOUT THE EXPRESS WRITTEN CONSENT OF ALLIED MOTION TECHNOLOGIES INC. AND ITS SUBSIDIARIES.

NO	REVISION	DATE	BY
11	5471, Drawing Updates, Wire Entry Details	1/11/2021	DSW

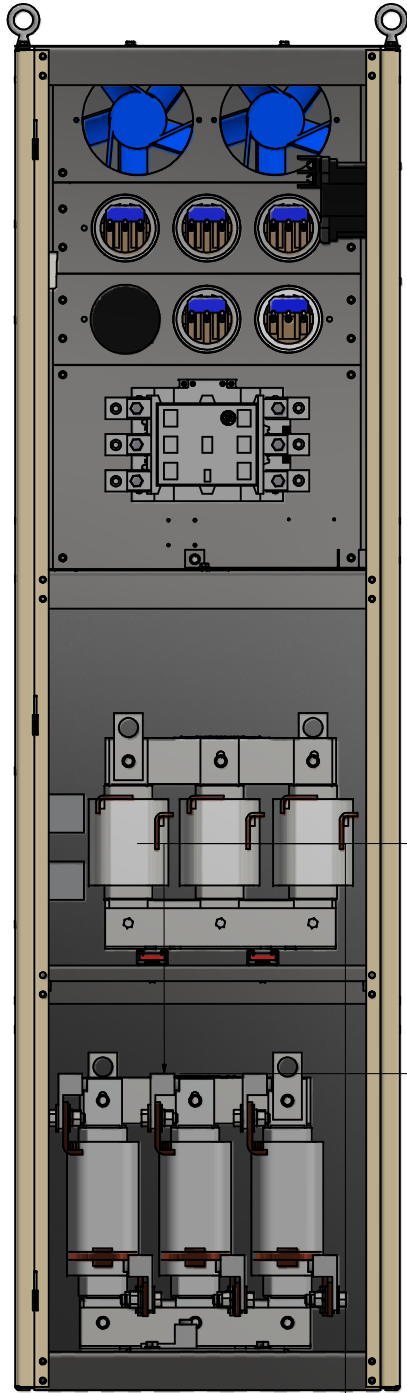
TOLEANCES (EXCEPT AS NOTED)
DECIMAL
.XX ±.25
.XXX ±.10
FRACTIONAL
± 1/16
ANGULAR
± 1°

TCI W132N10611 Grand Drive
Germanstown, WI 53022
© 2021 TCI, LLC
An Allied Motion Company

HGP0300AW----, HarmonicGuard Passive
HGP, 300HP, 480/3/60, Open / Type I

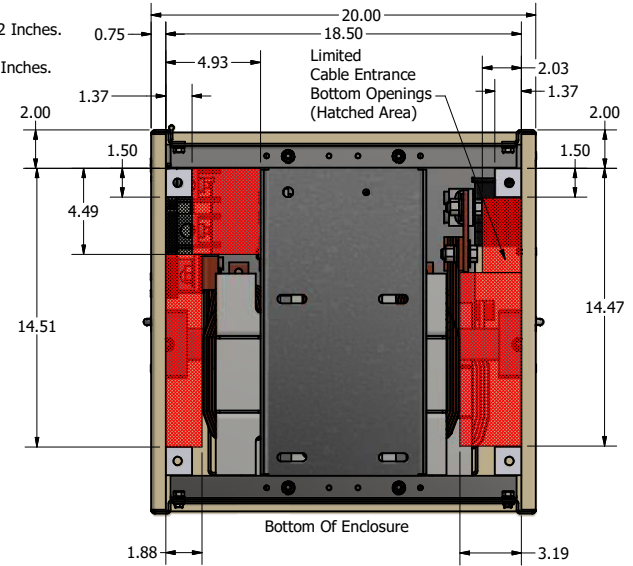
DATE: 4/21/2014
DWG BY: DSW
SCALE: 1/8
DATE: 4/21/2014
DWG NO: 105492DG
SHEET: 1 OF 2

Customer Is Responsible For Installation to Meet All National And Local Electrical Codes.
Material(s) Shall be RoHS Compliant



Limited Cable Entrance Bottom Openings (Hatched Area)

300HP = 361 Amps
 Bend Radius
 2 x 350kcmil, Is 12 Inches.
 2 x 4/0AWG, Is 7 Inches.



Bottom Of Enclosure


Customer Is Responsible For Installation to Meet All National And Local Electrical Codes.

Material(s) Shall be RoHS Compliant

THE INFORMATION AND DESIGNS CONTAINED IN THIS DRAWING ARE CONFIDENTIAL AND THE PROPRIETARY PROPERTY OF ALLIED MOTION TECHNOLOGIES INC. AND ITS SUBSIDIARIES. NEITHER THIS DESIGN NOR ANY INFORMATION CONTAINED IN THIS DRAWING MAY BE REPRODUCED OR DISCLOSED TO OTHERS WITHOUT THE EXPRESS WRITTEN CONSENT OF ALLIED MOTION TECHNOLOGIES INC. AND ITS SUBSIDIARIES.

NO	REVISION	DATE	BY

TOLERANCES (EXCEPT AS NOTED)
DECIMAL
.XX ± .25
.XXX ± .10
FRACTIONAL
± 1/16
ANGULAR
± 1°


 W132N10611 Grant Drive
 Germantown, WI 53022
 © 2021 TCL, LLC
 An *Allied Motion* Company
 HGP, 300HP, 480/3/60, Type 1
 Bottom Entry Detail
 DRN BY: DSW DATE: 12/10/2024 105492DG
 SCALE: 1/5 DRAWN: CSZ
 SHEET 2 OF 2

See Sheet 1, for Revision