

HGP Part Number	HorsePower (HP)	kVar	Harmonic	Voltage (V)	Hz.	Phase
HGP0250CW3----	250	75	5th	600	60	3
HGP0300CW3----	300	90	5th	600	60	3

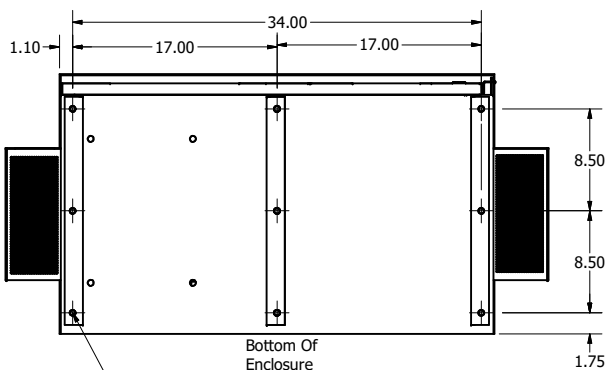
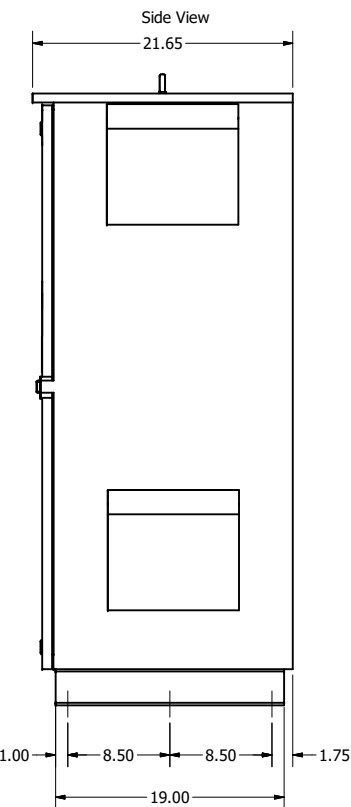
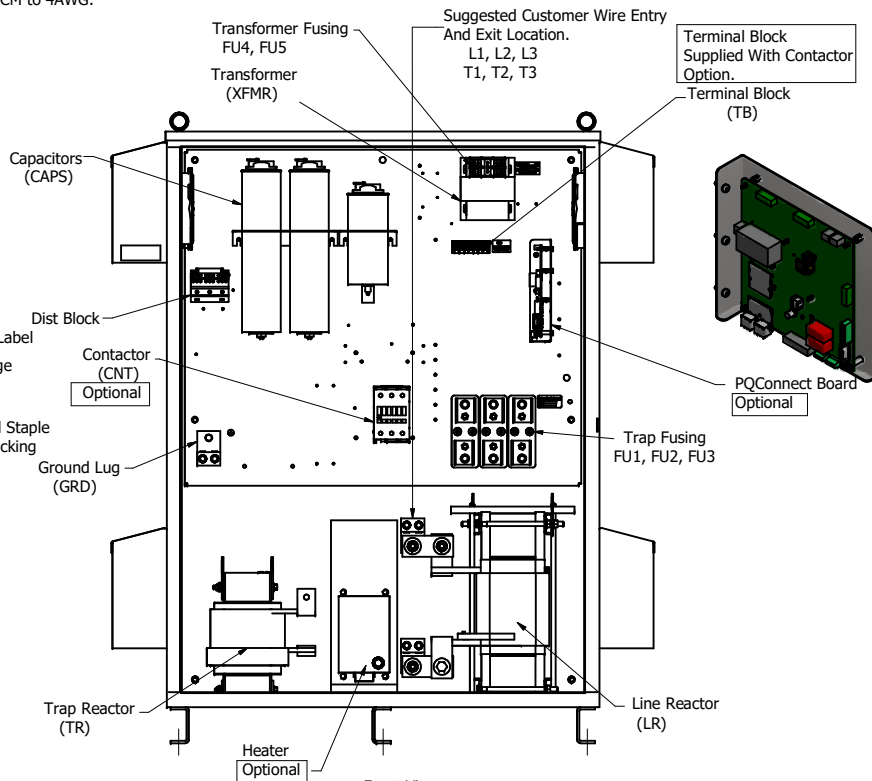
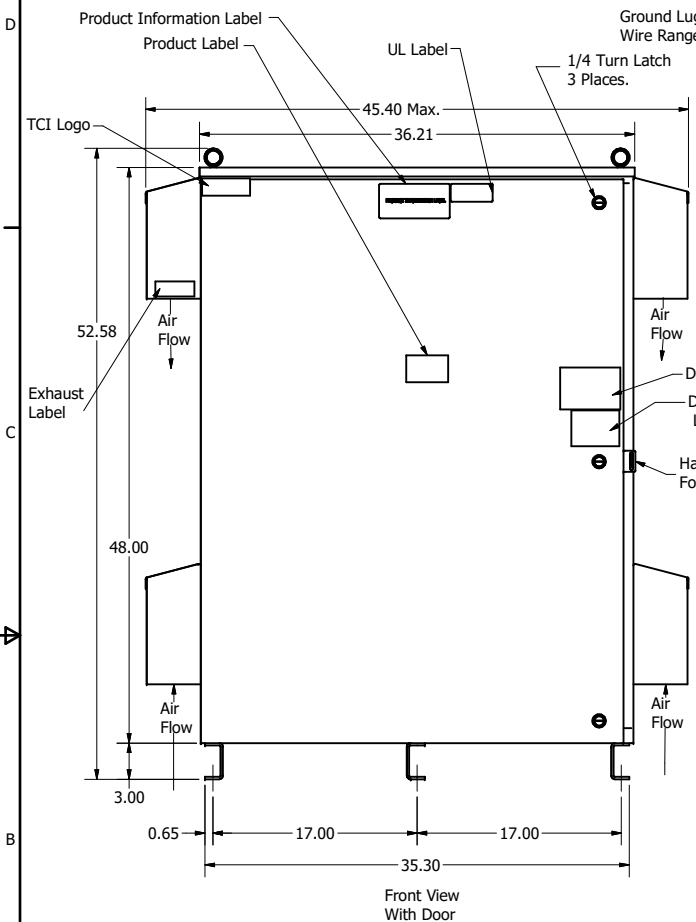
Note: For Torque Information See IOM Manual

Customer Connections.  
L1, L2, L3, T1, T2, T3  
Wire Range: 600MCM to 4AWG.

Ground Lug  
Wire Range: 600MCM to 4AWG.

HGP Part Number	Schematic Drawing #	Approx Weight (LBS)
HGP0250CW3S0000	29474-4	580
HGP0250CW3C0000	29474-5	584
HGP0250CW3C000H	29475-6	590
HGP0250CWCS1000	29474-PQ1	582
HGP0250CW3C1000	29474-PQ	586
HGP0250CW3C100H	29474-PQH	592

HGP Part Number	Schematic Drawing #	Approx Weight (LBS)
HGP0300CW3S0000	29474-4	736
HGP0300CW3C0000	29474-5	744
HGP0300CW3C000H	29474-6	750
HGP0300CWCS1000	29474-PQ1	738
HGP0300CW3C1000	29474-PQ	746
HGP0300CW3C100H	29474-PQH	752



0.50 Dia Mounting Holes 9 Places.

	HGP0250CW3----- HGP0300CW3-----					
Components	S0000	C0000	C000H	S1000	C1000	C100H
Line Reactor (LR)	x	x	x	X	X	X
Trap Reactor (TR)	x	x	x	X	X	X
Capacitor (Cap)	x	x	x	X	X	X
Trap Fusing, FU1, FU2, FU3	x	x	x	X	X	X
Contactor (CNT)		x	x		X	X
Transformer (XFMR)	x	x	x	X	X	X
XFMR Fusing, FU4, FU5	x	x	x	X	X	X
Heater			x			X
PQConnect Board				X	X	X

Customer Is Responsible For Installation to Meet All National And Local Electrical Codes.

NOTE: USE ONLY HUBS OR FITTINGS THAT COMPLY WITH UL514B FOR TYPE 3R ENCLOSURES

Material(s) Shall be RoHS Compliant

TCI, LLC CLAIMS PROPRIETARY RIGHTS IN THE MATERIAL HEREIN DISCLOSED. IT IS SUPPLIED WITHOUT PREJUDICE TO ANY PATENT RIGHTS OF TCI AND MAY NOT BE REPRODUCED OR USED TO MANUFACTURE ANYTHING SHOWN THEREIN WITHOUT WRITTEN PERMISSION FROM TCI.

NO	REVISION	DATE	BY
B	Add PQconnect	9/1/18	DSW

TOLERANCES (EXCEPT AS NOTED)	
DECIMAL	.XX ± .25 .XXX ± .10
FRACTIONAL	± 1/16
ANGULAR	± 1°

**TCI** W132 N10611 Grant Drive  
Germantown, WI 53022

HarmonicGuard Passive  
HGP, 250HP, 300HP, 600/3/60, Type 3R

DATE 2/11/15  
105907DG

SCALE 1/8

SHT 1 OF 1