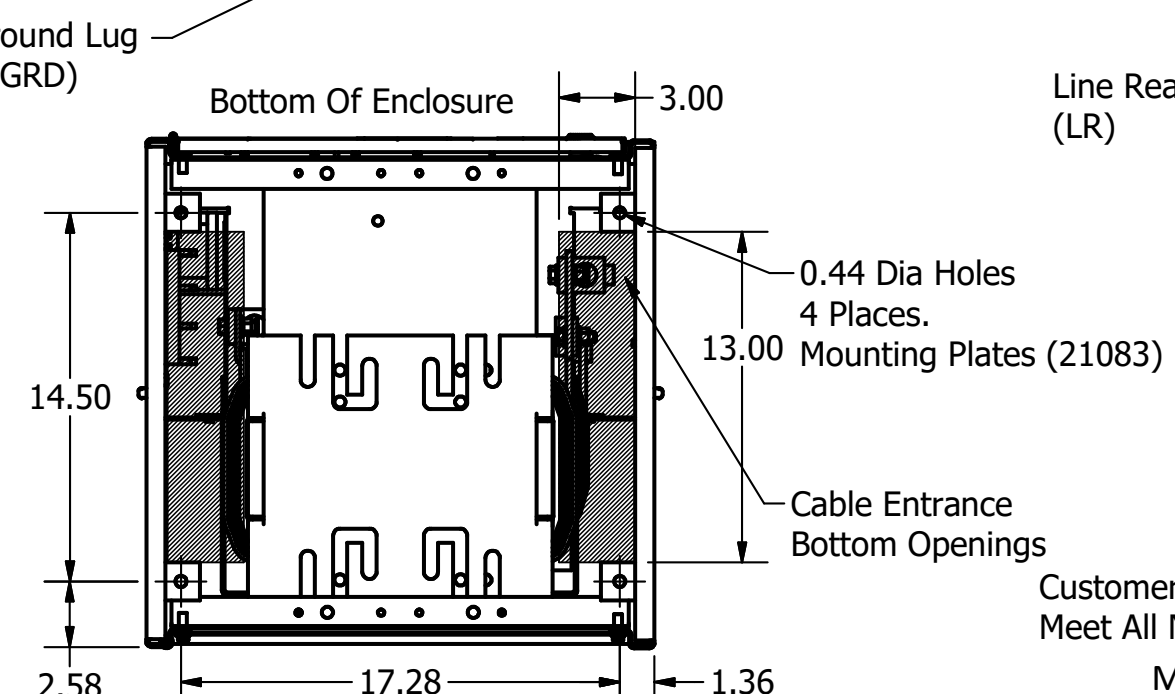
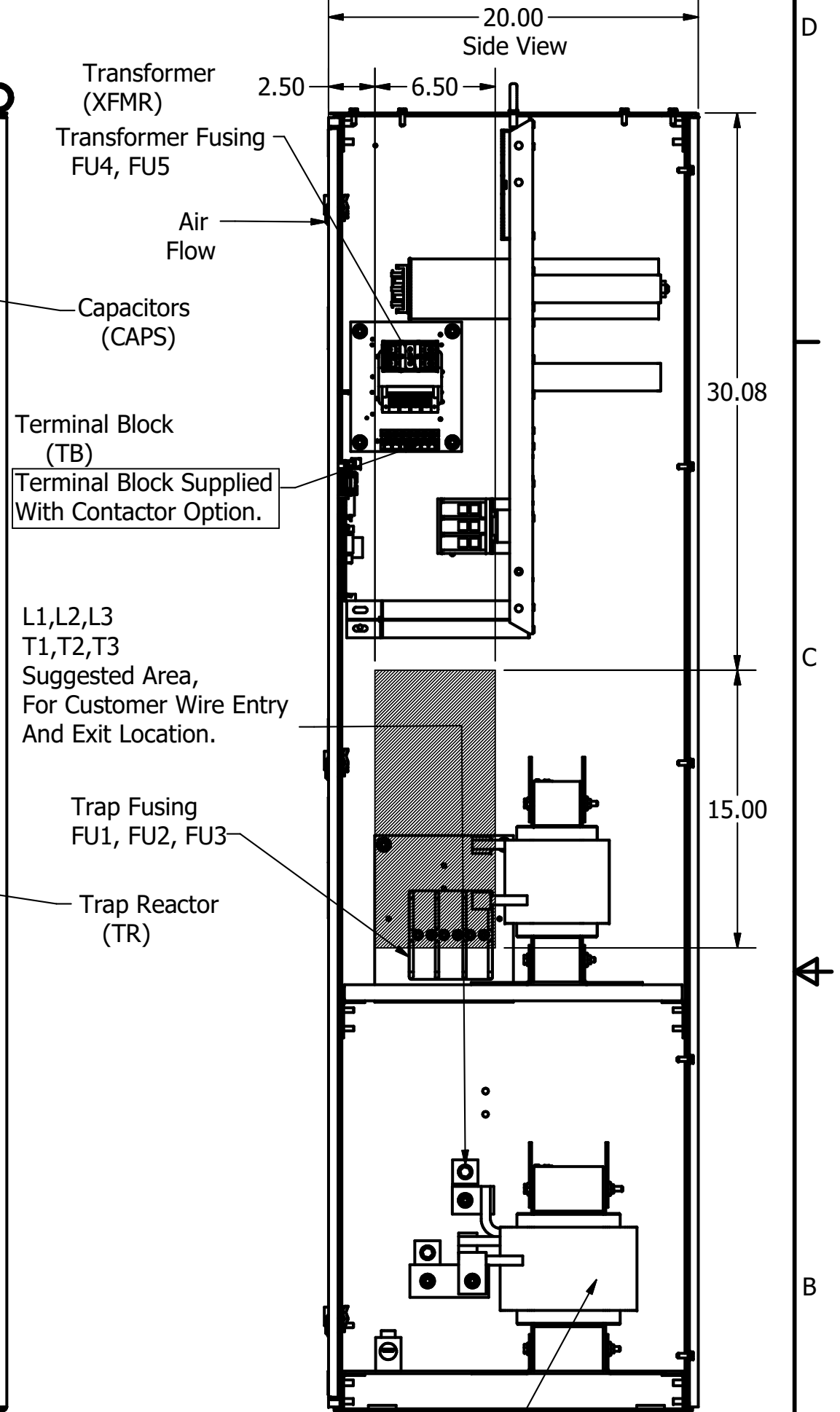
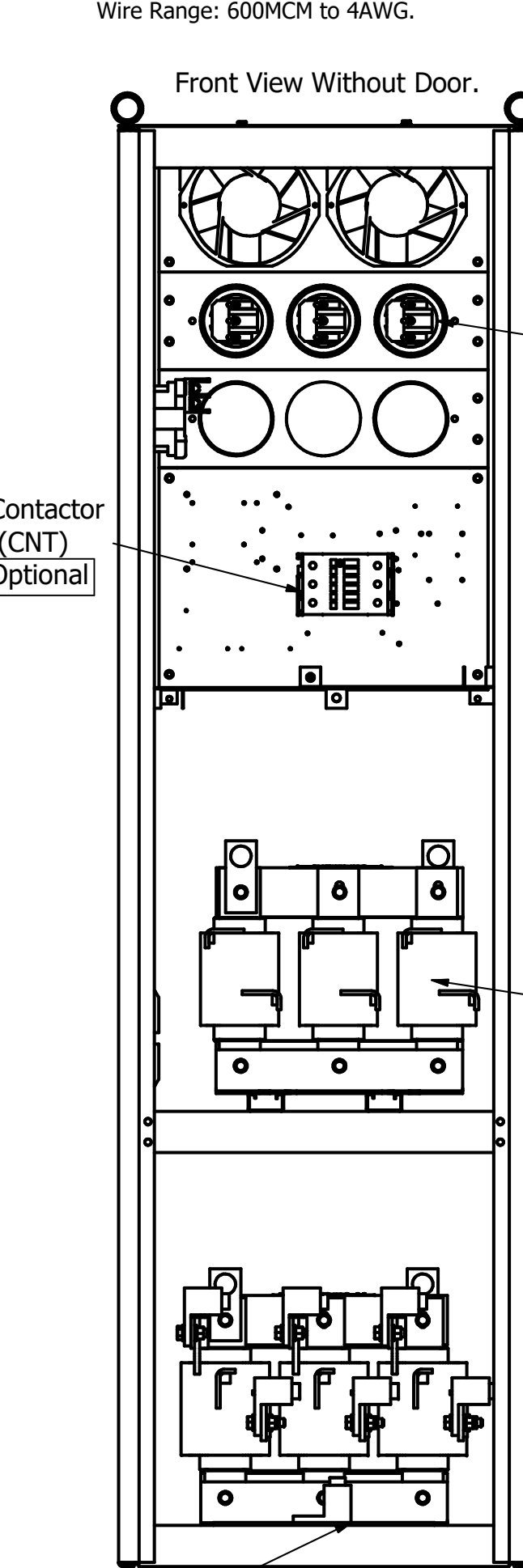
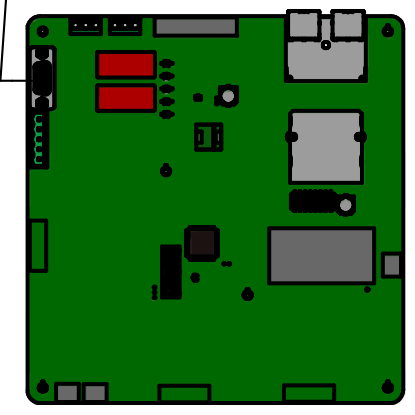
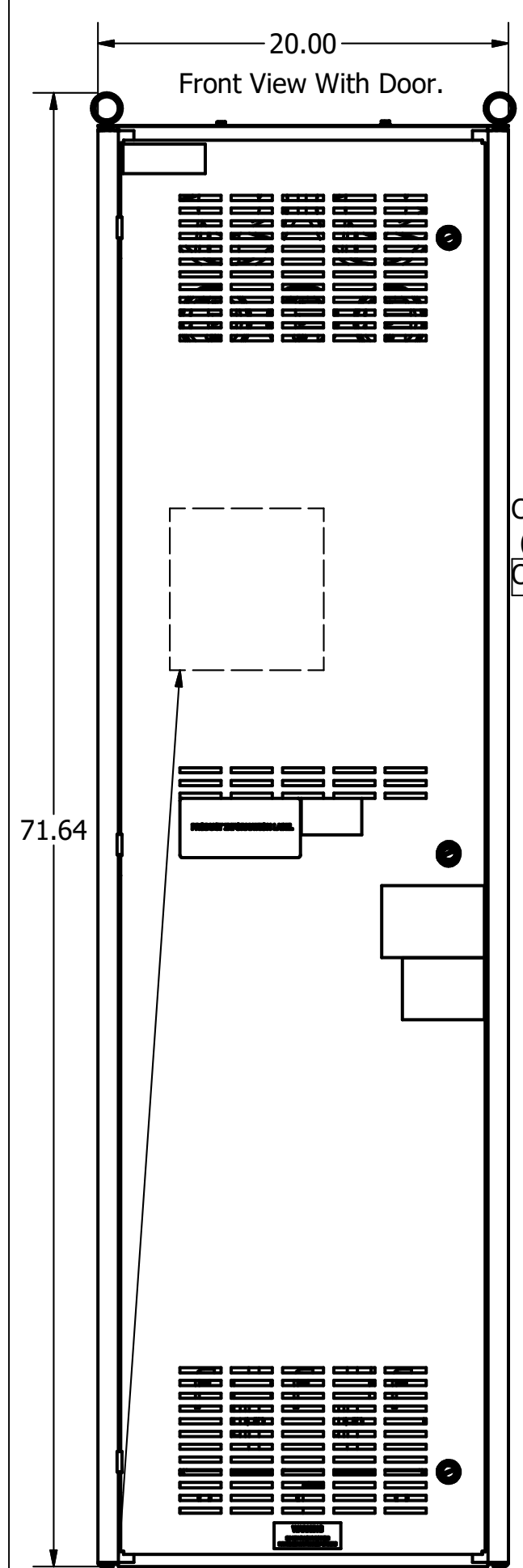
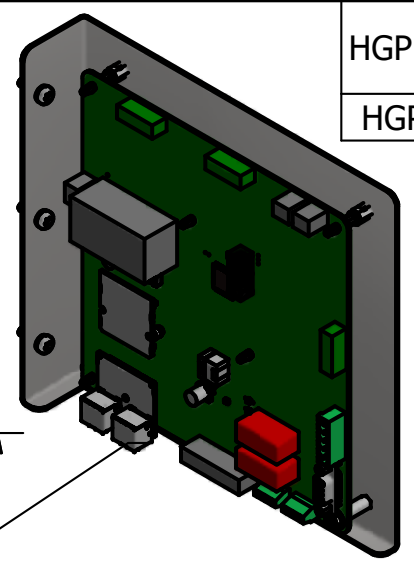
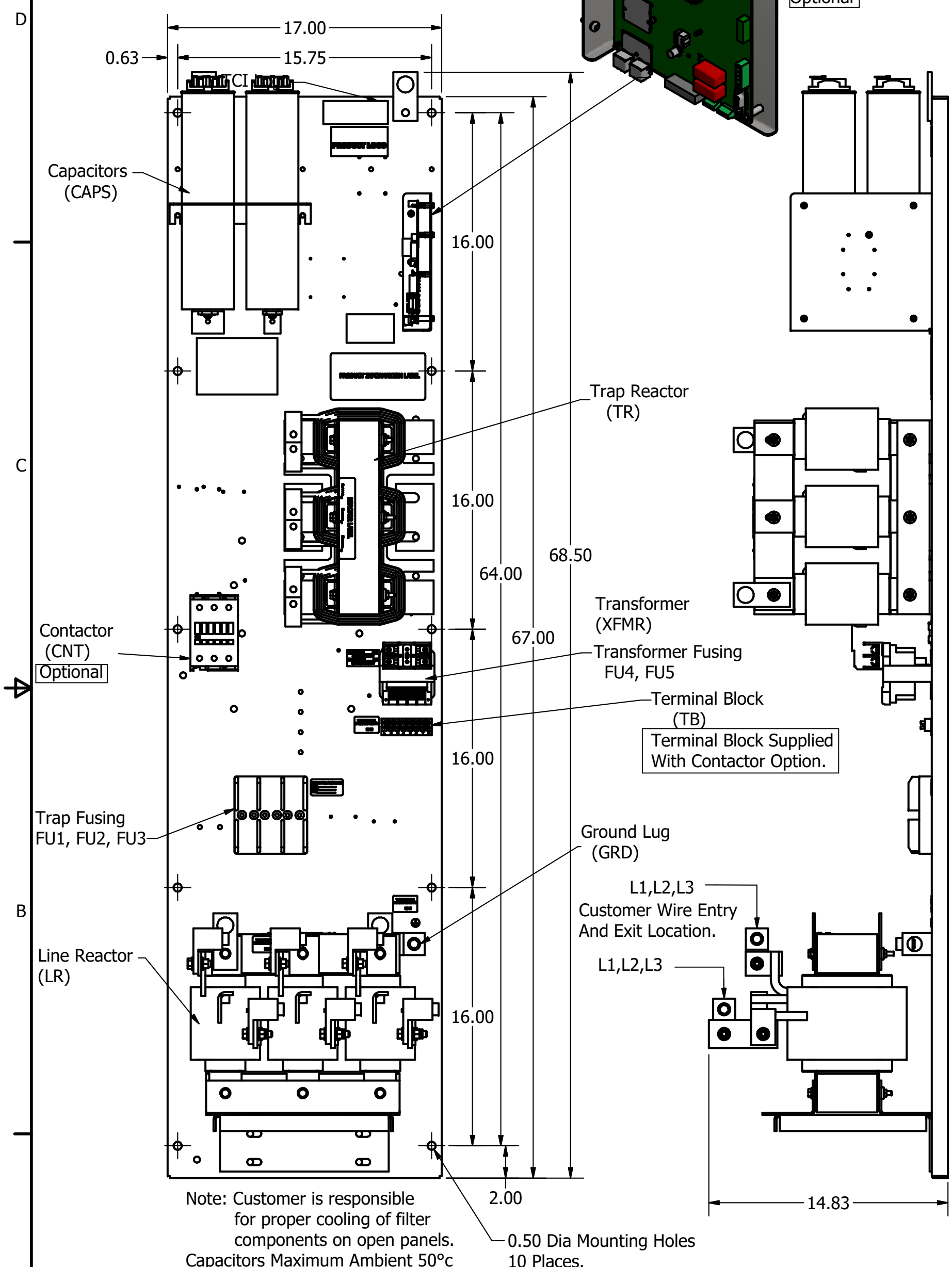


HGP Open Part Number	Schematic Drawing #	Approx Weight (LBS)
HGP0200CW0S0000	29474-3	350
HGP0200CW0C0000	29474-2	360
HGP0200CW0S1000	29474-PQ1	352
HGP0200CW0C1000	29474-PQ	362

HGP Part Number	HorsePower (HP)	kVar	Harmonic	Voltage (V)	Hz.	Phase
HGP0200AW----	200	60	5th	600	60	3

Note: For Torque Information See IOM Manual.  
 Customer Connections.  
 L1, L2, L3, T1, T2, T3  
 Wire Range: 600MCM to 4AWG.  
 Ground Lug  
 Wire Range: 600MCM to 4AWG.

HGP Eclosed Type 1 Part Number	Schematic Drawing #	Approx Weight (LBS)
HGP0200CW1S0000	29474-3	496
HGP0200CW1C0000	29474-2	500
HGP0200CW1S1000	29474-PQ1	497
HGP0200CW1C1000	29474-PQ	501



Customer Is Responsible For Installation to Meet All National And Local Electrical Codes.  
 Material(s) Shall be RoHS Compliant

Components	HGP0200CW----			
	0S0000/1S0000	0C0000/1C0000	0S1000/1S1000	0C1000/1C1000
Line Reactor (LR)	X	X	X	X
Trap Reactor (TR)	X	X	X	X
Capacitor (Cap)	X	X	X	X
Trap Fusing, FU1, FU2, FU3	X	X	X	X
Contactor (CNT)		X		X
Transformer (XFMR)	X	X	X	X
XFMR Fusing, FU4, FU5	X	X	X	X
PQConnect Board			X	X

TCI, LLC CLAIMS PROPRIETARY RIGHTS IN THE MATERIAL HEREIN DISCLOSED. IT IS SUPPLIED WITHOUT PREJUDICE TO ANY PATENT RIGHTS OF TCI AND MAY NOT BE REPRODUCED OR USED TO MANUFACTURE ANYTHING SHOWN THEREIN WITHOUT WRITTEN PERMISSION FROM TCI.	TOLERANCES (EXCEPT AS NOTED)		<b>TCI</b> W132 N10611 Grant Drive Germantown, WI 53022 HarmonicGuard Passive HGP, 200HP, 600/3/60, Open and Type 1
	DECIMAL		
	.XX ± .25 .XXX ± .10		
	FRACTIONAL ± 1/16		
B Add PQ Connect	8/24/18	DSW	DRN BY: DSW DATE: 2/3/15 SCALE: 1/6 APRVD: 105709DG ANGLAR ± 1° SIZE C SHT 1 OF 1
NO REVISION	DATE	BY	