

HGP Open Part Number	Schematic Drawing #	Approx Weight (LBS)
HGP0200AW0S0000	28697-S	345
HGP0200AW0C0000	28697	350
HGP0200AW0S1000	29597-PQ1	347
HGP0200AW0C1000	29597-PQ	352

HGP Part Number	HorsePower (HP)	kVar	Harmonic	Voltage (V)	Maximum Amps (A)	Hz.	Phase
HGP0200AW----	200	60	5th	480	240	60	3

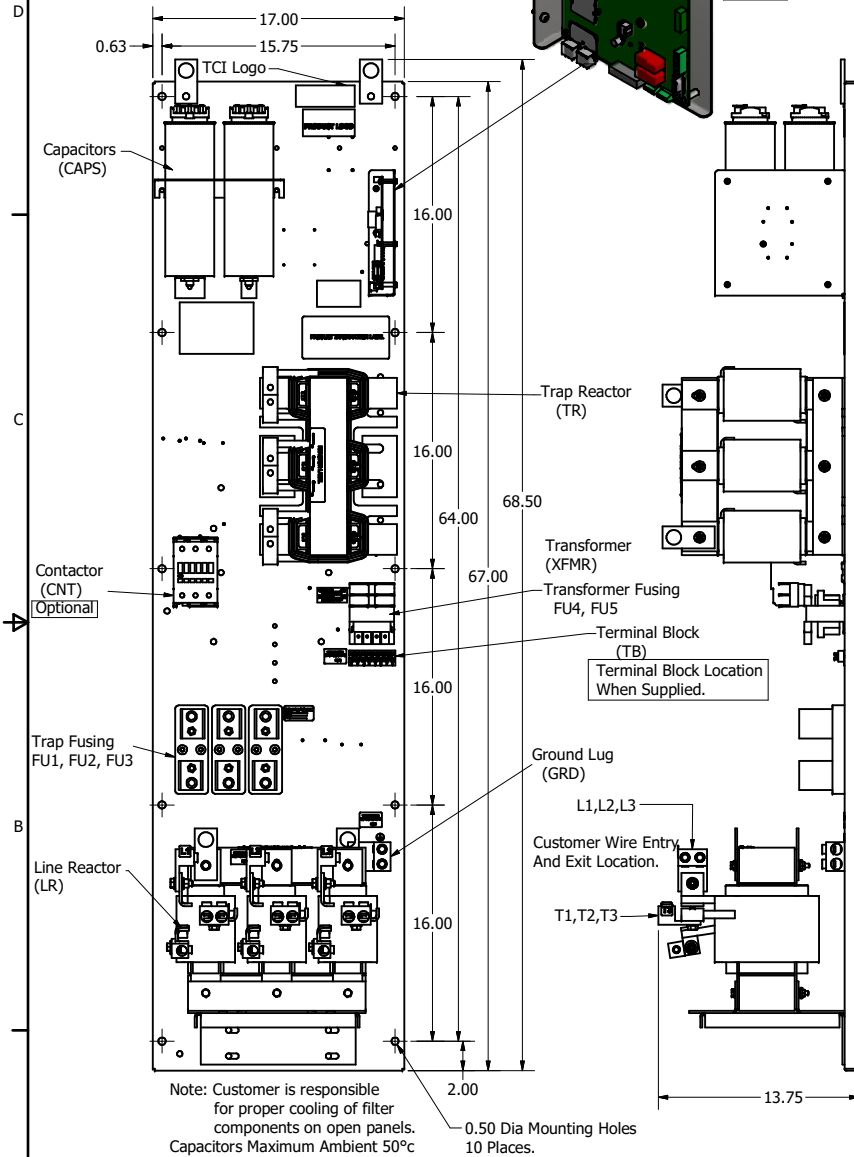
HGP Eclosed Type 1 Part Number	Schematic Drawing #	Approx Weight (LBS)
HGP0200AW1S0000	28697-S	496
HGP0200AW1C0000	28697-4	500
HGP0200AW1S1000	29597-PQ1	497
HGP0200AW1C1000	29597-PQ	501

Note: For Torque Information See IOM Manual.

Customer Connections.

L1, L2, L3, T1, T2, T3
Wire Range: Two, 350MCM to 2AWG.

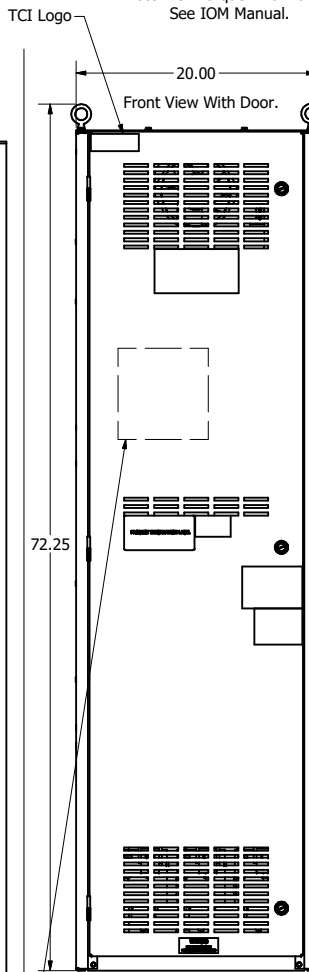
Ground Lug
Wire Range: Two, 350MCM to 2AWG.



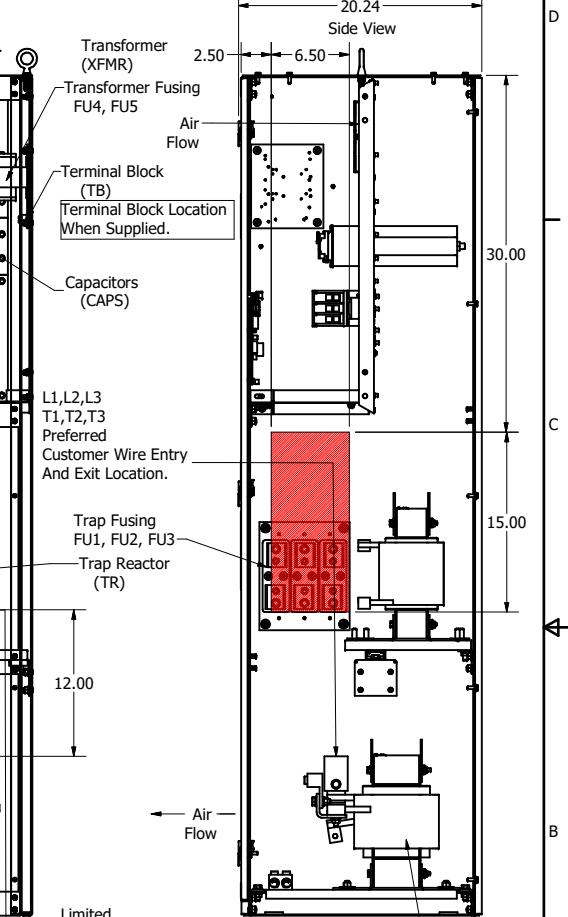
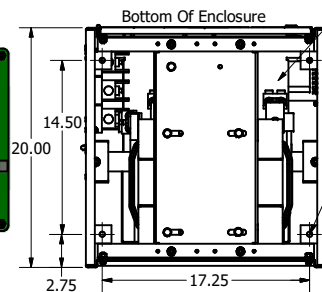
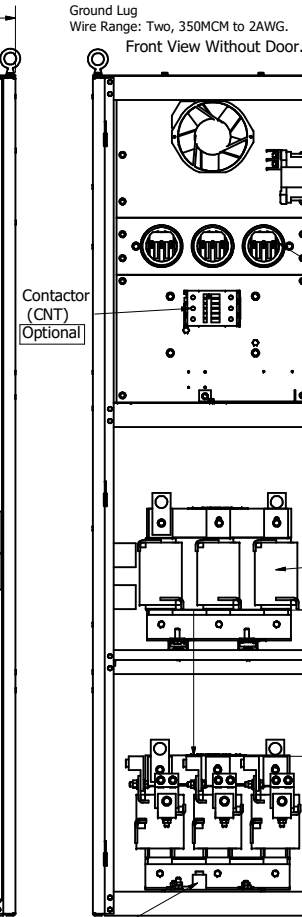
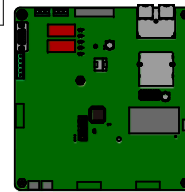
Note: Customer is responsible for proper cooling of filter components on open panels. Capacitors Maximum Ambient 50°C

0.50 Dia Mounting Holes
10 Places.

Components	HGP0200AW----			
	0S0000/1S0000	0C0000/1C0000	0S1000/1S1000	0C1000/1C1000
Line Reactor (LR)	X	X	X	X
Trap Reactor (TR)	X	X	X	X
Capacitor (Cap)	X	X	X	X
Trap Fusing, FU1, FU2, FU3	X	X	X	X
Contactor (CNT)	X	X	X	X
Transformer (XFMR)	X (Type 1)	X	X	X
XFMR Fusing, FU4, FU5	X (Type 1)	X	X	X
PQConnect Board			X	X



PQConnect Board Mounted on Front Door Of Enclosure. Optional



200HP = 240 Amps
Bend Radius
2 x 350kcmil, 1s 12 Inches.
1 x 350kcmil, 1s 12 Inches.
2 x 1/ØAWG, 1s 5 Inches.

Customer Is Responsible For Installation to Meet All National And Local Electrical Codes.

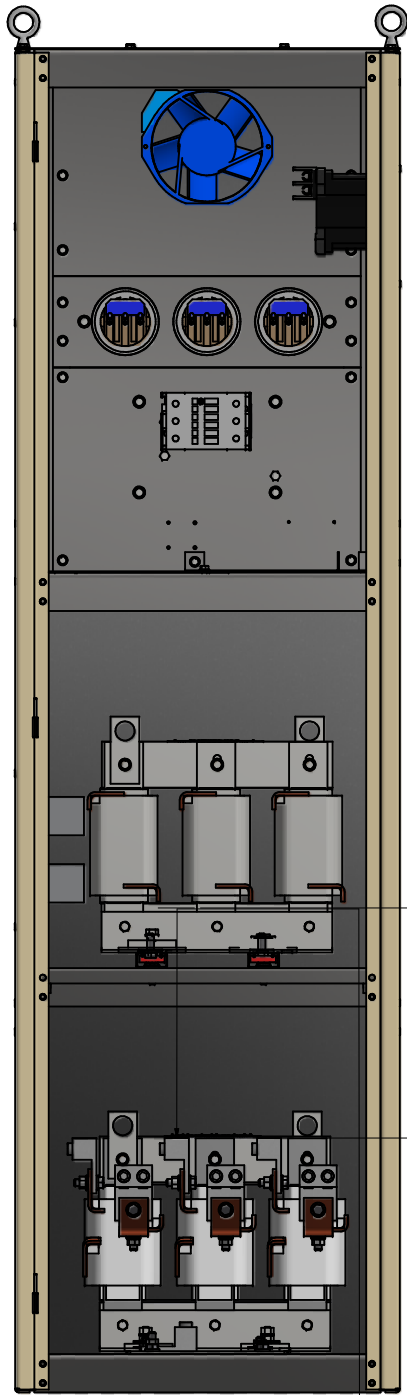
Material(s) Shall be RoHS Compliant

THE INFORMATION AND DESIGN CONTAINED IN THIS DRAWING ARE CONFIDENTIAL AND THE PROPRIETARY PROPERTY OF ALLIED MOTION TECHNOLOGIES INC. AND ITS SUBSIDIARIES. NEITHER THIS DESIGN NOR ANY INFORMATION CONTAINED IN THIS DRAWING MAY BE REPRODUCED OR DISCLOSED TO OTHERS WITHOUT THE EXPRESS WRITTEN CONSENT OF ALLIED MOTION TECHNOLOGIES INC. AND ITS SUBSIDIARIES.

NO	REVISION	DATE	BY
G	5471, Drawing Updates, Wire Entry Details	1/12/2021	DSW

TOLERANCES (EXCEPT AS NOTED)	
DECIMAL	.XX ± .25 .XXX ± .10
FRACTIONAL	± 1/16
ANGULAR	± 1°

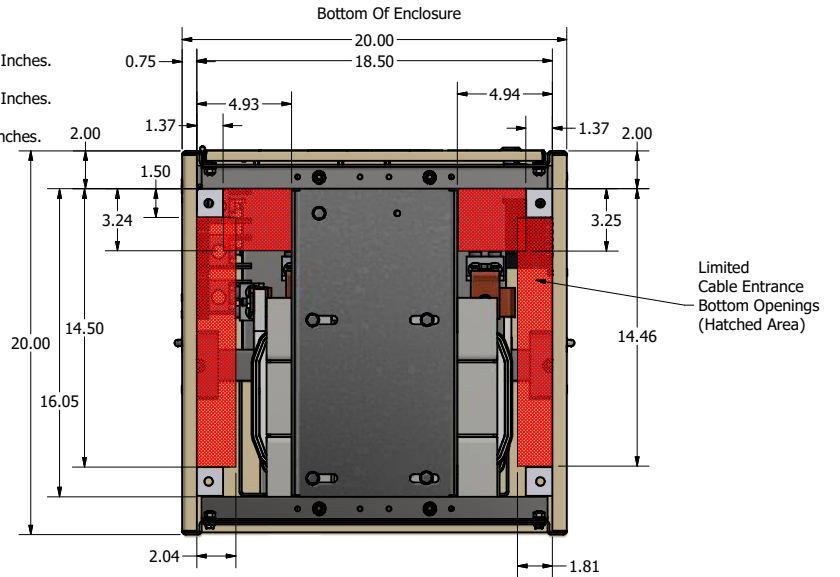
W132N10611 Grant Drive
 Germantown, WI 53022
 © 2021 TCI, LLC
 An Official Motion Company
 HGP0200AW----, HarmonicGuard Passive
 HGP, 200HP, 480/3/60, Open and Type 1
 DESIGNED BY DSW DATE 4/2/2014 DRAWING NO 105490DG
 SCALE 1/6 REVISED BY DATE



200HP = 240 Amps
 Bend Radius
 2 x 350kcmil, Is 12 Inches.
 1 x 350kcmil, Is 12 Inches.
 2 x 1/ØAWG, Is 5 Inches.

12.00

Limited Cable Entrance Bottom Openings (Hatched Area)



Customer Is Responsible For Installation to Meet All National And Local Electrical Codes.

Material(s) Shall be RoHS Compliant

THE INFORMATION AND DESIGNS CONTAINED IN THIS DRAWING ARE CONFIDENTIAL AND THE PROPRIETARY PROPERTY OF ALLIED MOTION TECHNOLOGIES INC. AND ITS SUBSIDIARIES. NEITHER THIS DESIGN NOR ANY INFORMATION CONTAINED IN THIS DRAWING MAY BE REPRODUCED OR DISCLOSED TO OTHERS WITHOUT THE EXPRESS WRITTEN CONSENT OF ALLIED MOTION TECHNOLOGIES INC. AND ITS SUBSIDIARIES.

NO	REVISION	DATE	BY

TOLERANCES (EXCEPT AS NOTED)
DECIMAL
.XX ± .25
.XXX ± .10
FRACTIONAL
± 1/16
ANGULAR
± 1°

 An Official Motion Company	W132N10611 Grant Drive Germantown, WI 53022 © 2021 TCI, LLC
	HGP, 200HP, 480/3/60, Type 1 Bottom Entry Detail
DRN BY: DSW SCALE: 1/5	DATE: 12/14/2024 PART NO: 105490DG REV: 01 SHEET: 2 OF 2

D
C
B
A

D
C
B
A

4 3 2 1

4 3 2 1