

HGP Part Number	HorsePower (HP)	kVar	Harmonic	Voltage (V)	Hz.	Phase
HGP0150CW3----	150	45	5th	600	60	3
HGP0200CW3----	200	60	5th	600	60	3

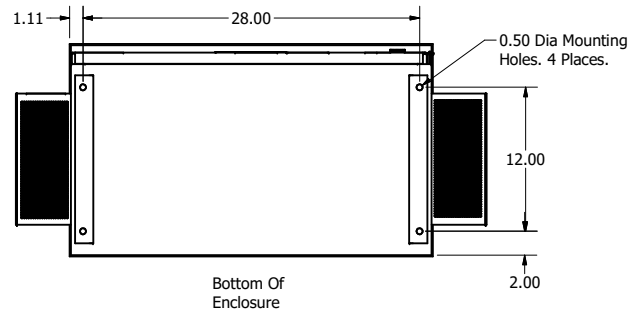
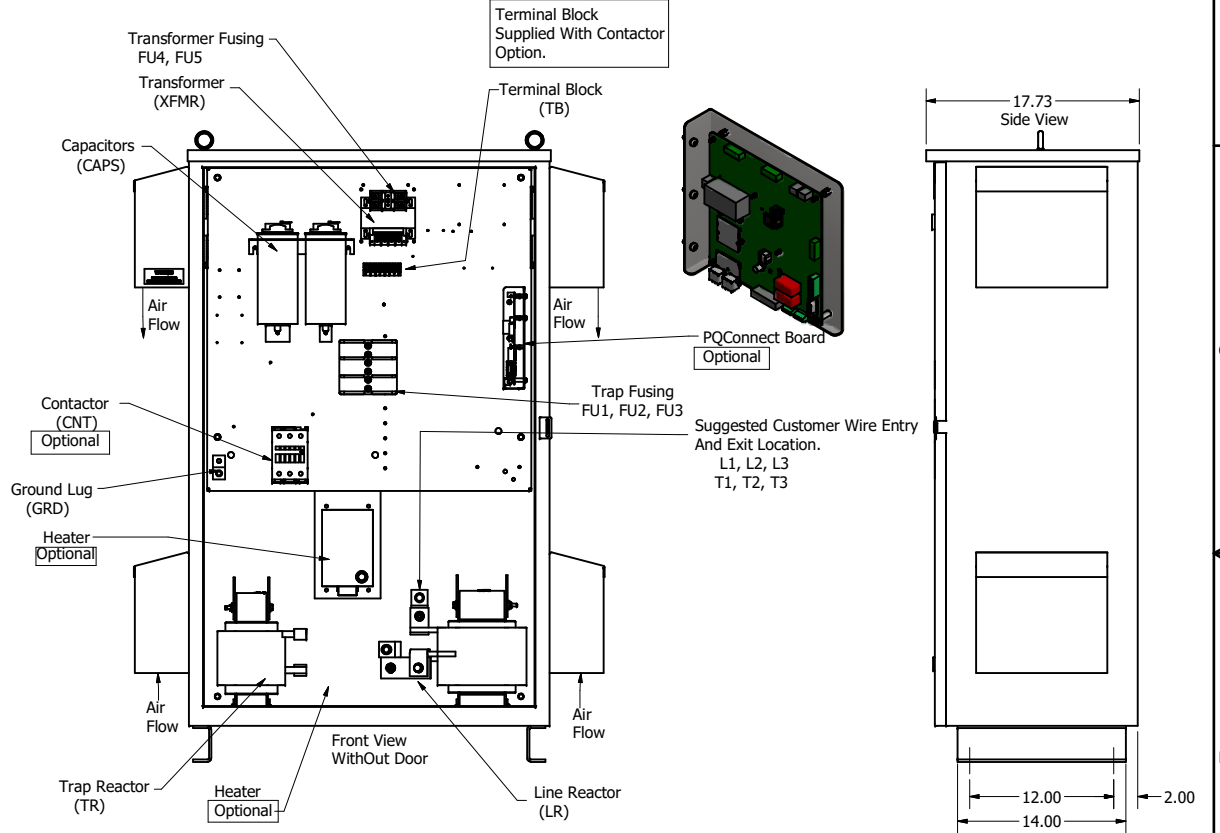
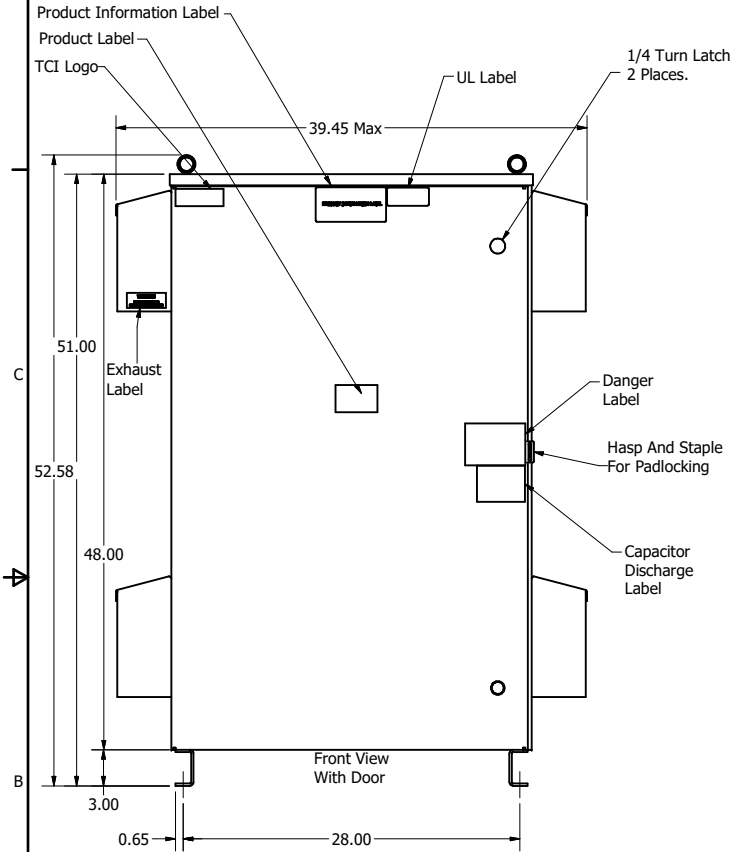
Note: For Torque Information See IOM Manual

Customer Connections.
L1, L2, L3, T1, T2, T3
Wire Range: 250MCM to 6AWG.

Ground Lug
Wire Range: 250MCM to 6AWG.

HGP Part Number	Schematic Drawing #	Approx Weight (LBS)
HGP0150CW3S0000	29474-4	432
HGP0150CW3C0000	29474-5	434
HGP0150CW3C000H	29475-6	440
HGP0150CWCS1000	29474-PQ1	434
HGP0150CW3C1000	29474-PQ	436
HGP0150CW3C100H	29474-PQH	442

HGP Part Number	Schematic Drawing #	Approx Weight (LBS)
HGP0200CW3S0000	29474-4	480
HGP0200CW3C0000	29474-5	484
HGP0200CW3C000H	29474-6	490
HGP0200CWCS1000	29474-PQ1	482
HGP0200CW3C1000	29474-PQ	486
HGP0200CW3C100H	29474-PQH	492



Components	HGP0150CW3----			HGP0200CW3----		
	S0000	C0000	C000H	S1000	C1000	C100H
Line Reactor (LR)	x	x	x	X	X	X
Trap Reactor (TR)	x	x	x	X	X	X
Capacitor (Cap)	x	x	x	X	X	X
Trap Fusing, FU1, FU2, FU3	x	x	x	X	X	X
Contactor (CNT)		x	x		X	X
Transformer (XFMR)	x	x	x	X	X	X
XFMR Fusing, FU4, FU5	x	x	x	X	X	X
Heater			x			X
PQConnect Board				X	X	X

Customer Is Responsible For Installation to Meet All National And Local Electrical Codes.

NOTE: USE ONLY HUBS OR FITTINGS THAT COMPLY WITH UL514B FOR TYPE 3R ENCLOSURES

Material(s) Shall be RoHS Compliant

TCI, LLC CLAIMS PROPRIETARY RIGHTS IN THE MATERIAL HEREIN DISCLOSED. IT IS SUPPLIED WITHOUT PREJUDICE TO ANY PATENT RIGHTS OF TCI AND MAY NOT BE REPRODUCED OR USED TO MANUFACTURE ANYTHING SHOWN THEREIN WITHOUT WRITTEN PERMISSION FROM TCI.	TOLERANCES (EXCEPT AS NOTED)			W132 N10611 Grant Drive Germantown, WI 53022 HarmonicGuard Passive HGP, 150HP, 200HP, 600/3/60, Type 3R
	DECIMAL			
	.XX ±.25 .XXX ±.10			
	FRACTIONAL			
B Add PQconnect NO REVISION	8/31/18 DATE	DSW BY	± 1/16 ANGLAR	DWN BY DATE 2/11/15 SCALE 1/8 105906DG SHEET 1 OF 1