

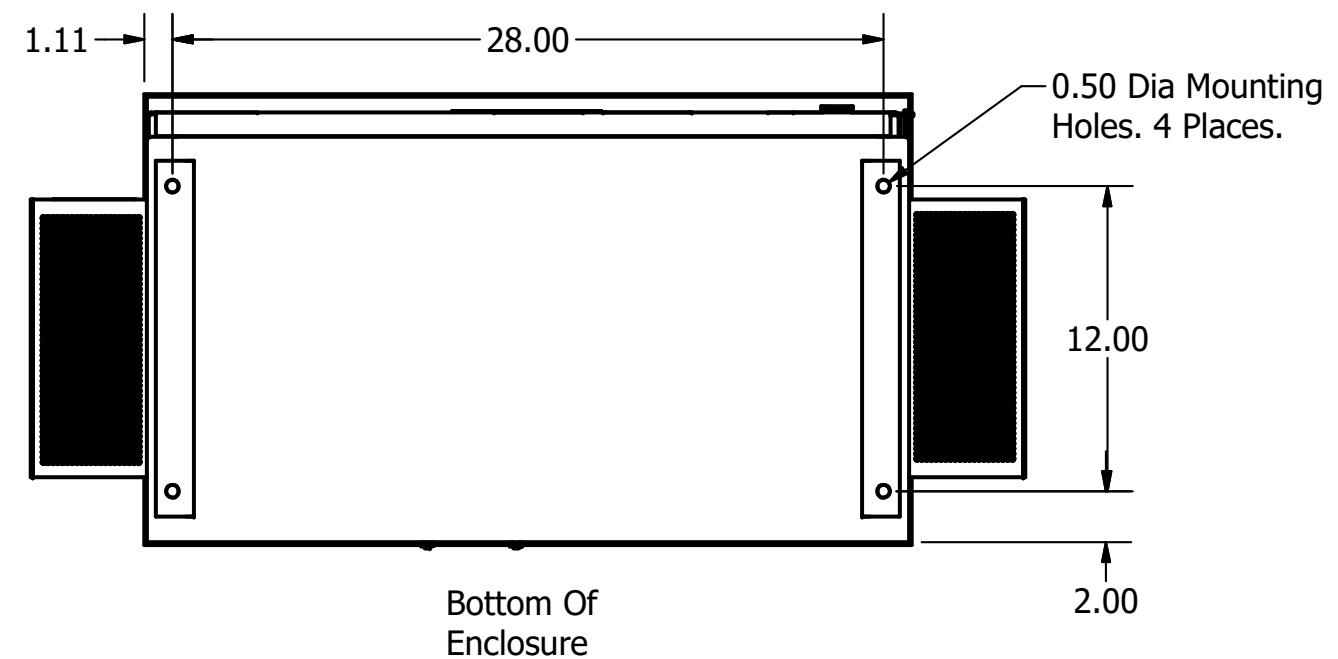
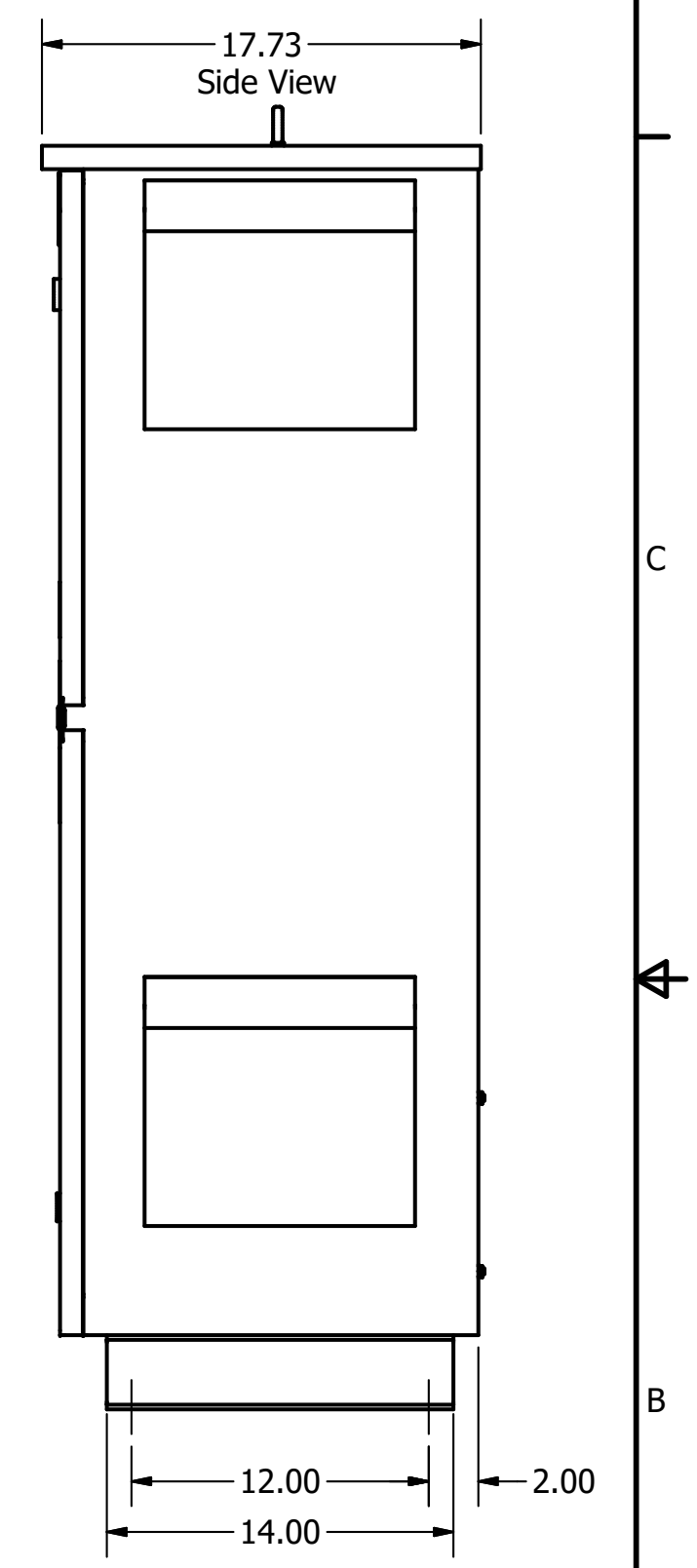
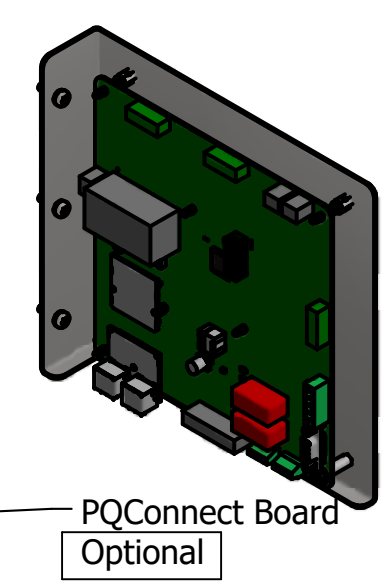
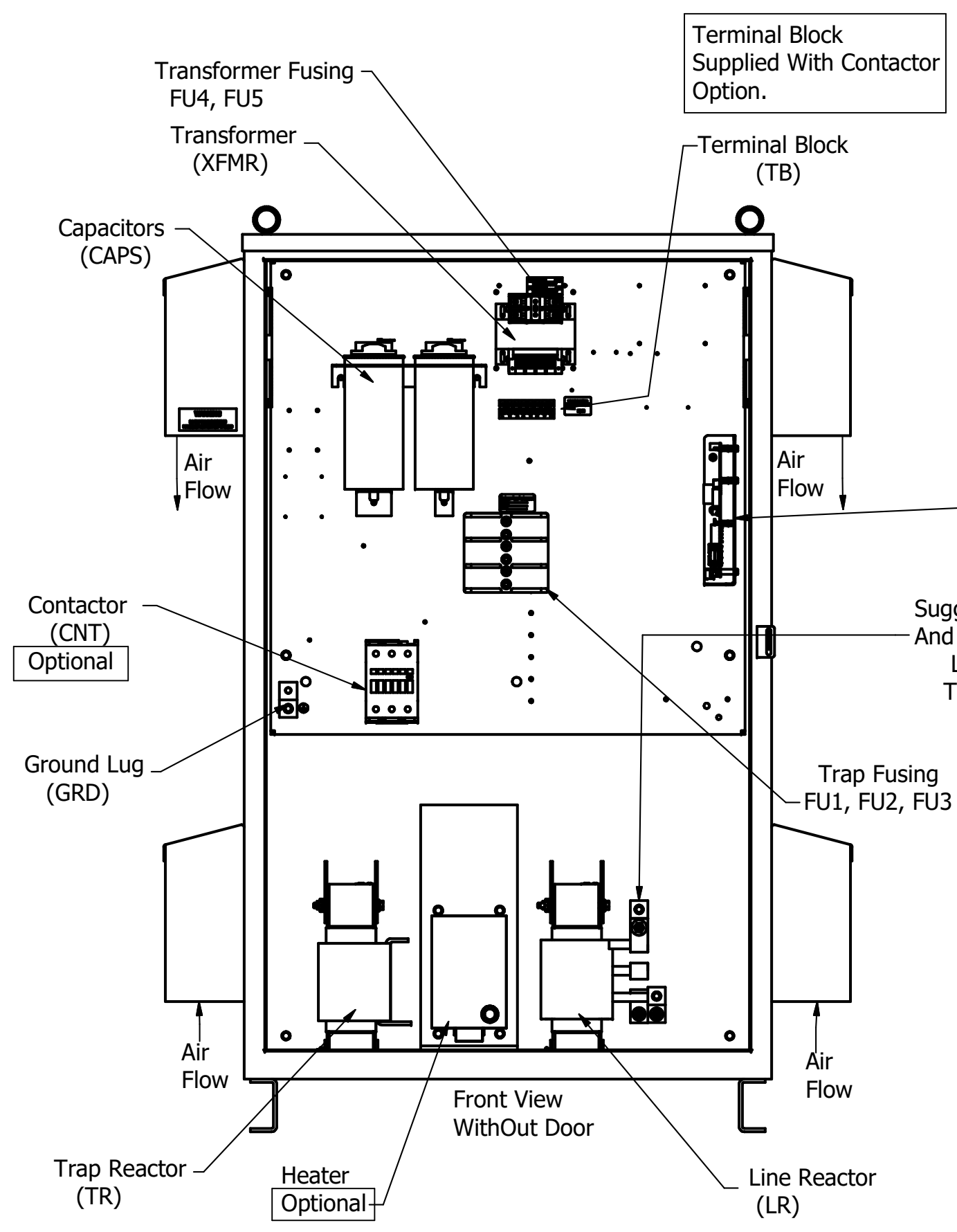
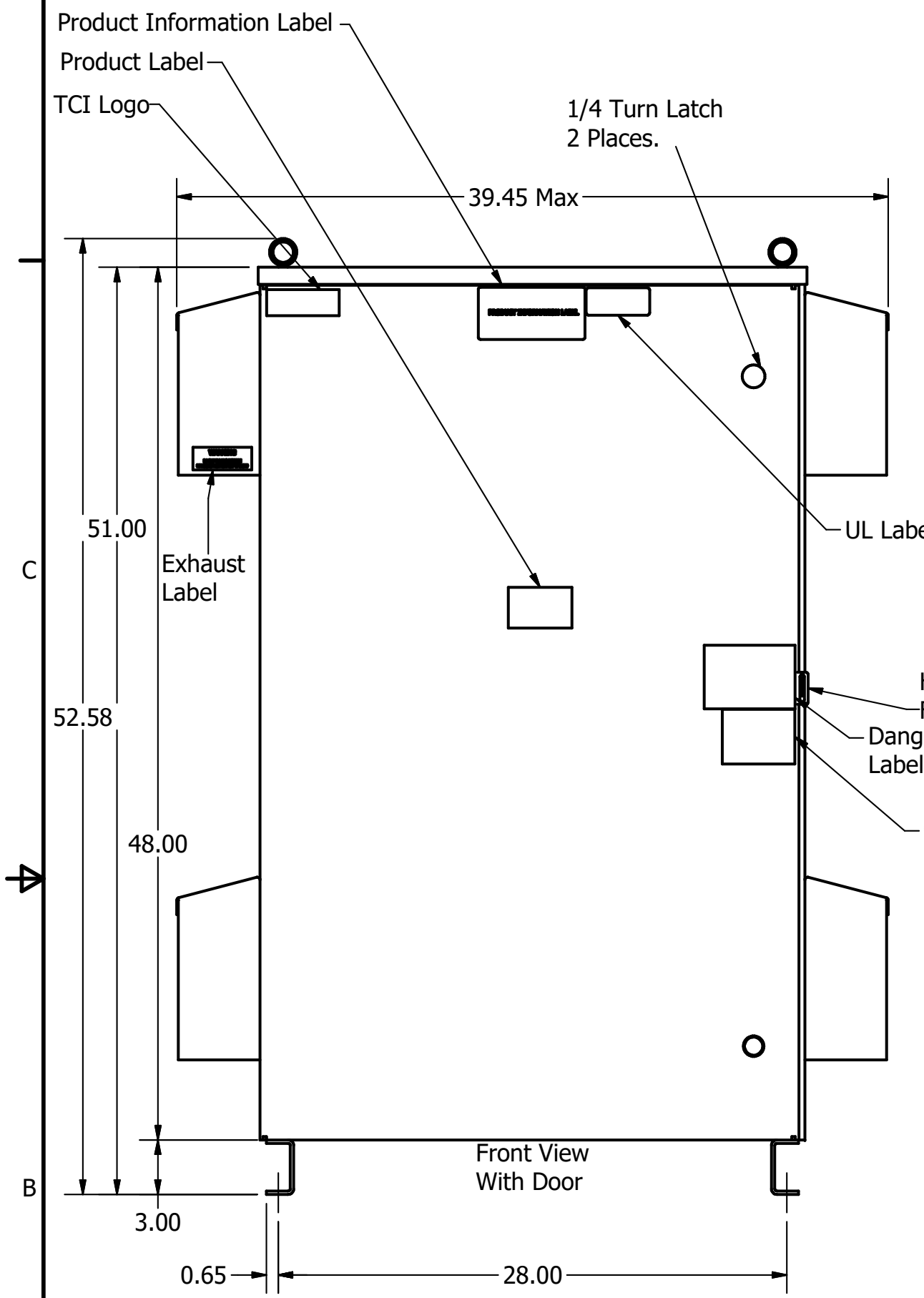
HGP Part Number	HorsePower (HP)	kVar	Harmonic	Voltage (V)	Hz.	Phase
HGP0150AW3----	150	45	5th	480	60	3

Note: For Torque Information See IOM Manual

Customer Connections.
L1, L2, L3, T1, T2, T3
Wire Range: 250MCM to 6AWG.

Ground Lug
Wire Range: 250MCM to 6AWG.

HGP Part Number	Schematic Drawing #	Approx Weight (LBS)
HGP0150AW3S0000	28697-4S	400
HGP0150AW3C0000	28697-4	405
HGP0150AW3C000H	28697-4H	410
HGP0150AW3S1000	29597-PQ1	403
HGP0150AW3C1000	29597-PQ	408
HGP0150AW3C100H	29597-PQH	412



HGP0150AW3-----						
Components	S0000	C0000	C000H	S1000	C1000	C100H
Line Reactor (LR)	x	x	x	x	x	x
Trap Reactor (TR)	x	x	x	x	x	x
Capacitor (Cap)	x	x	x	x	x	x
Trap Fusing, FU1, FU2, FU3	x	x	x	x	x	x
Contactor (CNT)		x	x		x	x
Transformer (XFMR)	x	x	x	x	x	x
XFMR Fusing, FU4, FU5	x	x	x	x	x	x
Heater			x			x
PQConnect Board				x	x	x

Customer Is Responsible For Installation to Meet All National And Local Electrical Codes.

NOTE: USE ONLY HUBS OR FITTINGS THAT COMPLY WITH UL514B FOR TYPE 3R ENCLOSURES

Material(s) Shall be RoHS Compliant

TCI, LLC CLAIMS PROPRIETARY RIGHTS IN THE MATERIAL HEREIN DISCLOSED. IT IS SUPPLIED WITHOUT PREJUDICE TO ANY PATENT RIGHTS OF TCI AND MAY NOT BE REPRODUCED OR USED TO MANUFACTURE ANYTHING SHOWN THEREIN WITHOUT WRITTEN PERMISSION FROM TCI.	TOLERANCES (EXCEPT AS NOTED)		W132 N10611 Grant Drive Germantown, WI 53022 HarmonicGuard Passive HGP, 150HP, 480/3/60, Type 3R
	DECIMAL		
	.XX ± .25 .XXX ± .10		
	FRACTIONAL ± 1/16		
C Add PQConnect	6/11/18	DSW	DRN BY: DSW DATE: 1/16/14
NO REVISION	DATE	BY	SCALE: 1/8 APRVD: 105563DG
			SIZE C SHT 1 OF 1