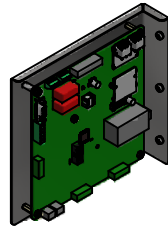


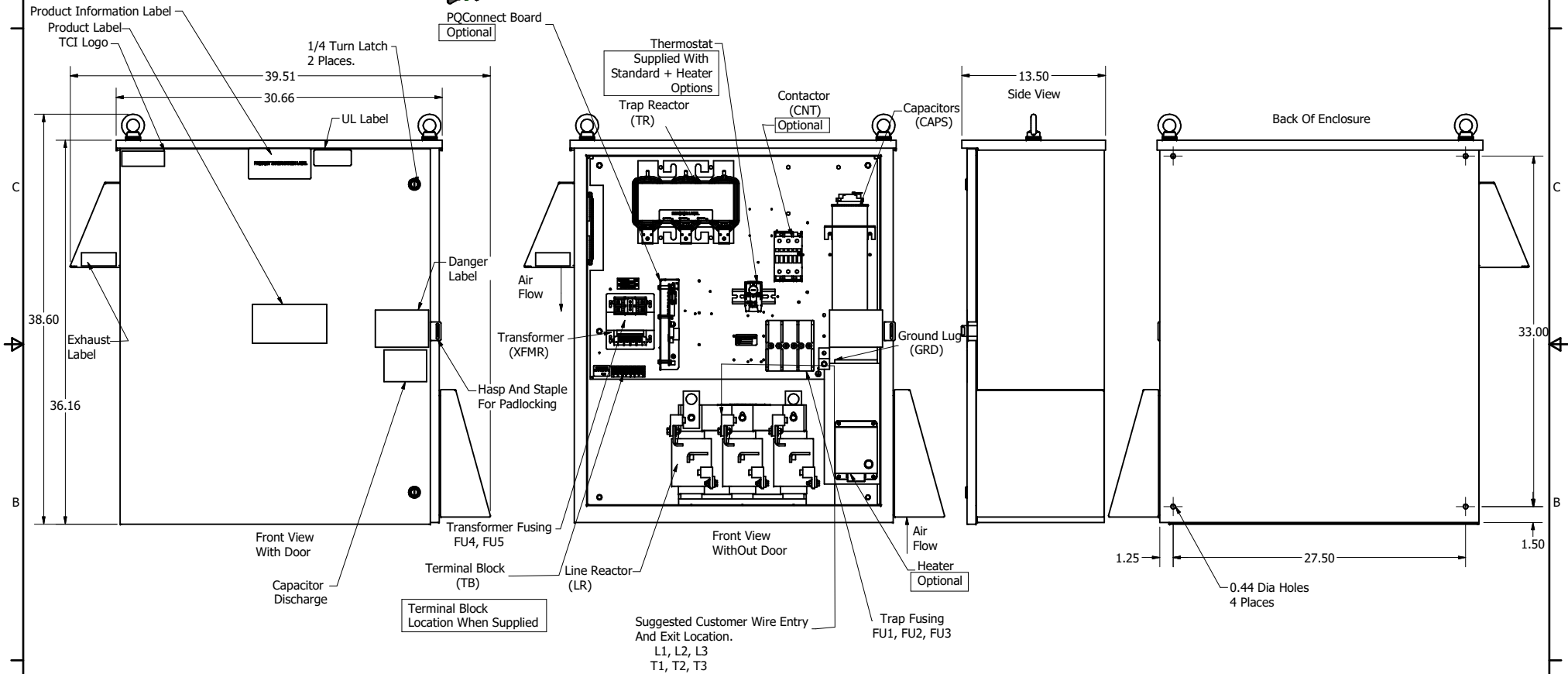
HGP Part Number	HorsePower (HP)	kVar	Harmonic	Voltage (V)	HZ.	Phase
HGP0125AW3----	125	40	5th	480	60	3

Customer Connections.  
L1, L2, L3, T1, T2, T3  
Wire Range: 250MCM to 6AWG.

Ground Lug  
Wire Range: 250MCM to 6AWG.



HGP Part Number	Schematic Drawing #	Approx Weight (LBS)
HGP0125AW3S0000	28697-4S	289
HGP0125AW3C0000	28697-4	291
HGP0125AW3S000H	28697-4SH	292
HGP0125AW3C000H	28697-4H	295
HGP0125AW3S1000	29597-PQ1	292
HGP0125AW3C1000	29597-PQ	294
HGP0125AW3S100H	29597-PQSH	295
HGP0125AW3C100H	29597-PQH	298



Components	HGP0125AW3----						
	S0000	C0000	C000H	S1000	C1000	S100H	C100H
Line Reactor (LR)	x	x	x	x	x	x	x
Trap Reactor (TR)	x	x	x	x	x	x	x
Capacitor (Cap)	x	x	x	x	x	x	x
Trap Fusing, FU1, FU2, FU3	x	x	x	x	x	x	x
Contactor (CNT)		x	x		x	x	x
Transformer (XFMR)	x	x	x	x	x	x	x
XFMR Fusing, FU4, FU5	x	x	x	x	x	x	x
XFMR FU6						x	x
Heater			x			x	x
PQConnect Board				x	x	x	x

NOTE: USE ONLY HUBS OR FITTINGS THAT COMPLY WITH UL514B FOR TYPE 3R ENCLOSURES

Customer Is Responsible For Installation to Meet All National And Local Electrical Codes.

Material(s) Shall be RoHS Compliant

TCI, LLC CLAIMS PROPRIETARY RIGHTS IN THE MATERIAL HEREIN DISCLOSED. IT IS SUPPLIED WITHOUT PREJUDICE TO ANY PATENT RIGHTS OF TCI AND MAY NOT BE REPRODUCED OR USED TO MANUFACTURE ANYTHING SHOWN THEREIN WITHOUT WRITTEN PERMISSION FROM TCI.	ID	S261, ENCL Updated	7/31/2020	DSW	FRACTIONAL	<b>TCI</b> W132 N10611 Grant Drive Germantown, WI 53022  HarmonicGuard Passive HGP, 125HP, 480/3/60, Type 3R 105562DG
	C	Add PQconnect	6/11/18	DSW	ANGULAR	
	NO	REVISION	DATE	BY	± 1°	
	TOLERANCES (EXCEPT AS NOTED) DECIMAL .XX ± .25 .XXX ± .10 FRACTIONAL ± 1/16 ANGLE ± 1°					
OWN BY: DSW DATE: 1/10/14 SCALE: 1/7 DRAWN BY: CJC SHEET 1 OF 1						