

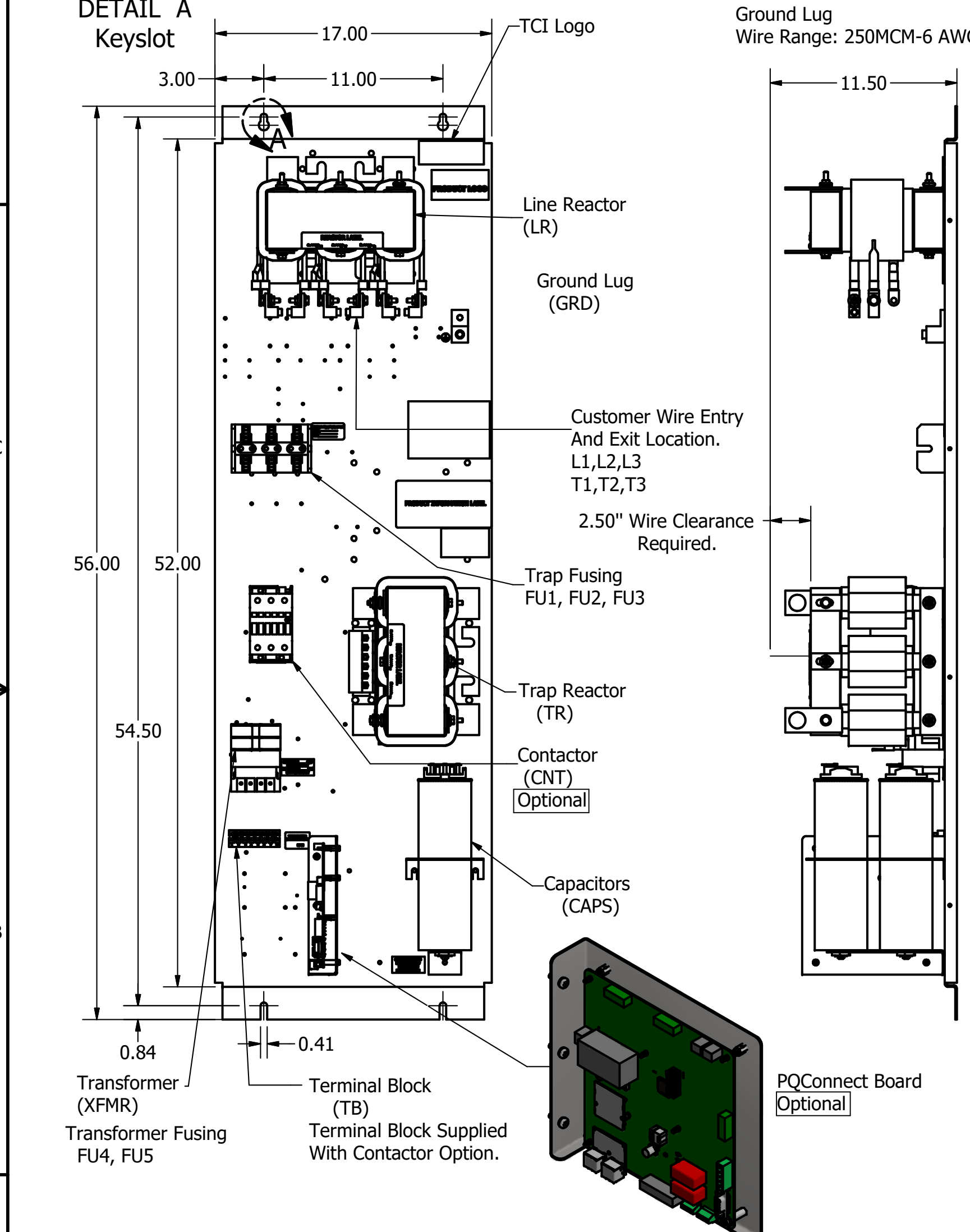
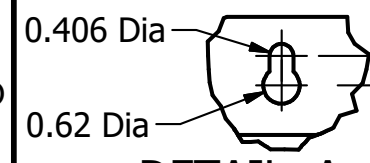
HGP Open Part Number	Schematic Drawing #	Approx Weight (LBS)
HGP0100CW0S0000	29474	208
HGP0100CW0C0000	29474-1	215
HGP0100CW0S1000	29474-PQ1	210
HGP0100CW0C1000	29474-PQ	217

HGP Part Number	HorsePower (HP)	kVar	Harmonic	Voltage (V)	Hz.	Phase
HGP0100CW----	100	30	5th	600	60	3

HGP Eclosed Type 1 Part Number	Schematic Drawing #	Approx Weight (LBS)
HGP0100CW1S0000	29474	303
HGP0100CW1C0000	29474	310
HGP0100CW1S1000	29474-PQ1	305
HGP0100CW1C1000	29474-PQ	312

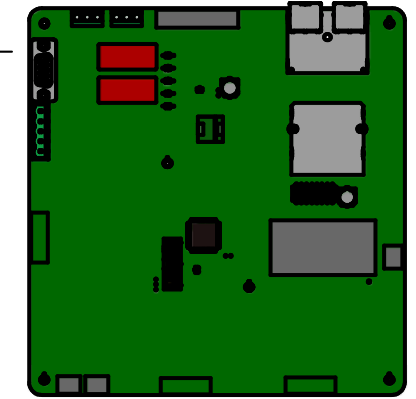
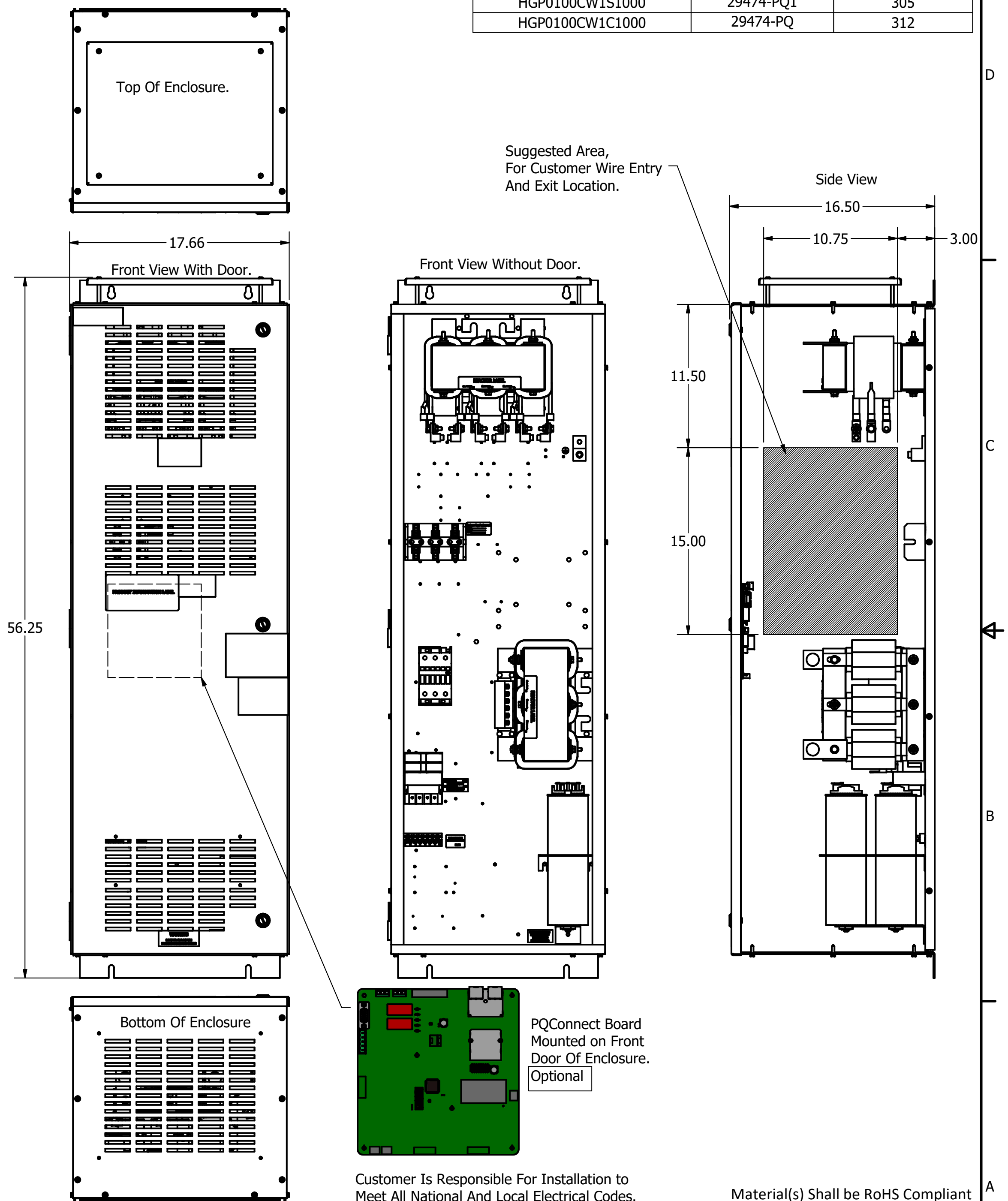
Note: For Torque Information See IOM Manual.  
Customer Connections. L1, L2, L3, T1, T2, T3  
Wire Range: 2/0 AWG to 14 AWG.

Ground Lug Wire Range: 250MCM-6 AWG.



Note: Customer is responsible for proper cooling of filter components on open panels. Capacitors Maximum Ambient 50°C

HGP0100CW----				
Components	0S0000/1S0000	0C0000/1C0000	0S1000/1S1000	0C1000/1C1000
Line Reactor (LR)	X	X	X	X
Trap Reactor (TR)	X	X	X	X
Capacitor (Cap)	X	X	X	X
Trap Fusing, FU1, FU2, FU3	X	X	X	X
Contactor (CNT)		X		X
Transformer (XFMR)	X	X	X	X
XFMR Fusing, FU4, FU5	X	X	X	X
PQConnect Board			X	X



Customer Is Responsible For Installation to Meet All National And Local Electrical Codes.

Material(s) Shall be RoHS Compliant

TCI, LLC CLAIMS PROPRIETARY RIGHTS IN THE MATERIAL HEREIN DISCLOSED. IT IS SUPPLIED WITHOUT PREDJUDICE TO ANY PATENT RIGHTS OF TCI AND MAY NOT BE REPRODUCED OR USED TO MANUFACTURE ANYTHING SHOWN THEREIN WITHOUT WRITTEN PERMISSION FROM TCI.

TOLERANCES (EXCEPT AS NOTED)			
DECIMAL			
	.XX ± .25		
	.XXX ± .10		
FRACTIONAL			
	± 1/16		
ANGULAR			
	± 1°		
A	As Designed	8/23/18	DSW
NO	REVISION	DATE	BY

**TCI** W132 N10611 Grant Drive  
Germantown, WI 53022

HarmonicGuard Passive  
HGP, 100HP, 600/3/60, Open and Type 1

DRN BY: DSW DATE: 2/3/15 105706DG  
SCALE: 1/6 APRVD: SIZE C SHT. 1 OF 1