

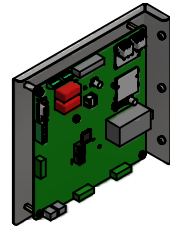
HGP Part Number	HorsePower (HP)	kVar	Harmonic	Voltage (V)	HZ.	Phase
HGP0100AW3----	100	30	5th	480	60	3

Note: For Torque Information
See IOM Manual

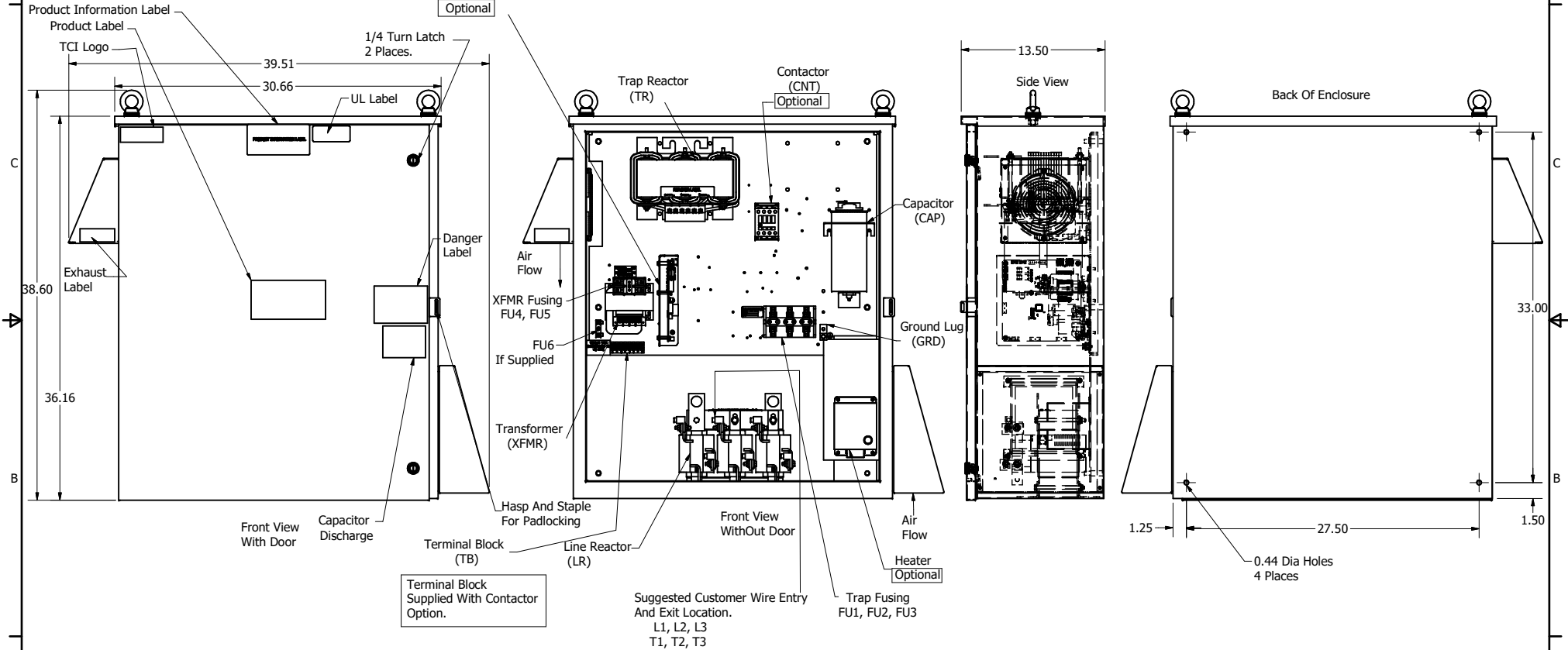
Customer Connections.
L1, L2, L3, T1, T2, T3
Wire Range: 2/0 AWG to 14AWG.

Ground Lug
Wire Range: 2/0 to 14 AWG.

HGP Part Number	Schematic Drawing #	Approx Weight (LBS)
HGP0100AW3S0000	28697-4S	269
HGP0100AW3C0000	28697-4	271
HGP0100AW3C000H	28697-4H	275
HGP0100AW3S1000	29597-PQ1	272
HGP0100AW3C1000	29597-PQ	274
HGP0100AW3C100H	29597-PQH	278



PQConnect Board
Optional



HGP0100AW3----						
Components	S0000	C0000	C000H	S1000	C1000	C100H
Line Reactor (LR)	x	x	x	x	x	x
Trap Reactor (TR)	x	x	x	x	x	x
Capacitor (Cap)	x	x	x	x	x	x
Trap Fusing, FU1, FU2, FU3	x	x	x	x	x	x
Contactor (CNT)		x	x		x	x
Transformer (XFMR)	x	x	x	x	x	x
XFMR Fusing, FU4, FU5	x	x	x	x	x	x
XFMR FU6						x
Heater			x			x
PQConnect Board				x	x	x

NOTE: USE ONLY HUBS OR FITTINGS THAT COMPLY
WITH UL514B FOR TYPE 3R ENCLOSURES

Customer Is Responsible For Installation to
Meet All National And Local Electrical Codes.

Material(s) Shall be RoHS Compliant

TCI, LLC CLAIMS PROPRIETARY RIGHTS IN THE MATERIAL HEREIN DISCLOSED. IT IS SUPPLIED WITHOUT PREJUDICE TO ANY PATENT RIGHTS OF TCI AND MAY NOT BE REPRODUCED OR USED TO MANUFACTURE ANYTHING SHOWN THEREIN WITHOUT WRITTEN PERMISSION FROM TCI.	TOLERANCES (EXCEPT AS NOTED)		W 132 N10611 Grant Drive Germanstown, WI 53022 HarmonicGuard Passive HGP, 100HP, 480/3/60, Type 3R 105561DG
	DECIMAL		
	.XX ± .25 .XXX ± .10		
	FRACTIONAL		
ID	S261_ENCL/CONTACTOR UPDATED	5/12/2020	DSW
C	Add PQconnect	6/11/18	DSW
NO	REVISION	DATE	BY
			± 1°
DRN BY	DSW	DATE	1/10/14
SCALE	1/8	DRVD	CS