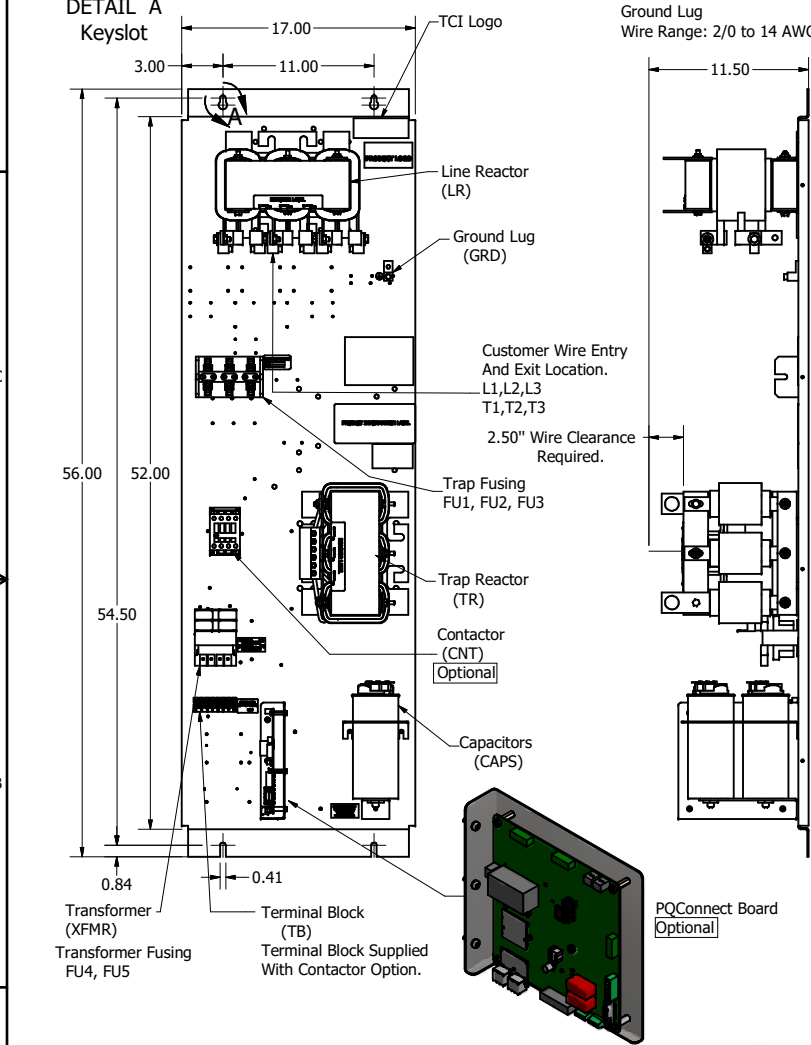


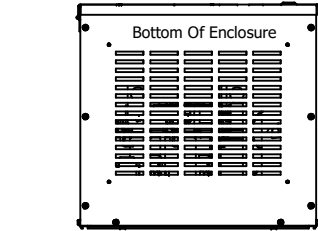
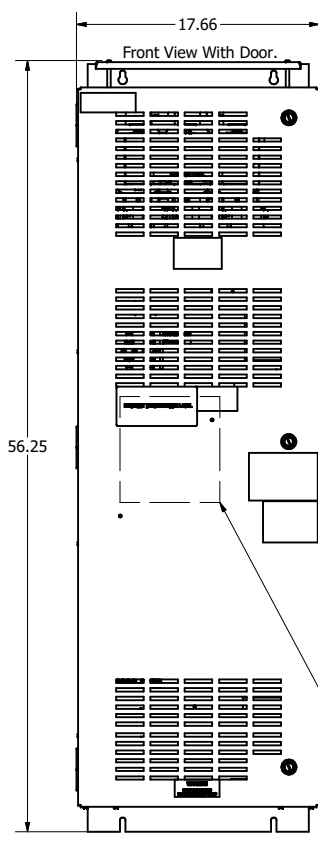
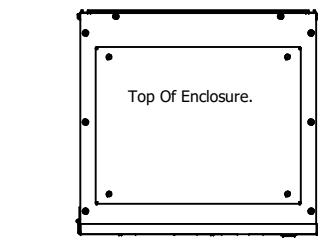
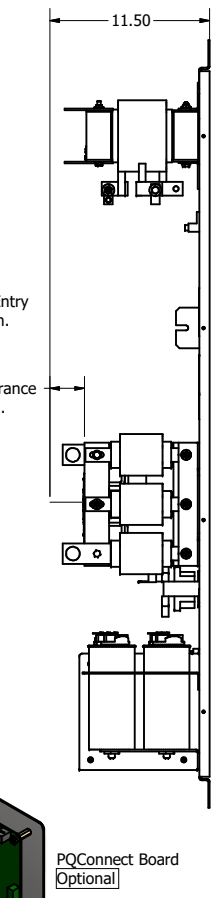
HGP Open Part Number	Schematic Drawing #	Approx Weight (LBS)
HGP0100AW0S0000	28697-1S	200
HGP0100AW0C0000	28697	205
HGP0100AW0S1000	29597-PQ1	202
HGP0100AW0C1000	29597-PQ	207



HGP Part Number	HorsePower (HP)	kVar	Harmonic	Voltage (V)	Hz.	Phase
HGP0100AW----	100	30	5th	480	60	3

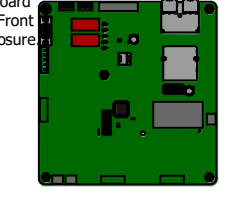
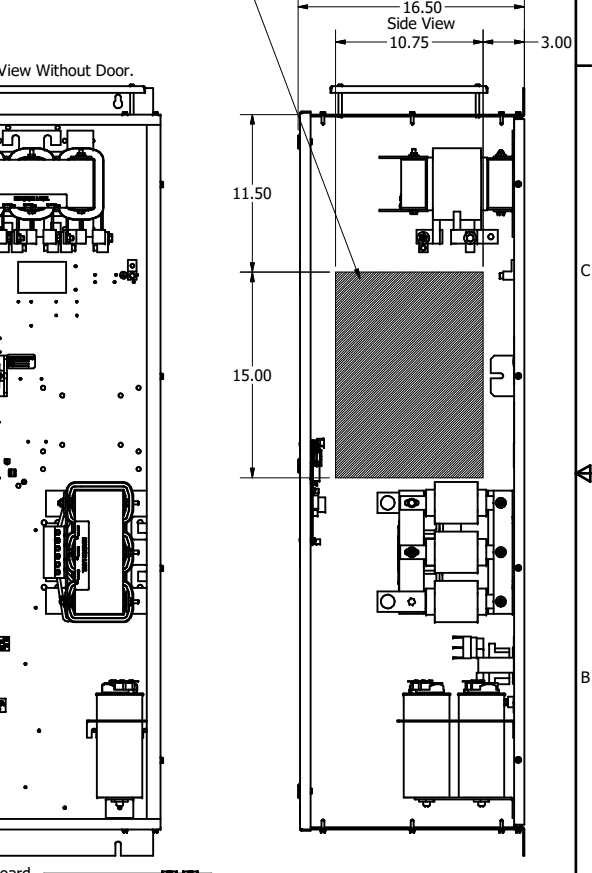
Note: For Torque Information See IOM Manual.
Customer Connections. L1, L2, L3, T1, T2, T3
Wire Range: 2/0 AWG to 14AWG.

Ground Lug
Wire Range: 2/0 to 14 AWG.



HGP Eclosed Type 1 Part Number	Schematic Drawing #	Approx Weight (LBS)
HGP0100AW1S0000	28697-1S	295
HGP0100AW1C0000	28697	300
HGP0100AW1S1000	28697-PQ1	296
HGP0100AW1C1000	29597-PQ	301

Suggested Area, For Customer Wire Entry And Exit Location.



PQConnect Board Mounted on Front Door Of Enclosure Optional

Note: Customer is responsible for proper cooling of filter components on open panels. Capacitors Maximum Ambient 50°C

Components	HGP0100AW----			
	0S0000/1S0000	0C0000/1C0000	0S1000/1S1000	0C1000/1C1000
Line Reactor (LR)	X	X	X	X
Trap Reactor (TR)	X	X	X	X
Capacitor (Cap)	X	X	X	X
Trap Fusing, FU1, FU2, FU3	X	X	X	X
Contactor (CNT)		X		X
Transformer (XFMR)		X	X	X
XFMR Fusing, FU4, FU5		X	X	X
PQConnect Board			X	X

Customer Is Responsible For Installation to Meet All National And Local Electrical Codes.

Material(s) Shall be RoHS Compliant

TCL, LLC CLAIMS PROPRIETARY RIGHTS IN THE MATERIAL HEREIN DISCLOSED. IT IS SUPPLIED WITHOUT PREJUDICE TO ANY PATENT RIGHTS OF TCL AND MAY NOT BE REPRODUCED OR USED TO MANUFACTURE ANYTHING SHOWN THEREIN WITHOUT WRITTEN PERMISSION FROM TCL.

REV	DESCRIPTION	DATE	BY
1	5261, CNT Updated	5/13/2020	DSW
NO	REVISION	DATE	BY

TOLERANCES (EXCEPT AS NOTED)	
DECIMAL	.XX ± .02 .XXX ± .10
FRACTIONAL	± 1/16
ANGULAR	± 1°

TCL W132 N10611 Grant Drive
Germentown, WI 53022

HarmonicGuard Passive
HGP, 100HP, 480/3/60, Open and Type 1

OWN BY: DSW DATE: 10/31/13 105487DG
SCALE: 1/6 DRAWN: DATE: 10/31/13
SHEET 1 OF 1