

HGP Open Part Number	Schematic Drawing #	Approx Weight (LBS)
HGP00075CW0S0000	29474	155
HGP0075CW0C0000	29474-1	160
HGP0075CW0S1000	29474-PQ1	158
HGP0075CW0C1000	29474-PQ	163

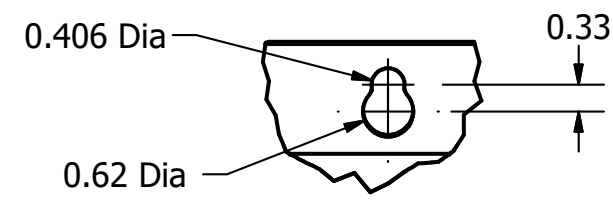
HGP Part Number	HorsePower (HP)	kVar	Harmonic	Voltage (V)	Hz.	Phase
HGP0075CW----	75	25	5th	600	60	3

HGP Eclosed Type 1 Part Number	Schematic Drawing #	Approx Weight (LBS)
HGP0075CW1S0000	29474	220
HGP0075CW1C0000	29474-1	225
HGP0075CW1S1000	29474-PQ1	223
HGP0075CW1C1000	29474-PQ	228

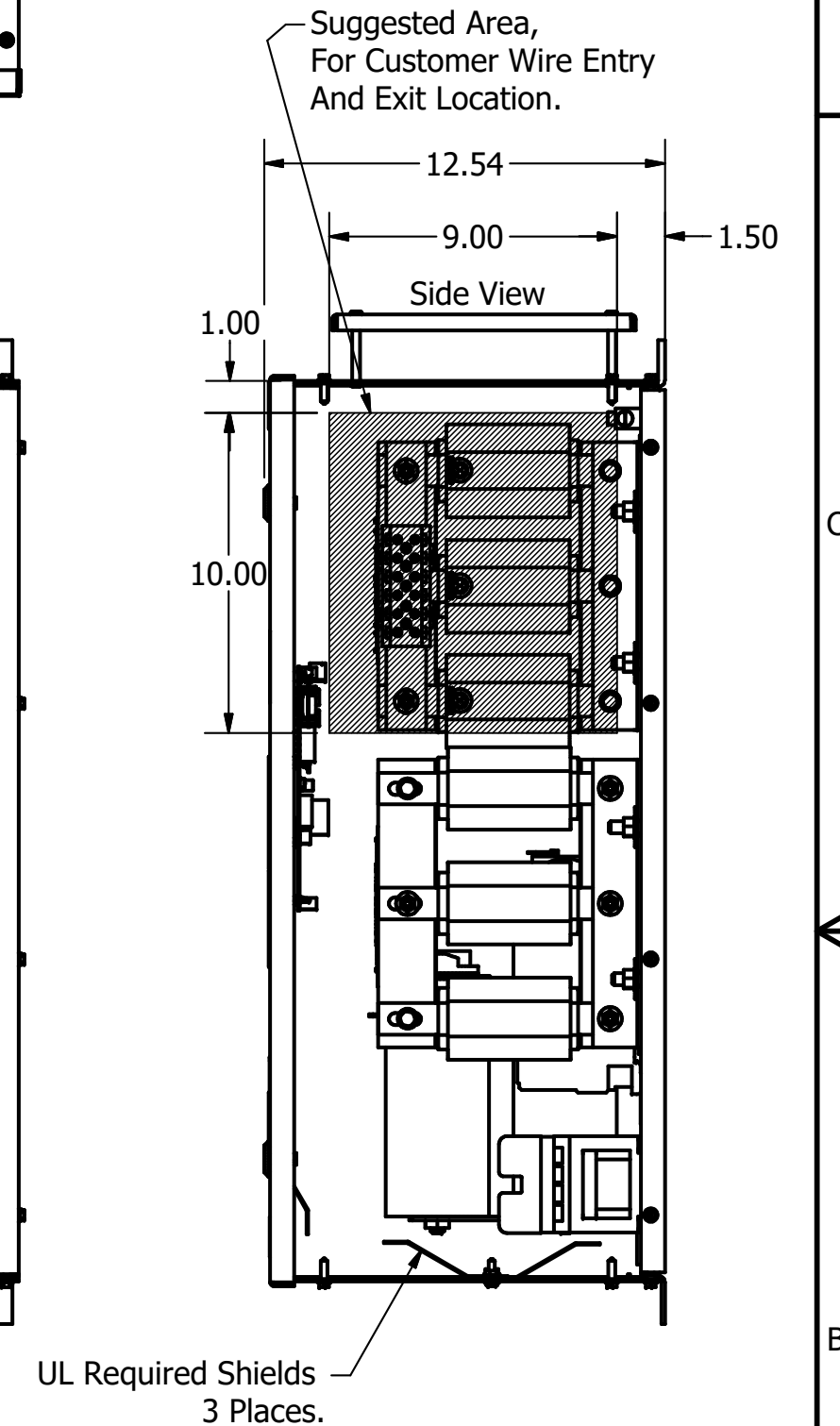
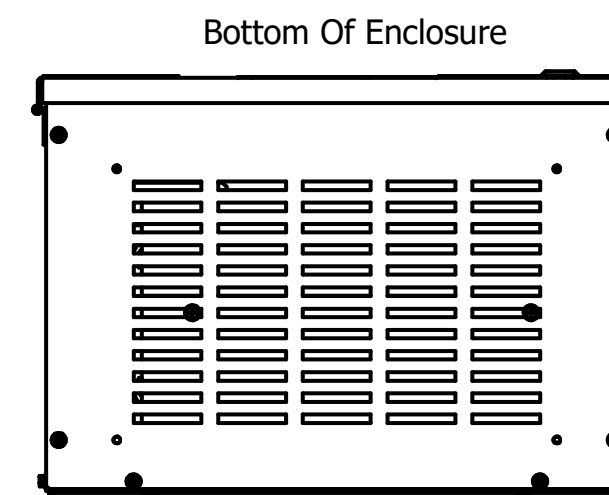
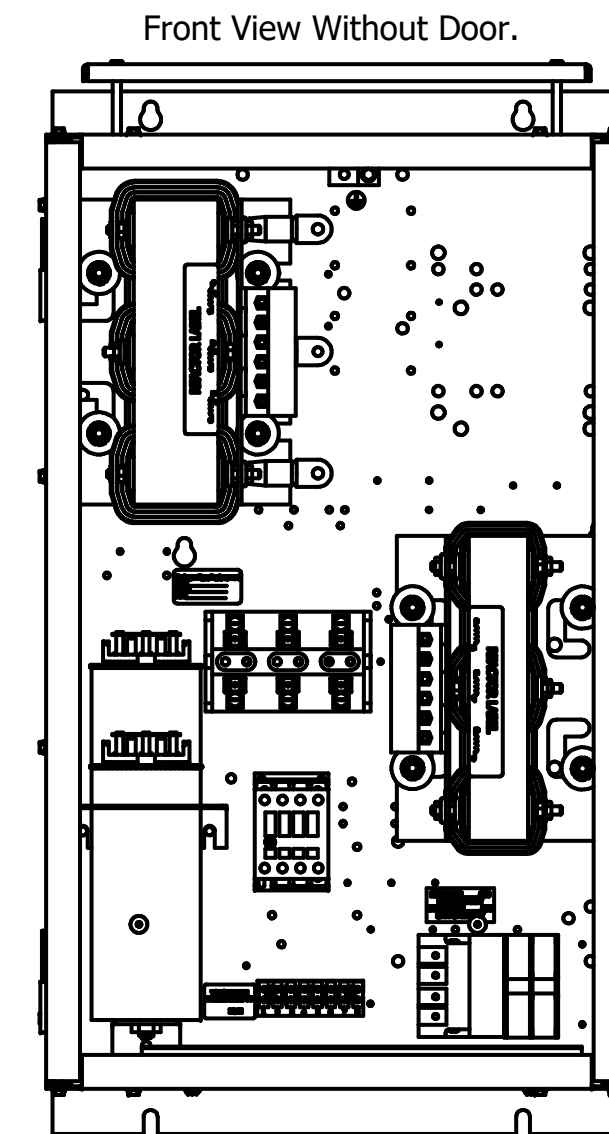
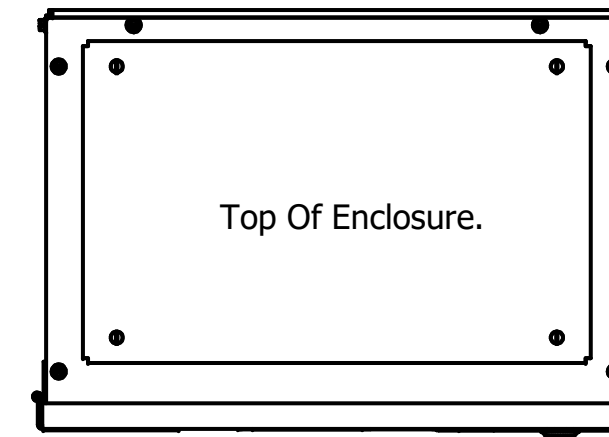
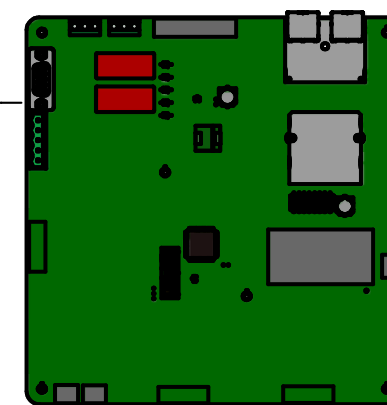
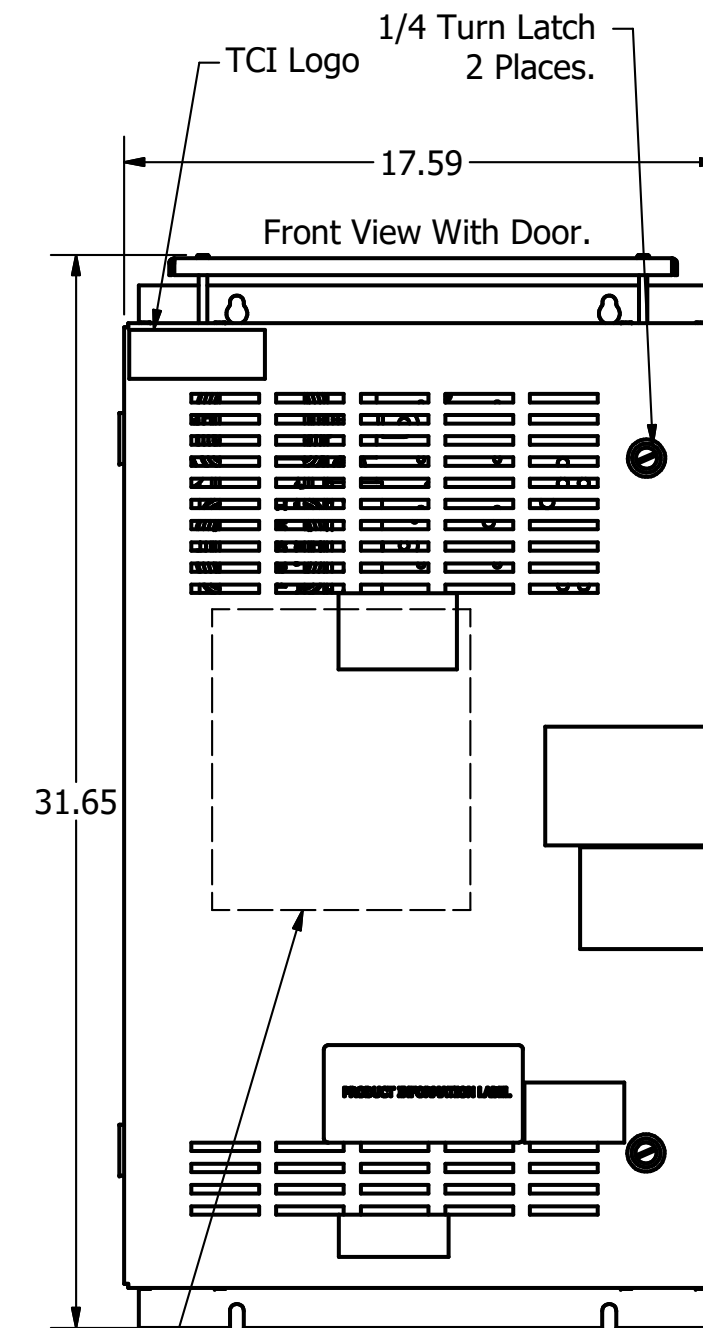
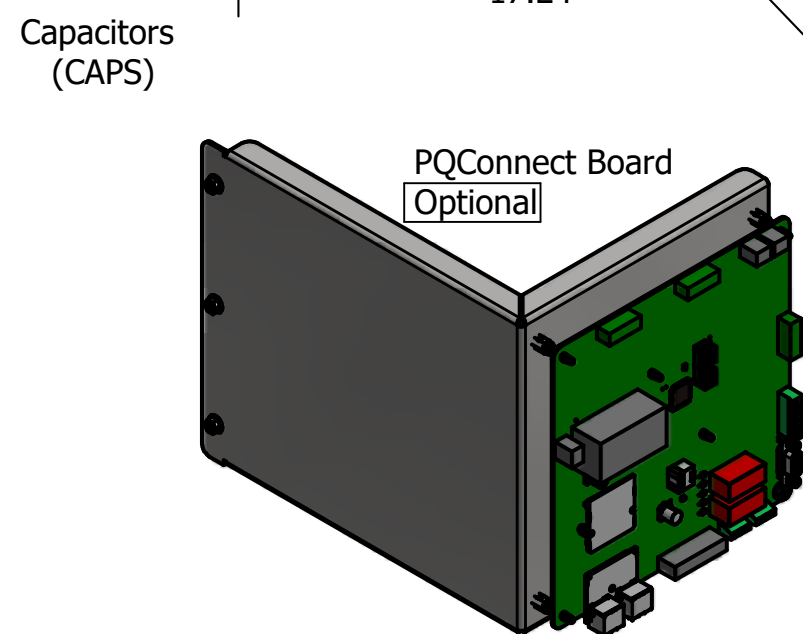
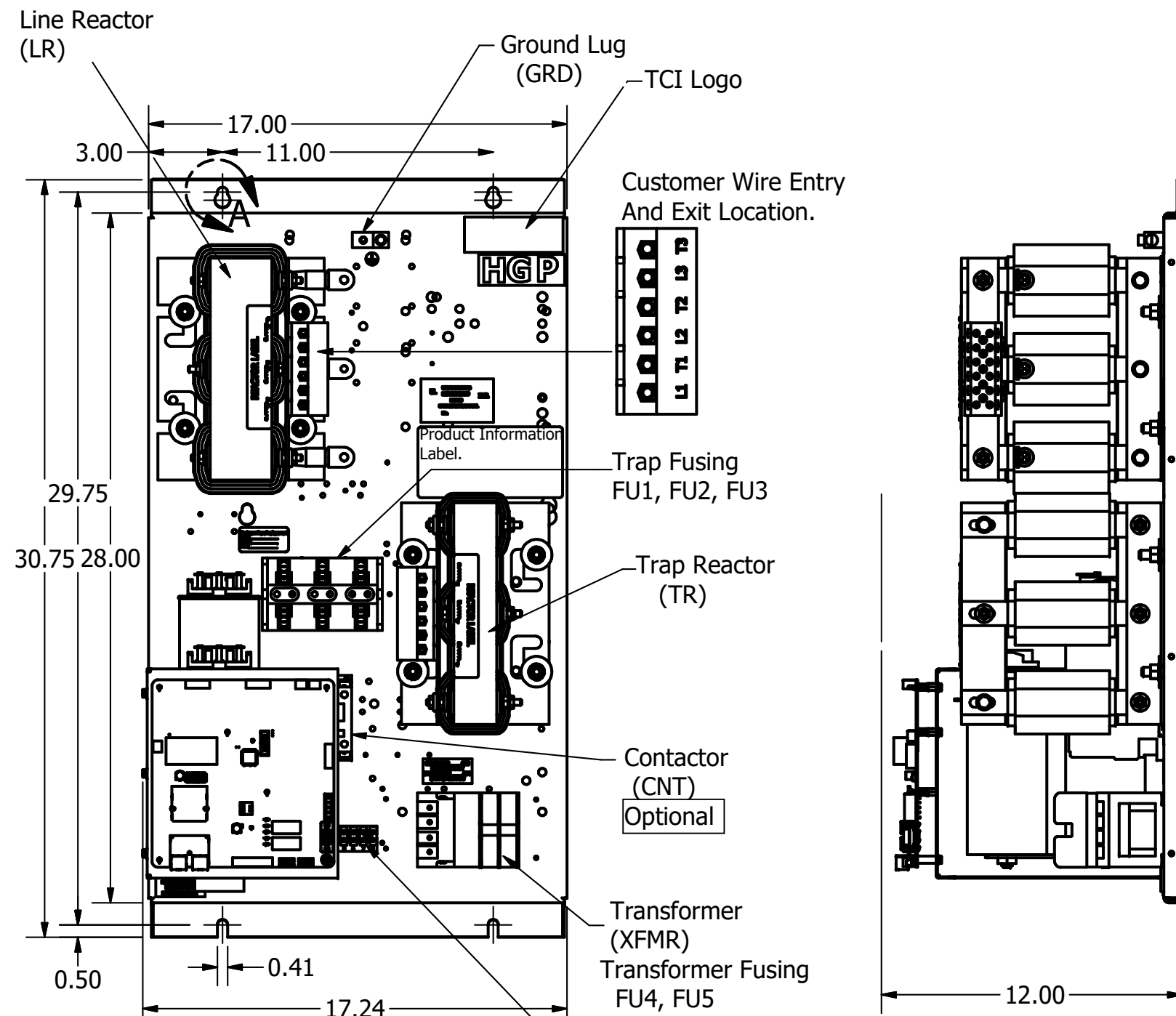
Note: For Torque Information See IOM Manual.

Customer Connections.
L1, L2, L3, T1, T2, T3
Wire Range: 1 AWG to 22 AWG.

Ground Lug
Wire Range: 250MCM to 6 AWG.



DETAIL A
Keyslot



Note: Customer is responsible for proper cooling of filter components on open panels. Capacitors Maximum Ambient 50°C

Components	HGP0075AW----			
	0S0000/1S0000	0C0000/1C0000	0S1000/1S1000	0C1000/1C1000
Line Reactor (LR)	X	X	X	X
Trap Reactor (TR)	X	X	X	X
Capacitor (Cap)	X	X	X	X
Trap Fusing, FU1, FU2, FU3	X	X	X	X
Contactor (CNT)		X		X
Transformer (XFMR)	X	X	X	X
XFMR Fusing, FU4, FU5	X	X	X	X
PQConnect Board			X	X

Customer Is Responsible For Installation to Meet All National And Local Electrical Codes.

Material(s) Shall be RoHS Compliant

TCI, LLC CLAIMS PROPRIETARY RIGHTS IN THE MATERIAL HEREIN DISCLOSED. IT IS SUPPLIED WITHOUT PREJUDICE TO ANY PATENT RIGHTS OF TCI AND MAY NOT BE REPRODUCED OR USED TO MANUFACTURE ANYTHING SHOWN THEREIN WITHOUT WRITTEN PERMISSION FROM TCI.	TOLERANCES (EXCEPT AS NOTED)		W132 N10611 Grant Drive Germantown, WI 53022 HarmonicGuard Passive HGP, 75HP, 600/3/60, Open and Type 1
	DECIMAL		
	.XX ± .25 .XXX ± .10		
	FRACTIONAL ± 1/16		
A Add PQ Connect	8/23/18	DSW	DRN BY: DSW DATE: 8/23/18 105705DG
NO REVISION	DATE	BY	SCALE: 1/6 APVRD: SIZE C SHT 1 OF 1