

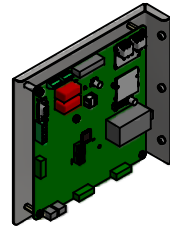
HGP Part Number	HorsePower (HP)	kVar	Harmonic	Voltage (V)	HZ.	Phase
HGP0060AW3----	60	20	5th	480	60	3

Note: For Torque Information See IOM Manual

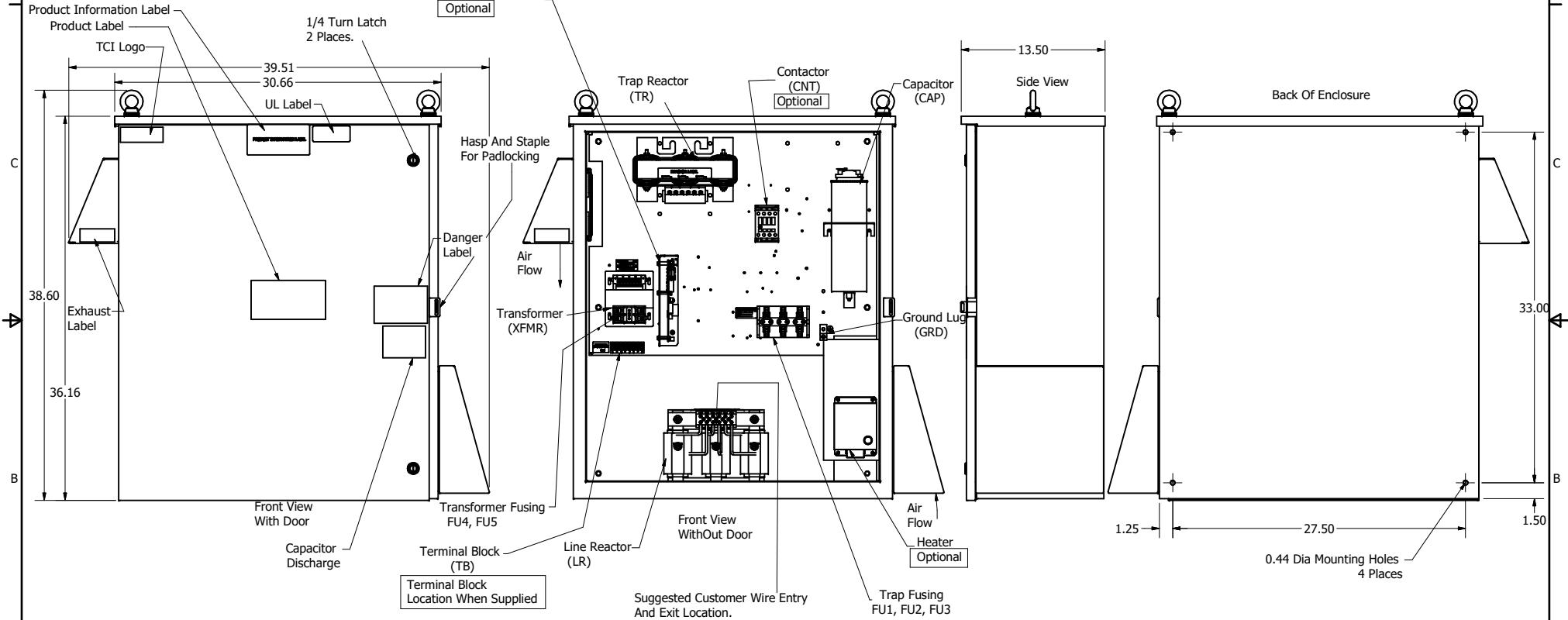
Customer Connections.
L1, T1, L2, T2, L3, T3
Wire Range: 1 AWG to 22 AWG.

Ground Lug
Wire Range: 1/0 to 14 AWG.

HGP Part Number	Schematic Drawing #	Approx Weight (LBS)
HGP0060AW3S0000	29597-1S	239
HGP0060AW3C0000	29597-1	241
HGP0060AW3C000H	29597-1H	245
HGP0060AW3S1000	29597-PQ1	242
HGP0060AW3C1000	29597-PQ	244
HG0060AW3C100H	29597-PQH	248



PQConnect Board
Optional



Components	HGP0060AW3----					
	S0000	C0000	C000H	S1000	C1000	C100H
Line Reactor (LR)	x	x	x	x	x	x
Trap Reactor (TR)	x	x	x	x	x	x
Capacitor (Cap)	x	x	x	x	x	x
Trap Fusing, FU1, FU2, FU3	x	x	x	x	x	x
Contactor (CNT)		x	x		x	x
Transformer (XFMR)	x	x	x	x	x	x
XFMR Fusing, FU4, FU5	x	x	x	x	x	x
Heater			x			x
PQConnect Board				x	x	x

NOTE: USE ONLY HUBS OR FITTINGS THAT COMPLY WITH UL514B FOR TYPE 3R ENCLOSURES

Customer Is Responsible For Installation to Meet All National And Local Electrical Codes.

Material(s) Shall be RoHS Compliant

TCI, LLC CLAIMS PROPRIETARY RIGHTS IN THE MATERIAL HEREIN DISCLOSED. IT IS SUPPLIED WITHOUT PREJUDICE TO ANY PATENT RIGHTS OF TCI AND MAY NOT BE REPRODUCED OR USED TO MANUFACTURE ANYTHING SHOWN THEREIN WITHOUT WRITTEN PERMISSION FROM TCI.					TOLERANCES (EXCEPT AS NOTED) DECIMAL .XX ± .25 .XXX ± .10	TCI W132 N10611 Grant Drive Germantown, WI 53022 HarmonicGuard Passive HGP, 60HP, 480/3/60, Type 3R 105559DG
	F	\$265, Enclosure Updated	7/31/2020	DSW	FRACTIONAL ± 1/16	
	E	Add PQConnect	6/11/18	DSW	ANGULAR ± 1°	
	NO	REVISION	DATE	BY		