

HGP Open Part Number	Schematic Drawing #	Approx Weight (LBS)
HGP0060AW0S0000	29597-S	135
HGP0060AW0C0000	29597	140
HGP0060AW0S1000	29597-PQ1	138
HGP0060AW0C1000	29597-PQ	143

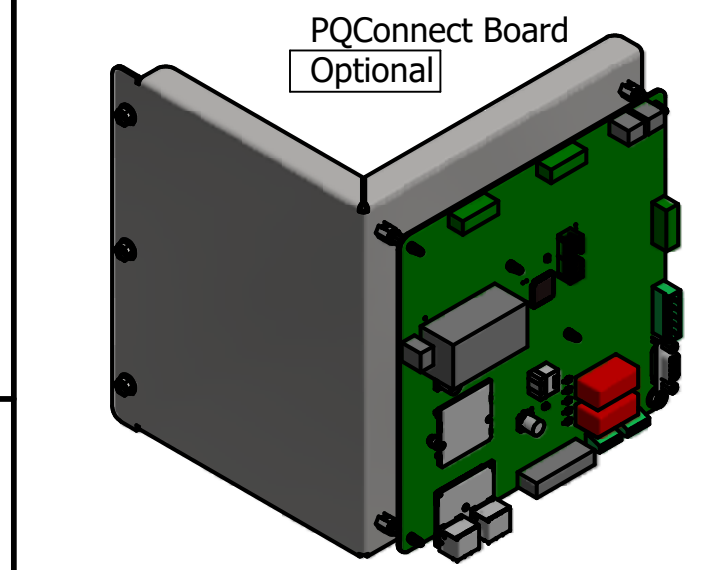
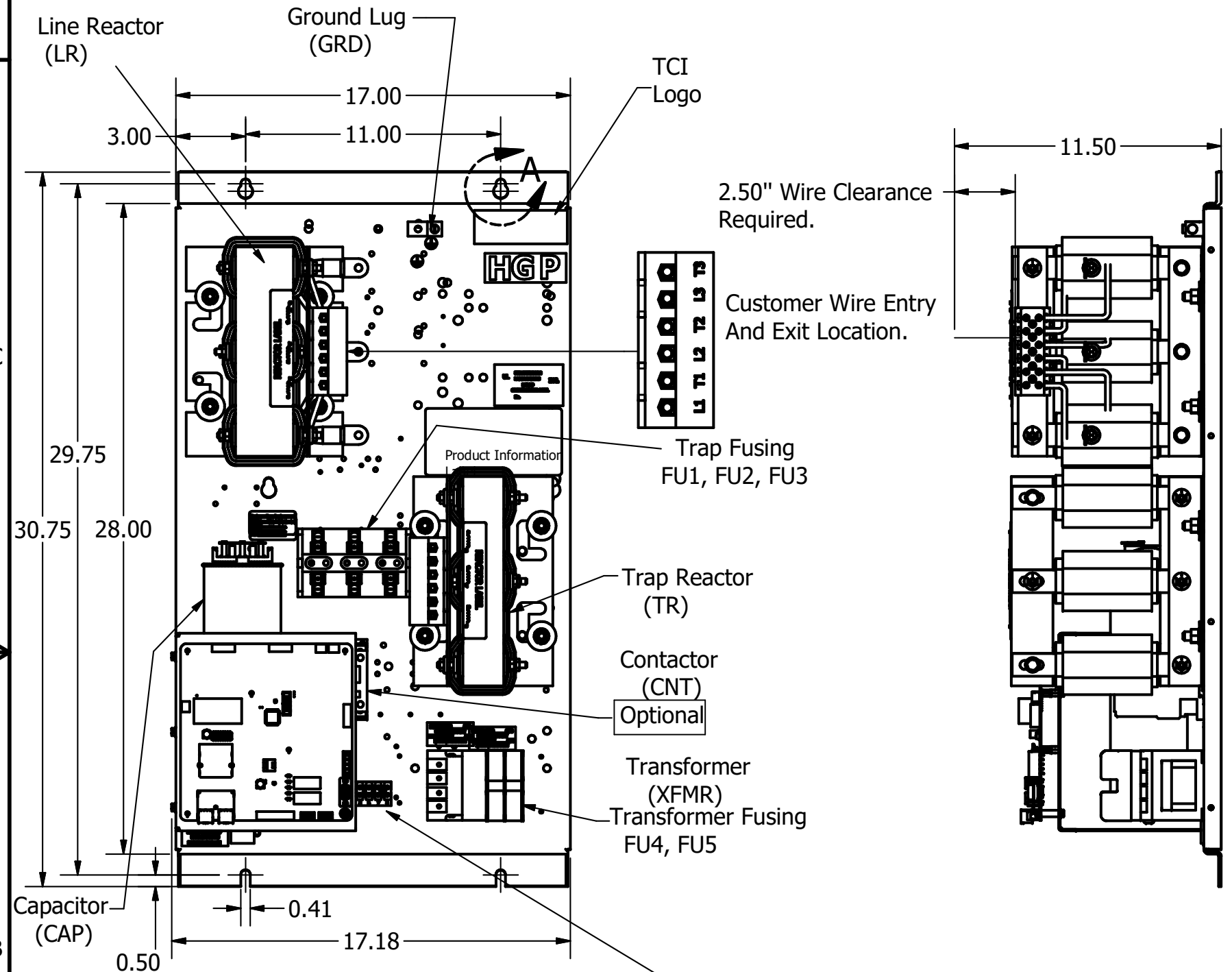
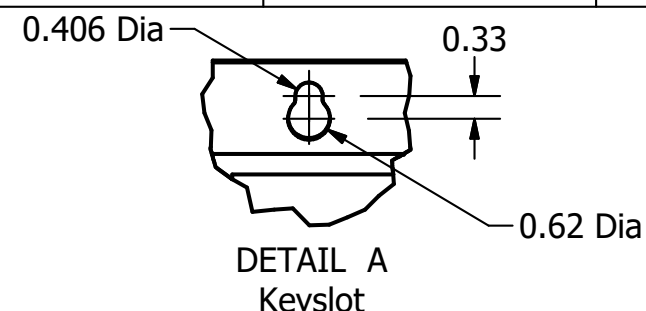
HGP Part Number	HorsePower (HP)	kVar	Harmonic	Voltage (V)	Hz.	Phase
HGP0060AW----	60	20	5th	480	60	3

HGP Eclosed Type 1 Part Number	Schematic Drawing #	Approx Weight (LBS)
HGP0060AW1S0000	29597-S	200
HGP0060AW1C0000	29597	205
HGP0060AW1S1000	29597-PQ1	201
HGP0060AW1C1000	29597-PQ	206

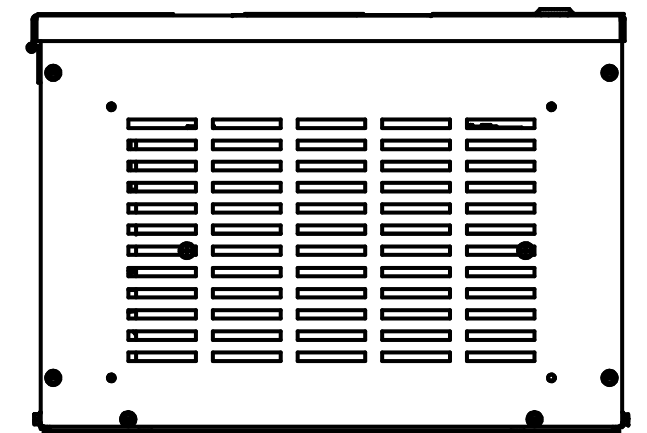
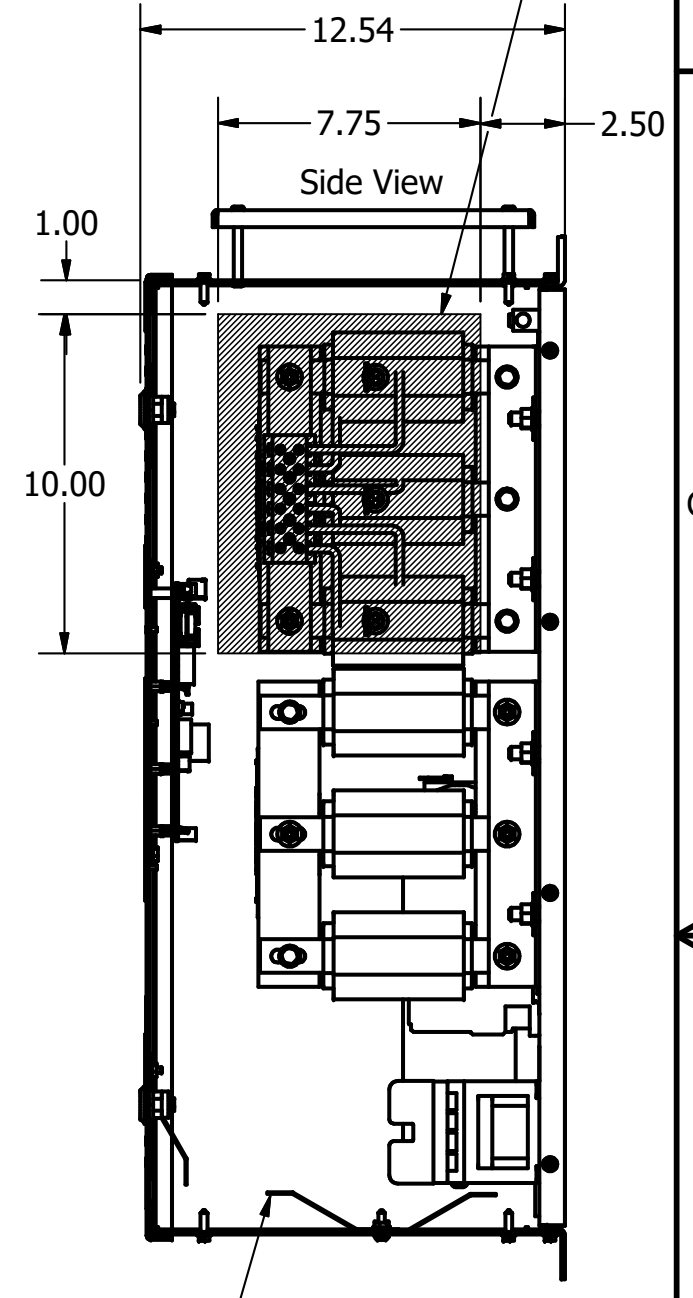
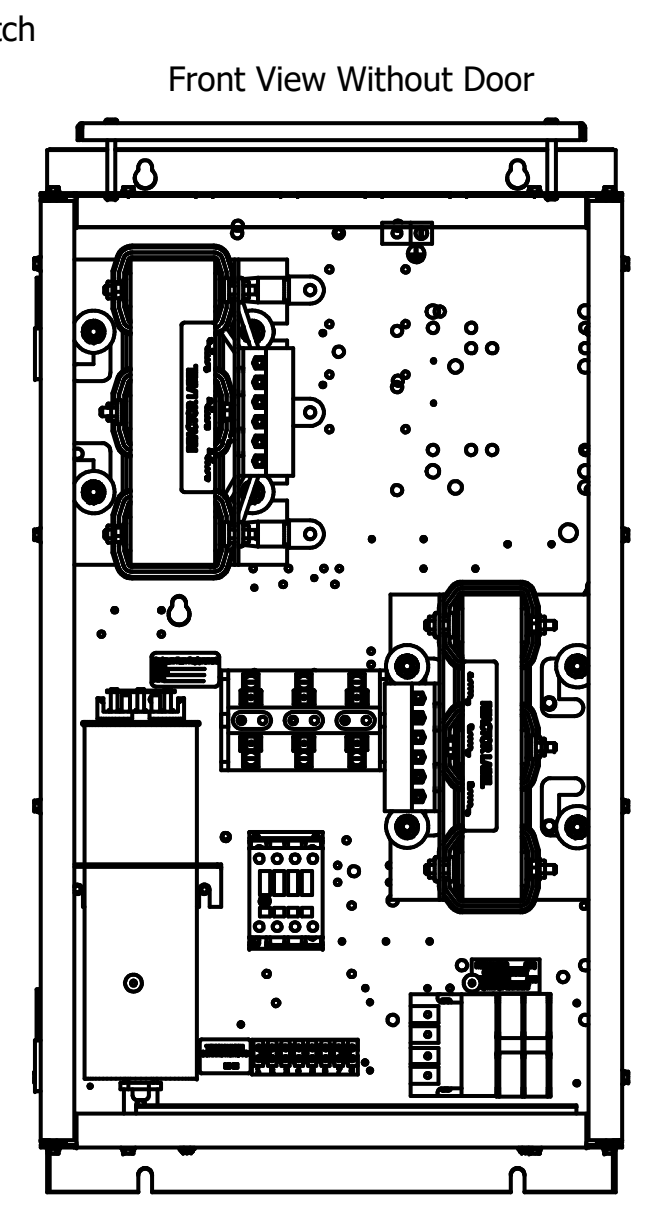
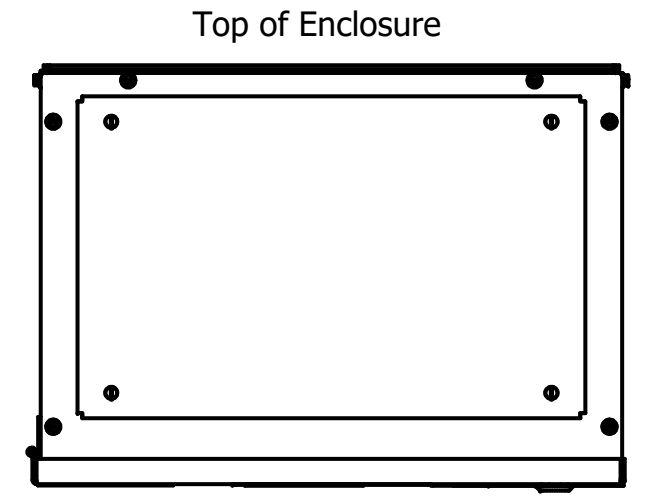
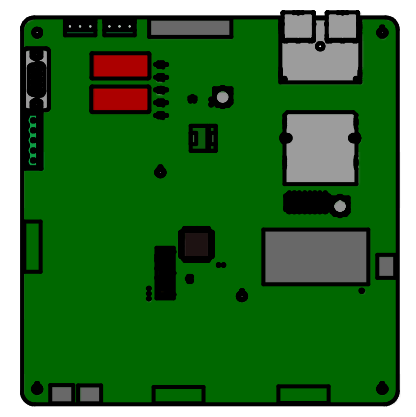
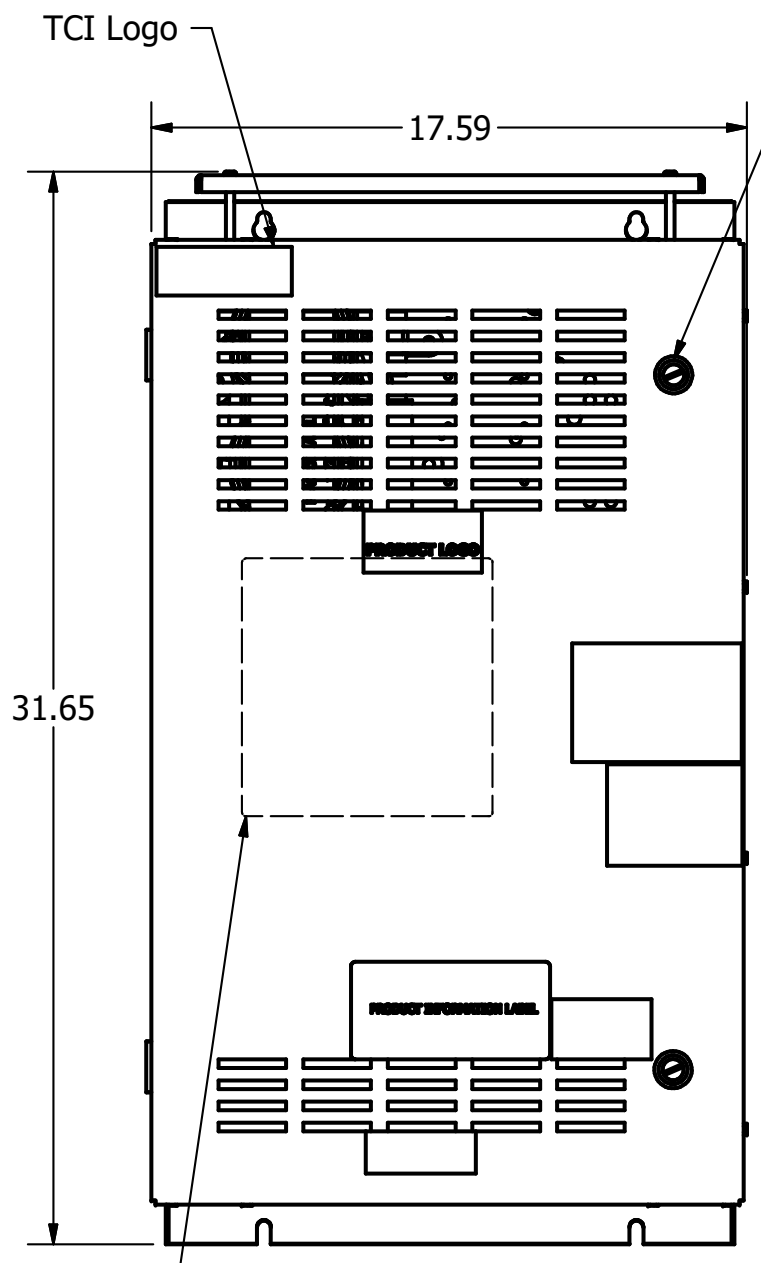
Note: For Torque Information
See IOM Manual

Customer Connections.
L1, T1, L2, T2, L3, T3
Wire Range: 1 AWG to 22 AWG.

Ground Lug
Wire Range: 1/0 to 14 AWG.



Terminal Block (TB)
Terminal Block Supplied With Contactor Option.



Note: Customer is responsible for proper cooling of filter components on open panels.
Capacitors Maximum Ambient 50°C.

Customer Is Responsible For Installation to Meet All National And Local Electrical Codes.

Material(s) Shall be RoHS Compliant

Components	HGP0060AW----			
	0S0000/1S0000	0C0000/1C0000	0S1000/1S1000	0C1000/1C1000
Line Reactor (LR)	X	X	X	X
Trap Reactor (TR)	X	X	X	X
Capacitor (Cap)	X	X	X	X
Trap Fusing, FU1, FU2, FU3	X	X	X	X
Contactor (CNT)		X		X
Transformer (XFMR)	X	X	X	X
XFMR Fusing, FU4, FU5	X	X	X	X
PQConnect Board			X	X

TCI, LLC CLAIMS PROPRIETARY RIGHTS IN THE MATERIAL HEREIN DISCLOSED. IT IS SUPPLIED WITHOUT PREJUDICE TO ANY PATENT RIGHTS OF TCI AND MAY NOT BE REPRODUCED OR USED TO MANUFACTURE ANYTHING SHOWN THEREIN WITHOUT WRITTEN PERMISSION FROM TCI.

NO	REVISION	DATE	BY
C	PQConnect Board Added.	6/14/18	DSW

TOLERANCES (EXCEPT AS NOTED)
DECIMAL
.XX ± .25
.XXX ± .10
FRACTIONAL
± 1/16
ANGULAR
± 1°

TCI W132 N10611 Grant Drive
Germantown, WI 53022

HarmonicGuard Passive
HGP, 60HP, 480/3/60, Open and Type 1.

DRN BY: DSW DATE: 10/11/13
SCALE: 1/8 APRVD: 105485DG
SIZE: C SHT 1 OF 1