

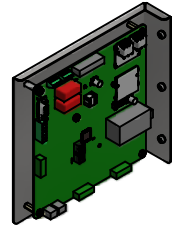
HGP Part Number	HorsePower (HP)	kVar	Harmonic	Voltage (V)	HZ.	Phase
HGP0050AW3----	50	15	5th	480	60	3

Note: For Torque Information See IOM Manual

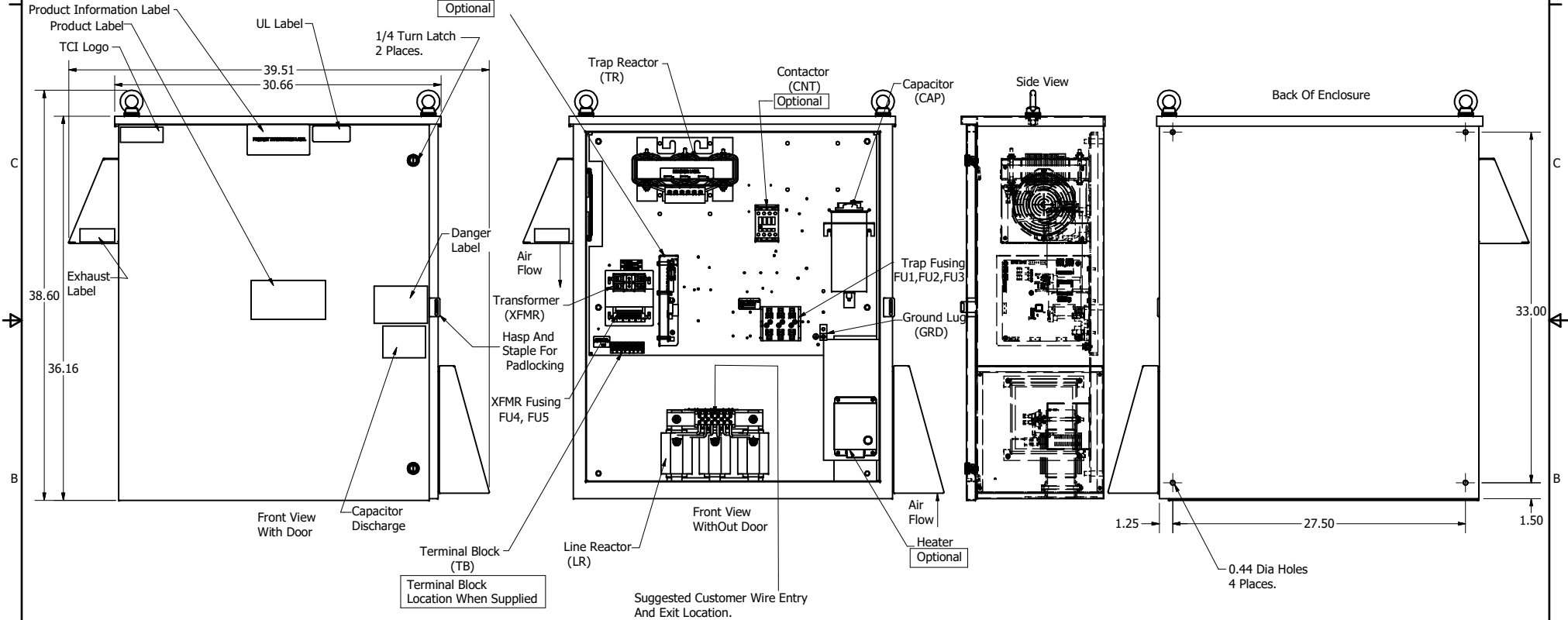
Customer Connections.  
L1, T1, L2, T2, L3, T3  
Wire Range: 1 AWG to 22 AWG.

Ground Lug  
Wire Range: 1/0 to 14 AWG.

HGP Part Number	Schematic Drawing #	Approx Weight (LBS)
HGP0050AW3S0000	28697-4S	229
HGP0050AW3C0000	28697-4	231
HGP0050AW3C000H	28697-4H	235
HGP0050AW3S1000	29597-PQ1	232
HGP0050AW3C1000	29597-PQ	234
HGP0050AW3C100H	29597-PQH	238



PQConnect Board  
Optional



HGP0050AW3----						
Components	S0000	C0000	C000H	S1000	C1000	C100H
Line Reactor (LR)	x	x	x	X	X	X
Trap Reactor (TR)	x	x	x	X	X	X
Capacitor (Cap)	x	x	x	X	X	X
Trap Fusing, FU1, FU2, FU3	x	x	x	X	X	X
Contactor (CNT)		x	x		X	X
Transformer (XFMR)	x	x	x	X	X	X
XFMR Fusing, FU4, FU5	x	x	x	X	X	X
Heater			x			X
PQConnect Board				X	X	X

NOTE: USE ONLY HUBS OR FITTINGS THAT COMPLY WITH UL514B FOR TYPE 3R ENCLOSURES

Customer Is Responsible For Installation to Meet All National And Local Electrical Codes.

Material(s) Shall be RoHS Compliant

TCI, LLC CLAIMS PROPRIETARY RIGHTS IN THE MATERIAL HEREIN DISCLOSED. IT IS SUPPLIED WITHOUT PREJUDICE TO ANY PATENT RIGHTS OF TCI AND MAY NOT BE REPRODUCED OR USED TO MANUFACTURE ANYTHING SHOWN THEREIN WITHOUT WRITTEN PERMISSION FROM TCI.	5265, Enclosure Updated	5/18/2020	DSW	DECIMAL .XX ± .25 .XXX ± .10	W132 N10611 Grant Drive Germantown, WI 53022 HarmonicGuard Passive HGP, 50HP, 480/3/60, Type 3R	
	Add PQConnect	6/11/18	DSW	FRACTIONAL ± 1/16		
	NO	REVISION	DATE	BY	± 1°	DRN BY: DSW DATE: 1/10/14 SCALE: 1/8 DRAWN: HJC 105558DG SHEET 1 OF 1