

HGP Open Part Number	Schematic Drawing #	Approx Weight (LBS)
HGP0050AW0S0000	29597-S	130
HGP0050AW0C0000	29597	135
HGP0050AW0S1000	29597-PQ1	133
HGP0050AW0C1000	29597-PQ	138

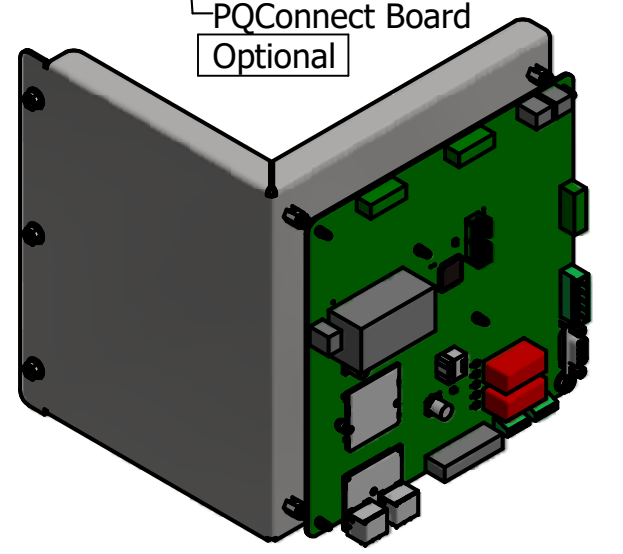
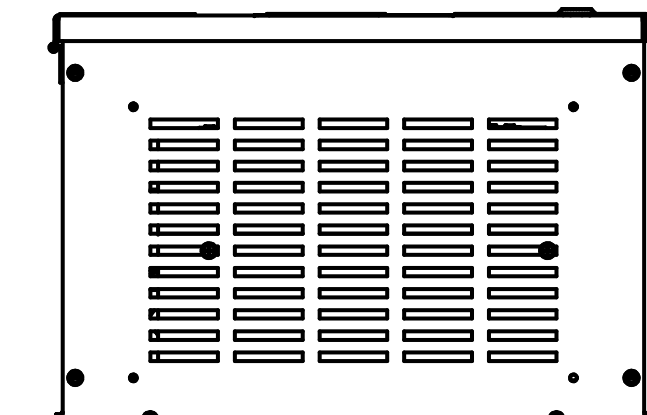
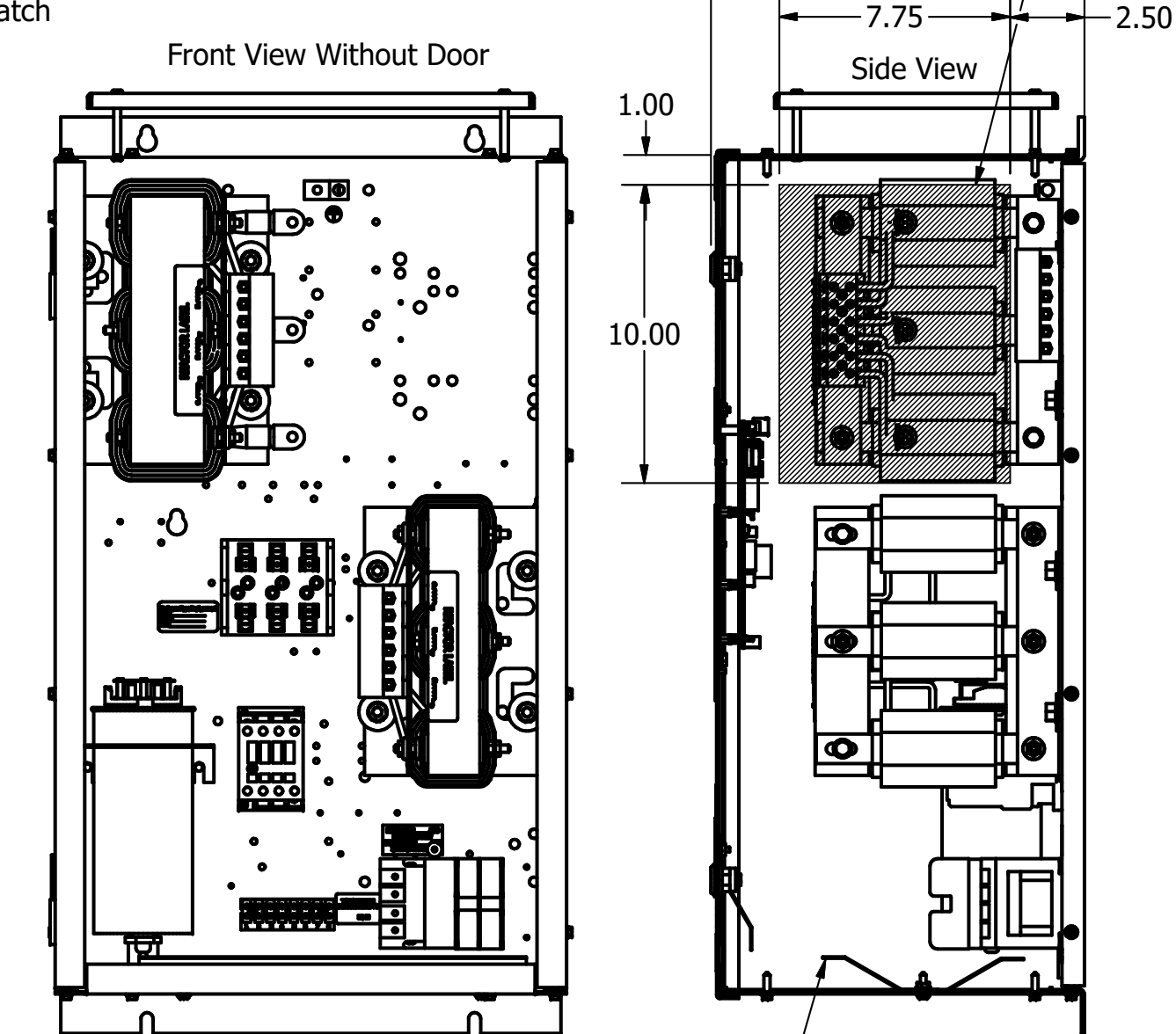
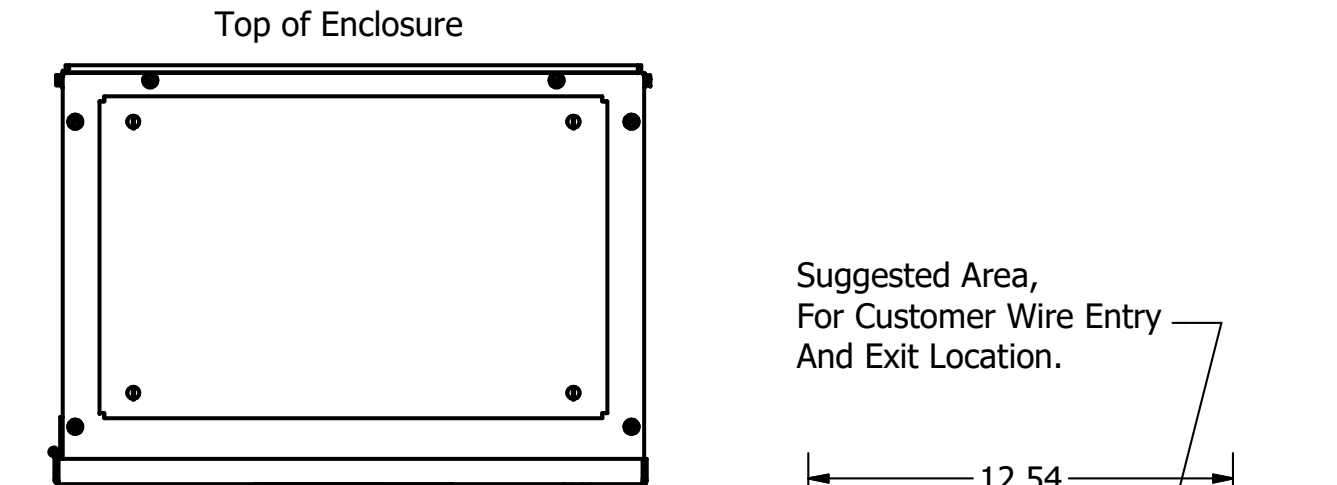
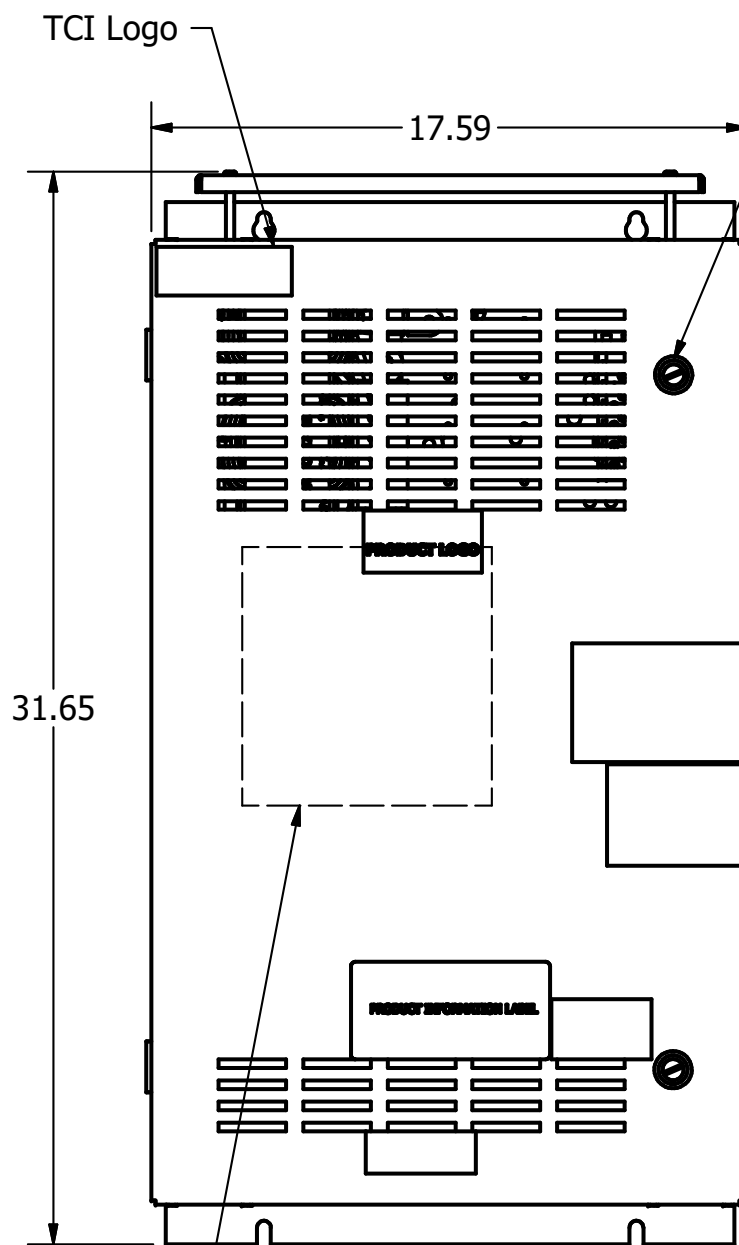
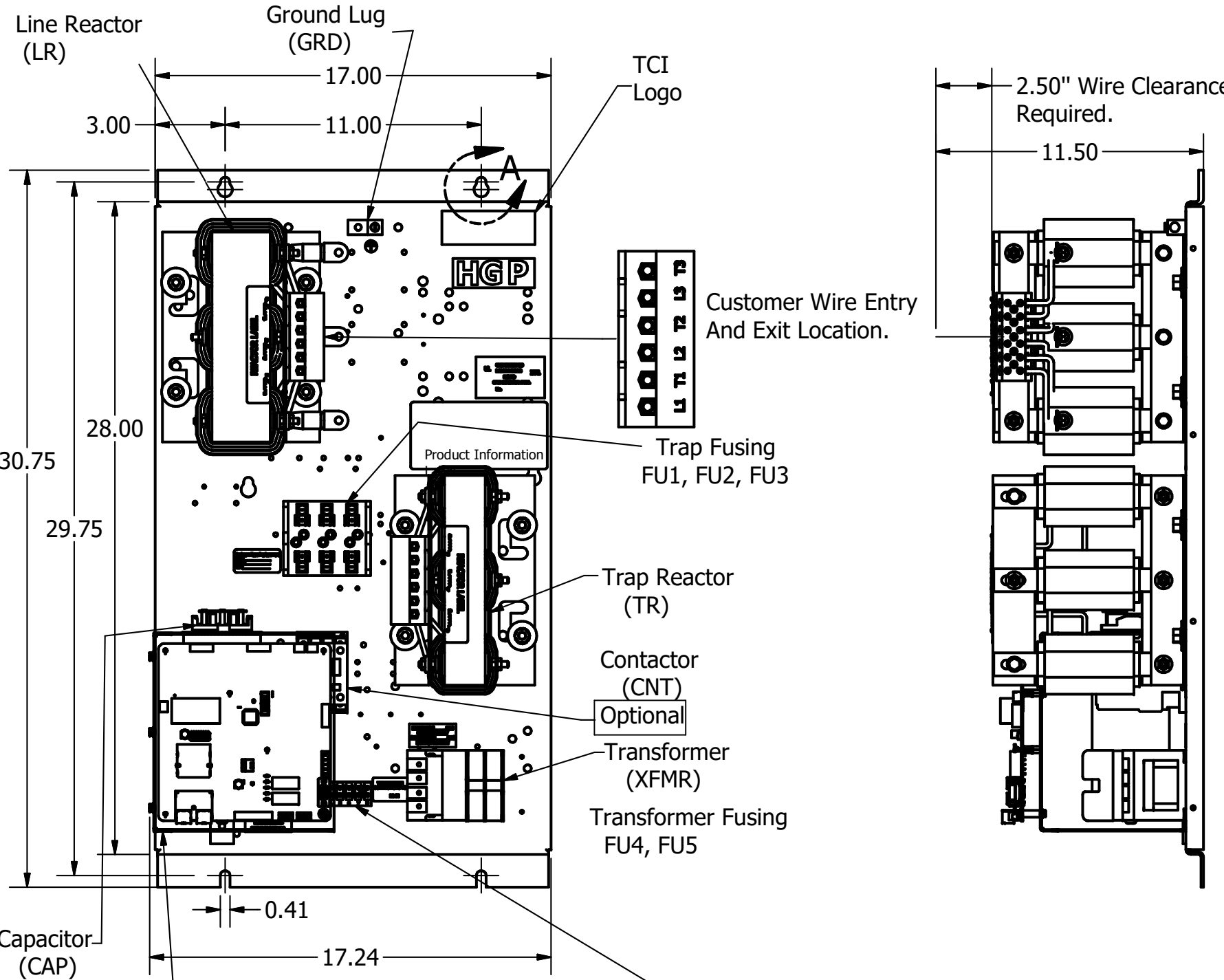
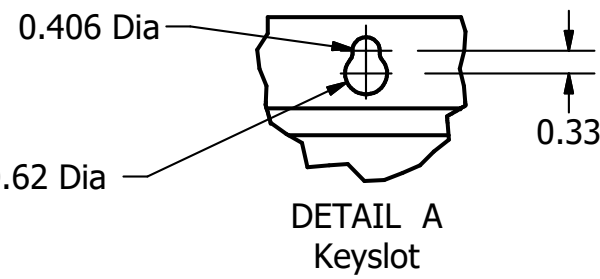
HGP Part Number	HorsePower (HP)	kVar	Harmonic	Voltage (V)	Hz.	Phase
HGP0050AW----	50	15	5th	480	60	3

HGP Eclosed Type 1 Part Number	Schematic Drawing #	Approx Weight (LBS)
HGP0050AW1S0000	29597-S	195
HGP0050AW1C0000	29597	200
HGP0050AW1S1000	29597-PQ1	196
HGP0050AW1C1000	29597-PQ	201

Note: For Torque Information
See IOM Manual

Customer Connections.
L1, T1, L2, T2, L3, T3
Wire Range: 1 AWG to 22 AWG.

Ground Lug
Wire Range: 1/0 to 14 AWG.



Terminal Block (TB)
Terminal Block Supplied With Contactor Option.

Note: Customer is responsible for proper cooling of filter components on open panels.
Capacitors Maximum Ambient 50°C.

Components	HGP0050AW----			
	0S0000/1S0000	0C0000/1C0000	0S1000/1S1000	0C1000/1C1000
Line Reactor (LR)	X	X	X	X
Trap Reactor (TR)	X	X	X	X
Capacitor (Cap)	X	X	X	X
Trap Fusing, FU1, FU2, FU3	X	X	X	X
Contactor (CNT)		X		X
Transformer (XFMR)	X	X	X	X
XFMR Fusing, FU4, FU5	X	X	X	X
PQConnect Board			X	X

Customer Is Responsible For Installation to Meet All National And Local Electrical Codes.

Material(s) Shall be RoHS Compliant

TCI, LLC CLAIMS PROPRIETARY RIGHTS IN THE MATERIAL HEREIN DISCLOSED. IT IS SUPPLIED WITHOUT PREJUDICE TO ANY PATENT RIGHTS OF TCI AND MAY NOT BE REPRODUCED OR USED TO MANUFACTURE ANYTHING SHOWN THEREIN WITHOUT WRITTEN PERMISSION FROM TCI.	TOLERANCES (EXCEPT AS NOTED)			
	DECIMAL	.XX ± .25		
	FRACTIONAL	.XXX ± .10		
	ANGULAR	± 1/16		
C	PQConnect Board Added.	6/14/18	DSW	
NO	REVISION	DATE	BY	

W132 N10611 Grant Drive
Germantown, WI 53022

HarmonicGuard Passive
HGP, 50HP, 480/3/60, Open and Type 1.

DRN BY: DSW DATE: 10/11/13
SCALE: 1/8 APRVD: 105484DG
SIZE: C SHT 1 OF 1