

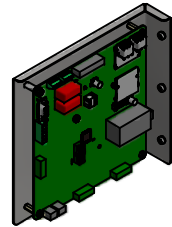
HGP Part Number	HorsePower (HP)	kVar	Harmonic	Voltage (V)	HZ.	Phase
HGP0040AW3----	40	15	5th	480	60	3

Note: For Torque Information See IOM Manual

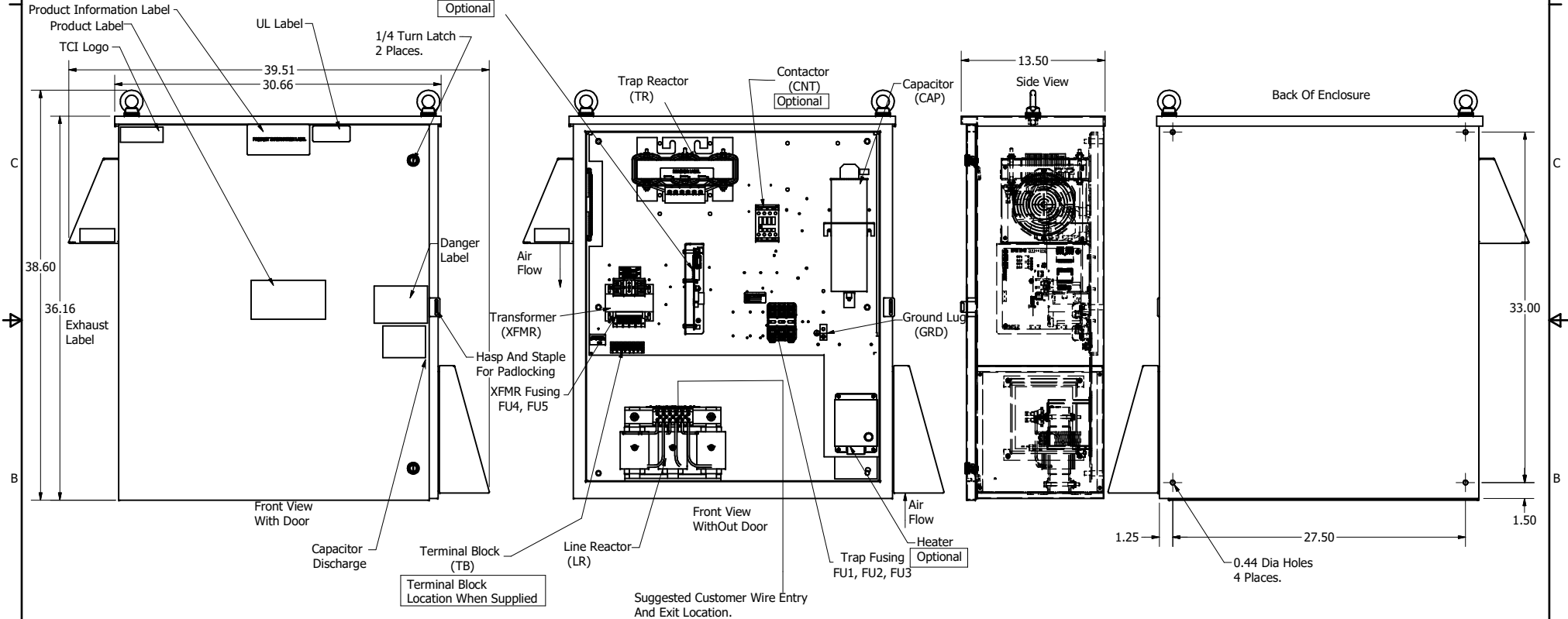
Customer Connections.
L1, T1, L2, T2, L3, T3
Wire Range: 1 AWG to 22 AWG.

Ground Lug
Wire Range: 1/0 to 14 AWG.

HGP Part Number	Schematic Drawing #	Approx Weight (LBS)
HGP0040AW3S0000	28697-4S	220
HGP0040AW3C0000	28697-4	221
HGP0040AW3C000H	28697-4H	225
HGP0040AW3S1000	29597-PQ1	222
HGP0040AW3C1000	29597-PQ	223
HGP0040AW3C100H	29597-PQH	227



PQConnect Board
Optional



HGP0040AW3----						
Components	S0000	C0000	C000H	S1000	C1000	C100H
Line Reactor (LR)	x	x	x	x	x	x
Trap Reactor (TR)	x	x	x	x	x	x
Capacitor (Cap)	x	x	x	x	x	x
Trap Fusing, FU1, FU2, FU3	x	x	x	x	x	x
Contactor (CNT)		x	x		x	x
Transformer (XFMR)	x	x	x	x	x	x
XFMR Fusing, FU4, FU5	x	x	x	x	x	x
Heater			x			x
PQConnect Board				x	x	x

NOTE: USE ONLY HUBS OR FITTINGS THAT COMPLY WITH UL514B FOR TYPE 3R ENCLOSURES

Customer Is Responsible For Installation to Meet All National And Local Electrical Codes.

Material(s) Shall be RoHS Compliant

TCI, LLC CLAIMS PROPRIETARY RIGHTS IN THE MATERIAL HEREIN DISCLOSED. IT IS SUPPLIED WITHOUT PREJUDICE TO ANY PATENT RIGHTS OF TCI AND MAY NOT BE REPRODUCED OR USED TO MANUFACTURE ANYTHING SHOWN THEREIN WITHOUT WRITTEN PERMISSION FROM TCI.	TOLERANCES (EXCEPT AS NOTED) DECIMAL .XX ± .25 .XXX ± .10		TCI W132 N10611 Grant Drive Germantown, WI 53022		
	FRACTIONAL ± 1/16		HarmonicGuard Passive HGP, 40HP, 480/3/60, Type 3R		
	DESIGNED BY: DSW DATE: 1/21/14 SCALE: 1/8	DRAWN BY: DSW DATE: 1/21/14	CHECKED BY: DSW DATE: 1/21/14	PART NUMBER: 105557DG SHEET: 1 OF 1	
	NO. REVISION DATE BY	± 1°			