

| HGP Open Part Number | Schematic Drawing # | Approx Weight (LBS) |
|----------------------|---------------------|---------------------|
| HGP0030AW0S0000 | 29597-S | 81 |
| HGP0030AW0C0000 | 29597 | 85 |
| HGP0030AW0S1000 | 29597-PQ1 | 84 |
| HGP0030AW0C1000 | 29597-PQ | 88 |

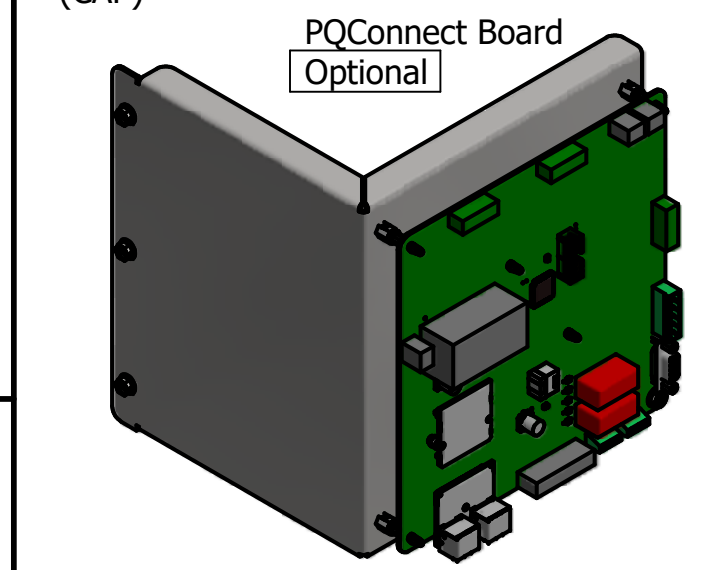
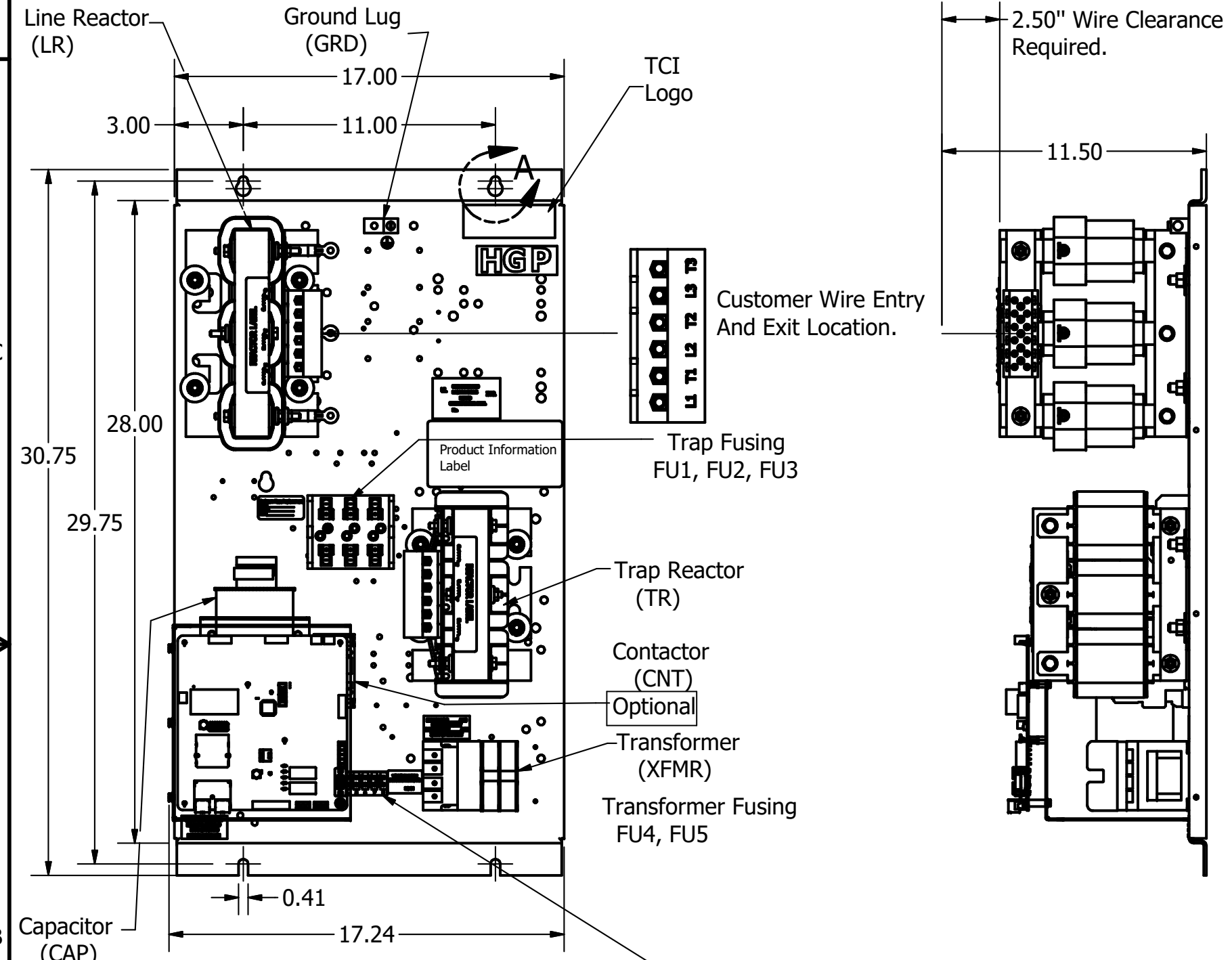
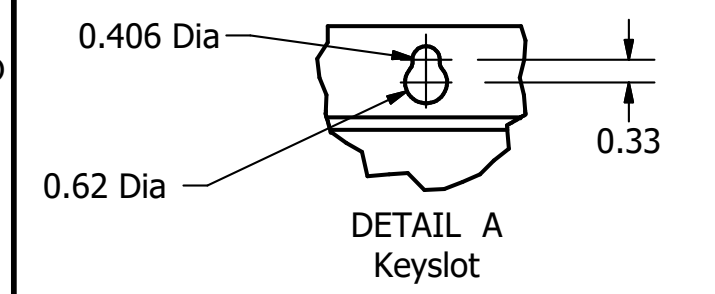
| HGP Part Number | HorsePower (HP) | kVar | Harmonic | Voltage (V) | Hz. | Phase |
|-----------------|-----------------|------|----------|-------------|-----|-------|
| HGP0030AW---- | 30 | 10 | 5th | 480 | 60 | 3 |

| HGP Eclosed Type 1 Part Number | Schematic Drawing # | Approx Weight (LBS) |
|--------------------------------|---------------------|---------------------|
| HGP0030AW1S0000 | 29597-S | 145 |
| HGP0030AW1C0000 | 29597 | 150 |
| HGP0030AW1S1000 | 29597-PQ1 | 146 |
| HGP0030AW1C1000 | 29597-PQ | 151 |

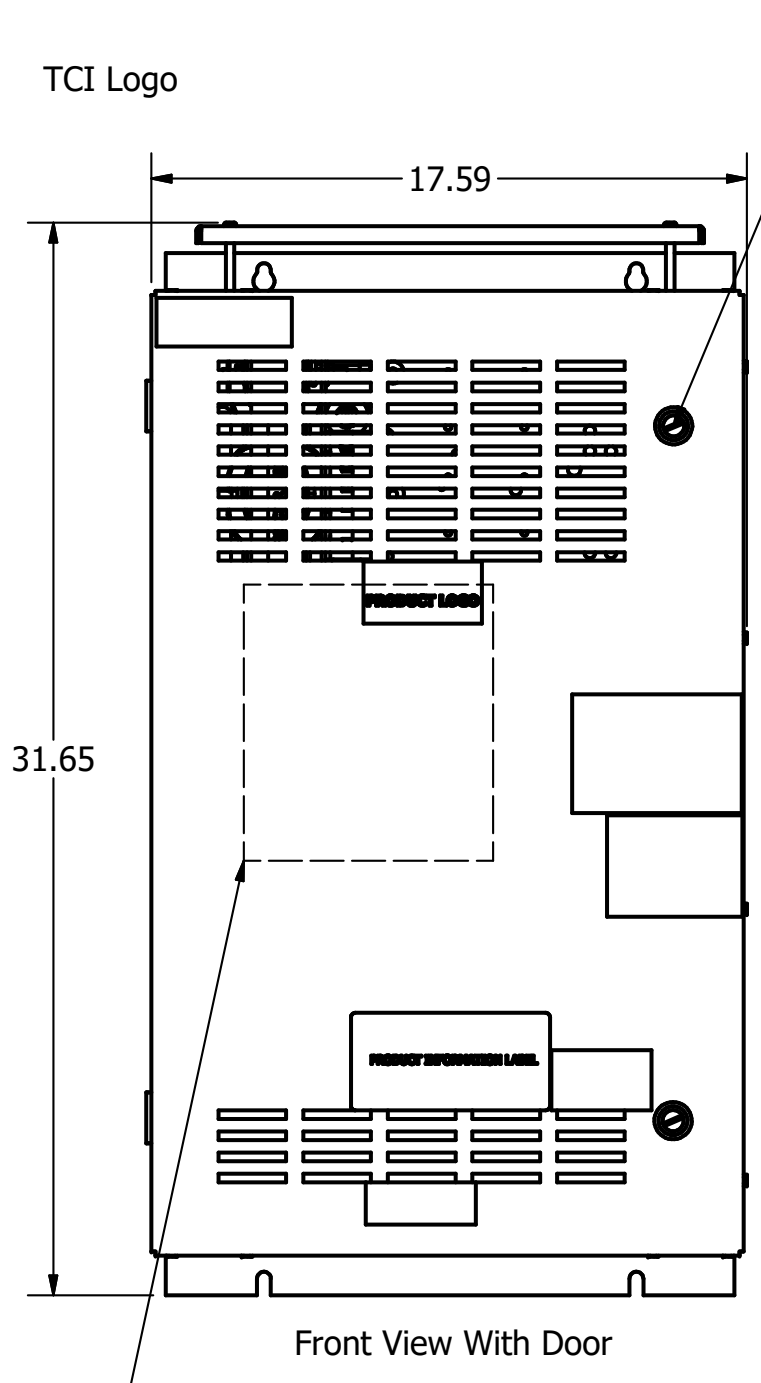
Note: For Torque Information See IOM Manual

Customer Connections.
L1, T1, L2, T2, L3, T3
Wire Range: 1 AWG to 22 AWG.

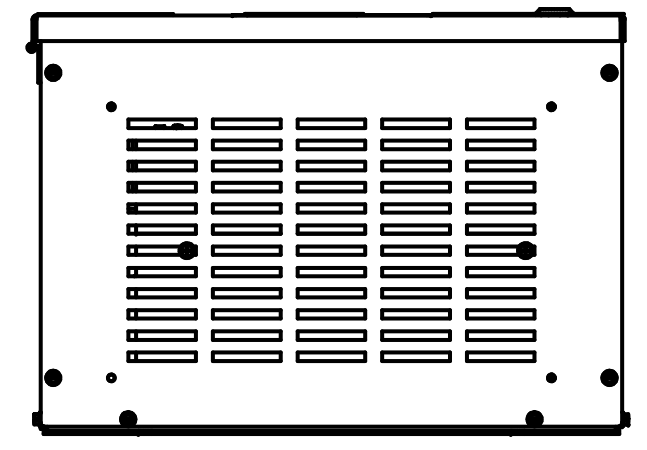
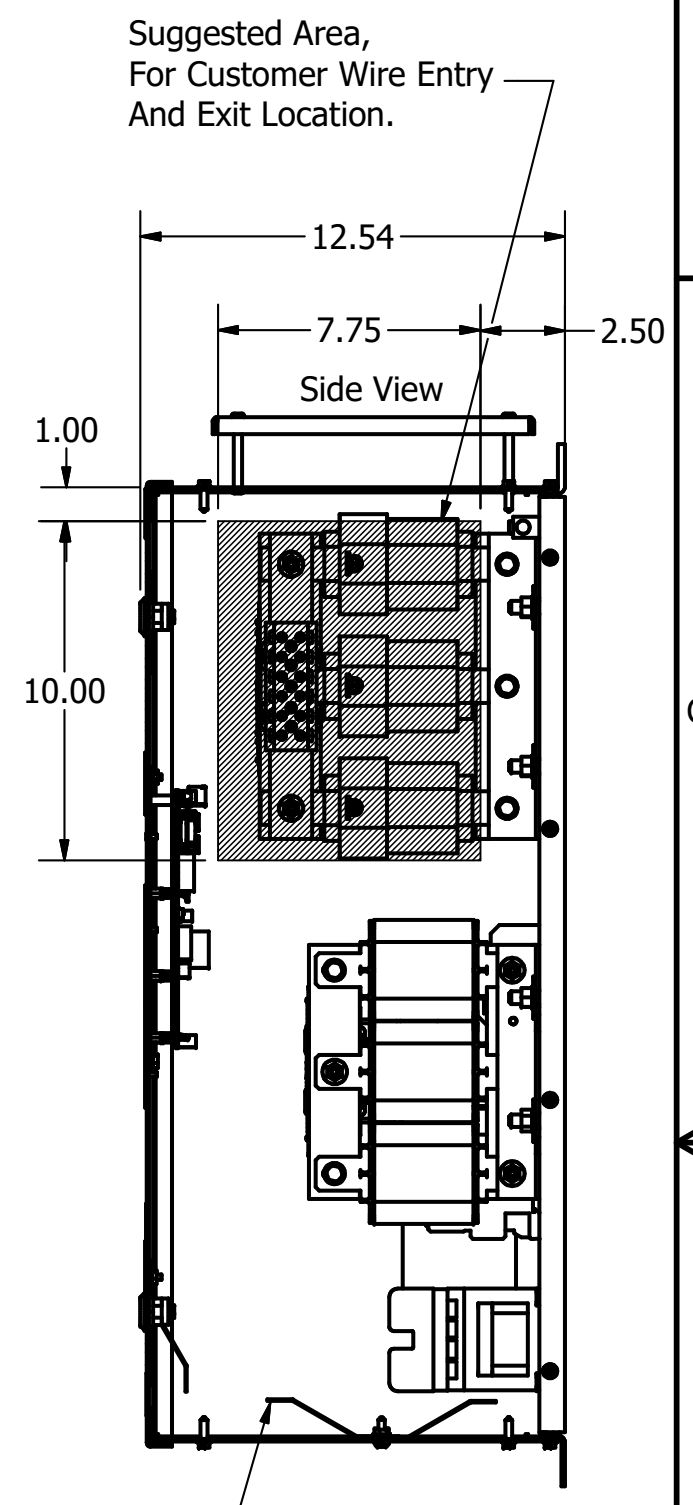
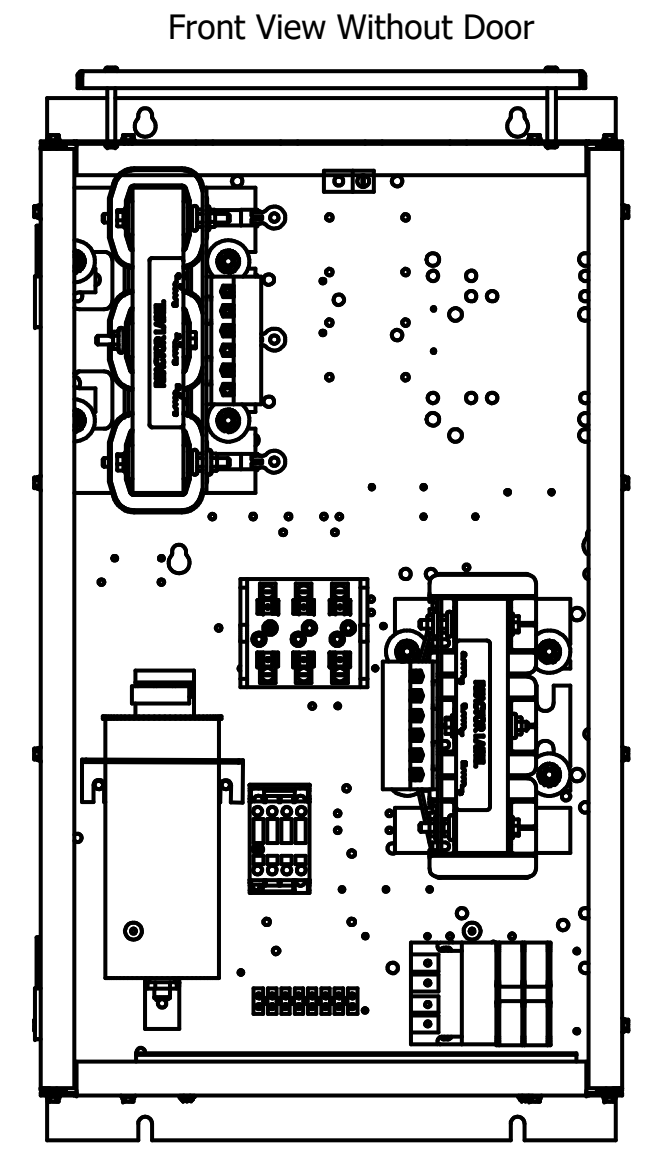
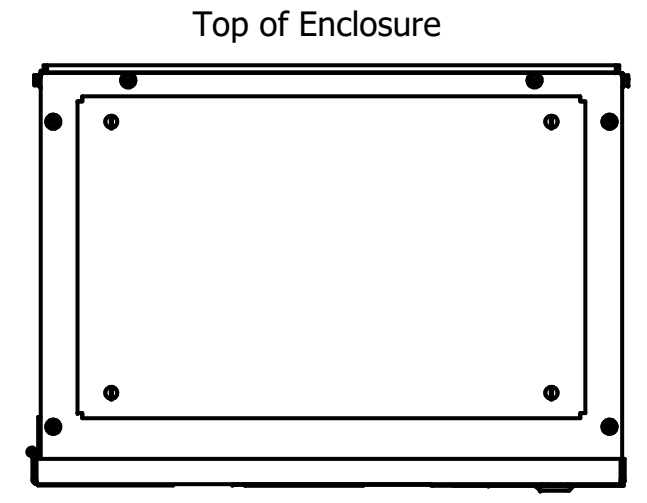
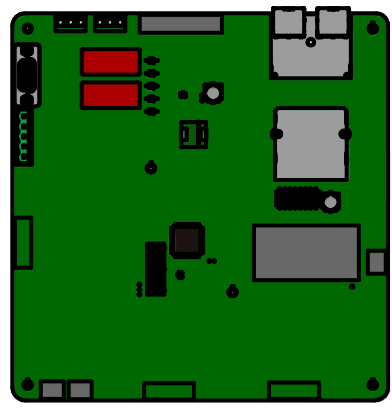
Ground Lug
Wire Range: 1/0 to 14 AWG.



Terminal Block (TB)
Terminal Block Supplied With Contactor Option.



PQConnect Board Mounted on Front Door OF Enclosure. Optional



UL Required Shields 3 Places.

Note: Customer is responsible for proper cooling of filter components on open panels. Capacitors Maximum Ambient 50°C.

| Components | HGP0030AW---- | | | |
|----------------------------|---------------|---------------|---------------|---------------|
| | 0S0000/1S0000 | 0C0000/1C0000 | 0S1000/1S1000 | 0C1000/1C1000 |
| Line Reactor (LR) | X | X | X | X |
| Trap Reactor (TR) | X | X | X | X |
| Capacitor (Cap) | X | X | X | X |
| Trap Fusing, FU1, FU2, FU3 | X | X | X | X |
| Contactor (CNT) | | X | | X |
| Transformer (XFMR) | X | X | X | X |
| XFMR Fusing, FU4, FU5 | X | X | X | X |
| PQConnect Board | | | X | X |

Customer Is Responsible For Installation to Meet All National And Local Electrical Codes.

Material(s) Shall be RoHS Compliant

| | | | | | | |
|--|--------|----------|------|------------------------------|---|------------|
| TCI, LLC CLAIMS PROPRIETARY RIGHTS IN THE MATERIAL HEREIN DISCLOSED. IT IS SUPPLIED WITHOUT PREJUDICE TO ANY PATENT RIGHTS OF TCI AND MAY NOT BE REPRODUCED OR USED TO MANUFACTURE ANYTHING SHOWN THEREIN WITHOUT WRITTEN PERMISSION FROM TCI. | DRN BY | DATE | BY | TOLERANCES (EXCEPT AS NOTED) | W132 N10611 Grant Drive Germantown, WI 53022 HarmonicGuard Passive HGP, 30HP, 480/3/60, Open and Type 1. | |
| | DSW | 6/14/18 | DSW | DECIMAL | | |
| | NO | REVISION | DATE | BY | | FRACTIONAL |
| | | | | | | ANGULAR |
| | | | | ± 1° | DRN BY: DSW DATE: 10/31/13 SCALE: 1/8 APRVD: [Signature] SIZE: C 105482DG SHT 1 OF 1 | |