

HGP Open Part Number	Schematic Drawing #	Approx Weight (LBS)
HGP0020AW0S0000	29597-S	61
HGP0020AW0C0000	29597	65
HGP0020AW0S1000	29597-PQ1	64
HGP0020AW0C1000	29597-PQ	67

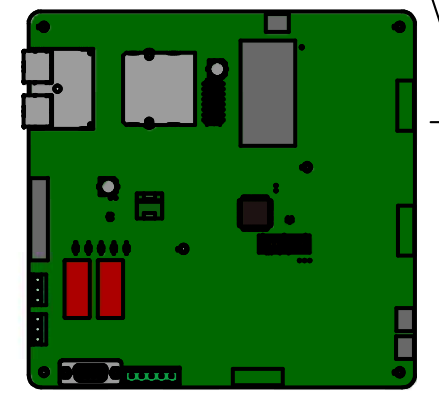
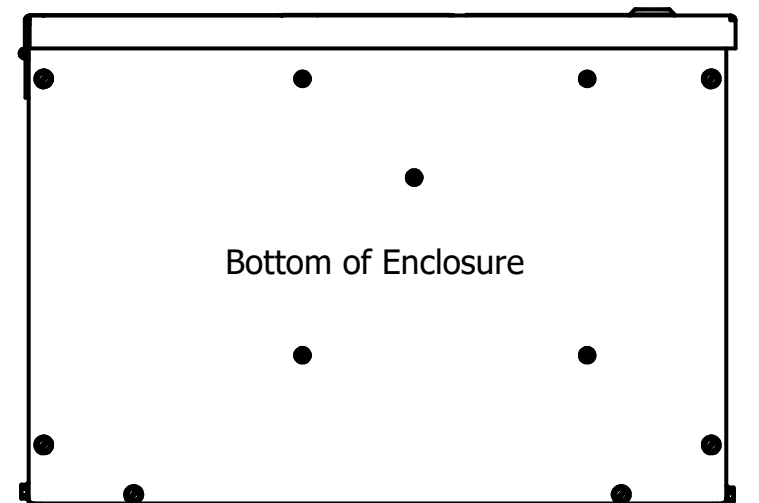
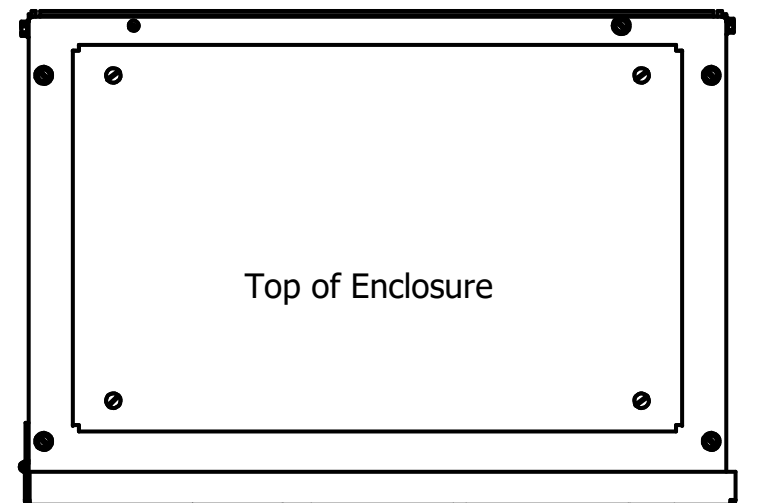
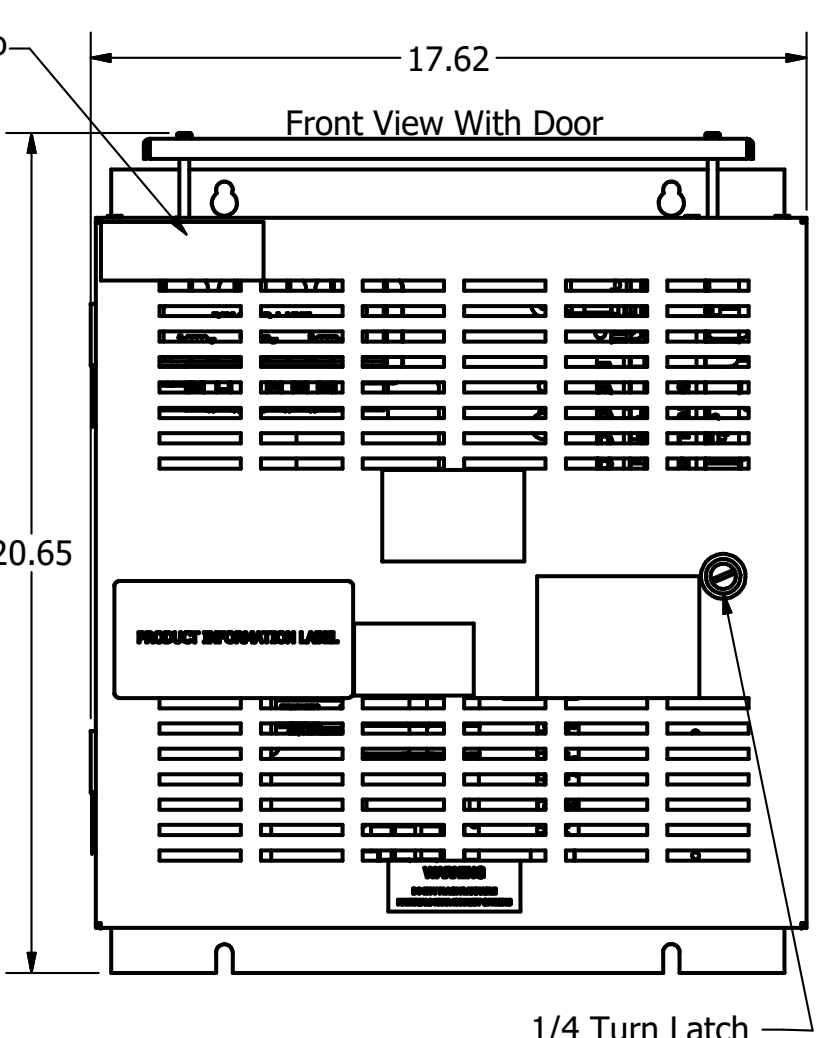
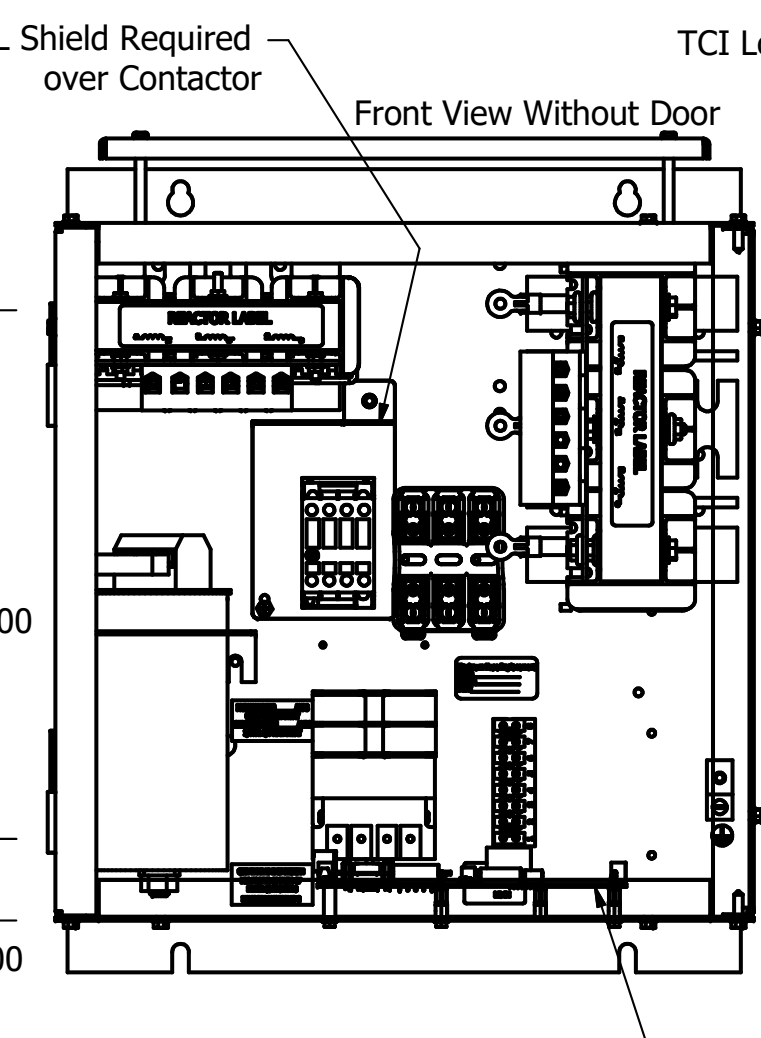
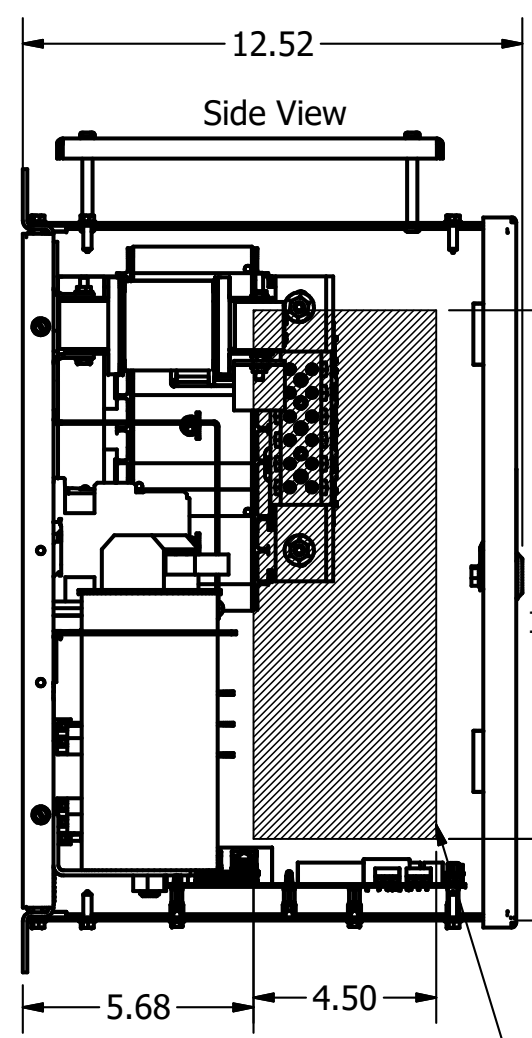
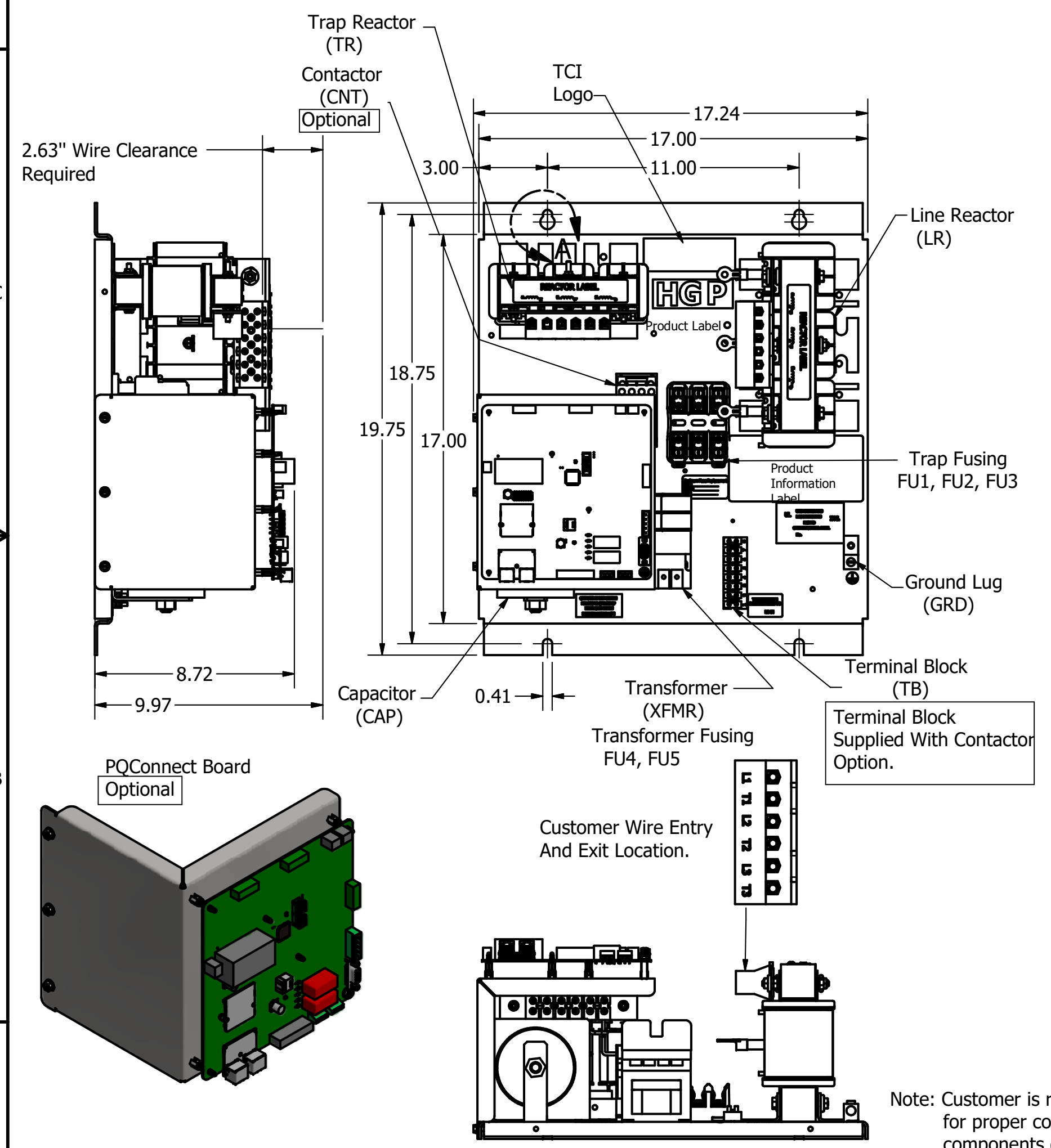
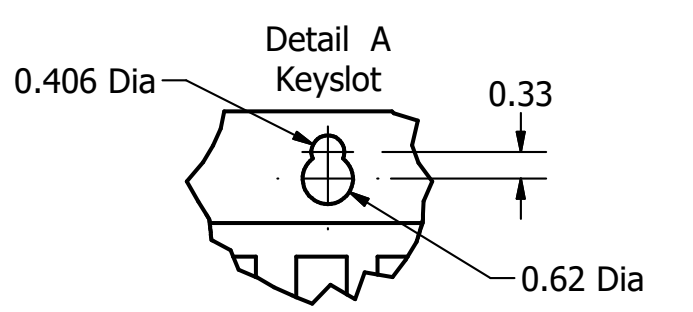
HGP Part Number	HorsePower (HP)	kVar	Harmonic	Voltage (V)	Hz.	Phase
HGP0020AW----	20	6	5th	480	60	3

HGP Eclosed Type 1 Part Number	Schematic Drawing #	Approx Weight (LBS)
HGP0020AW1S0000	29597-S	86
HGP0020AW1C0000	29597	90
HGP0020AW1S1000	29597-PQ1	88
HGP0020AW1C1000	29597-PQ	92

Note: For Torque Information See IOM Manual

Customer Connections.
L1, T1, L2, T2, L3, T3
Wire Range: 1 AWG to 22 AWG.

Ground Lug
Wire Range: 1/0 to 14 AWG.



PQConnect Board Mounted on Bottom OF Enclosure. Optional

Note: Customer is responsible for proper cooling of filter components on open panels. Capacitors Maximum Ambient 50°C.

Components	HGP0020AW----			
	0S0000/1S0000	0C0000/1C0000	0S1000/1S1000	0C1000/1C1000
Line Reactor (LR)	X	X	X	X
Trap Reactor (TR)	X	X	X	X
Capacitor (Cap)	X	X	X	X
Trap Fusing, FU1, FU2, FU3	X	X	X	X
Contactor (CNT)		X		X
Transformer (XFMR)	X	X	X	X
XFMR Fusing, FU4, FU5	X	X	X	X
PQConnect Board			X	X

Customer Is Responsible For Installation to Meet All National And Local Electrical Codes.

Material(s) Shall be RoHS Compliant

TCI, LLC CLAIMS PROPRIETARY RIGHTS IN THE MATERIAL HEREIN DISCLOSED. IT IS SUPPLIED WITHOUT PREJUDICE TO ANY PATENT RIGHTS OF TCI AND MAY NOT BE REPRODUCED OR USED TO MANUFACTURE ANYTHING SHOWN THEREIN WITHOUT WRITTEN PERMISSION FROM TCI.				TOLERANCES (EXCEPT AS NOTED)	W132 N10611 Grant Drive Germantown, WI 53022 HarmonicGuard Passive HGP, 20HP, 480/3/60, Open and Type 1.
				DECIMAL	
				.XX ± .25 .XXX ± .10	
				FRACTIONAL ± 1/16	
	E	PQConnect Board Added.	6/14/18	DSW	DRN BY: DSW DATE: 11/1/13
	NO	REVISION	DATE	BY	SCALE: 1/8
					105480DG
					ANGULAR ± 1°
					SIZE C
					SHT 1 OF 1