

HGP Open Part Number	Schematic Drawing #	Approx Weight (LBS)
HGP0008AW0S0000	29597-TS	41
HGP0008AW0C0000	29597-T	45
HGP0008AW0S1000	29597-PQ3	44
HGP0008AW0C1000	29597-PQ2	48

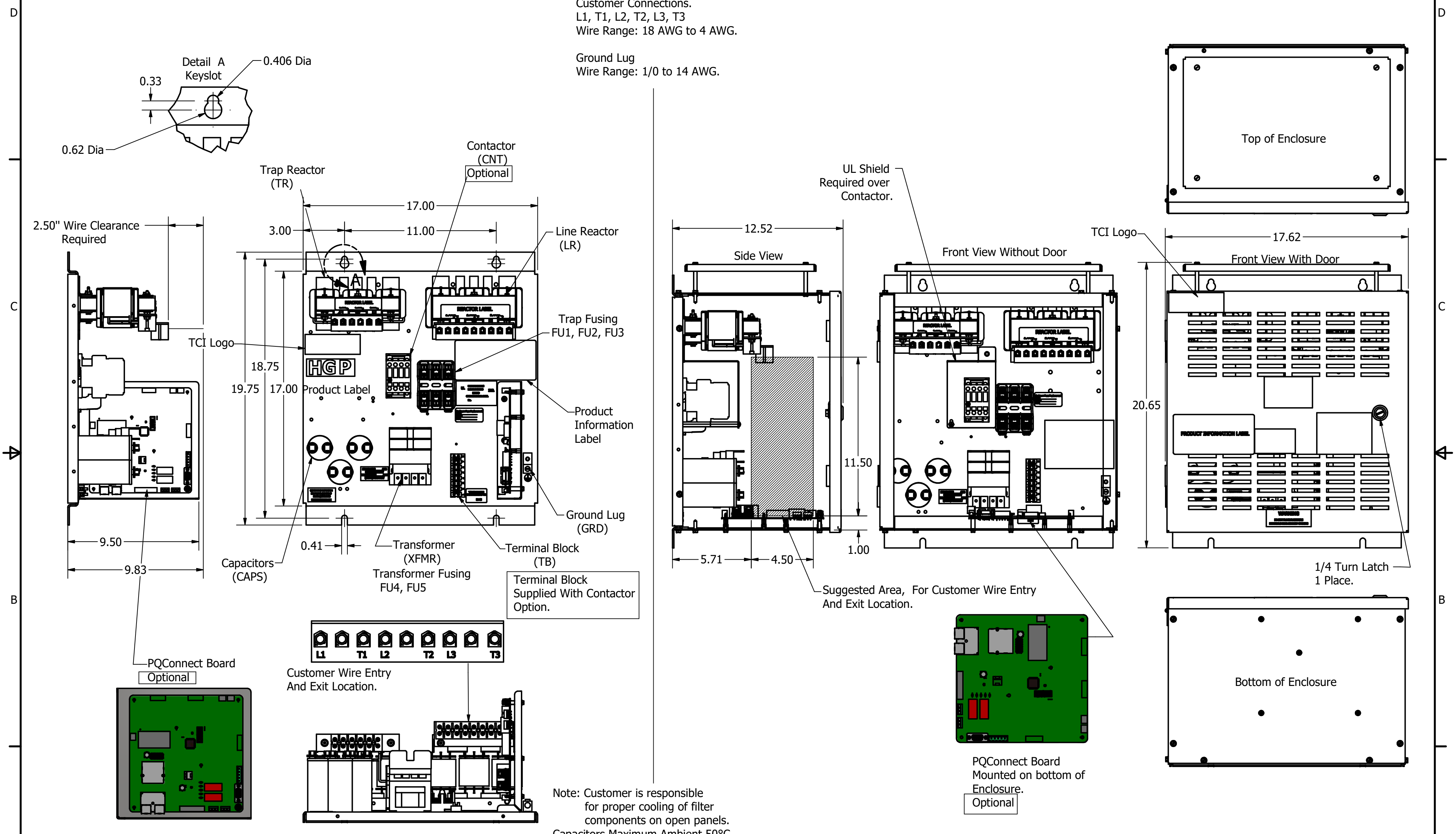
HGP Part Number	HorsePower (HP)	kVar	Harmonic	Voltage (V)	Hz.	Phase
HGP0008AW----	7.5	3	5th	480	60	3

HGP Eclosed Type 1 Part Number	Schematic Drawing #	Approx Weight (LBS)
HGP0008AW1S0000	29597-TS	66
HGP0008AW1C0000	29597-T	70
HGP0008AW1S1000	29597-PQ3	68
HGP0008AW1C1000	29597-PQ2	72

Note: For Torque Information
See IOM Manual

Customer Connections.
L1, T1, L2, T2, L3, T3
Wire Range: 18 AWG to 4 AWG.

Ground Lug
Wire Range: 1/0 to 14 AWG.



Note: Customer is responsible for proper cooling of filter components on open panels.
Capacitors Maximum Ambient 50°C.

Components	HGP0008AW----			
	0S0000/1S0000	0C0000/1C0000	0S1000/1S1000	0C1000/1C1000
Line Reactor (LR)	X	X	X	X
Trap Reactor (TR)	X	X	X	X
Capacitor (Cap)	X	X	X	X
Trap Fusing, FU1, FU2, FU3	X	X	X	X
Contactor (CNT)		X		X
Transformer (XFMR)	X	X	X	X
XFMR Fusing, FU4, FU5	X	X	X	X
PQConnect Board			X	X

Customer Is Responsible For Installation to Meet All National And Local Electrical Codes.

Material(s) Shall be RoHS Compliant

TCI, LLC CLAIMS PROPRIETARY RIGHTS IN THE MATERIAL HEREIN DISCLOSED. IT IS SUPPLIED WITHOUT PREJUDICE TO ANY PATENT RIGHTS OF TCI AND MAY NOT BE REPRODUCED OR USED TO MANUFACTURE ANYTHING SHOWN THEREIN WITHOUT WRITTEN PERMISSION FROM TCI.	TOLERANCES (EXCEPT AS NOTED)		W132 N10611 Grant Drive Germantown, WI 53022 HarmonicGuard Passive HGP, 8HP, 480/3/60, Open and Type 1.
	DECIMAL		
	.XX ± .25 .XXX ± .10		
	FRACTIONAL		
D	PQConnect Board Added.	6/14/18	DSW
NO	REVISION	DATE	BY
		ANGULAR	± 1°
DRN BY: DSW		DATE: 11/1/13	105477DG
SCALE: 1/8		APRVD:	SIZE C
			SHT 1 OF 1