

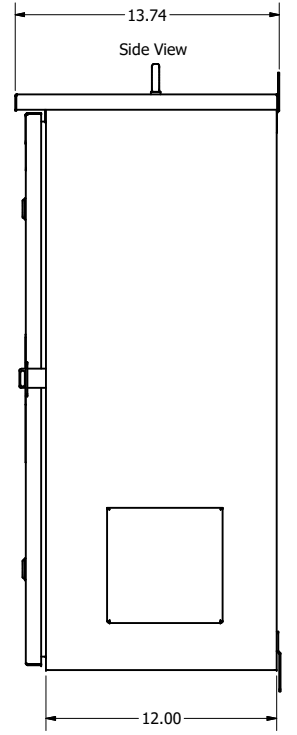
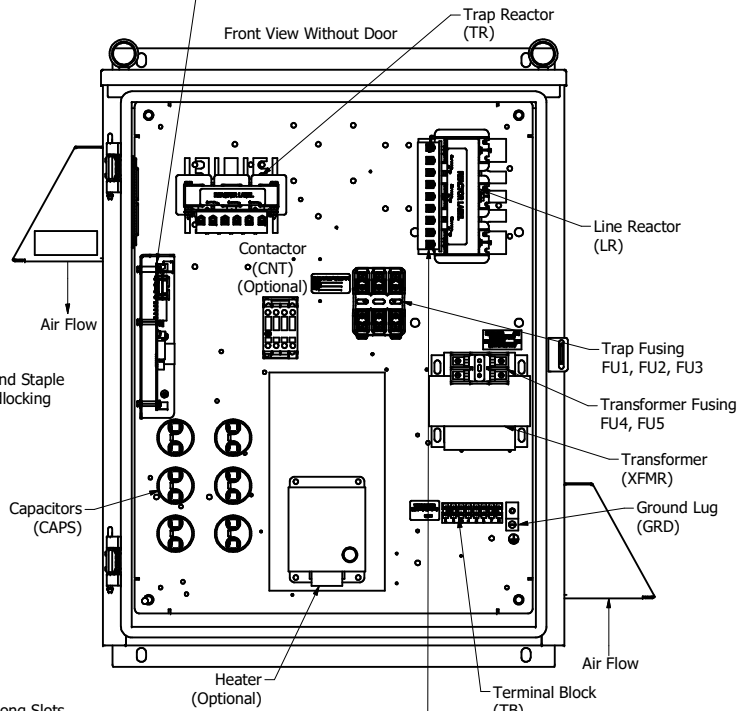
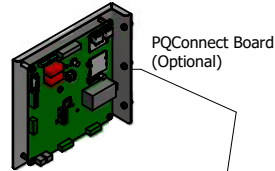
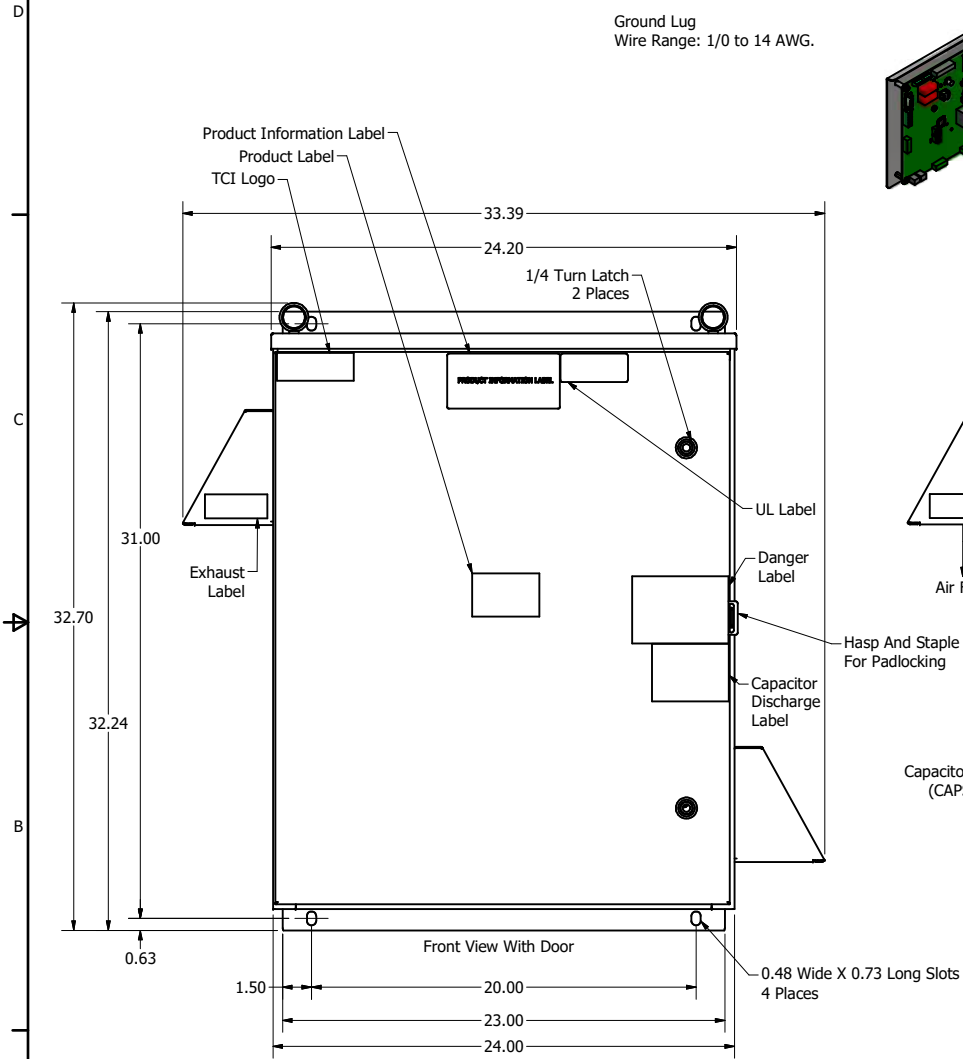
HGP Part Number	HorsePower (HP)	kVar	Harmonic	Voltage (V)	Hz.	Phase
HGP0005CW3----	5	1.6	5th	600	60	3

Note: For Torque Information See IOM Manual

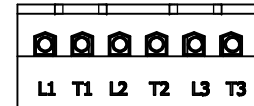
Customer Connections.
L1, T1, L2, T2, L3, T3
Wire Range: 1 AWG to 22 AWG.

Ground Lug
Wire Range: 1/0 to 14 AWG.

HGP Part Number	Schematic Drawing #	Approx Weight (LBS)
HGP0005CW3S0000	31663-3	109
HGP0005CW3C0000	31663-4	110
HGP0005CW3C000H	31663-5	114
HGP0005CW3S1000	31663-PQ1	112
HGP0005CW3C1000	31663-PQ	113
HGP0005CW3C100H	31663-PQH	117



Components	HGP0005CW3----					
	S0000	C0000	C000H	S1000	C1000	C100H
Line Reactor (LR)	x	x	x	X	X	X
Trap Reactor (TR)	x	x	x	X	X	X
Capacitor (Cap)	x	x	x	X	X	X
Trap Fusing, FU1, FU2, FU3	x	x	x	X	X	X
Contactor (CNT)		x	x		X	X
Transformer (XFMR)	x	x	x	X	X	X
XFMR Fusing, FU4, FU5	x	x	x	X	X	X
Heater			x			X
PQConnect Board				X	X	X



NOTE: USE ONLY HUBS OR FITTINGS THAT COMPLY WITH UL514B FOR TYPE 3R ENCLOSURES

TCI, LLC CLAIMS PROPRIETARY RIGHTS IN THE MATERIAL HEREIN DISCLOSED. IT IS SUPPLIED WITHOUT PREJUDICE TO ANY PATENT RIGHTS OF TCI AND MAY NOT BE REPRODUCED OR USED TO MANUFACTURE ANYTHING SHOWN THEREIN WITHOUT WRITTEN PERMISSION FROM TCI.

AS DESIGNED	07/02/19	JHM	± 1/16
NO	REVISION	DATE	BY

TOLERANCES (EXCEPT AS NOTED)		SCALE: 1/5	
DECIMAL	.XX ± .25 .XXX ± .10	DATE	07/02/19
FRACTIONAL	± 1/16	DRN BY	JHM
ANGULAR	± 1°	DATE	07/02/19
TOLERANCES (EXCEPT AS NOTED)		DATE	07/02/19
TOLERANCES (EXCEPT AS NOTED)		DATE	07/02/19

Customer Is Responsible For Installation to Meet All National And Local Electrical Codes.

Material(s) Shall be RoHS Compliant

TCI W132 N10611 Grant Drive Germantown, WI 53022

HarmonicGuard Passive
HGP, 5HP, 30HP, 600/3/60, Type 3R

108186DG