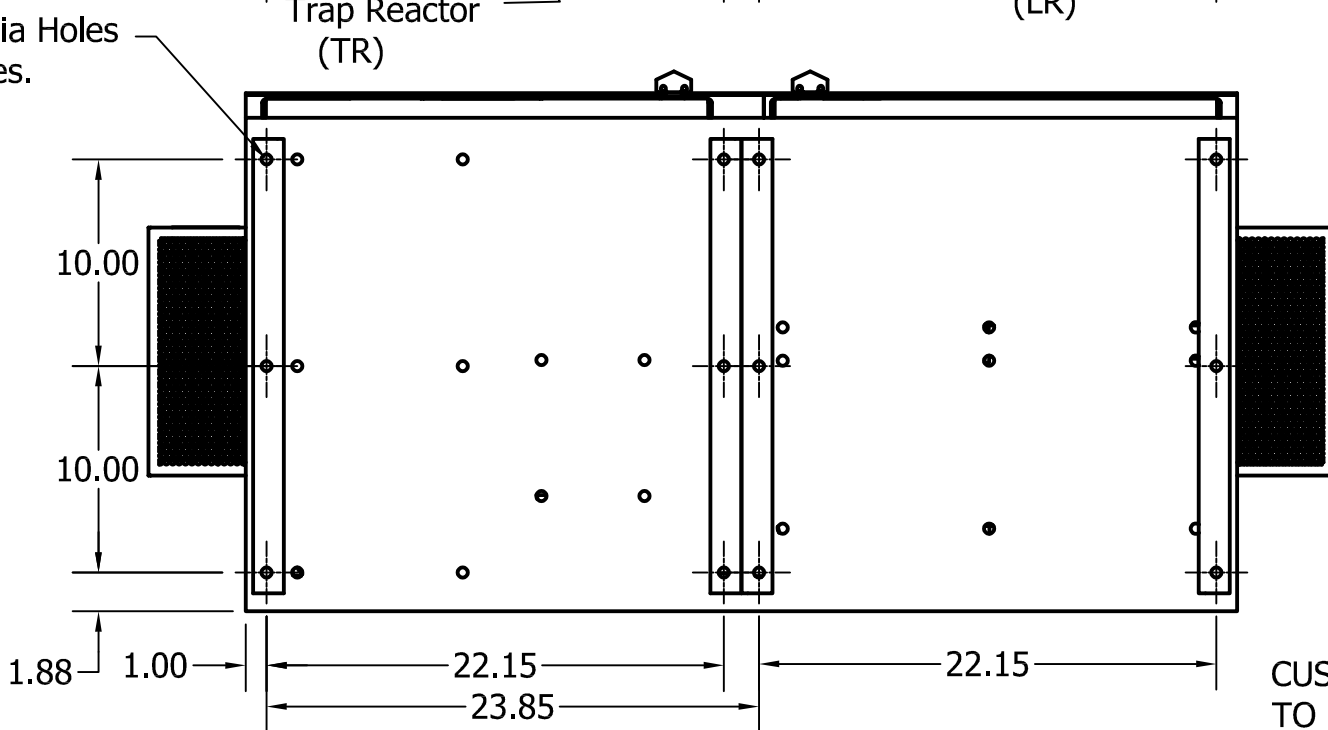
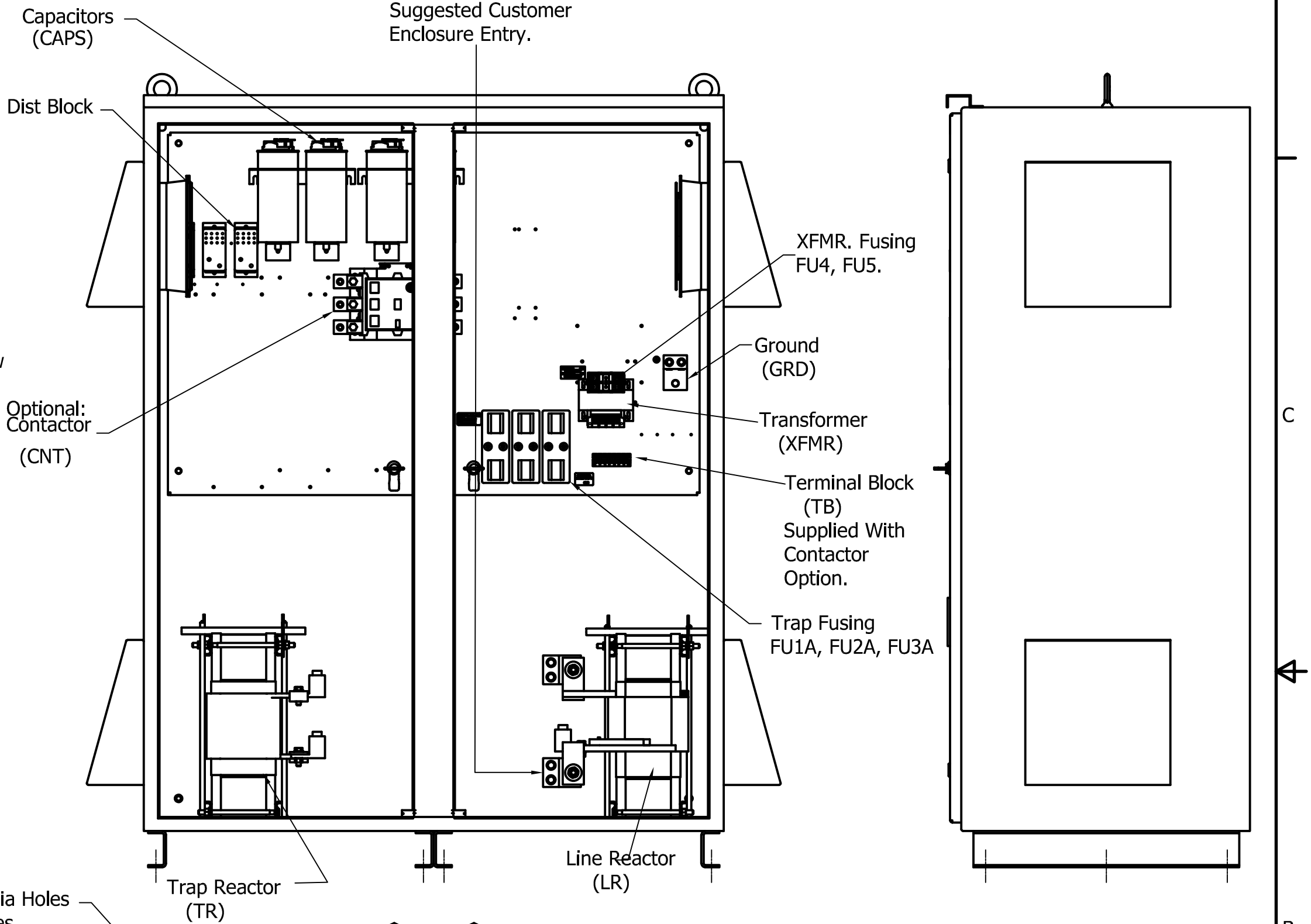
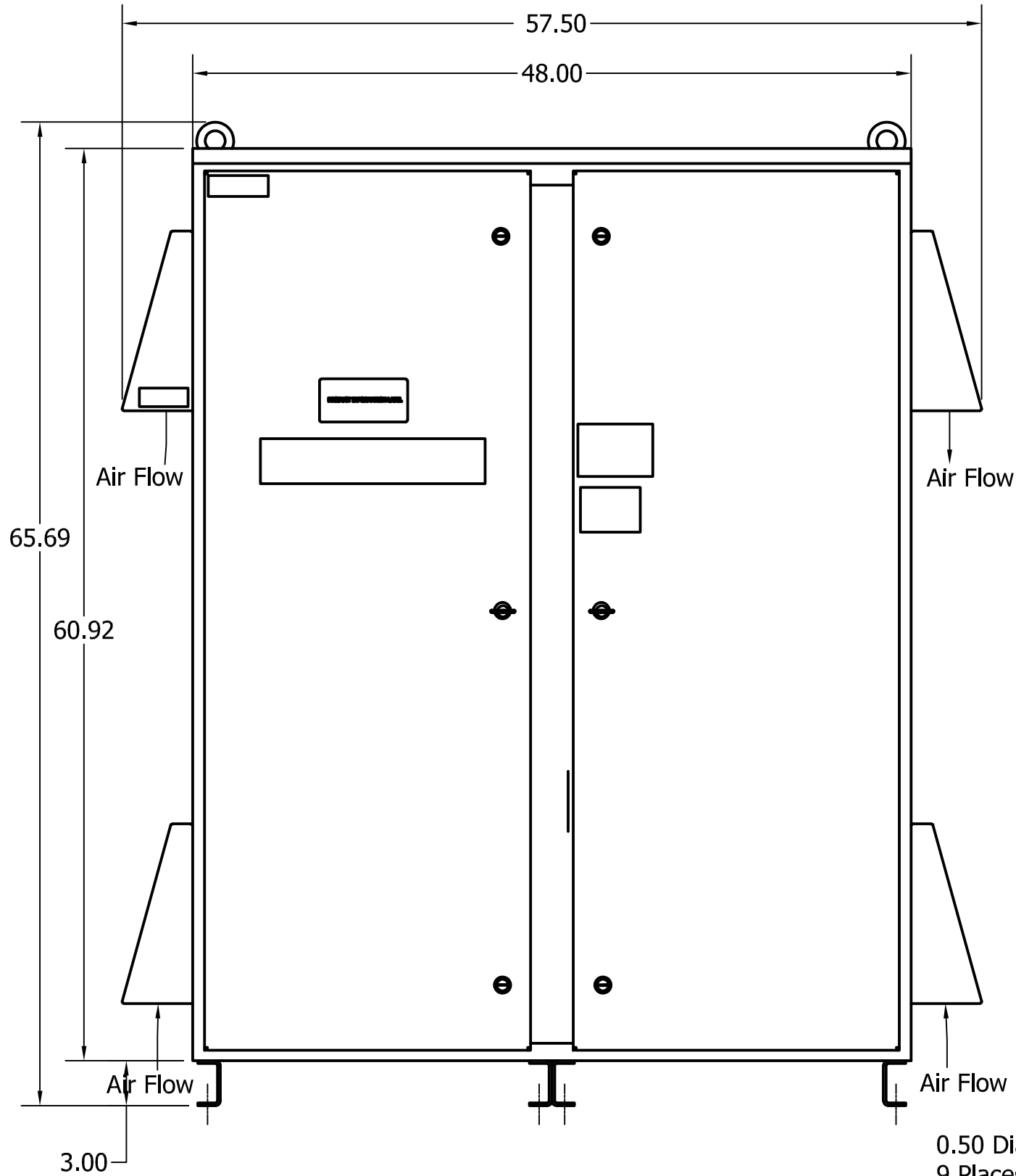
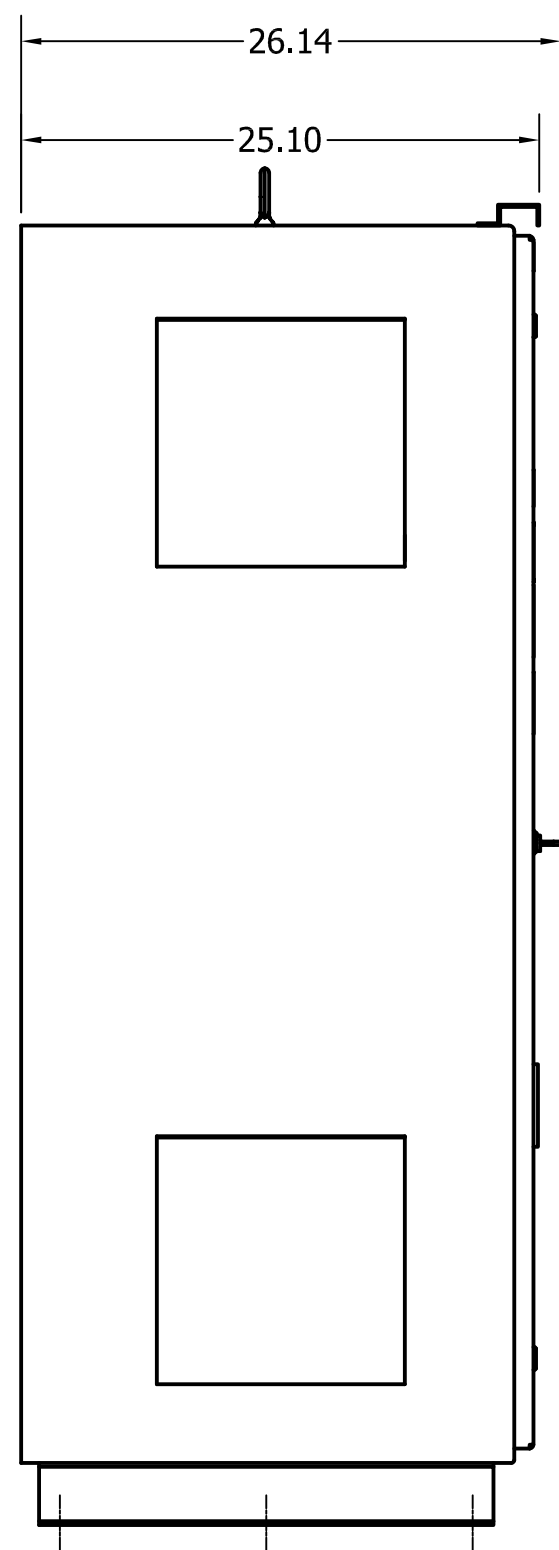


Unit Specifications					
kVar	Harmonic	Volt	HZ.	Phase	HP
75	5TH	480	60	3	500

TCI Part Number	Option	Weight	Schematic
HGL0500AW3S0000	Standard	1000lbs	30586-1S
HGL0500AW3C0000	Contactor	1015lbs	30586-1C

See IOM Manual For Wire Range  
And Tightening Torque.

Customer Connection  
L1 L2 L3  
T1 T2 T3  
Suggested Customer  
Enclosure Entry.



CUSTOMER IS RESPONSIBLE FOR INSTALLATION  
TO MEET ALL NATIONAL AND LOCAL ELETRICAL CODES.

NOTE: USE ONLY HUBS OR FITTINGS THAT COMPLY  
WITH UL514B FOR TYPE 3R ENCLOSURES  
Material(s) Shall be RoHS Compliant

TCI, LLC CLAIMS PROPRIETARY RIGHTS IN THE MATERIAL HEREIN DISCLOSED. IT IS SUPPLIED WITHOUT PREDJUDICE TO ANY PATENT RIGHTS OF TCI AND MAY NOT BE REPRODUCED OR USED TO MANUFACTURE ANYTHING SHOWN THEREIN WITHOUT WRITTEN PERMISSION FROM TCI.

NO	REVISION	DATE	BY	SCALE
A	AS DESIGNED	6/2/17	DSW	ANGULAR +/- 1°
NO				

TOLERANCES (EXCEPT AS NOTED)  
DECIMAL  
.XX +/- .25  
.XXX +/- .12  
FRACTIONAL  
+/- 1/16

**TCI**® W132 N10611 Grant Drive  
Germentown, WI 53022

HGL0500AW3C0000, 480V, 500HP, 3 Phase  
HGL0500AW3S0000, 480V, 500HP, 3 Phase  
60 Hz, Type 3R, Low C, Passive Harmonic Filter

DRN. BY: DSW  
SCALE: 1/8

DATE: 6/2/17  
APRVD.

DWG. No. 107041DG  
SHEET 1 OF 1