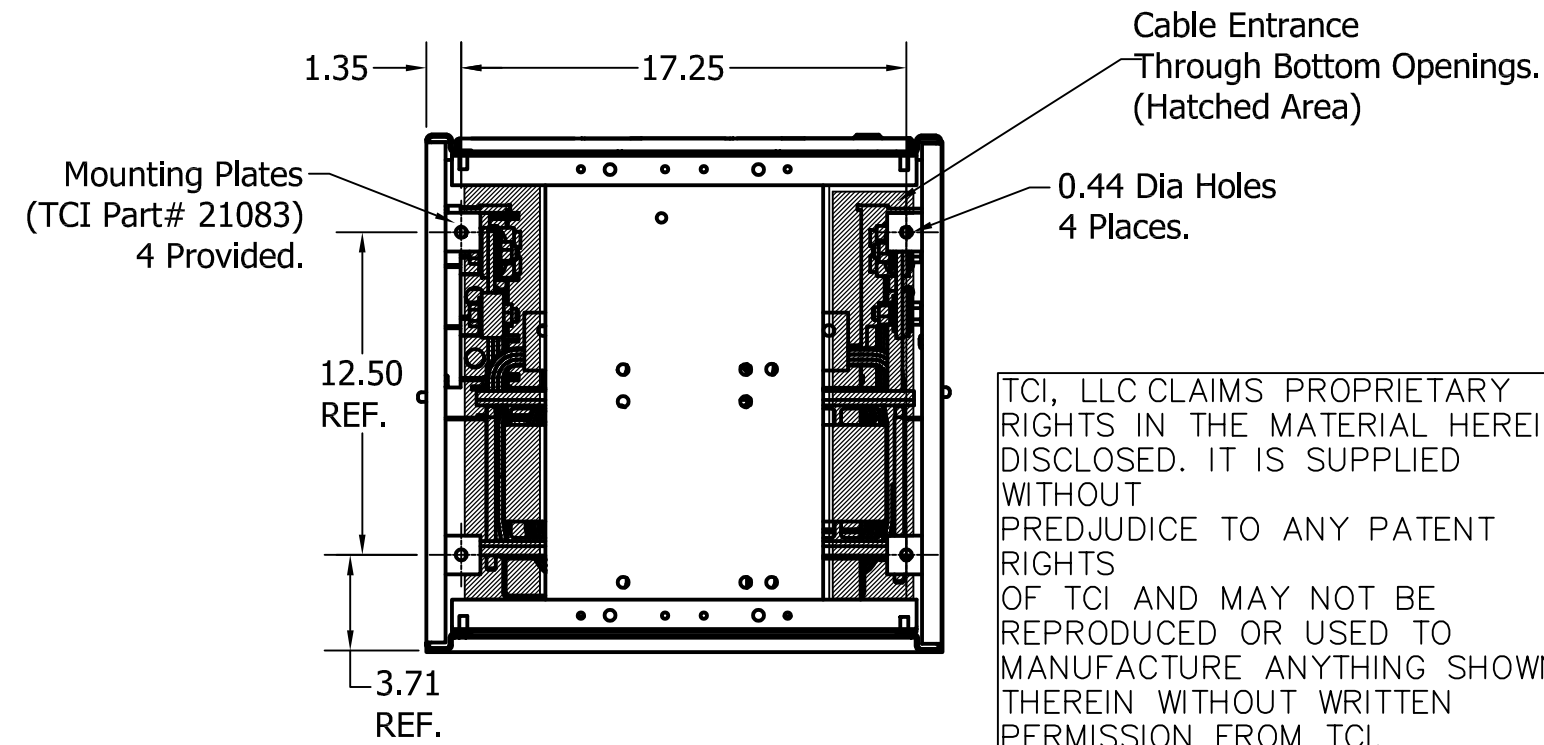
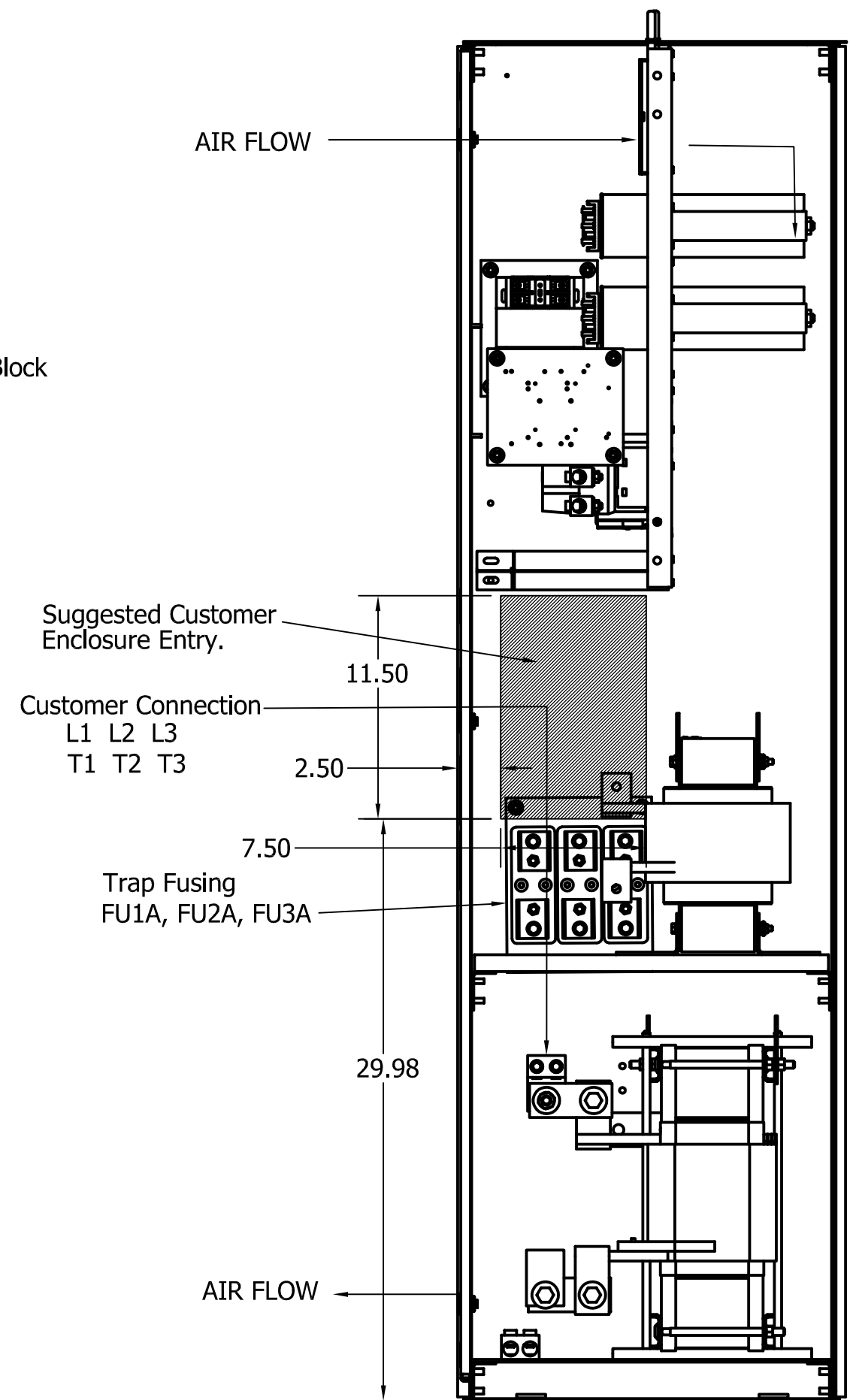
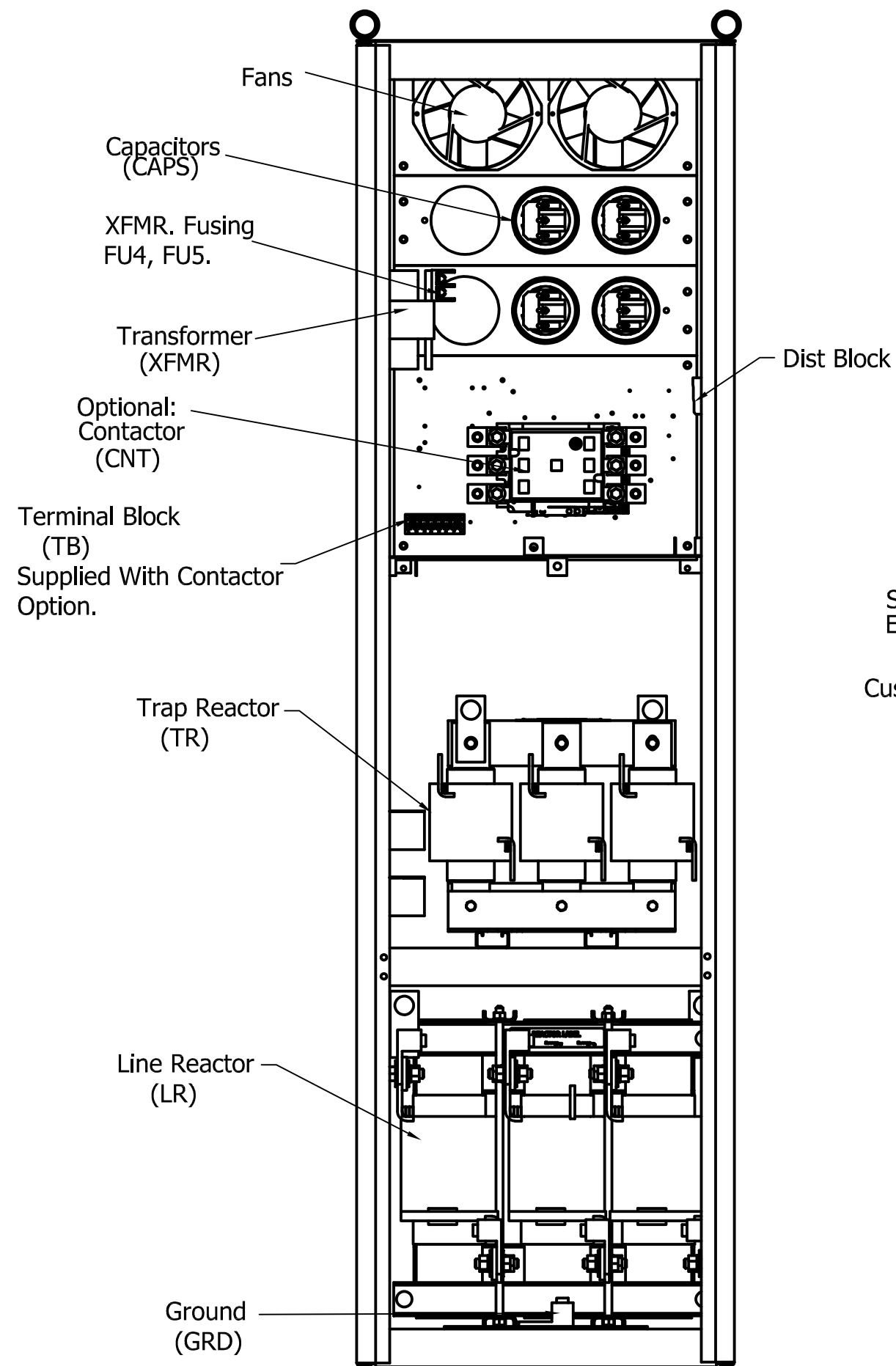
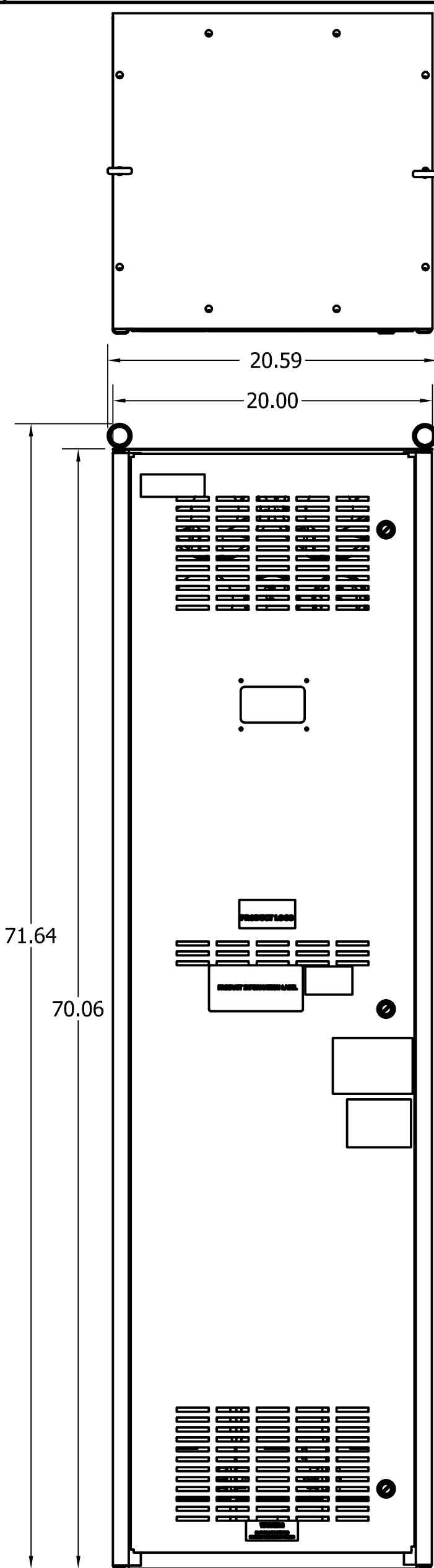


Unit Specifications					
kVar	Harmonic	Volt	HZ.	Phase	HP
60	5TH	600	60	3	400

TCI Part Number	Option	Weight	Schematic
HGL0400CW1S0000	Standard	645lbs	30807-S
HGL0400CW1C0000	Contactors	655lbs	30807-C

See IOM Manual For Wire Range  
And Tightening Torque.



CUSTOMER IS RESPONSIBLE FOR INSTALLATION  
TO MEET ALL NATIONAL AND LOCAL ELETRICAL CODES.

Material(s) Shall be RoHS Compliant

TCI, LLC CLAIMS PROPRIETARY RIGHTS IN THE MATERIAL HEREIN DISCLOSED. IT IS SUPPLIED WITHOUT PREDJUDICE TO ANY PATENT RIGHTS OF TCI AND MAY NOT BE REPRODUCED OR USED TO MANUFACTURE ANYTHING SHOWN THEREIN WITHOUT WRITTEN PERMISSION FROM TCI.

NO	REVISION	DATE	BY	TOLERANCES (EXCEPT AS NOTED)
				DECIMAL
				.XX +/- .25
				.XXX +/- .12
				FRACTIONAL
				+/- 1/16
				ANGULAR
				+/- 1°

**TCI** W132 N10611 GRANT DRIVE  
GERMANTOWN, WI 53022

HGL0400CW1C0000, 600V, 400HP, 3 Phase  
HGL0400CW1S0000, 600V, 400HP, 3 Phase  
60 Hz, Type 1, Low C, Passive Harmonic Filter

DRN. BY: DSW DATE: 10/9/17 DWG. No.: 107295DG  
SCALE: 1/8 APRVD. SHEET 1 OF 1

