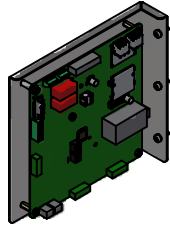


Unit Specifications					
kVar	Harmonic	Volt	HZ.	Phase	HP
30	5TH	600	60	3	200

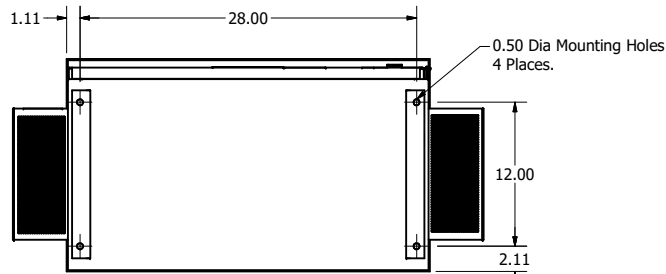
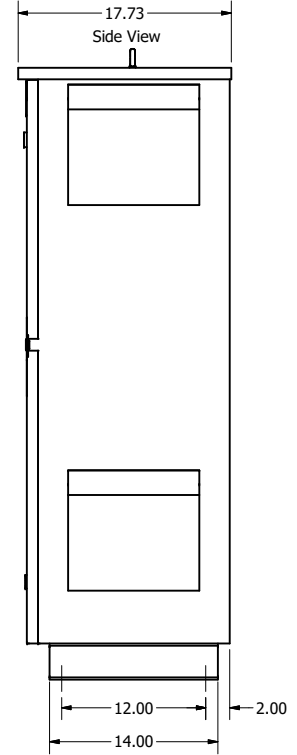
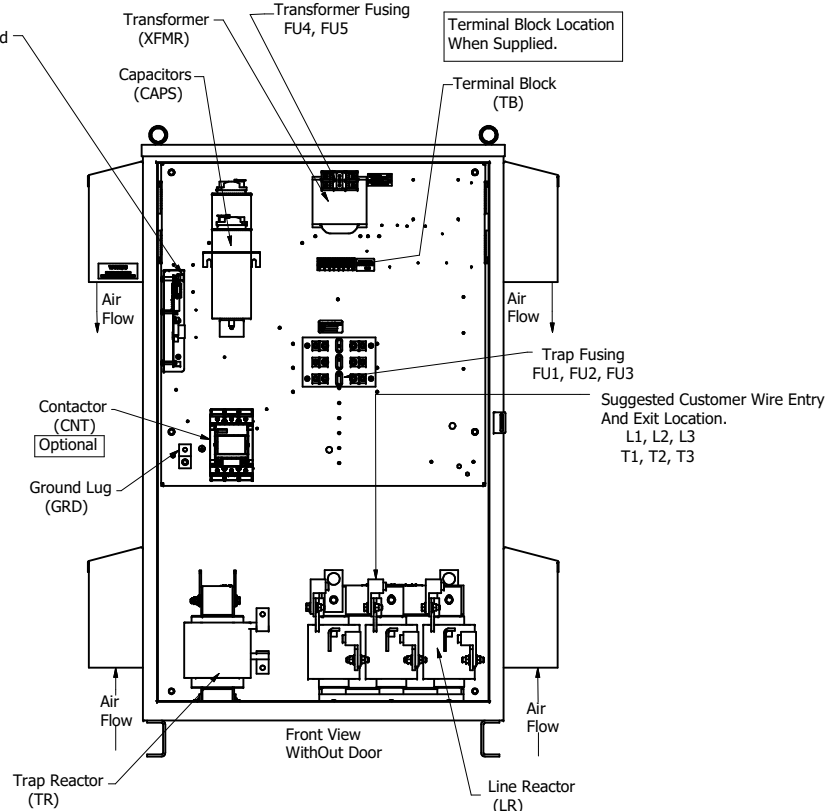
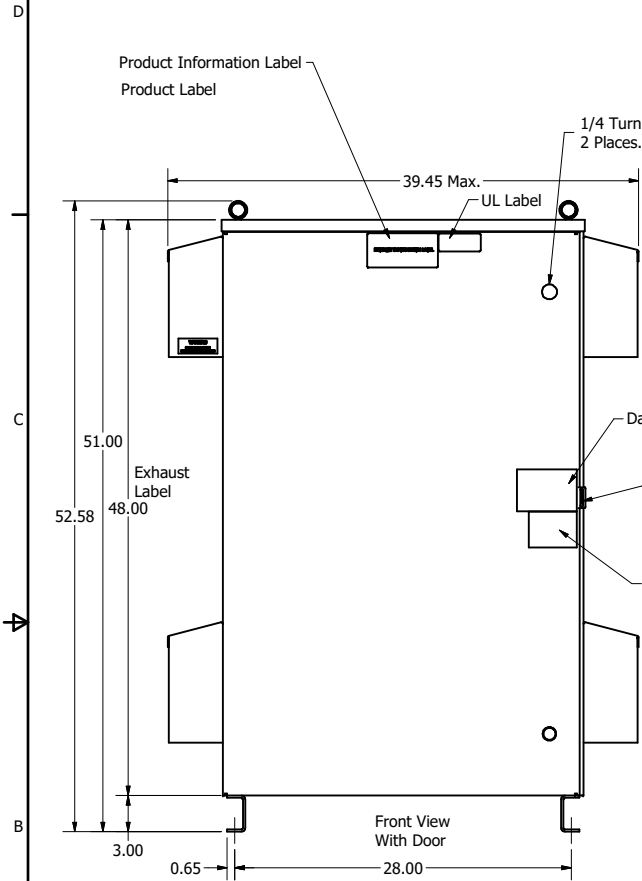


Note: For Torque Information See IOM Manual

Customer Connections.
L1, L2, L3, T1, T2, T3
Wire Range: 250kcmil to 6AWG.
250kcmil-2AWG: Torque: 375lbs-in
2AWG-6AWG: Torque: 275lbs-in

Ground Lug
Wire Range: 250kcmil to 6AWG.
250kcmil-2AWG: Torque: 375lbs-in
2AWG-6AWG: Torque: 275lbs-in

HGL Part Number	Schematic Drawing #	Approx Weight (LBS)
HGL0200CW3S0000	30807-S	465
HGL0200CW3C0000	30807-C	470
HGL0200CW3S1000	30807-PQ1	468
HGL0200CW3C1000	30807-PQ	473



HGL0200CW3-----				
Components	S0000	C0000	S1000	C1000
Line Reactor (LR)	x	x	X	X
Trap Reactor (TR)	x	x	X	X
Capacitor (Cap)	x	x	X	X
Trap Fusing, FU1, FU2, FU3	x	x	X	X
Contactor (CNT)		x		X
Transformer (XFMR)	x	x	X	X
XFMR Fusing, FU4, FU5	x	x	X	X
PQConnect Board			X	X

Customer Is Responsible For Installation to Meet All National And Local Electrical Codes.

NOTE: USE ONLY HUBS OR FITTINGS THAT COMPLY WITH UL514B FOR TYPE 3R ENCLOSURES

Material(s) Shall be RoHS Compliant

THE INFORMATION AND DESIGNS CONTAINED IN THIS DRAWING ARE CONFIDENTIAL AND THE PROPRIETARY PROPERTY OF ALLIED MOTION TECHNOLOGIES INC. AND ITS SUBSIDIARIES. NEITHER THIS DESIGN NOR ANY INFORMATION CONTAINED IN THIS DRAWING MAY BE REPRODUCED OR DISCLOSED TO OTHERS WITHOUT THE EXPRESS WRITTEN CONSENT OF ALLIED MOTION TECHNOLOGIES INC. AND ITS SUBSIDIARIES.

NO	REVISION	DATE	BY	SCALE
C	6274, Update PT Terminals	5/16/2023	DSW	FRACTIONAL
B	Add PQconnect	3/14/19	DSW	ANGULAR
NO				± 1°

TOLERANCES (EXCEPT AS NOTED)	
DECIMAL	.XX ± .25 .XXX ± .10
FRACTIONAL	± 1/32
ANGULAR	± 1°

TCL W132N10611 (Rev. 11/16) Germanhousen, WI 53022 © 2023 TCI, LLC
An Official Motion Components Company
HarmonicGuard Low Capacitance HGL_200HP_600/3/60_Type 3R
DESIGN BY: DSW DATE: 10/4/17 FILE: 107311DG
SCALE: 1/8 DRAWING NO: HGL_200HP_600/3/60_Type 3R SHEET 1 OF 1