

HGL Open Part Number	Schematic Drawing #	Approx Weight (LBS)
HGL0050CW0S0000	30807-S	131
HGL0050CW0C0000	30807-C	136
HGL0050CW0S1000	30807-PQ4	132
HGL0050CW0C1000	30807-PQ5	137

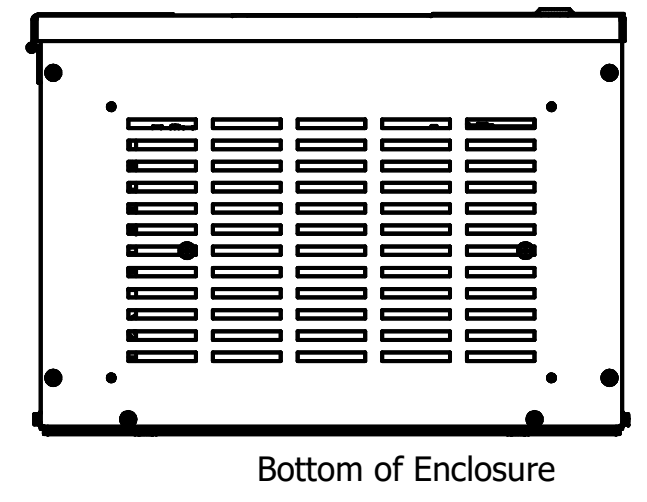
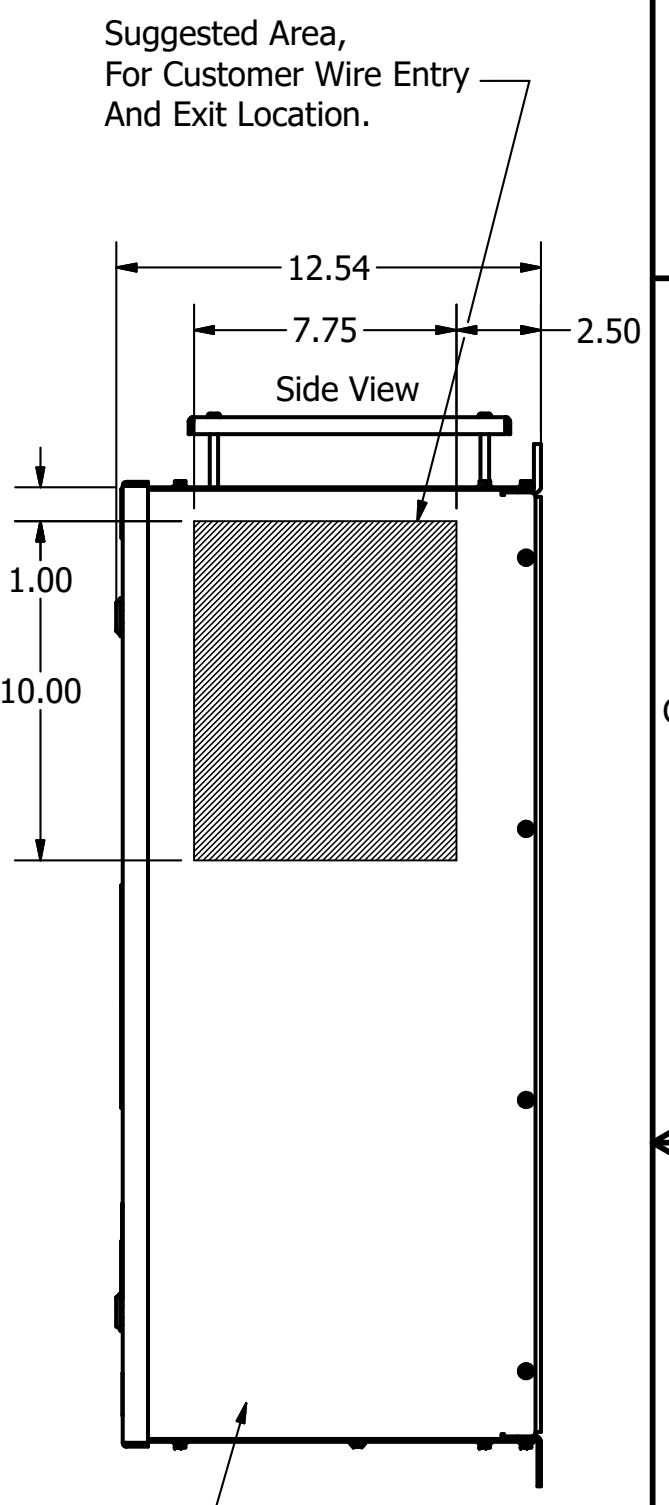
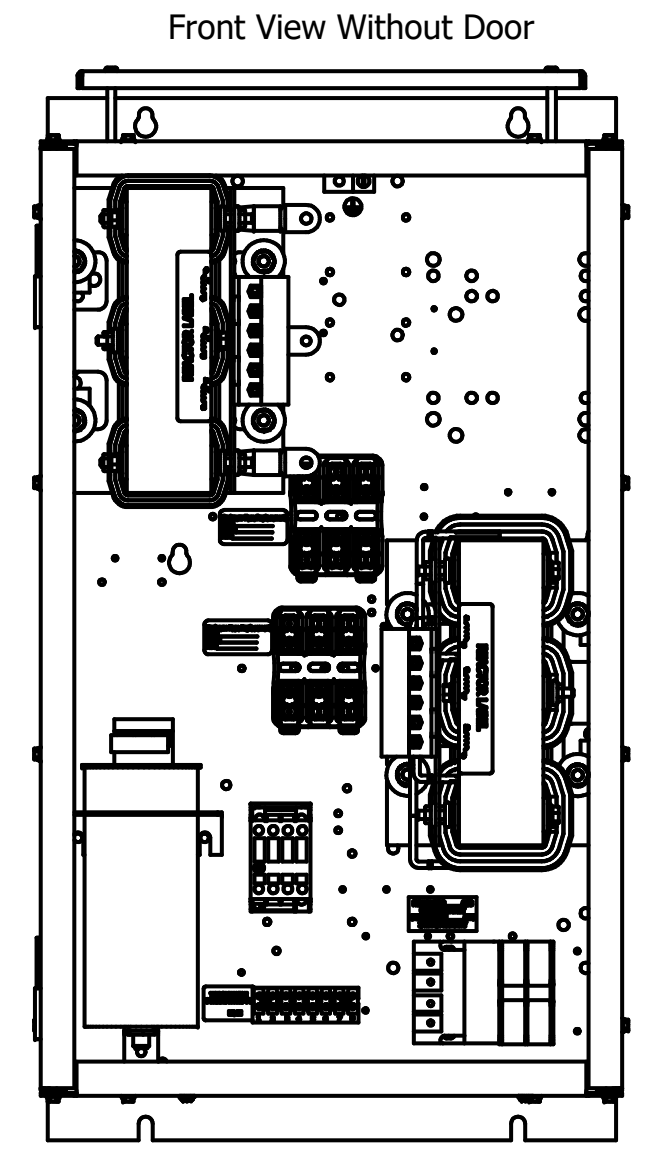
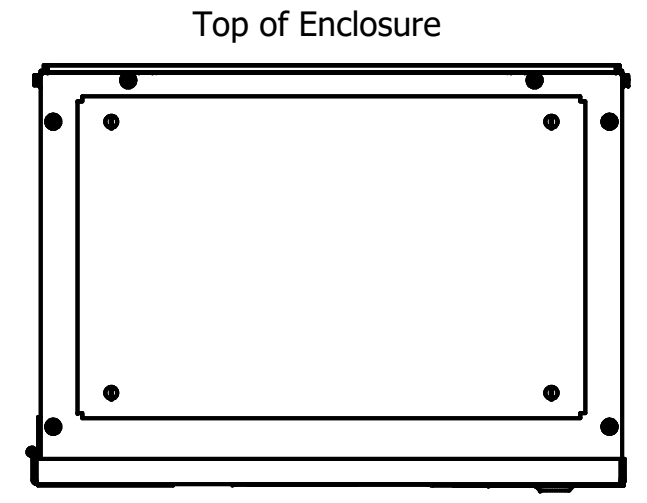
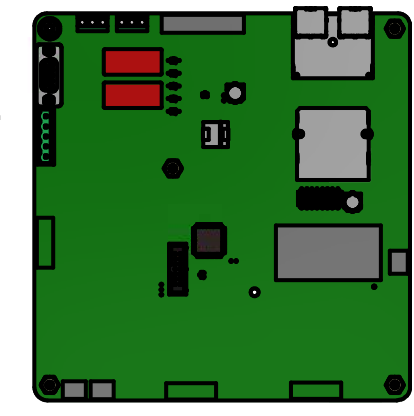
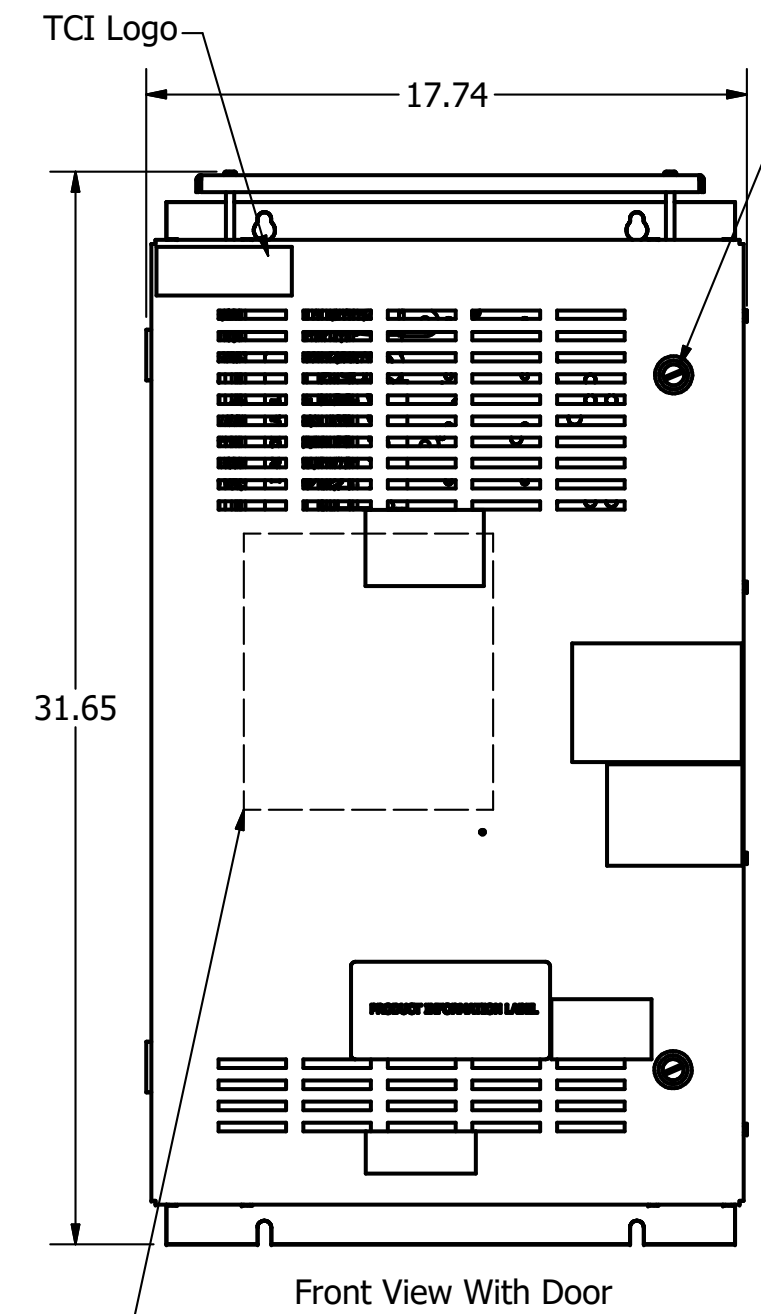
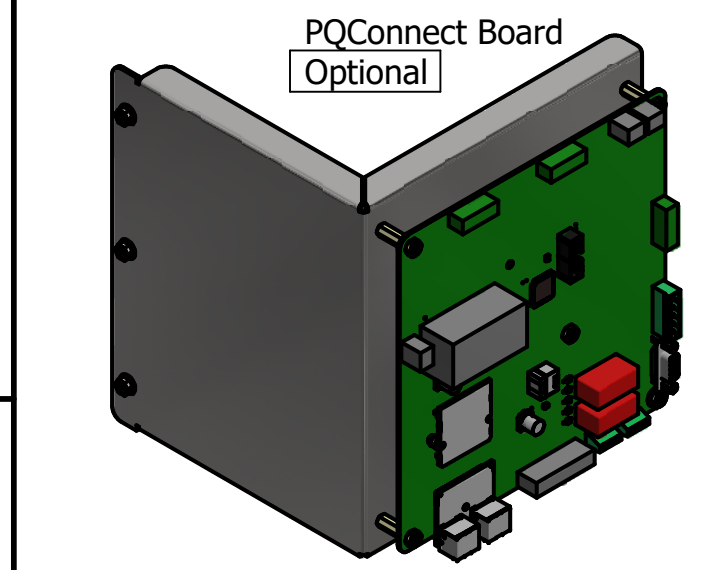
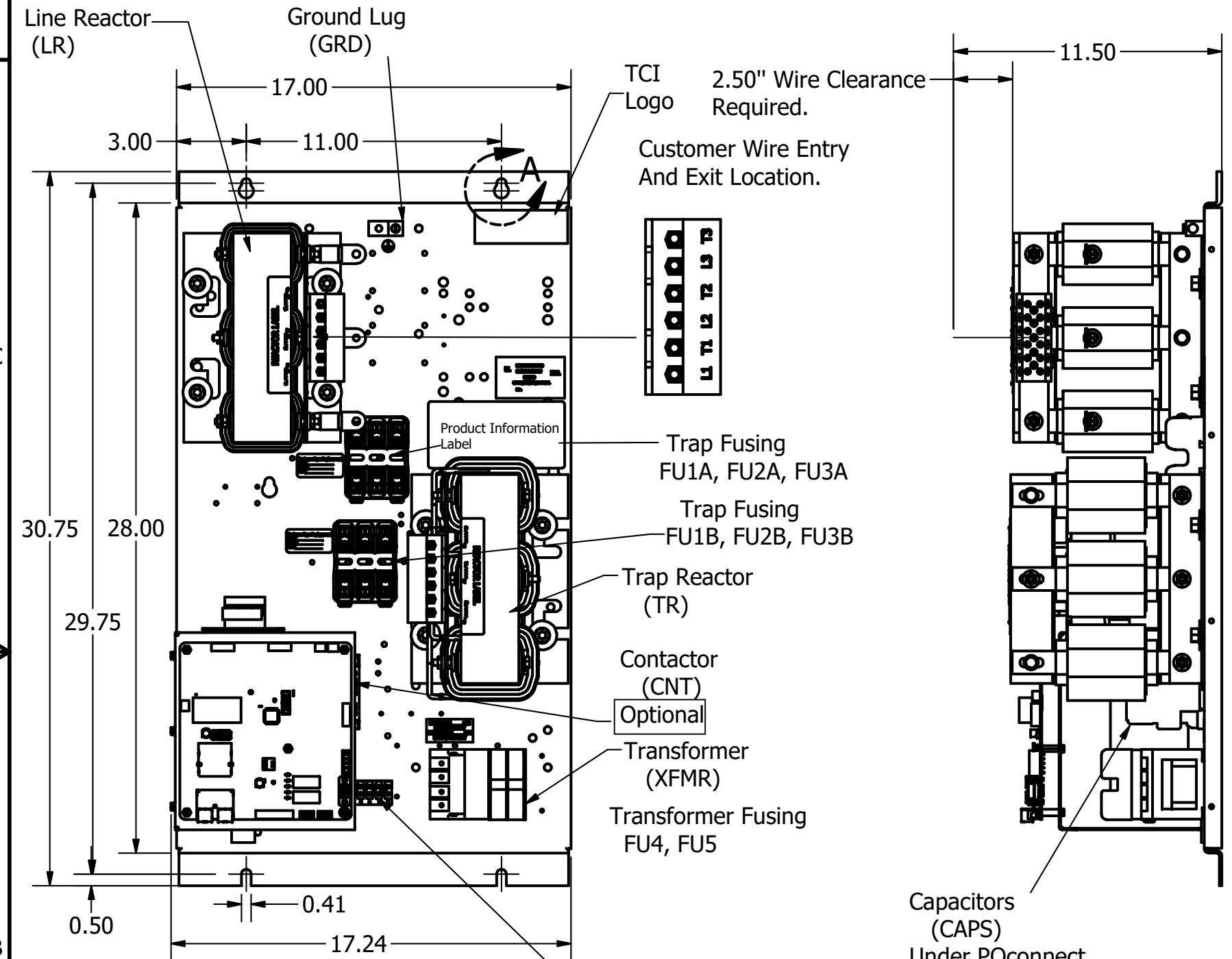
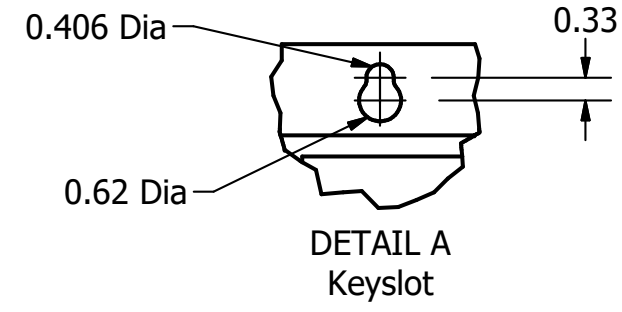
Unit Specifications					
kVar	Harmonic	Volt	HZ.	Phase	HP
8.3	5TH	600	60	3	50

HGL Enclosed Type1 Part Number	Schematic Drawing #	Approx Weight (LBS)
HGL0050CW1S0000	30807-S	195
HGL0050CW1C0000	30807-C	200
HGL0050CW1S1000	30807-PQ4	196
HGL0050CW1C1000	30807-PQ5	201

Note: For Torque Information
See IOM Manual

Customer Connections.
L1, T1, L2, T2, L3, T3
Wire Range: 1 AWG to 22 AWG.

Ground Lug
Wire Range: 1/0 to 14 AWG.



Note: Customer is responsible for proper cooling of filter components on open panels.
Capacitors Maximum Ambient 50°C.

Components	HGL0050CW----			
	0S0000/1S0000	0C0000/1C0000	0S1000/1S1000	0C1000/1C1000
Line Reactor (LR)	X	X	X	X
Trap Reactor (TR)	X	X	X	X
Capacitor (Cap)	X	X	X	X
Trap Fusing, FU1, FU2, FU3	X	X	X	X
Contactor (CNT)		X		X
Transformer (XFMR)		X	X	X
XFMR Fusing, FU4, FU5		X	X	X
PQConnect Board			X	X

Customer Is Responsible For Installation to Meet All National And Local Electrical Codes.

Material(s) Shall be RoHS Compliant

TCI, LLC CLAIMS PROPRIETARY RIGHTS IN THE MATERIAL HEREIN DISCLOSED. IT IS SUPPLIED WITHOUT PREJUDICE TO ANY PATENT RIGHTS OF TCI AND MAY NOT BE REPRODUCED OR USED TO MANUFACTURE ANYTHING SHOWN THEREIN WITHOUT WRITTEN PERMISSION FROM TCI.	DRN BY	DATE	SCALE	W132 N10611 Grant Drive Germantown, WI 53022 HarmonicGuard Low Capacitance HGL, 50HP, 600/3/60, Open and Type 1. 107285DG SHT 1 OF 1
	B	3/28/19	1/8	
	NO			
	REVISION	DATE	BY	