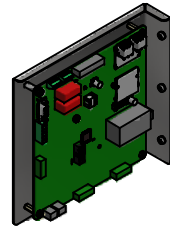


| Unit Specifications |          |      |     |       |    |
|---------------------|----------|------|-----|-------|----|
| kVar                | Harmonic | Volt | HZ. | Phase | HP |
| 6                   | 5TH      | 600  | 60  | 3     | 40 |

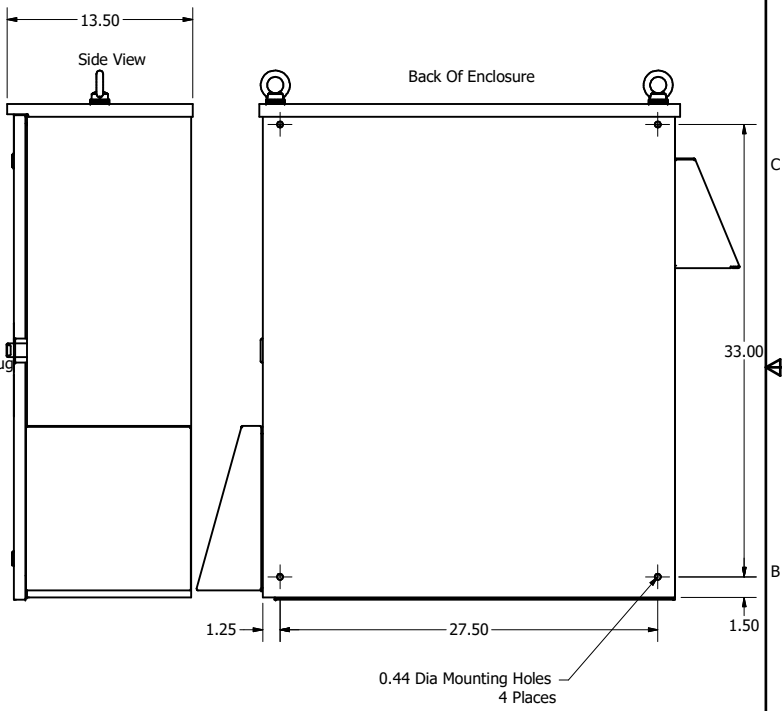
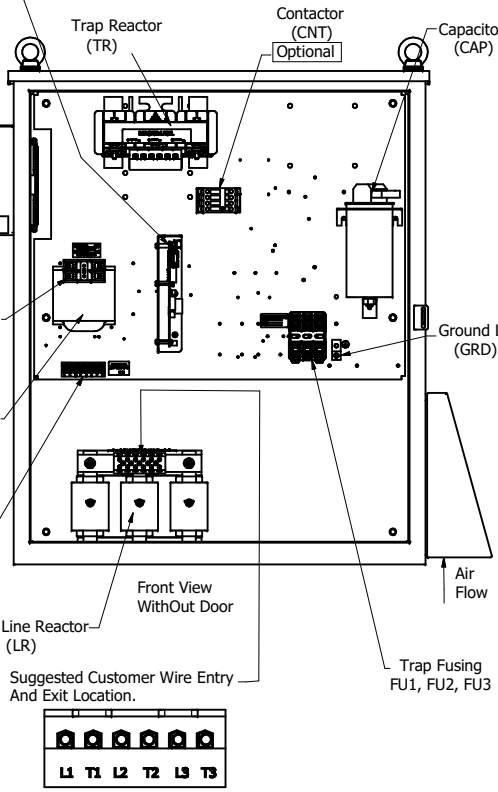
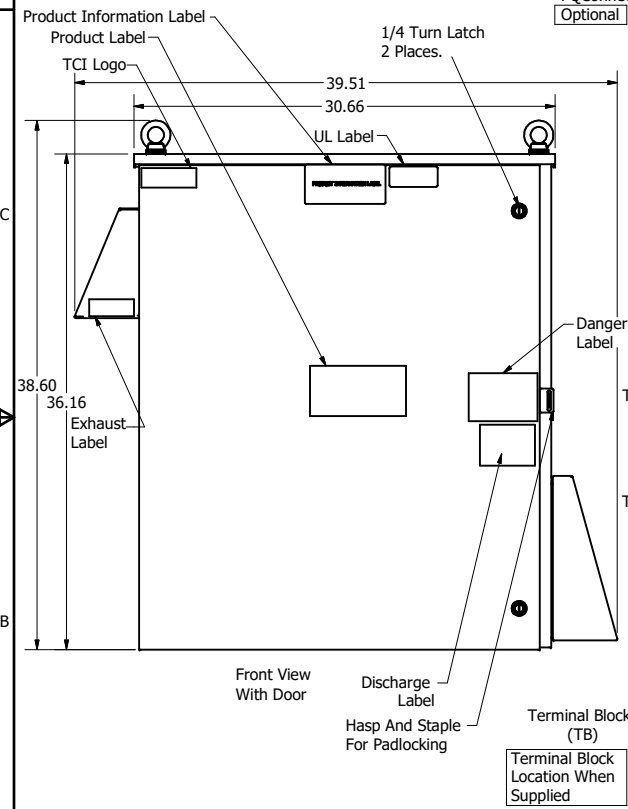
| HGL Part Number | Schematic Drawing # | Approx Weight (LBS) |
|-----------------|---------------------|---------------------|
| HGL0040CW3S0000 | 30807-1             | 231                 |
| HGL0040CW3C0000 | 30807               | 235                 |
| HGL0040CW3S1000 | 30807-PQ1           | 234                 |
| HGL0040CW3C1000 | 30807-PQ            | 238                 |



Note: For Torque Information See IOM Manual

Customer Connections.  
L1, T1, L2, T2, L3, T3  
Wire Range: 1 AWG to 22 AWG.

Ground Lug  
Wire Range: 1/0 to 14 AWG.



| Components                 | HGL0040CW3----- |       |       |       |
|----------------------------|-----------------|-------|-------|-------|
|                            | S0000           | C0000 | S1000 | C1000 |
| Line Reactor (LR)          | x               | x     | X     | X     |
| Trap Reactor (TR)          | x               | x     | X     | X     |
| Capacitor (Cap)            | x               | x     | X     | X     |
| Trap Fusing, FU1, FU2, FU3 | x               | x     | X     | X     |
| Contactor (CNT)            |                 | x     |       | X     |
| Transformer (XFMR)         | x               | x     | X     | X     |
| XFMR Fusing, FU4, FU5      | x               | x     | X     | X     |
| PQConnect Board            |                 |       | X     | X     |

NOTE: USE ONLY HUBS OR FITTINGS THAT COMPLY WITH UL514B FOR TYPE 3R ENCLOSURES

Customer Is Responsible For Installation to Meet All National And Local Electrical Codes.

Material(s) Shall be RoHS Compliant

|  |    |                       |          |     |  |  |
|--|----|-----------------------|----------|-----|--|--|
| TCI, LLC CLAIMS PROPRIETARY RIGHTS IN THE MATERIAL HEREIN DISCLOSED. IT IS SUPPLIED WITHOUT PREJUDICE TO ANY PATENT RIGHTS OF TCI AND MAY NOT BE REPRODUCED OR USED TO MANUFACTURE ANYTHING SHOWN THEREIN WITHOUT WRITTEN PERMISSION FROM TCI. |    |                       |          |     | TOLERANCES (EXCEPT AS NOTED)<br>DECIMAL<br>.XX ± .25<br>.XXX ± .10             | W132 N10611 Grant Drive<br>Germantown, WI 53022<br>HarmonicGuard Low Capacitance<br>HGL, 40HP, 600/3/60, Type 3R |
|  | C  | 5265 Update Enclosure | 8/4/2020 | DSW | FRACTIONAL<br>± 1/16   |  |
|  | B  | Add PQConnect         | 3/12/19  | DSW | ANGULAR<br>± 1°  |  |
|  | NO | REVISION              | DATE     | BY  |  |  |
|  |    |                       |          |     | DRN BY: DSW DATE: 10/4/17<br>SCALE: 1/8 DRAWN: HGL<br>107304DG<br>SHEET 1 OF 1 |  |