

HGL Open Part Number	Schematic Drawing #	Approx Weight (LBS)
HGL0040CW0S0000	30807-1	102
HGL0040CW0C0000	30807	106
HGL0040CW0S1000	30807-PQ1	103
HGL0040CW0C1000	30807-PQ	107

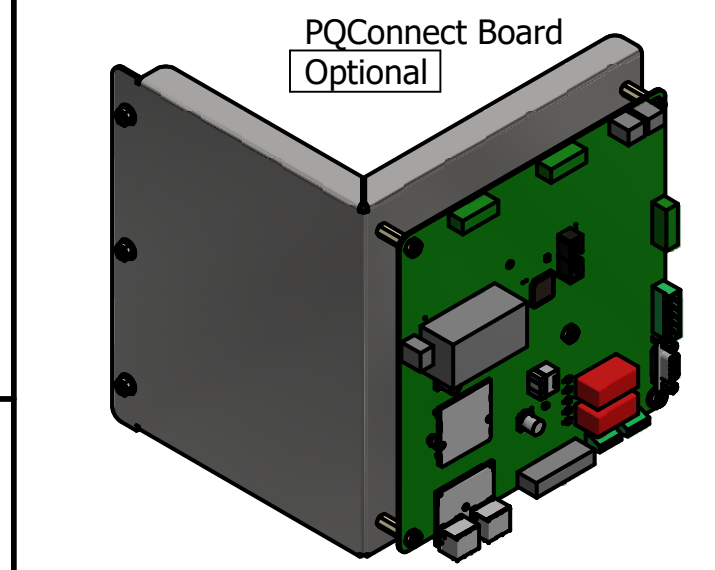
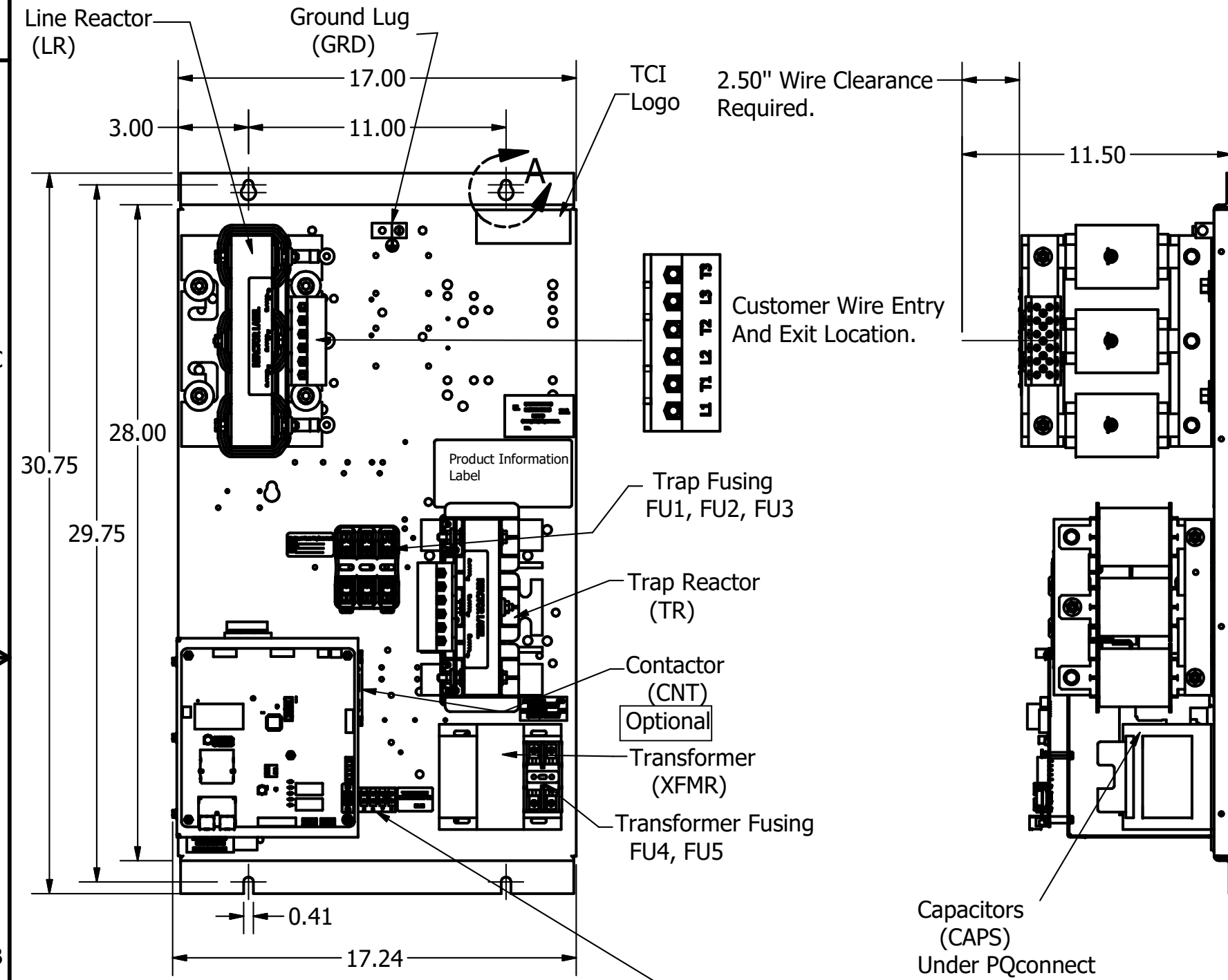
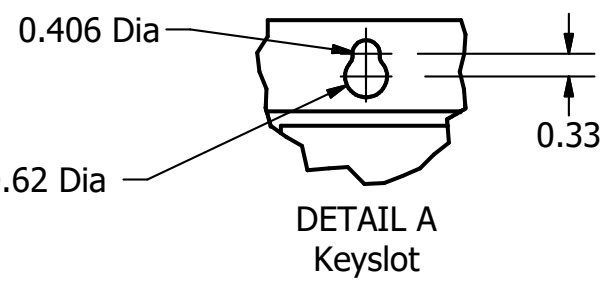
Unit Specifications						
kVar	Harmonic	Volt	HZ.	Phase	HP	
6	5TH	600	60	3	40	

HGL Enclosed Type1 Part Number	Schematic Drawing #	Approx Weight (LBS)
HGL0040CW1S0000	30807-1	181
HGL0040CW1C0000	30807	185
HGL0040CW1S1000	30807-PQ1	182
HGL0040CW1C1000	30807-PQ	186

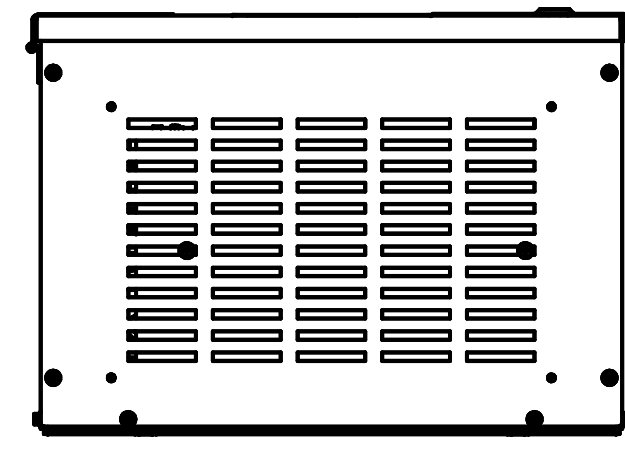
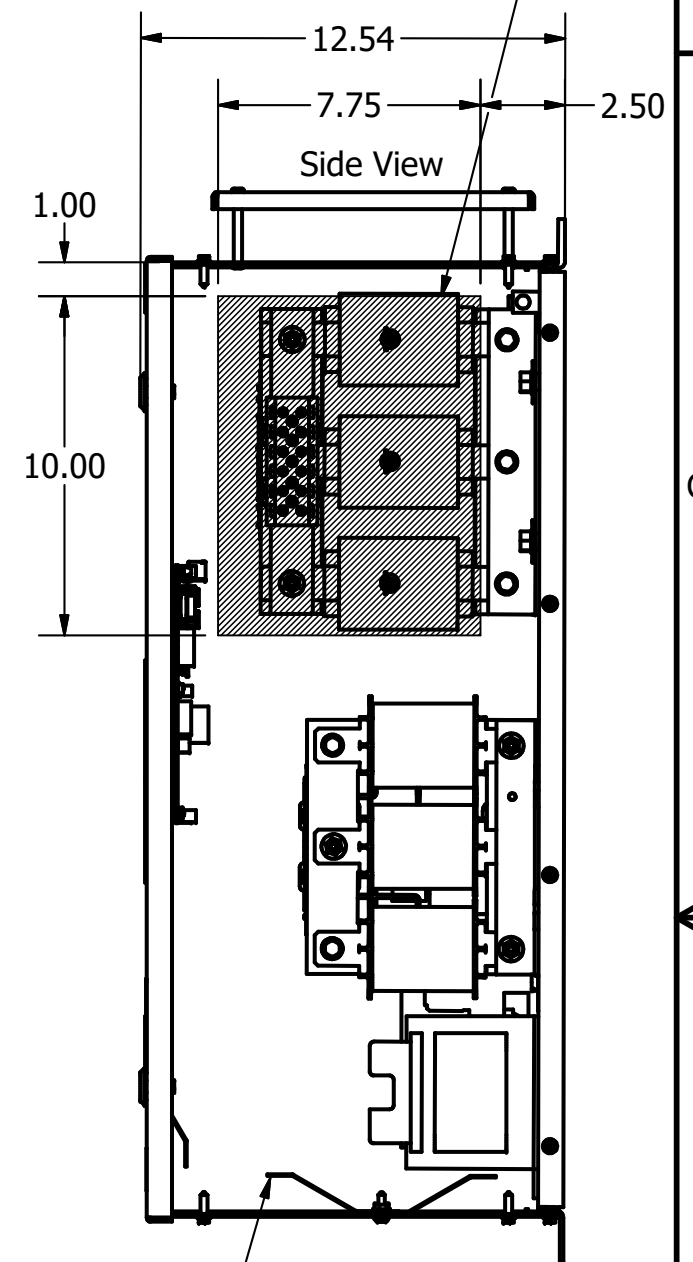
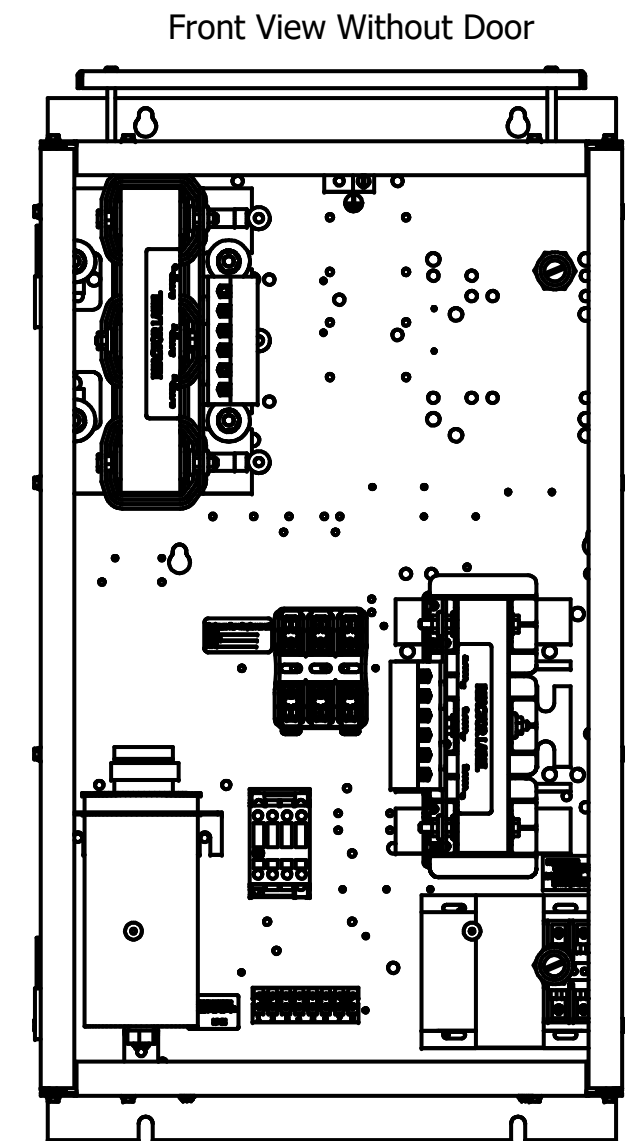
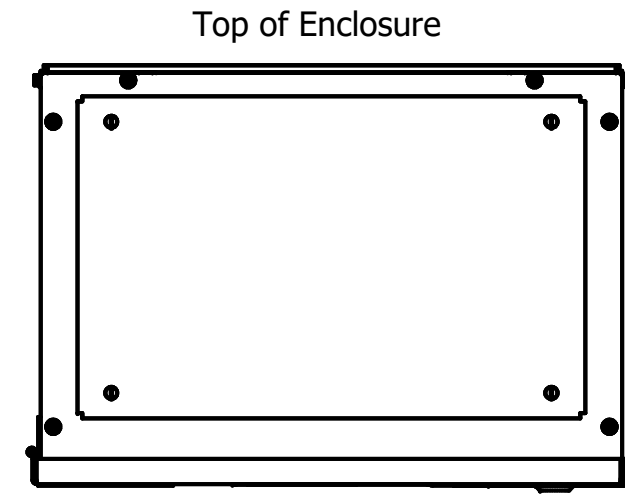
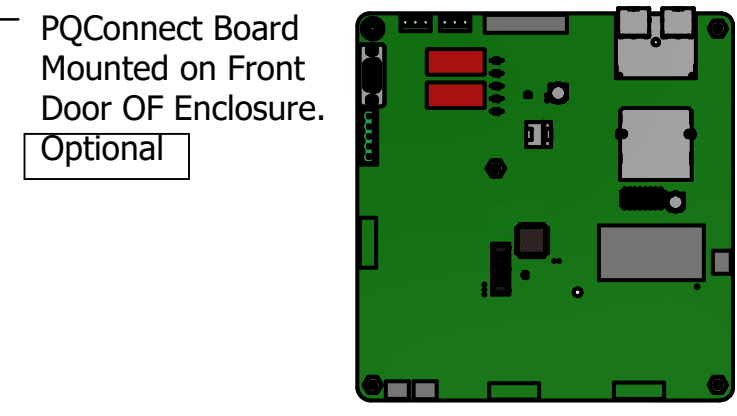
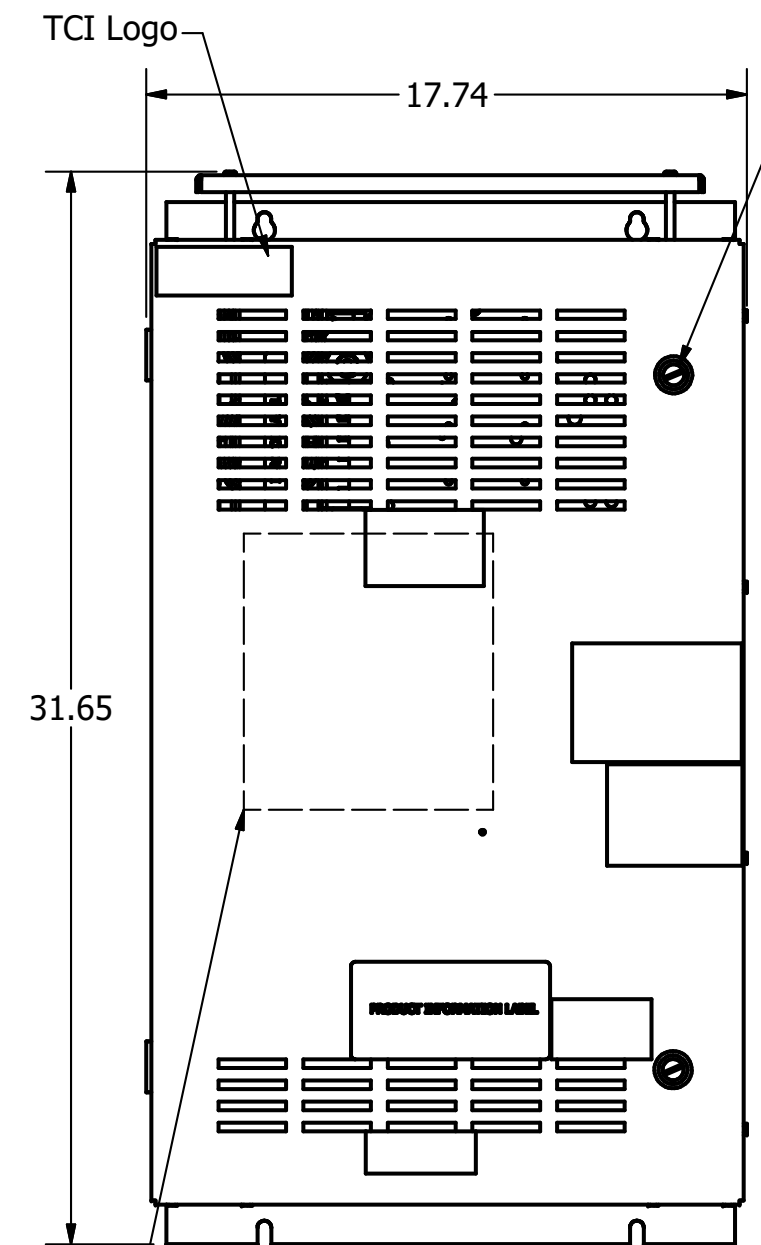
Note: For Torque Information
See IOM Manual

Customer Connections.
L1, T1, L2, T2, L3, T3
Wire Range: 1 AWG to 22 AWG.

Ground Lug
Wire Range: 1/0 to 14 AWG.



Terminal Block (TB)
Location Of Terminal Block, When Supplied



Note: Customer is responsible for proper cooling of filter components on open panels.
Capacitors Maximum Ambient 50°C.

Components	HGL0040CW----			
	0S0000/1S0000	0C0000/1C0000	0S1000/1S1000	0C1000/1C1000
Line Reactor (LR)	X	X	X	X
Trap Reactor (TR)	X	X	X	X
Capacitor (Cap)	X	X	X	X
Trap Fusing, FU1, FU2, FU3	X	X	X	X
Contactor (CNT)		X		X
Transformer (XFMR)		X	X	X
XFMR Fusing, FU4, FU5		X	X	X
PQConnect Board			X	X

Customer Is Responsible For Installation to Meet All National And Local Electrical Codes.

Material(s) Shall be RoHS Compliant

TCI, LLC CLAIMS PROPRIETARY RIGHTS IN THE MATERIAL HEREIN DISCLOSED. IT IS SUPPLIED WITHOUT PREJUDICE TO ANY PATENT RIGHTS OF TCI AND MAY NOT BE REPRODUCED OR USED TO MANUFACTURE ANYTHING SHOWN THEREIN WITHOUT WRITTEN PERMISSION FROM TCI.	TOLERANCES (EXCEPT AS NOTED)		W132 N10611 Grant Drive Germantown, WI 53022 HarmonicGuard Low Capacitance HGL, 40HP, 600/3/60, Open and Type 1.
	DECIMAL		
	.XX ± .25 .XXX ± .10		
	FRACTIONAL ± 1/16		
B	PQConnect Board Added.	3/28/19	DSW
NO	REVISION	DATE	BY
SCALE: 1/8"			ANGULAR ± 1°
DRN BY: DSW		DATE: 10/5/17	107284DG
SCALE: 1/8"		APRVD:	SIZE C
			SHT 1 OF 1