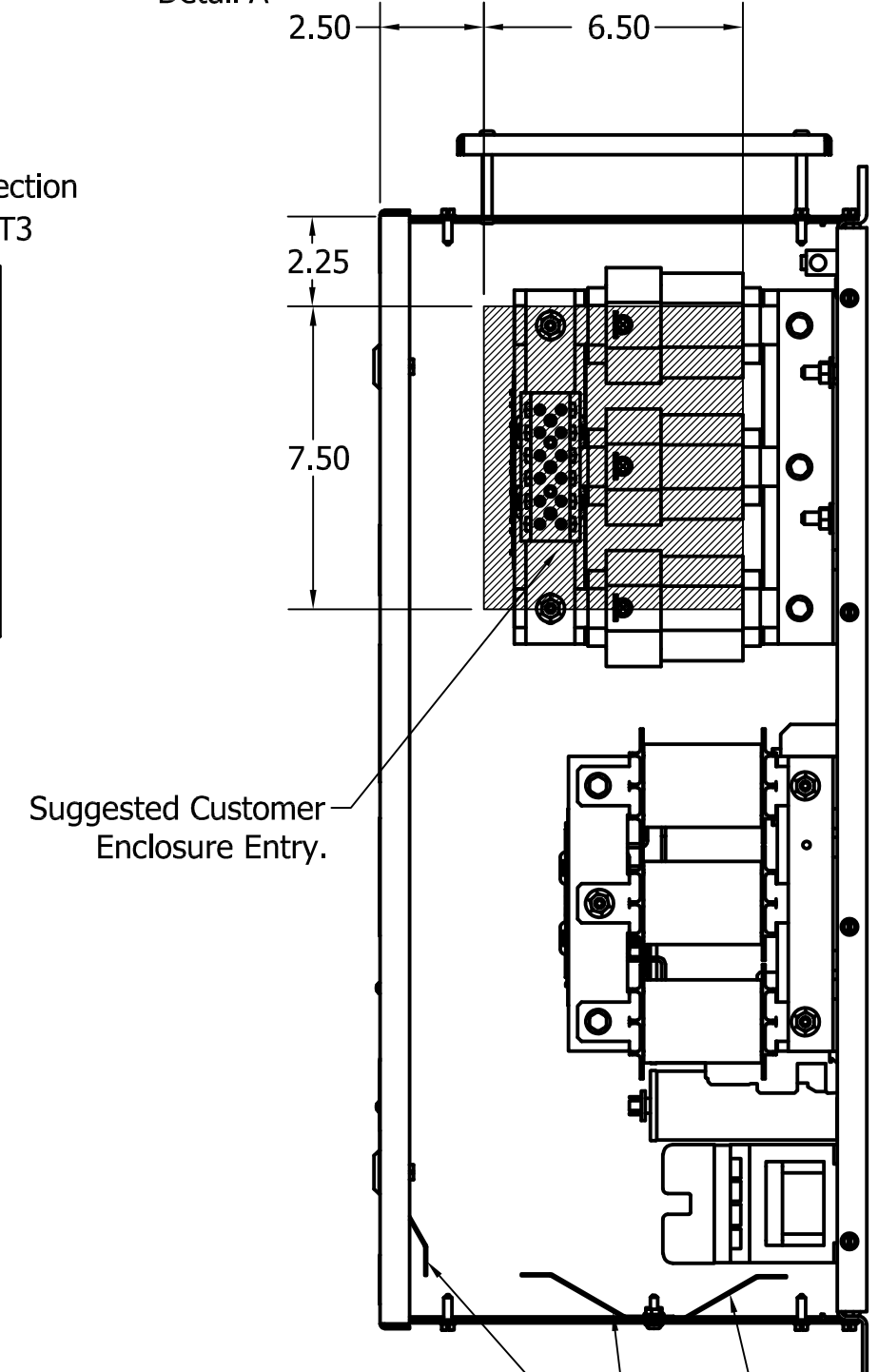
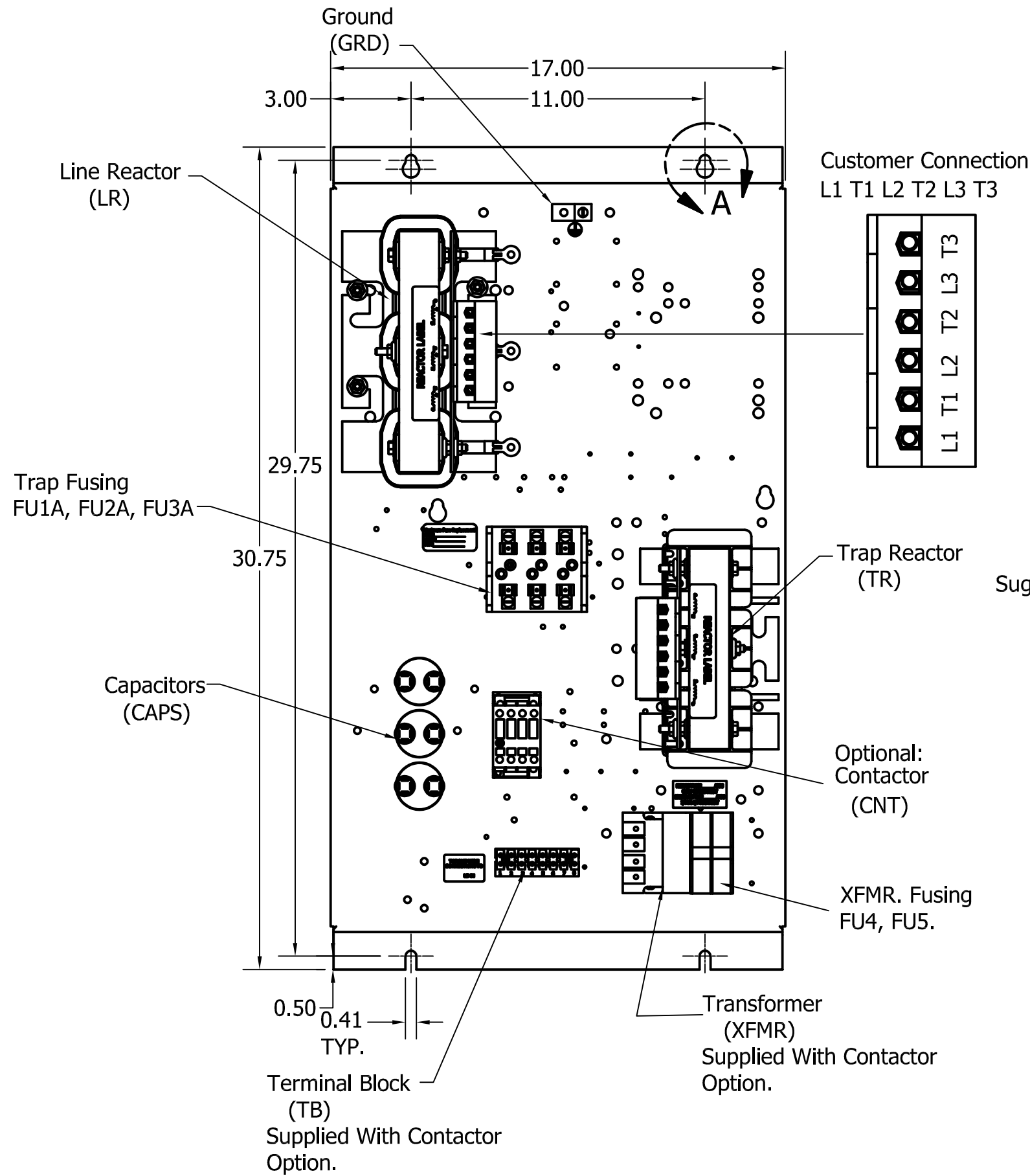
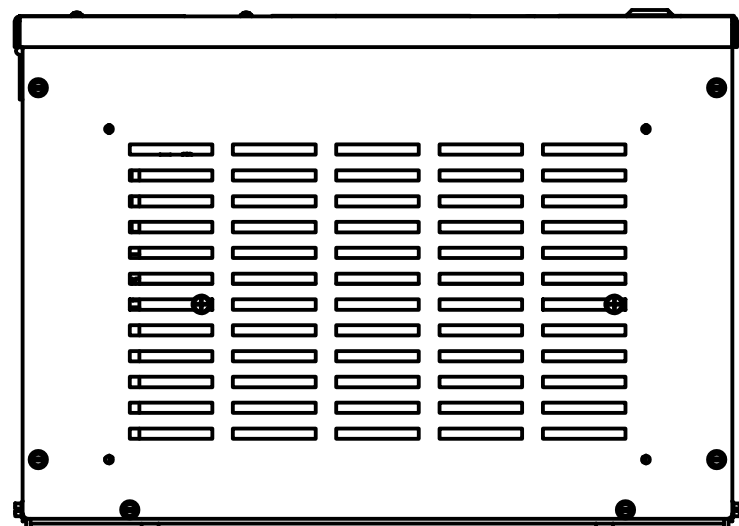
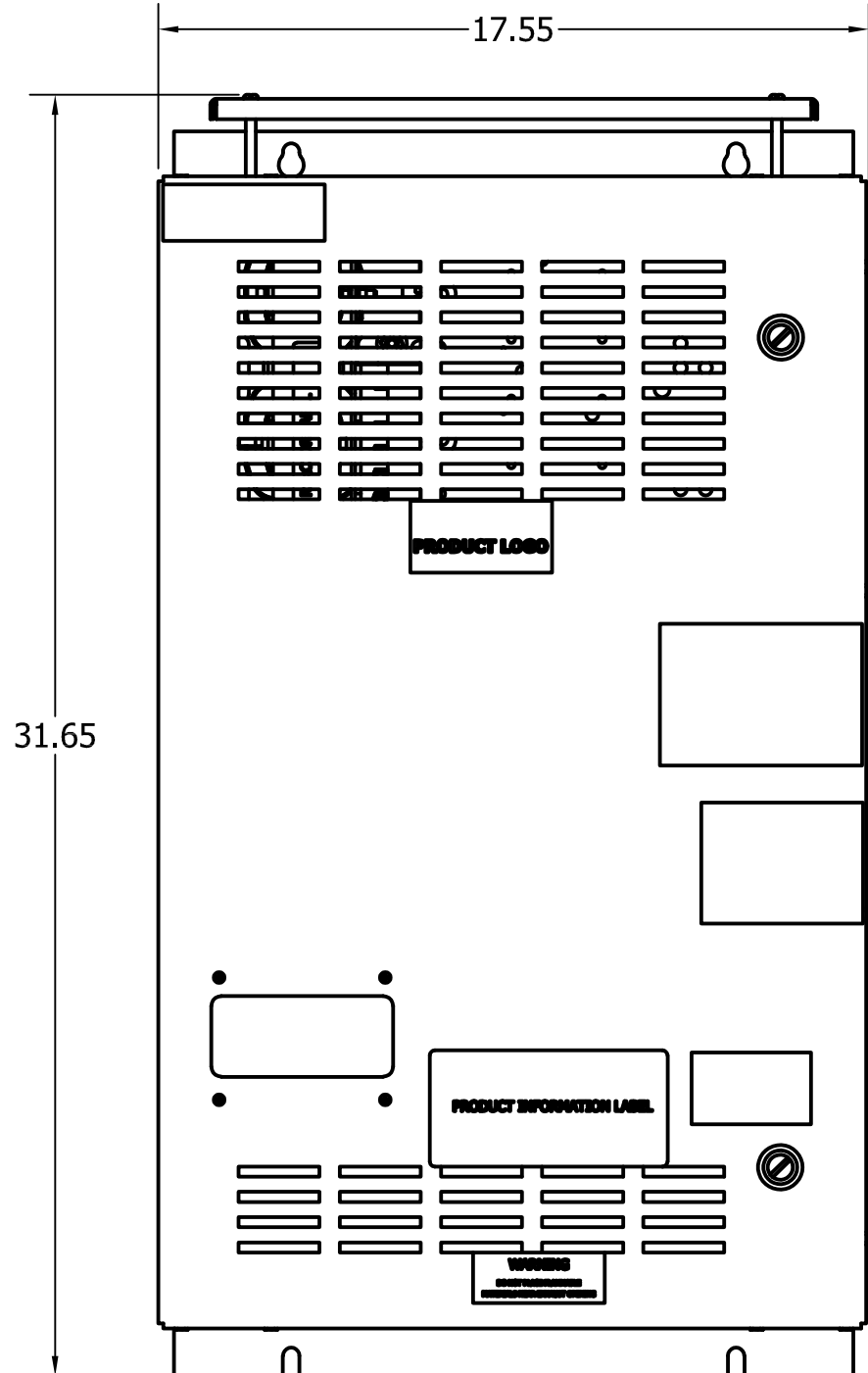
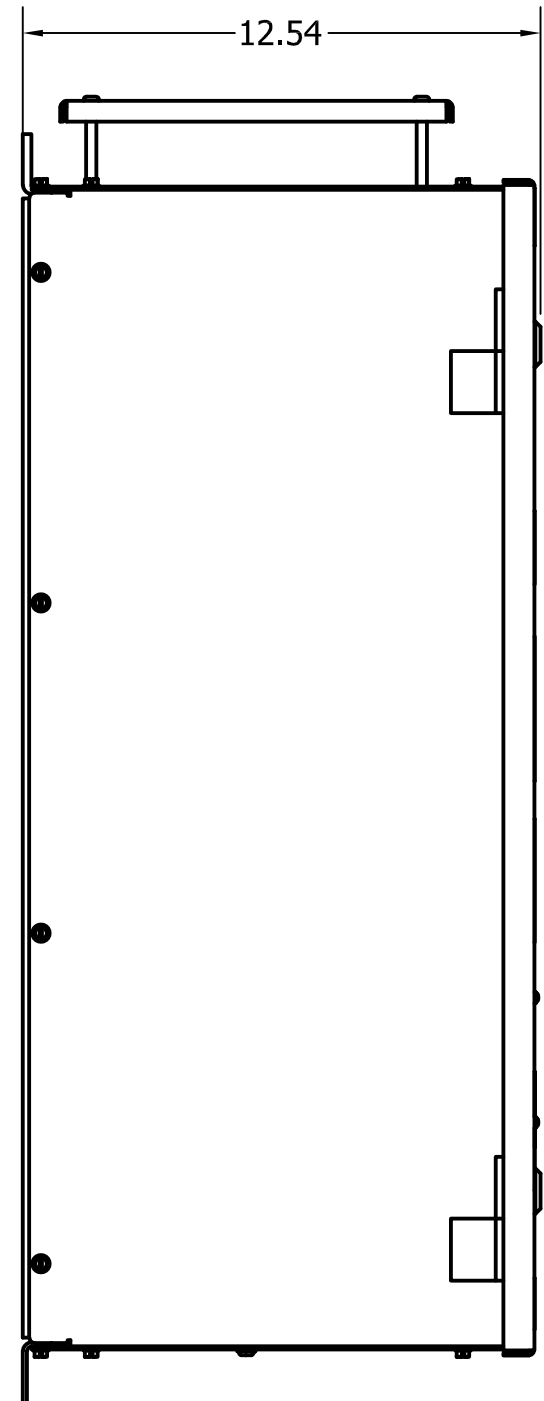
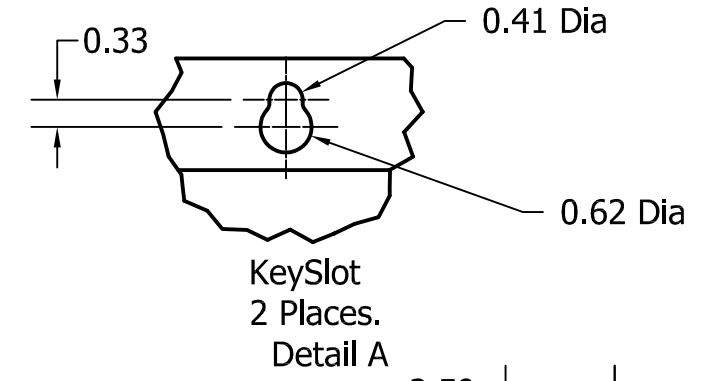


Unit Specifications					
kVar	Harmonic	Volt	HZ.	Phase	HP
4.1	5TH	600	60	3	25

TCI Part Number	Option	Weight	Schematic
HGL0025CW1S0000	Standard	163lbs	30807-2
HGL0025CW1C0000	Contactor	167lbs	30807-2C

See IOM Manual For Wire Range
And Tightening Torque.



Note: UL Shields Not Needed On Standard Version

CUSTOMER IS RESPONSIBLE FOR INSTALLATION TO MEET ALL NATIONAL AND LOCAL ELECTRICAL CODES.
Material(s) Shall be RoHS Compliant

TCI, LLC CLAIMS PROPRIETARY RIGHTS IN THE MATERIAL HEREIN DISCLOSED. IT IS SUPPLIED WITHOUT PREDJUDICE TO ANY PATENT RIGHTS OF TCI AND MAY NOT BE REPRODUCED OR USED TO MANUFACTURE ANYTHING SHOWN THEREIN WITHOUT WRITTEN PERMISSION FROM TCI.

NO	REVISION	DATE	BY	TOLERANCES (EXCEPT AS NOTED)
A	AS DESIGNED	10/5/17	DSW	DECIMAL .XX +/- .25 .XXX +/- .12
				FRACTIONAL +/- 1/16
				ANGULAR +/- 1°

		W132 N10611 GRANT DRIVE GERMANTOWN, WI 53022	
HGL0025CW1C0000, 600V, 25HP, 3 Phase HGL0025CW1S0000, 600V, 25HP, 3 Phase 60 Hz, Type 1, Low C, Passive Harmonic Filter			
DRN. BY DSW	DATE 10/5/17	DWG. No. 107328DG	
SCALE 1/8	APRVD.	SHEET 1 OF 1	