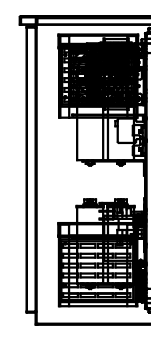
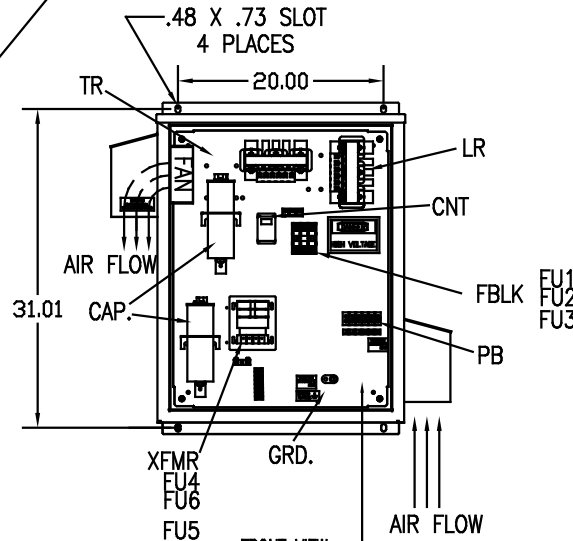
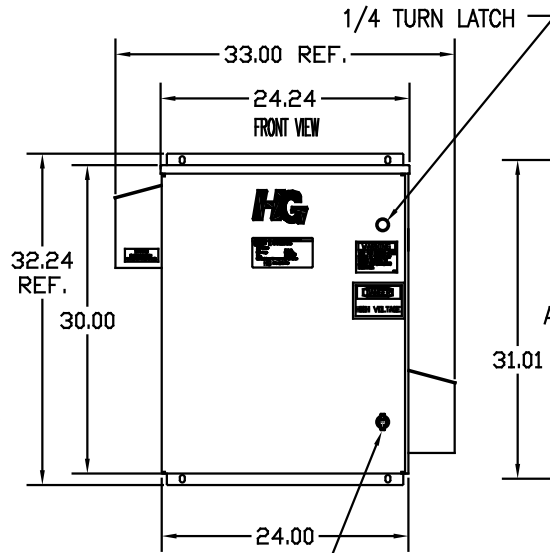
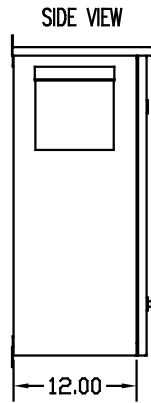
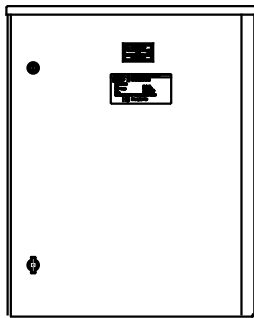
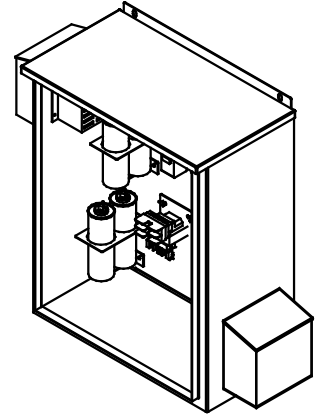
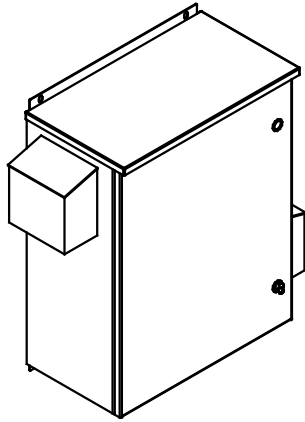


SEE DWG# 26899 FOR SCHEMATIC

CUSTOMER IS RESPONSIBLE FOR INSTALLATION
TO MEET ALL NATIONAL AND LOCAL ELECTRICAL CODES.

NOTE: USE ONLY HUBS OR FITTINGS THAT COMPLY
WITH UL514B FOR TYPE 3R ENCLOSURES.



INSIDE VIEW
OF DOOR

SIDE VIEW

1/4 TURN LATCH

33.00 REF.

24.24
FRONT VIEW

32.24
REF.

30.00

24.00

PADLOCKABLE
WING NUT

.48 X .73 SLOT
4 PLACES

20.00

TR

AIR FLOW

31.01

XFMR
FU4
FU6
FU5

GRD.

LR

CNT

FBK

FU1
FU2
FU3

PB

AIR FLOW

FRONT VIEW
WITHOUT DOOR

L1 L2 L3 T1 T2 T3

SUGGESTED CUSTOMER WIRE ENTRY
AND EXIT LOCATION

UNIT SPECIFICATIONS:

KVAR	HARMONIC	VOLT	HZ	PHASE	HP
3	5TH	240	60	3	7.5
ENCLOSURE		UL TYPE 3R			
COLOR		WHITE			
FEATURES		CONTACTOR			
APPROX.WT. LBS.		128			

SYMBOL	TCI PART NUMBER
LR	KDRC21T
TR	KTR3B65HG
CAP. (3 KVAR)	KCAP3A6A
XFMR.	23896
Fu1, 2, 3	15752
Fu4,6	14106
Fu5	17567
CNT	26739

PB-POWER INPUT BLOCK:
WIRE RANGE-#18 TO #4 AWG.
TIGHTENING TORQUE 20 IN.-LB.

GROUND LUG:
WIRE RANGE-1/0 TO #14 AWG.
TIGHTENING TORQUE 200 IN.-LB.

NO	REVISION	DATE	BY	TOLERANCES EXCEPT AS NOTED	SCALE	DATE	BY	DATE	BY	SCALE
				DECIMAL XX ±.12 .XXX±.06 FRACTIONAL ± 1/32 ANGULAR ± 1/2°	TO FIT	12/22/08	DSW	12/22/08	DSW	TO FIT

TCI 7878 N. 86th STREET
MILWAUKEE, WI 53224

HG8BW03STC, 7.5HP
240/3/60 UL TYPE 3R

103709DG
SHT.1 OF 1