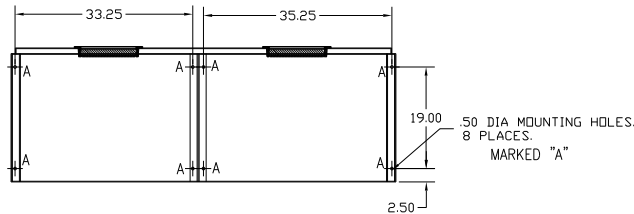
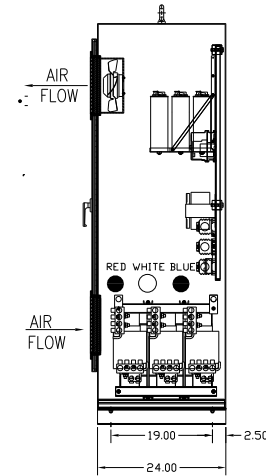
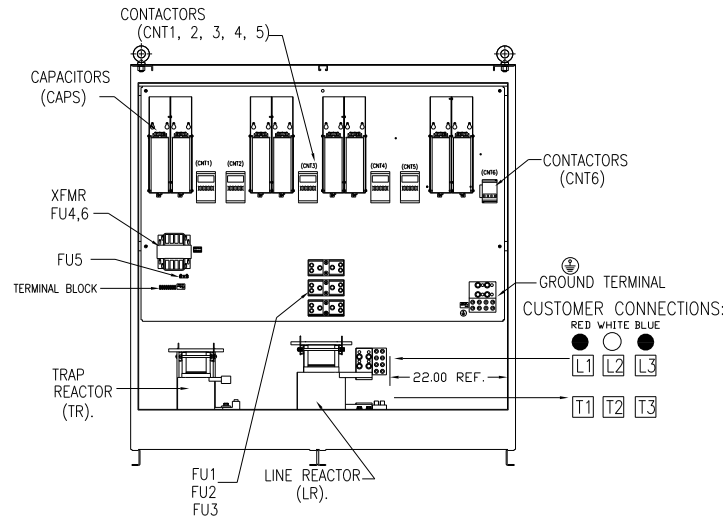
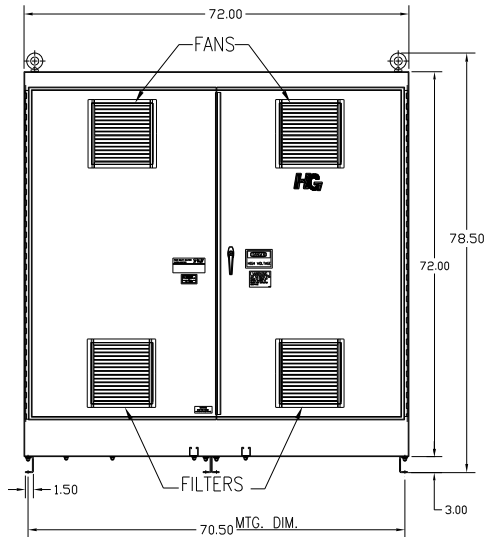
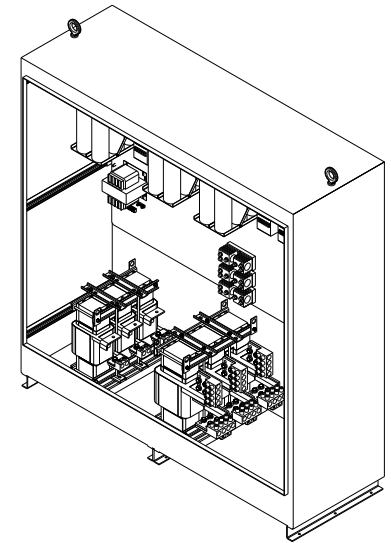
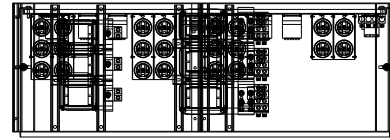


# HG630LW01STC

UNIT SPECIFICATIONS:					
KW	HARMONIC	VOLT	HZ	PHASE	FLA
630	5TH	400	50	3	1130
ENCLOSURE		NEMA 1			
APPROX.WT. LBS.		1760			

FOR SCHEMATIC SEE DWG# 27703-1



SYMBOL	TCI PART NUMBER
LR	KDRY34T
TR	KTR256L55HG
CAP1-20 (20 KVAR)	KCAP20A6B
XFMR.	24879
Fu1, 2, 3	13330
Fu4,6	26122
Fu5	13167
CNT1, 2, 3, 4, 5	19246
CNT6	22980

CUSTOMER IS RESPONSIBLE FOR INSTALLATION TO MEET ALL NATIONAL AND LOCAL ELECTRICAL CODES.

CUSTOMER CONNECTIONS:  
WIRE RANGE-FOUR 600MCM-2 AWG.  
TIGHTENING TORQUE 500 IN-LB.

GROUND LUG:  
WIRE RANGE-FOUR 600MCM-2 AWG.  
TIGHTENING TORQUE 500 IN-LB.

NO	REVISION	DATE	BY	TOLERANCES (EXCEPT AS NOTED)
A	AS BUILT	4/01/11	DSW	DECIMAL XX ± .03 XXX ± .01
				FRACTIONAL ± 1/32
				ANGULAR ± 1/2°

**TCI** 7878 N. 86th STREET  
MILWAUKEE, WI 53224

TCI, HG7 Standard, 630kW  
400/3/50, Type1, CNT.

DRN BY: DSW DATE: 4/1/2011 DWG NO: 104677DG  
SCALE: -- APPRVD: B SH.1 OF 1