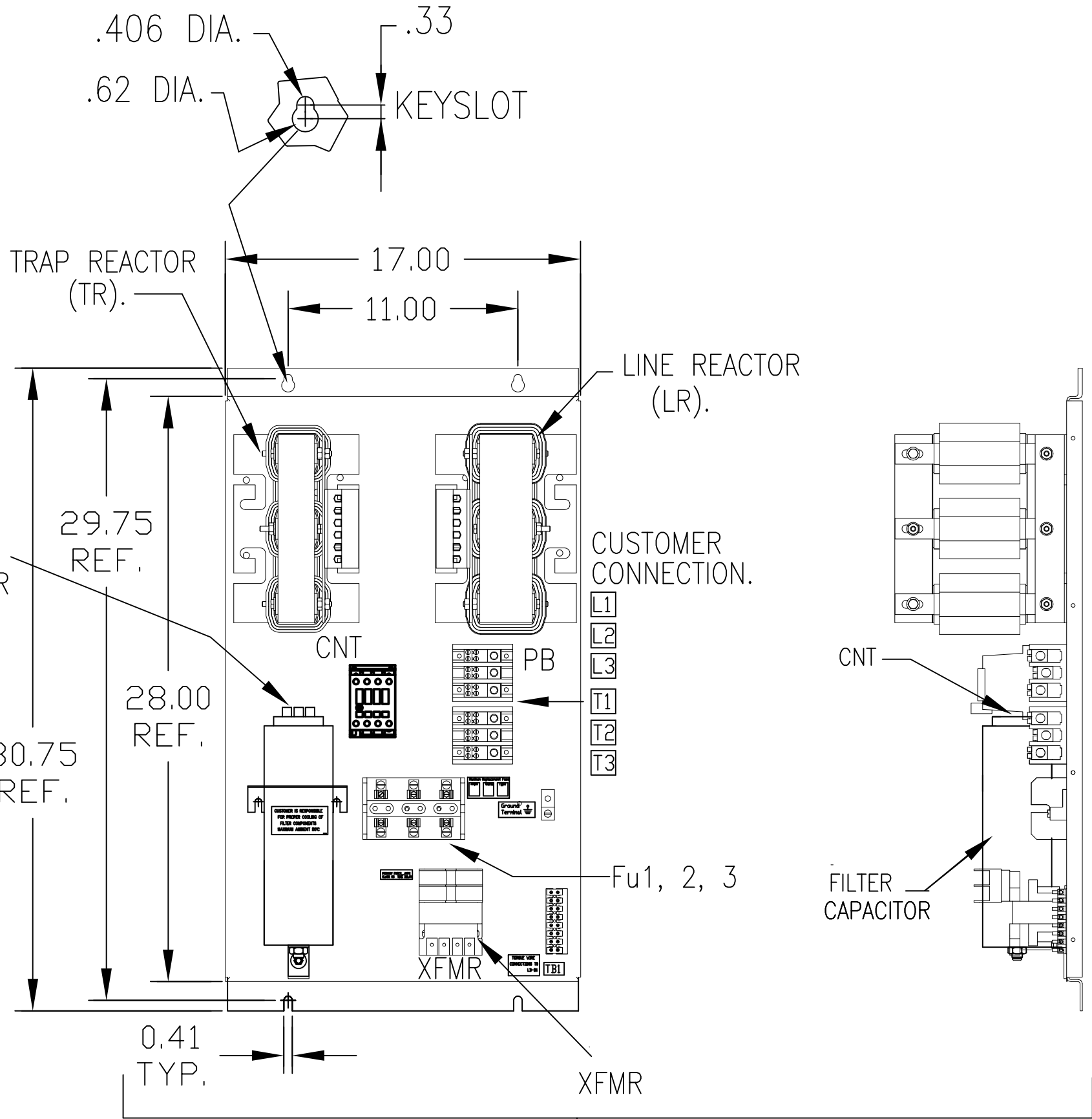
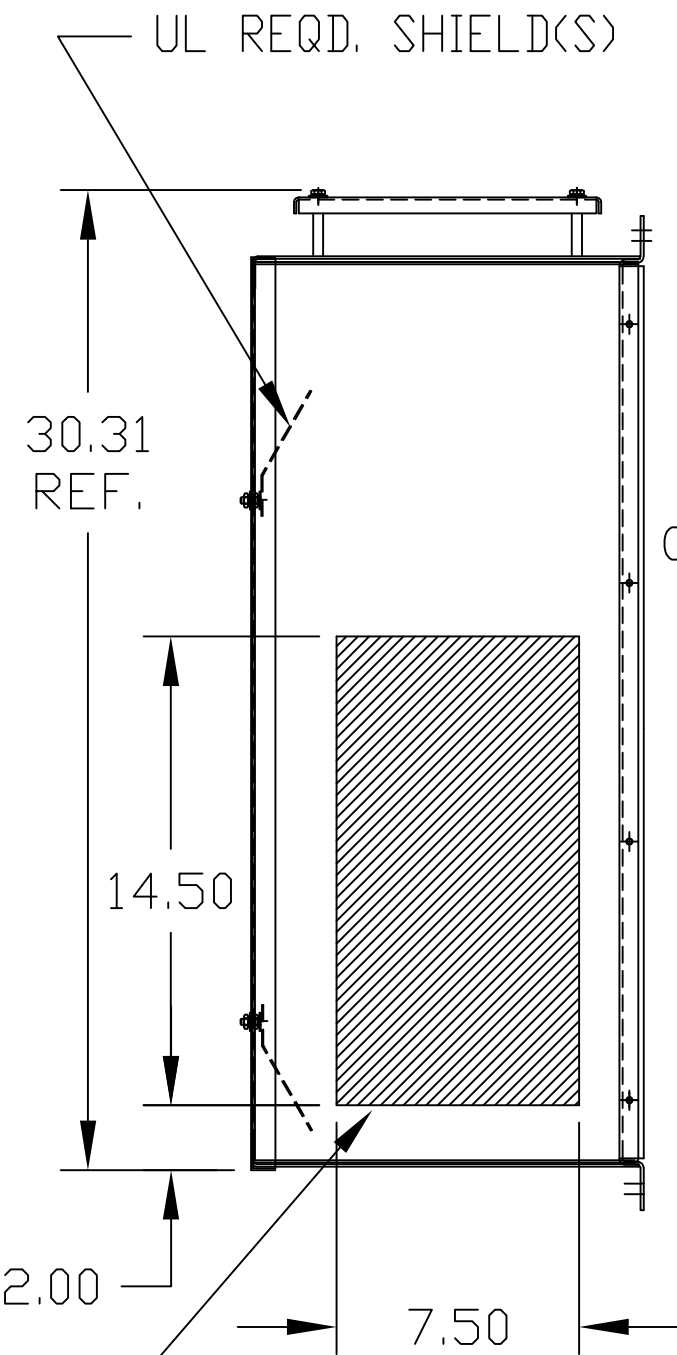
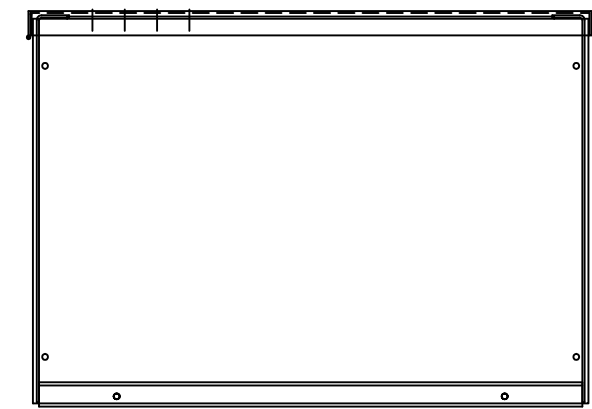
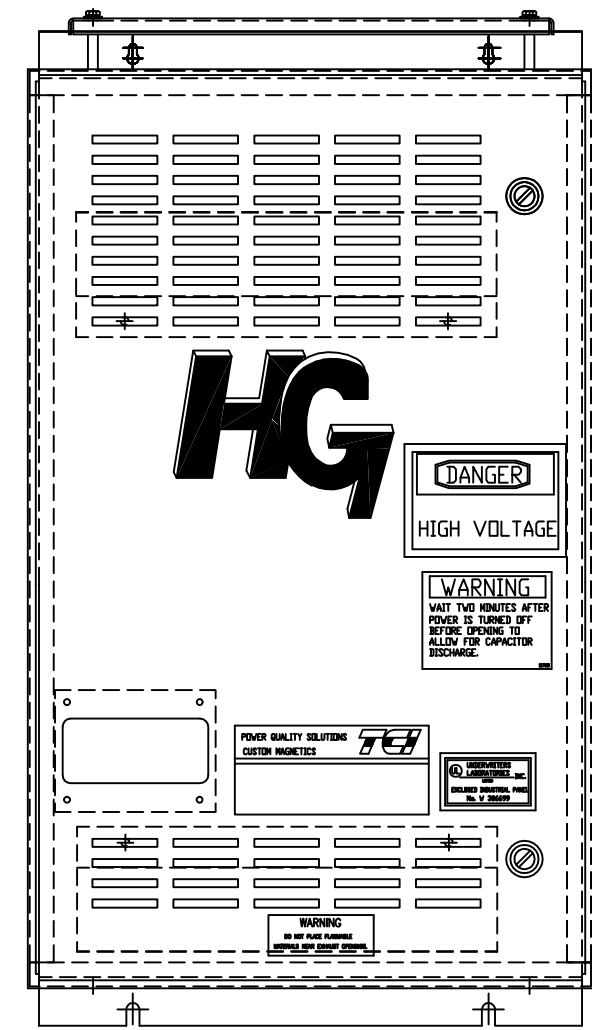
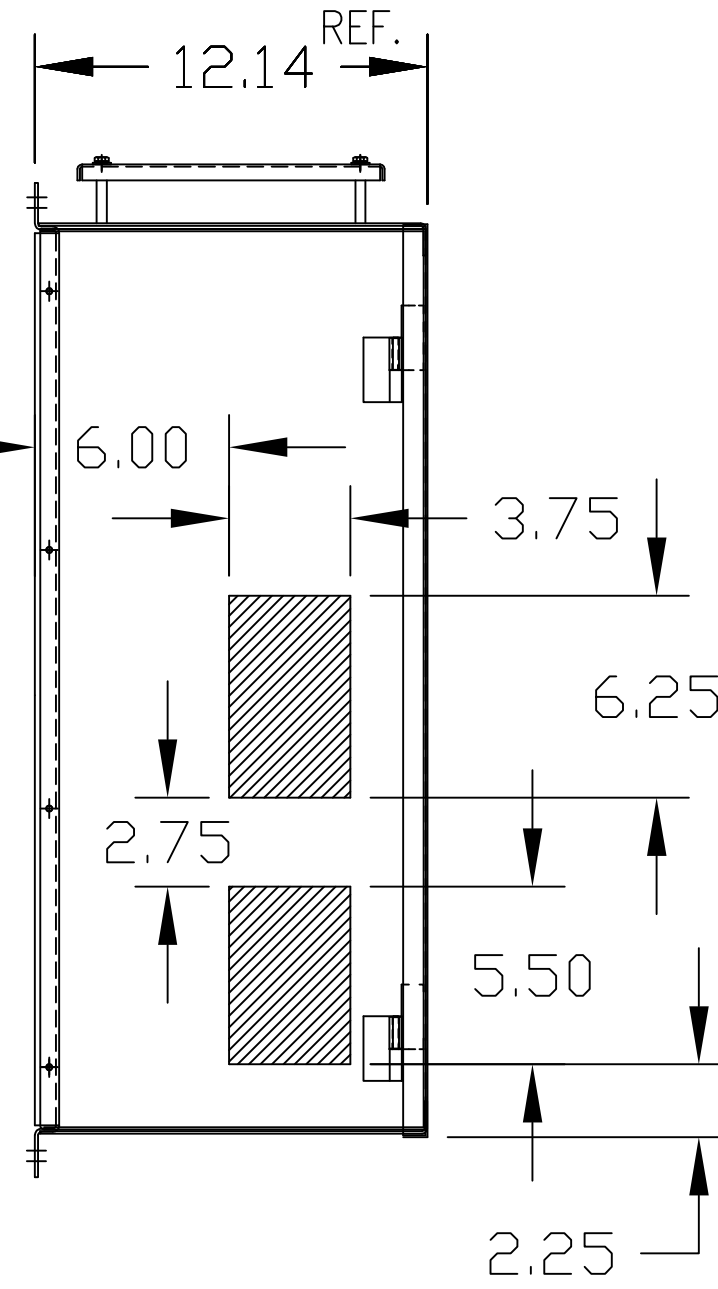
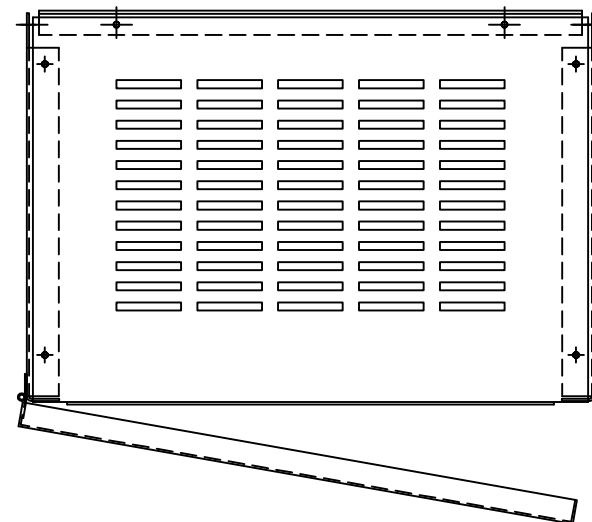


UNIT SPECIFICATIONS:					
KVAR HARMONIC	VOLT	HZ	PHASE	HP	
20 5TH	480	60	3	60	
ENCLOSURE	NEMA 1				
APPROX.WT. LBS.	195				

SYMBOL	HG60AW01STC
LR	X
TR	X
CAP	X
XFMR.	X
Fu1, 2, 3	X
Fu4,6	X
CNT	X



HATCHED AREAS ARE SUGGESTED CUSTOMER WIRE ENTRANCE AND EXIT LOCATIONS (BOTTOM ENTRANCE ALTERNATE-CONSULT TCI)

ENCLOSURE NOT SHOWN

GROUND LUG:
WIRE RANGE-1/0 TO #14 AWG.

- 1/0 AWG thru 2 AWG 50 IN-LBS. MAX.
- 4 AWG thru 6 AWG 45 IN-LBS. MAX.
- 8 AWG 40 IN-LBS. MAX.
- 10 AWG thru 14 AWG 35 IN-LBS. MAX.

CUSTOMER CONNECTION

- PB-POWER INPUT BLOCK:
- 2/0 AWG thru 6 AWG 120 IN-LBS. MAX.
 - 8 AWG 40 IN-LBS. MAX.
 - 10 AWG thru 14 AWG 35 IN-LBS. MAX.

SEE DWG# 26689 FOR SCHEMATIC

CUSTOMER IS RESPONSIBLE FOR INSTALLATION TO MEET ALL NATIONAL AND LOCAL ELECTRICAL CODES.

TOLERANCES (EXCEPT AS NOTED)				TCI		W132 N10611 GRANT DRIVE GERMANTOWN, WI. 53022	
			DECIMAL	.XX ± .03	HG60AW01STC, HG7, W/CNT. 60HP, 480/3/60, TYPE 1		
			FRACTIONAL	.XXX ± .01			
E	3267 CNT CHANGE	8/21/15	ANGULAR	± 1/32	DRN. BY	DATE	DWG. NO.
D	2900 CHG TO ASC CAPS	3/13/13			DSW	7/7/08	103508DG
NO	REVISION	DATE	BY	± 1/2°	SCALE	APRVD.	SHT. 1 OF 1