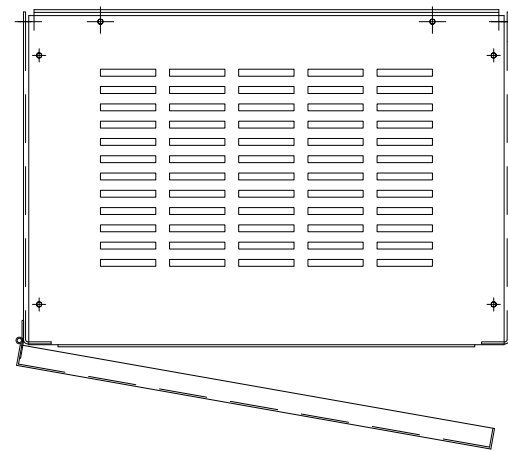
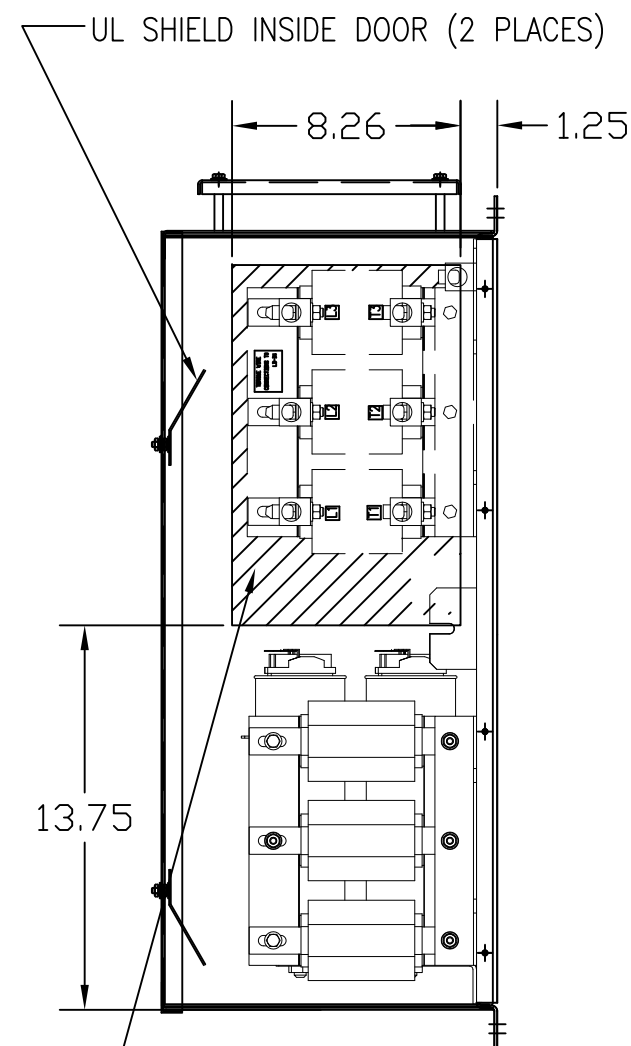
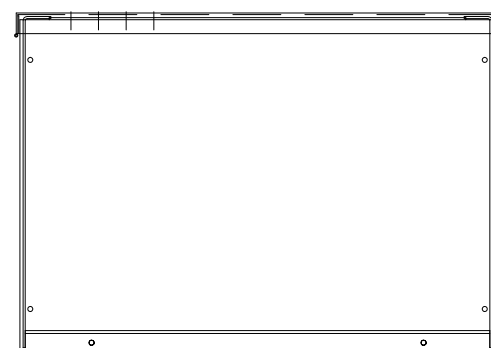
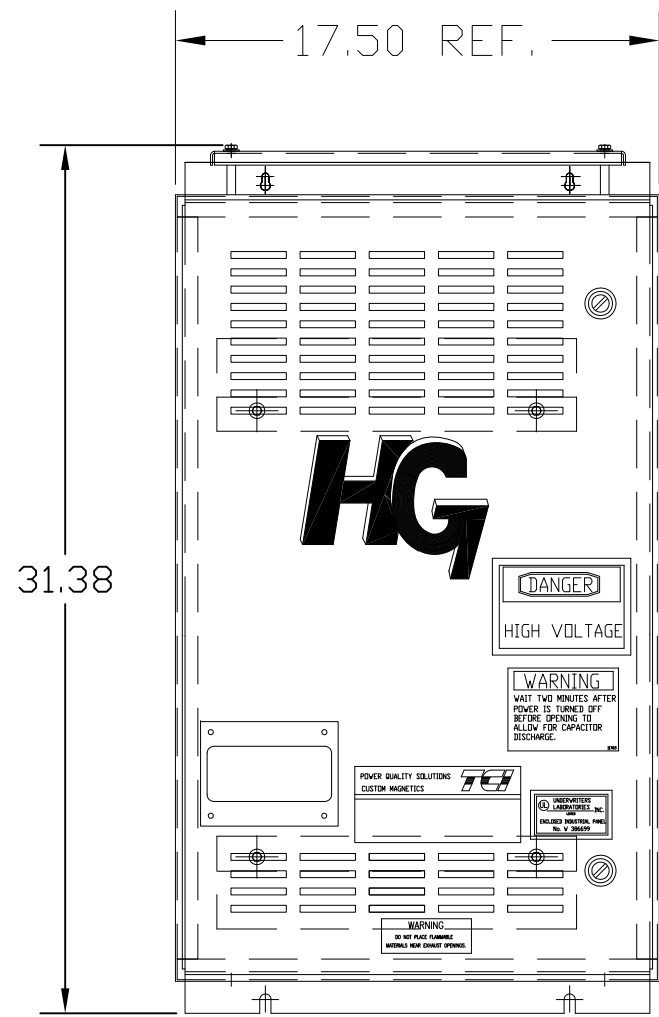
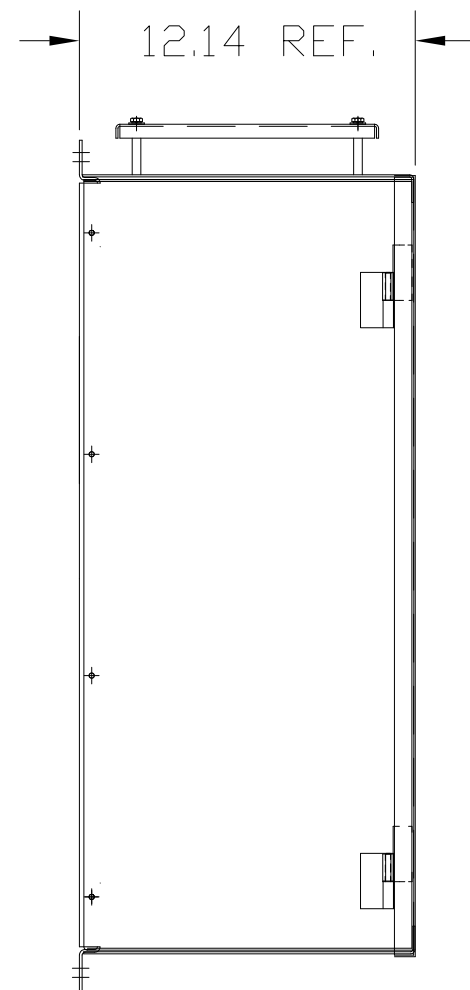


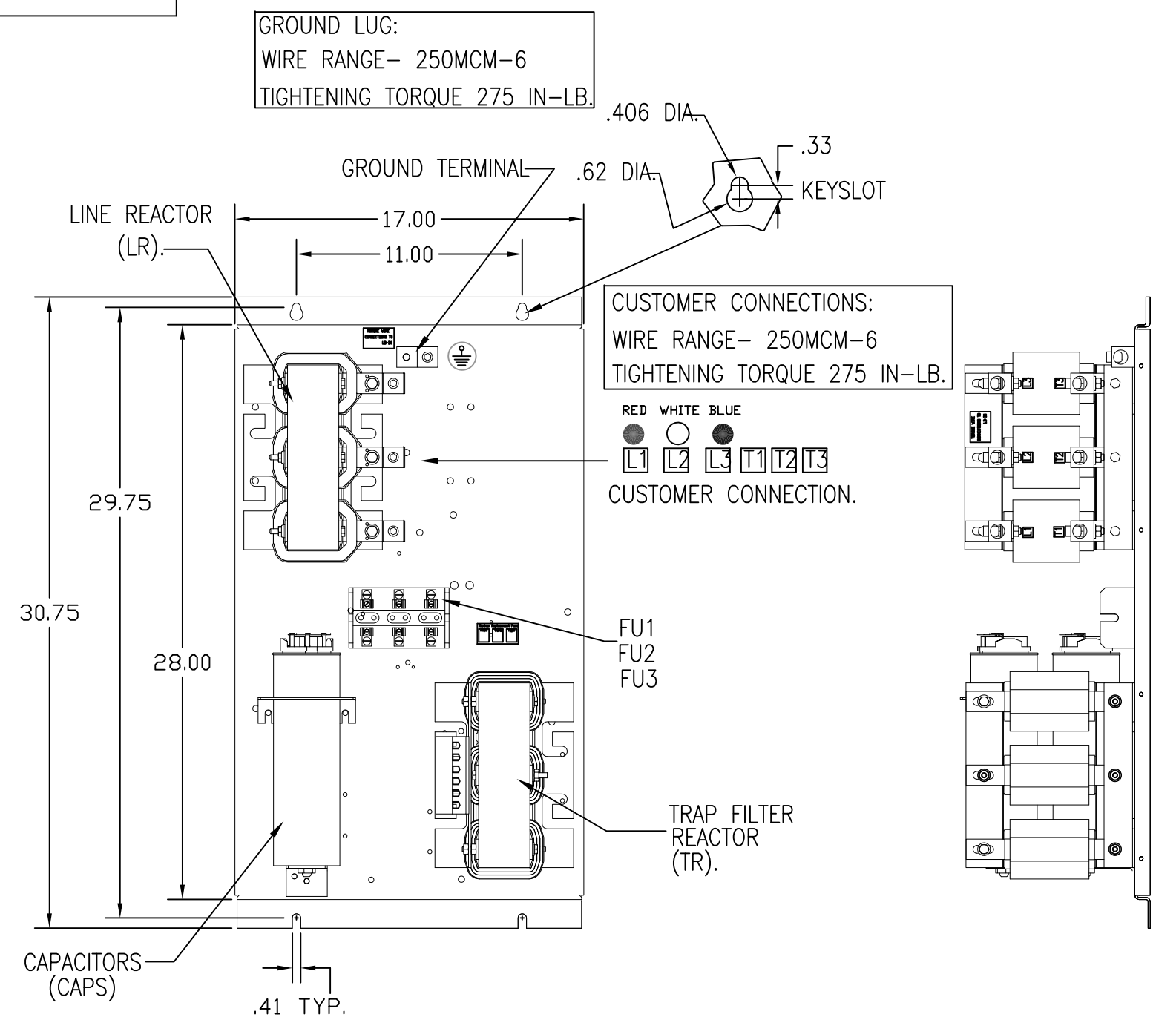
UNIT SPECIFICATIONS:					
KW	HARMONIC	VOLT	HZ	PHASE	FLA
55	5TH	400	50	3	105
ENCLOSURE		NEMA 1			
APPROX.WT. LBS.		188			



SYMBOL	TCI PART NUMBER
LR	KDRG34T
TR	KTR22L55HG
CAP1, 2 (20 KVAR)	KCAP20A6B
Fu1, 2, 3	11006



HATCHED AREAS ARE SUGGESTED  
CUSTOMER WIRE AND EXIT LOCATIONS  
(BOTTOM ENTRANCE ALTERNATE-CONSULT TCI)



ENCLOSURE NOT SHOWN

CUSTOMER IS RESPONSIBLE FOR INSTALLATION  
TO MEET ALL NATIONAL AND LOCAL ELECTRICAL CODES.

SEE DRAWING# 27709 FOR SCHEMATIC

TCI, LLC CLAIMS PROPRIETARY RIGHTS IN THE MATERIAL HEREIN DISCLOSED. IT IS SUPPLIED WITHOUT PREJUDICE TO ANY PATENT RIGHTS OF TCI AND MAY NOT BE REPRODUCED OR USED TO MANUFACTURE ANYTHING SHOWN THEREIN WITHOUT WRITTEN PERMISSION FROM TCI.				TOLERANCES (EXCEPT AS NOTED): DECIMAL	<b>TCI</b> ® W132 N10611 Grant Drive Germentown, WI 53022
				.XX ±.03 .XXX±.01	
				FRACTIONAL ± 1/32	HG55LW01ST, 55KW 400/3/50, ENCLOSED
	AS BUILT	11/04/10	DSW	ANGULAR ± 1/2°	DRN. BY DSW DATE 11/17/2010 DWG. NO. 104512DG
NO REVISION	DATE	BY	SCALE TO FIT	SIZE C	SHT.1 OF 1