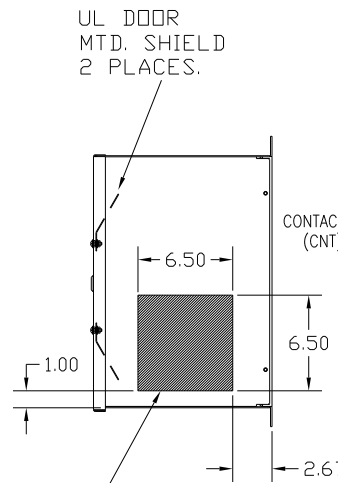
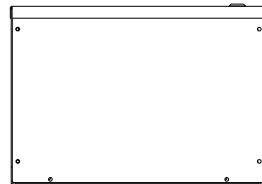
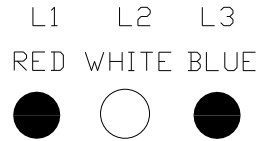
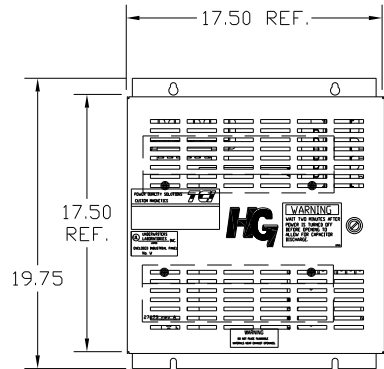
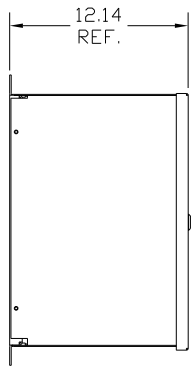


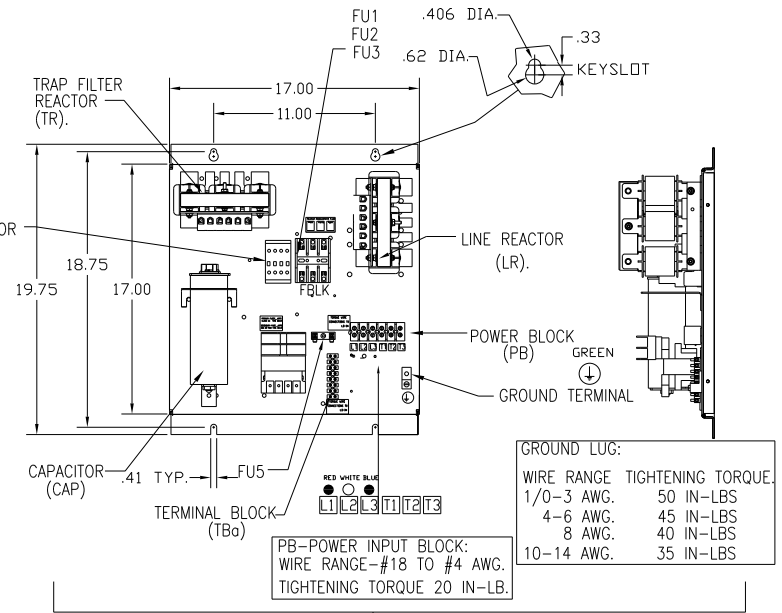
UNIT SPECIFICATIONS:					
KW	HARMONIC	VOLT	HZ	PHASE	FLA
4	5TH	400	50	3	9
ENCLOSURE		NEMA 1			
APPROX.WT. LBS.		64			

SYMBOL	TCI PART NUMBER
LR	KDRD31T
TR	KTRIL55HG
CAP, 1.. (3 KVAR)	KCAP3A6A
XFMR.	24385
Fu1, 2, 3	18124
Fu4,6	13180
Fu5	13364
CNT	12434

SEE 27703 FOR SCHEMATIC



HATCHED AREAS ARE SUGGESTED CUSTOMER WIRE AND EXIT LOCATIONS (BOTTOM ENTRANCE ALTERNATE-CONSULT TCI)



GROUND LUG:		
WIRE RANGE	TIGHTENING TORQUE	
1/0-3 AWG.	50 IN-LBS	
4-6 AWG.	45 IN-LBS	
8 AWG.	40 IN-LBS	
10-14 AWG.	35 IN-LBS	

PB-POWER INPUT BLOCK:  
WIRE RANGE-#18 TO #4 AWG.  
TIGHTENING TORQUE 20 IN-LB.

ENCLOSURE NOT SHOWN

CUSTOMER IS RESPONSIBLE FOR INSTALLATION TO MEET ALL NATIONAL AND LOCAL ELECTRICAL CODES.

TOLERANCES (EXCEPT AS NOTED)				TOLERANCES (EXCEPT AS NOTED)		TOLERANCES (EXCEPT AS NOTED)	
DECIMAL				DECIMAL		DECIMAL	
XX ± .03				XX ± .03		XX ± .03	
XXX ± .01				XXX ± .01		XXX ± .01	
FRACTIONAL				FRACTIONAL		FRACTIONAL	
± 1/32				± 1/32		± 1/32	
ANGULAR				ANGULAR		ANGULAR	
± 1/2°				± 1/2°		± 1/2°	
A	AS BUILT	5/12/11	DSW	DATE	5/12/11	DWG. NO.	104664DG
NO	REVISION	DATE	BY	SCALE	APRVD	SHT. 1	OF 1

**TCI** 7878 N. 86th STREET MILWAUKEE, WI 53224

HG4LW01STC, 4KW 400/3/50, ENCLOSED.