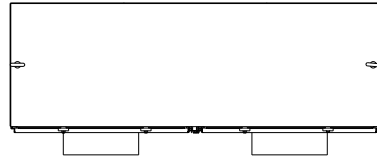


RAINHOOD
4 PLACES.

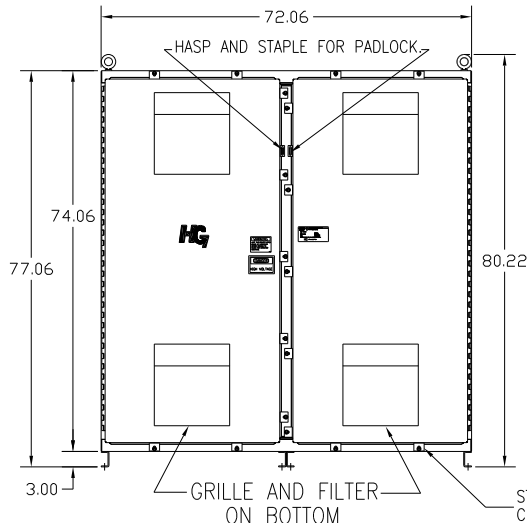
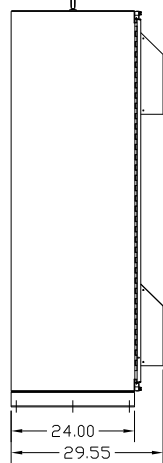
CUSTOMER IS RESPONSIBLE FOR INSTALLATION
TO MEET ALL NATIONAL AND LOCAL ELECTRICAL CODES.

NOTE: USE ONLY HUBS OR FITTINGS THAT COMPLY
WITH UL514B FOR TYPE 3R ENCLOSURES.

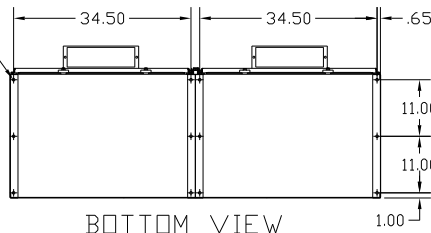


FRONT VIEW WITH DOORS.

SIDE VIEW



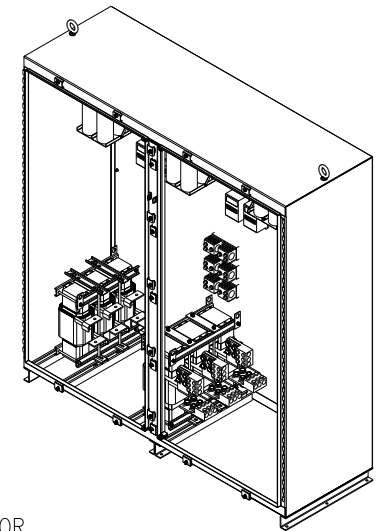
.50 DIA
MOUNTING HOLES
12 PLACES.



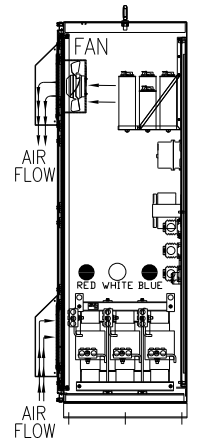
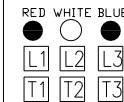
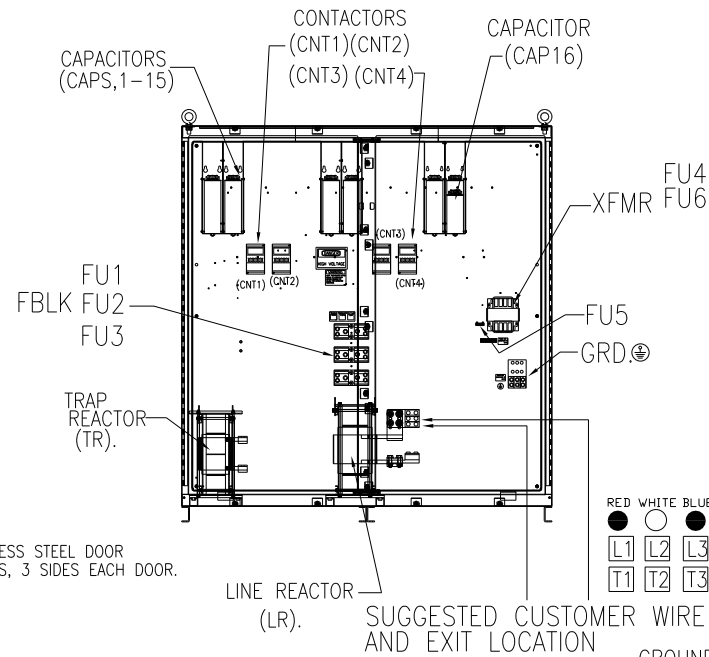
BOTTOM VIEW

HG450LW03STC						
UNIT SPECIFICATIONS:						
KW	HARMONIC	VOLT	HZ	PHASE	FLA	
450	5TH	400	50	3	810	
ENCLOSURE		3R				
APPROX.WT. LBS.		1755				

FOR SCHEMATIC SEE DWG# 27703-1



SIDE VIEW



GROUND LUG:
WIRE RANGE-THREE 600MCM-2
TIGHTENING TORQUE 375 IN.-LB.

CUSTOMER CONNECTIONS:
WIRE RANGE-THREE 600MCM-2
TIGHTENING TORQUE 375 IN.-LB.

SYMBOL	TCI PART NUMBER
LR	KDRY31T
TR	KTR183L55
CAP1,-15 (20 KVAR)	KCAP20A6B
CAP16 (15 KVAR)	KCAP10A6B
XFMR.	24389
Fu1, 2, 3	13329
Fu4,6	23820
Fu5	17569
CNT1-4	19246

				TOLERANCES (EXCEPT AS NOTED)		TCI 7878 N. 86th STREET MILWAUKEE, WI 53224	
				DECIMAL		TCI, HG7 Standard, 450kW 400/3/50, Type 3R, CNT.	
				.XX ± .03		DRW. BY DSW DATE 4/21/2011 DWG. NO. B 104690DG	
				XXX ± .01		SCALE -- APRVD	
				FRACTIONAL ± 1/32		SHT. 1 OF 1	
				ANGULAR ± 1/2°			
A	AS BUILT	4/21/2011	DSW				
NO	REVISION	DATE	BY				