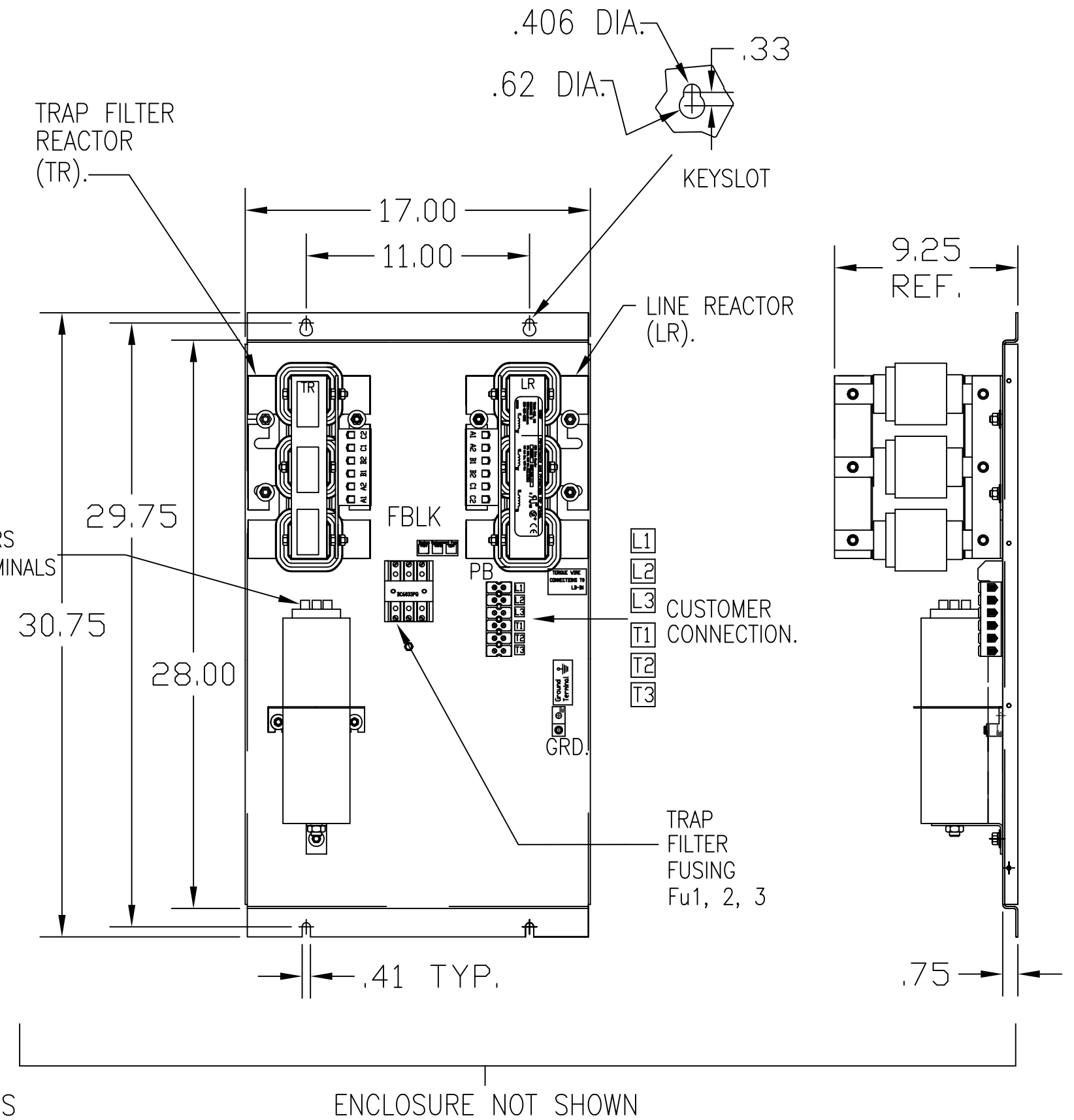
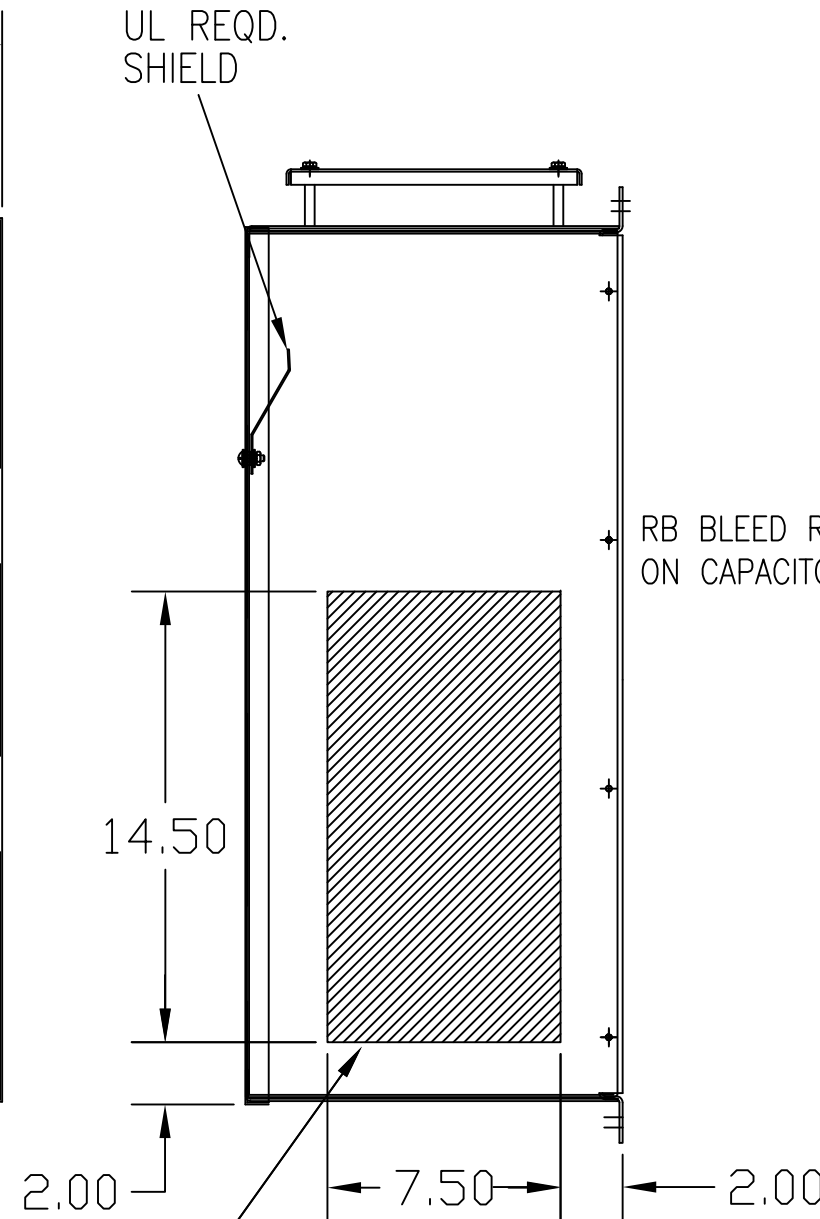
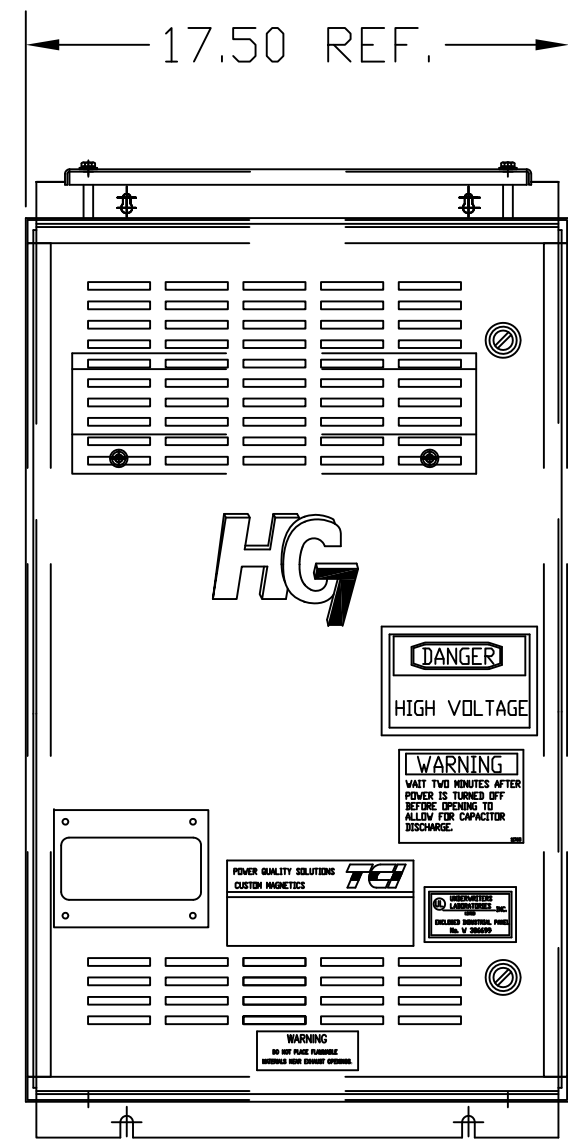
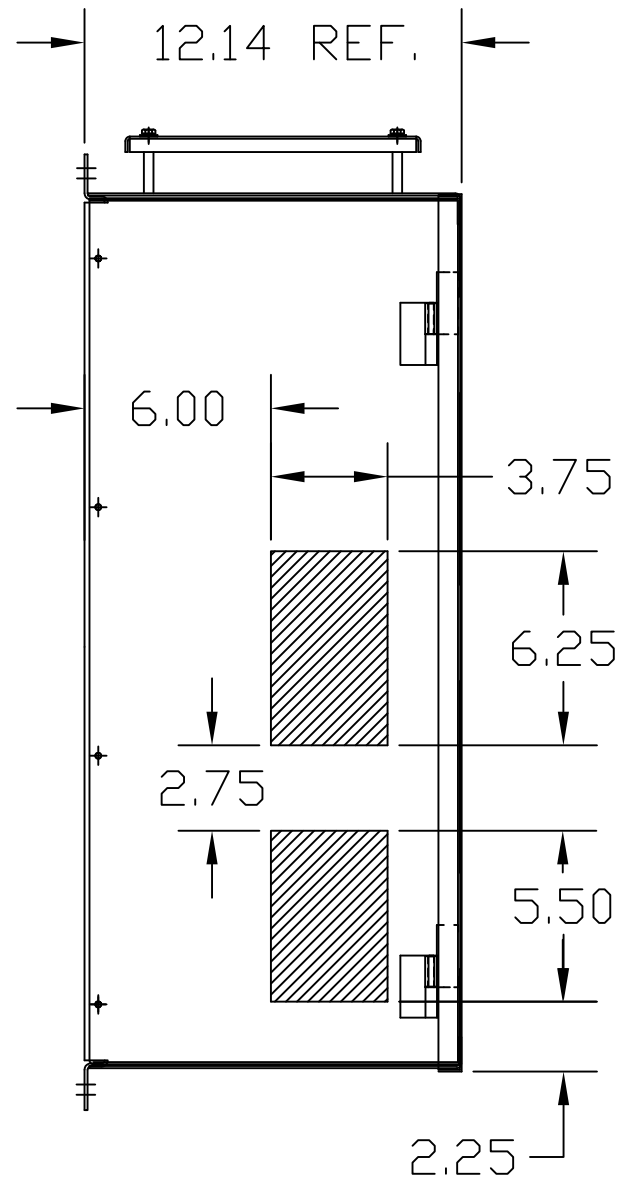
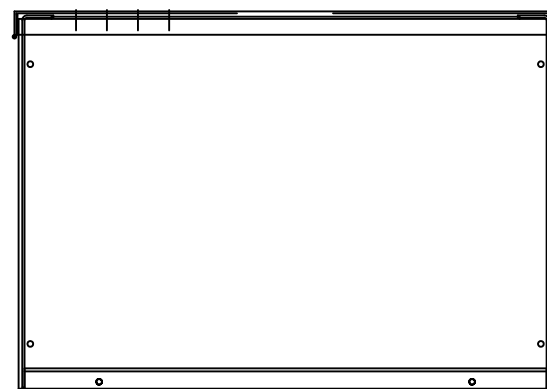


UNIT SPECIFICATIONS:					
KVAR HARMONIC	VOLT	HZ	PHASE	HP	
15 5TH	600	60	3	40	
ENCLOSURE	NEMA 1				
APPROX.WT. LBS.	170				

SYMBOL	TCI PART NUMBER
LR	KDRI41T
TR	KTR15C65HG
CAP.	KCAP15C6B
Fu1, 2, 3	11307



PB-POWER INPUT BLOCK:
WIRE RANGE-#18 TO #4 AWG.
TIGHTENING TORQUE 20 IN-LB.



GROUND LUG:
WIRE RANGE-1/0 TO #14 AWG.
1/0 AWG thru 2 AWG 50 IN-LBS. MAX.
4 AWG thru 6 AWG 45 IN-LBS. MAX.
8 AWG 40 IN-LBS MAX.
10 AWG thru 14 AWG 35 IN-LBS. MAX.

HATCHED AREAS ARE SUGGESTED
CUSTOMER WIRE AND EXIT LOCATIONS
(BOTTOM ENTRANCE ALTERNATE-CONSULT TCI)

SEE 25114 FOR SCHEMATIC

CUSTOMER IS RESPONSIBLE FOR INSTALLATION
TO MEET ALL NATIONAL AND LOCAL ELECTRICAL CODES.

TCI, LLC CLAIMS PROPRIETARY RIGHTS IN THE MATERIAL HEREIN DISCLOSED. IT IS SUPPLIED WITHOUT PREJUDICE TO ANY PATENT RIGHTS OF TCI AND MAY NOT BE REPRODUCED OR USED TO MANUFACTURE ANYTHING SHOWN THEREIN WITHOUT WRITTEN PERMISSION FROM TCI.				TOLERANCES (EXCEPT AS NOTED):	W132 N10611 Grant Drive Germantown, WI 53022 HG40CW01ST, HG7 STANDARD 40HP, 600/3/60, TYPE 1 DRN. BY DSW DATE 3/15/05 DWG. NO. 102481DG SCALE TO FIT SIZE C SHT.1 OF 1
				DECIMAL	
				.XX ±.03 .XXX±.01	
				FRACTIONAL ± 1/32	
	Δ 2516, CAP WAS 17817	9/30/07	RJC	ANGULAR ± 1/2°	
	NO REVISION	DATE	BY		