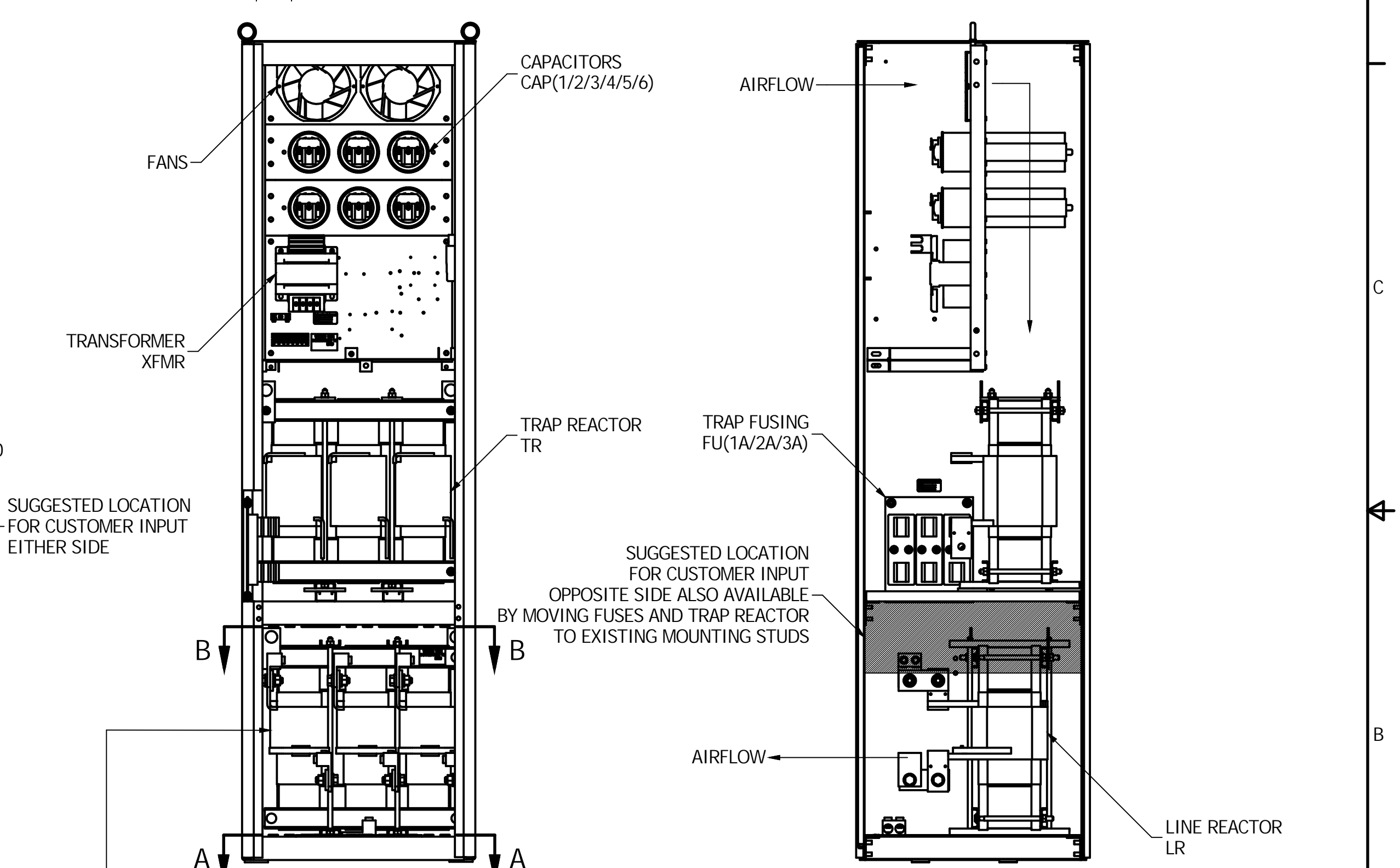
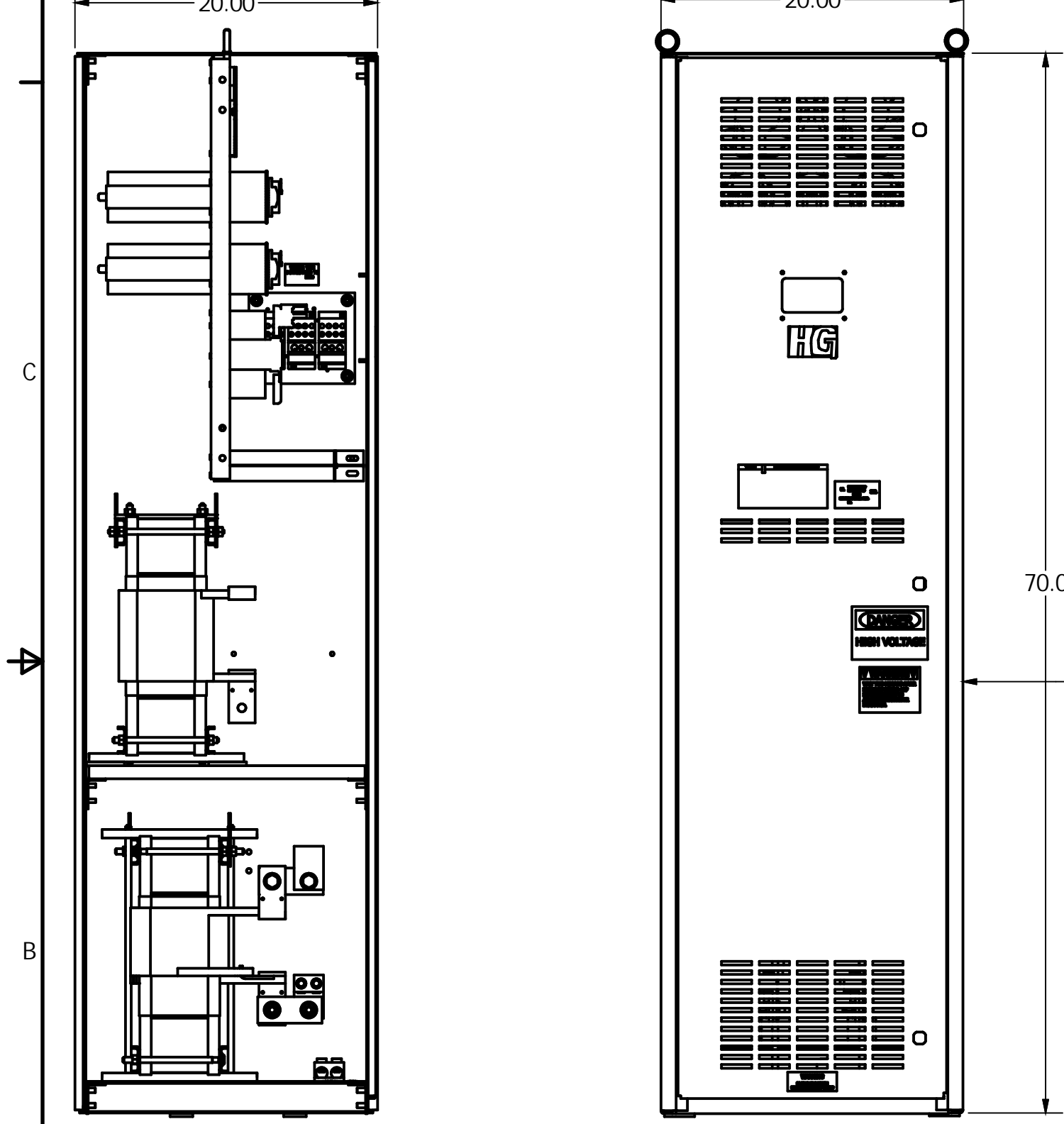


HG400AW01ST	
LINE REACTOR	X
TRAP REACTOR	X
CAPACITOR	X
TRAP FUSING	X
TRANSFORMER	X
XFMR PRIMARY FUSING	X
XFMR SECONDARY FUSING	X



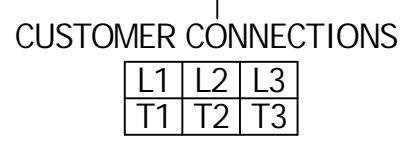
UNIT SPECIFICATIONS					
KVAR	HARMONIC	VOLT	HZ	PHASE	HP
120	5TH	480	60	3	400
ENCLOSURE		NEMA 1			
APPROX. WT.		790 LBS			

SYMBOL	TCI P/N
LR	KDRX3T
TR	KTR120A65HGX3
20 KVAR CAP(1/2/3/4/5/6)	28541
XFMR	23898
FU(1A/2A/3A)	12413
FU(4/6)	13443
FU5	16987

CUSTOMER CONNECTIONS
 WIRE RANGE
 TWO 350 MCM-4 AWG
 TIGHTENING TORQUE 275 IN-LB

GROUND LUG
 WIRE RANGE
 TWO 350 MCM-4 AWG
 TIGHTENING TORQUE 275 IN-LB

FOR SCHEMATIC SEE 25092



CUSTOMER IS RESPONSIBLE FOR INSTALLATION TO MEET ALL NATIONAL AND LOCAL ELECTRICAL CODES

				TOLERANCES (EXCEPT AS NOTED)		TCI W132 N10611 Grant Drive Germantown, WI 53022	
				DECIMAL	.XX +/- .02	HG400AW01ST HG7 STANDARD 400HP 480/3/60 TYPE 1	
				FRACTIONAL	.XXX +/- .01		
				ANGULAR	+/- 1/32		
D	3135 ENCLOSURE UPDATE	1/15/2015	BMZ	SCALE	1:9	DRN. BY	BMZ
NO	REVISION	DATE	BY	DATE	APPRVD.	DATE	102681DG
						C SHEET 1 OF 1	