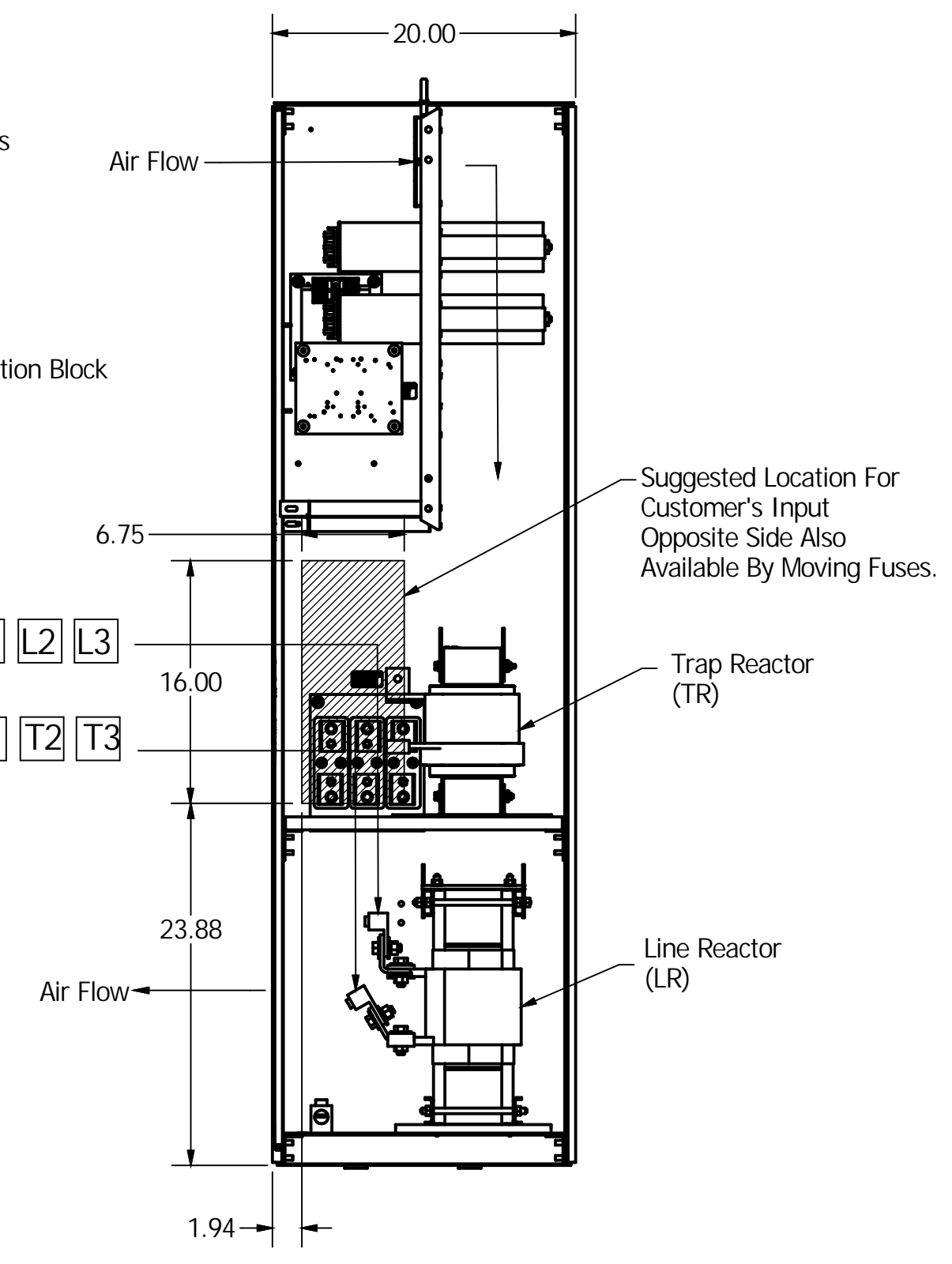
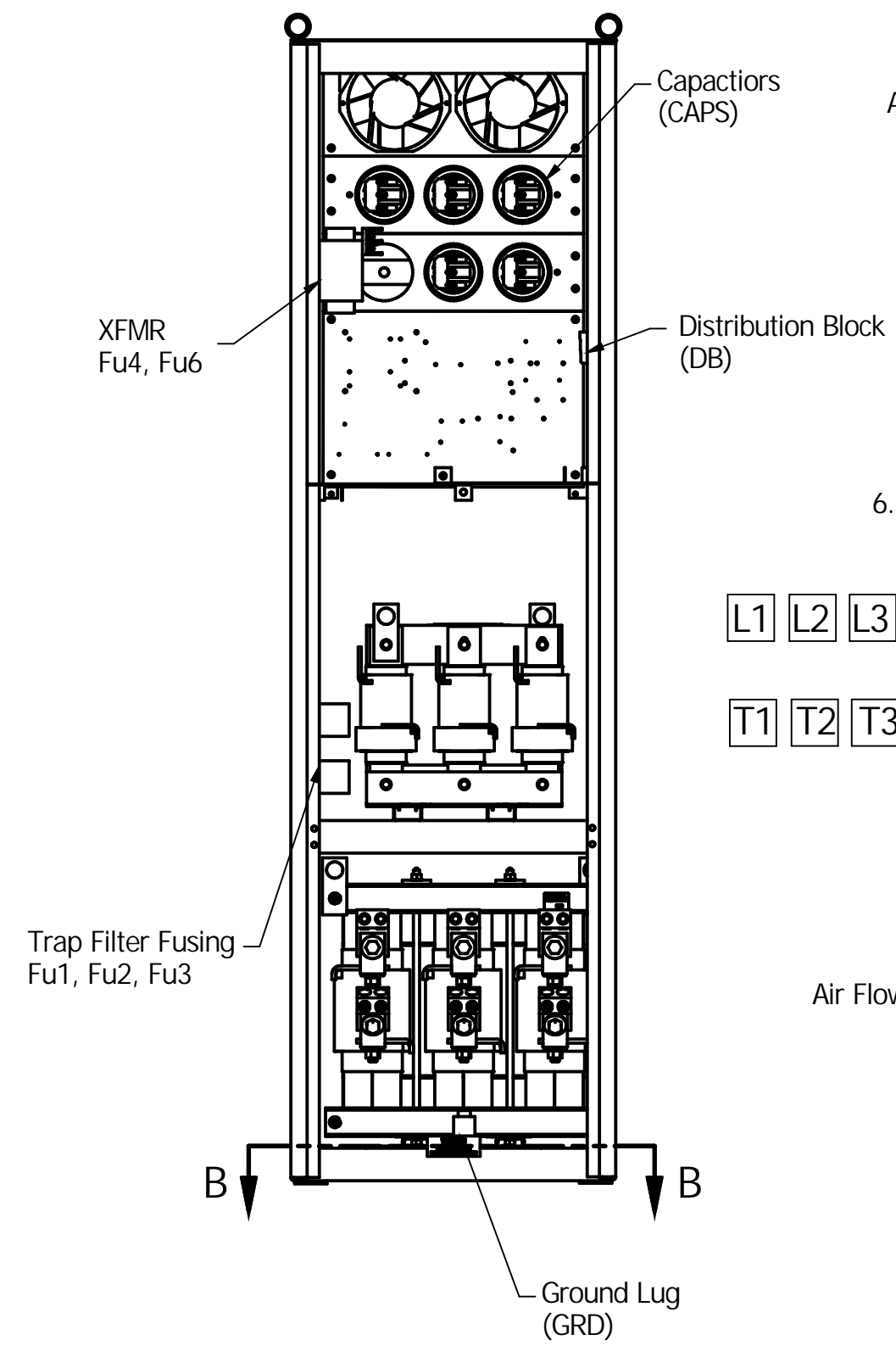
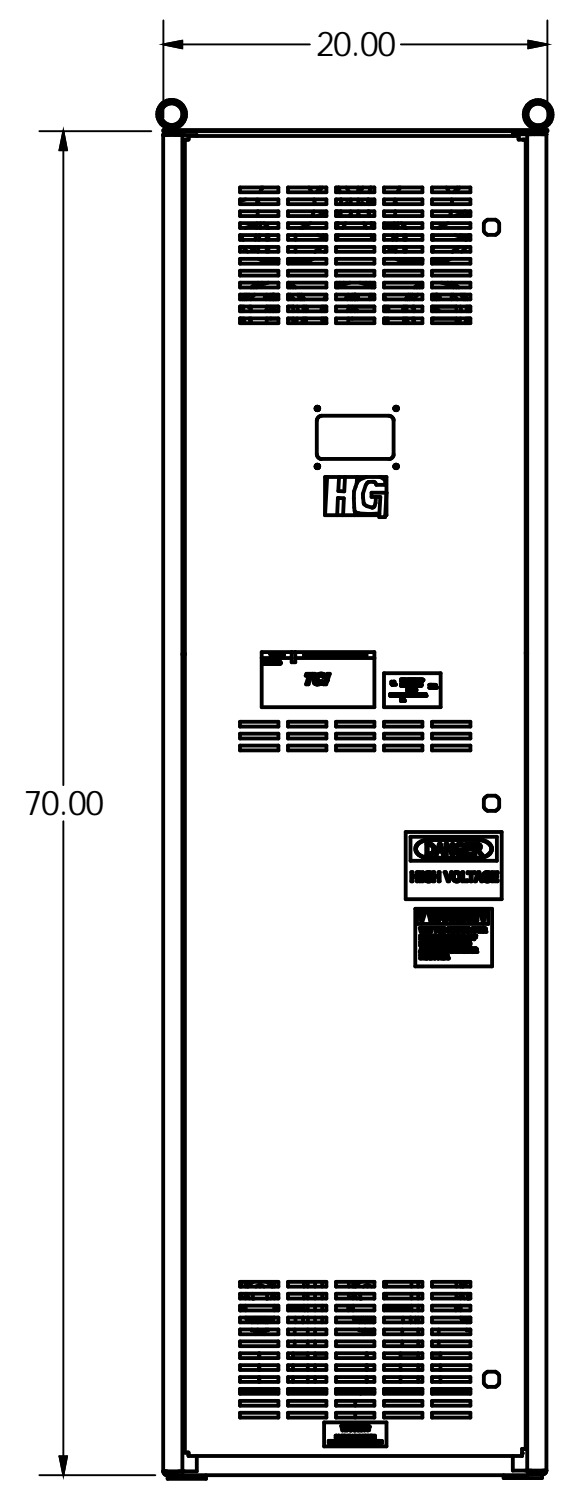
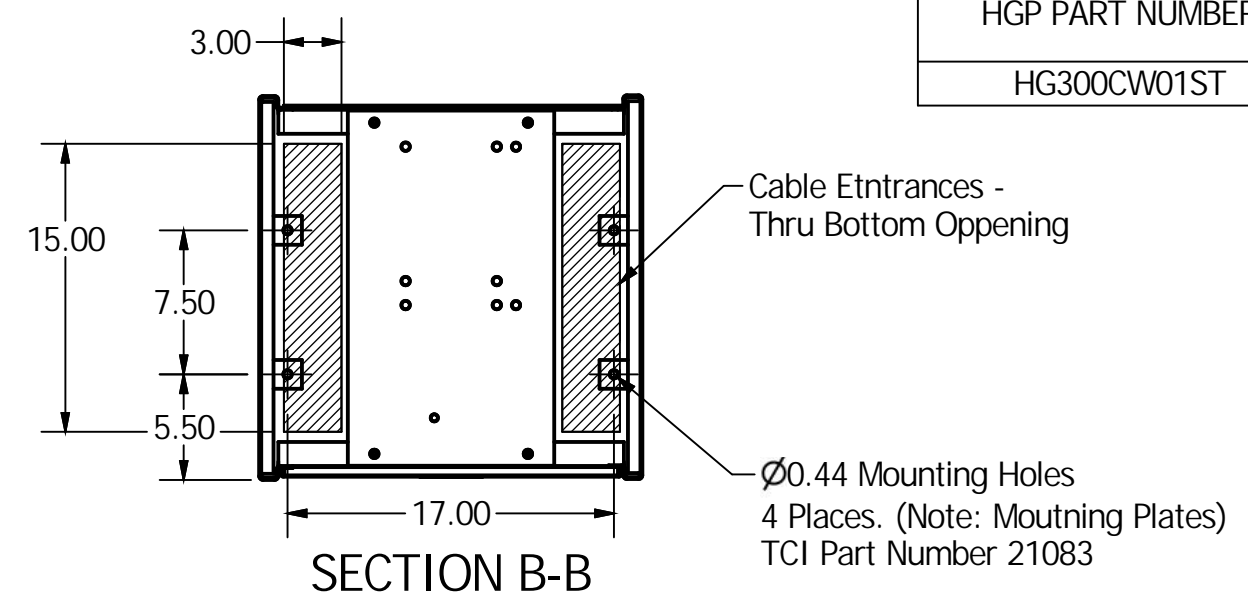


HGP PART NUMBER	HP	KVAR	HARMONIC	VOLT	PHASE	HZ
HG300CW01ST	300	90	5TH	600	3	60

Approx Weight: 675 LBS
For Schematic, See Drawing# 25116

L1 L2 L3 T1 T2 T3
Customer Connections:
Wire Range-Two 350MCM-4
Tightening Torque 275 In-Lb

Ground Lug:
Wire Range-One 600MCM-4
Two 250MCM-1/0
Tightening Torque 500 In-Lb



CUSTOMER IS RESPONSIBLE FOR INSTALLATION TO MEET ALL NATIONAL AND LOCAL ELECTRICAL CODES.

TOLERANCES (EXCEPT AS NOTED)			TCI		W132 N10611 Grant Drive Germantown, WI 53022	
DECIMAL	.XX ± .03	.XXX ± .010	HarmonicGuard Passive HGP300CW01ST 300HP, 600/3/60, Type 1			
FRACTIONAL	± 1/32					
ANGULAR	± 1°		DRN BY: DSW	DATE: 03/18/05	102499DG	
NO	REVISION	DATE	BY	SCALE: TO FIT	APRVD:	SIZE: C