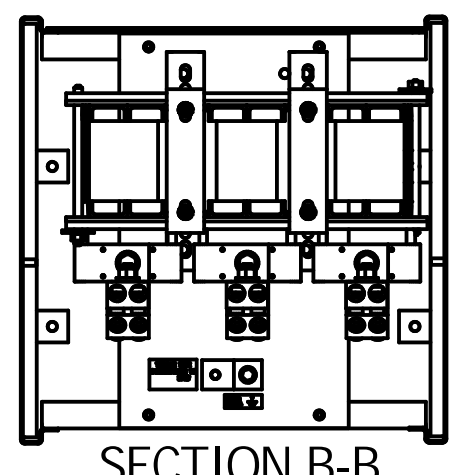
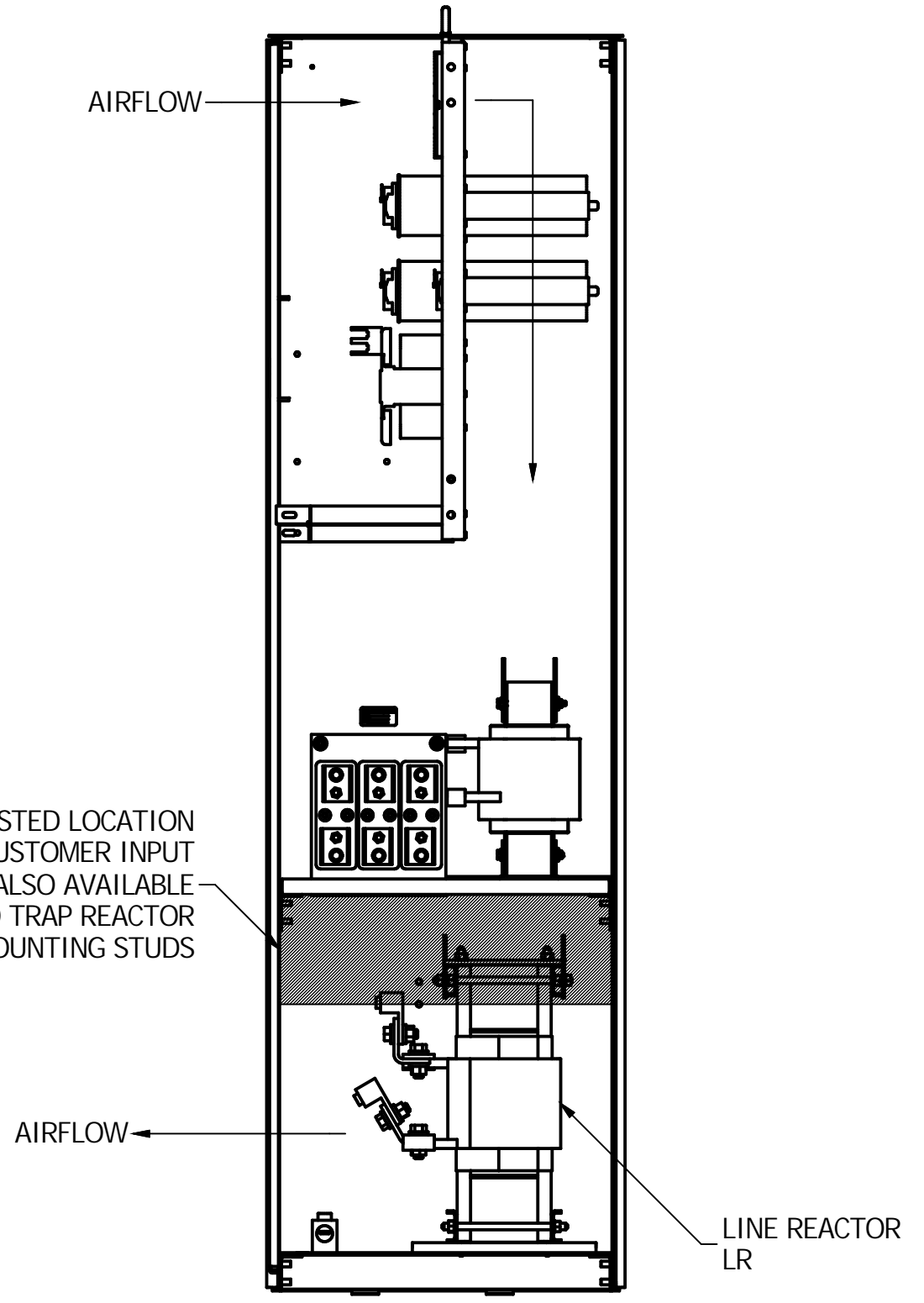
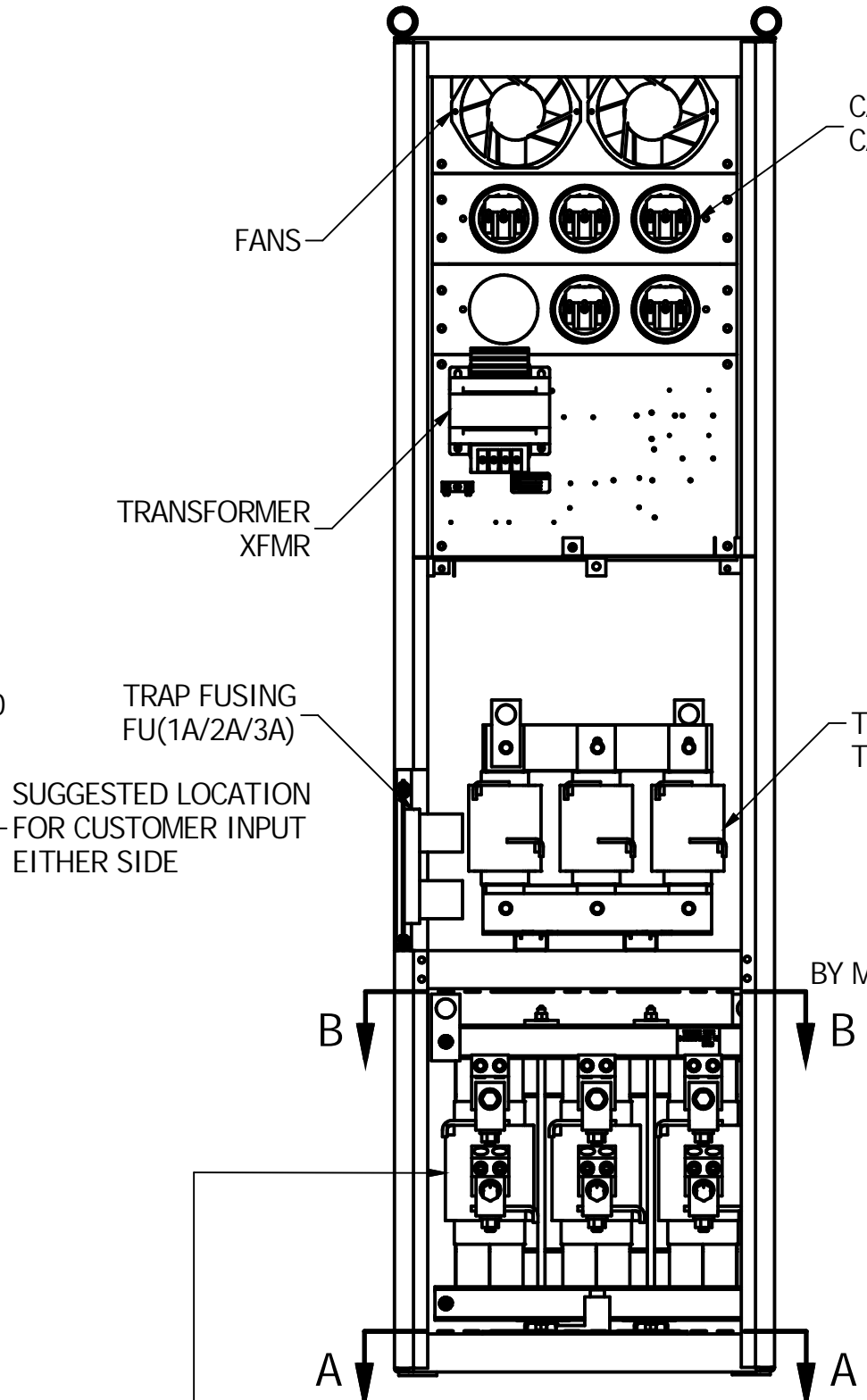
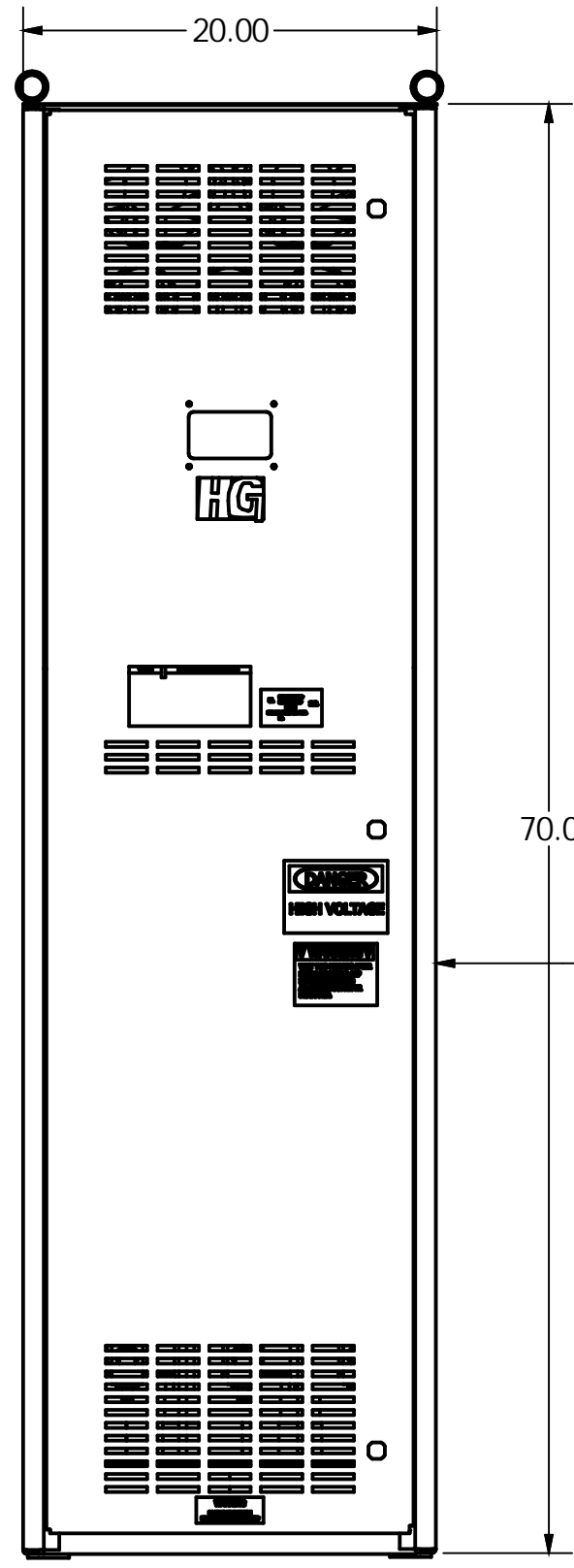
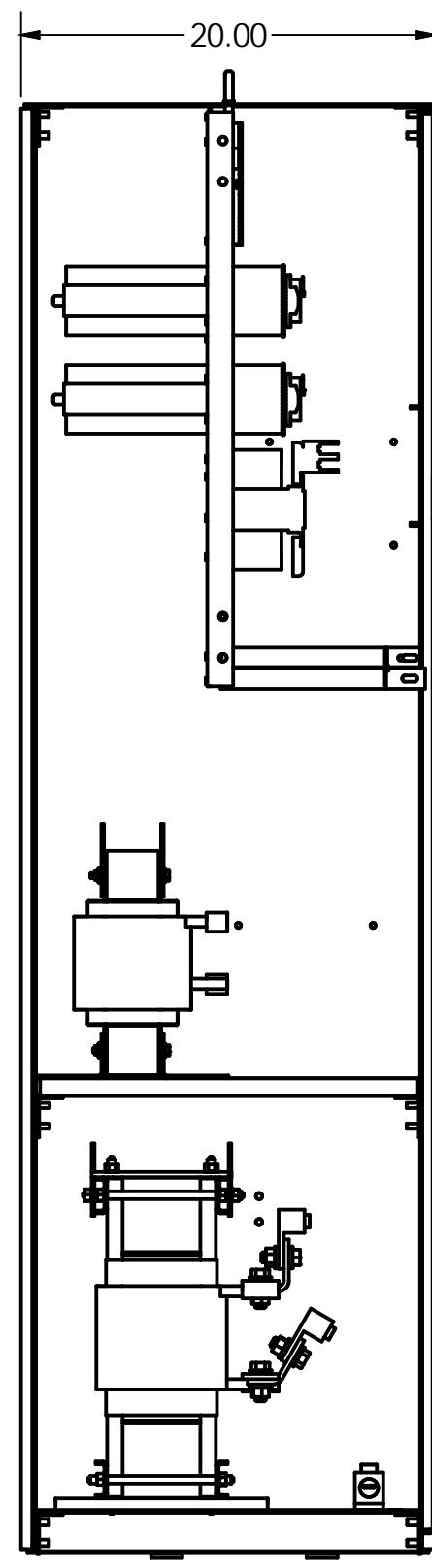
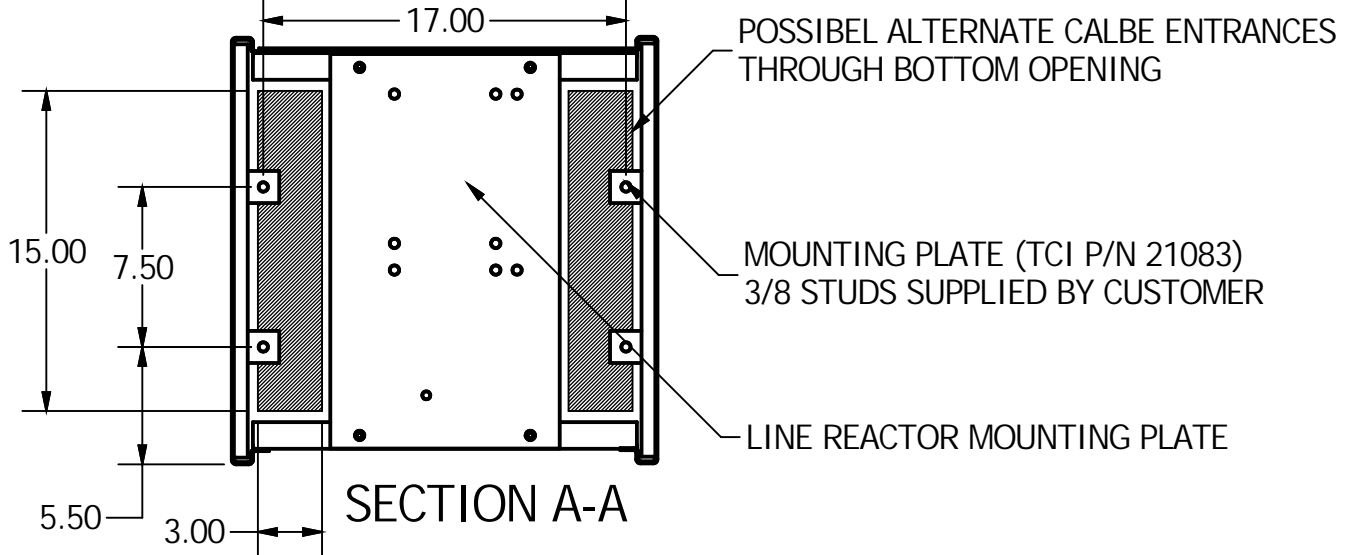


HG300AW01ST	
LINE REACTOR	X
TRAP REACTOR	X
CAPACITOR	X
TRAP FUSING	X
TRANSFORMER	X
XFMR PRIMARY FUSING	X
XFMR SECONDARY FUSING	X



UNIT SPECIFICATIONS					
KVAR	HARMONIC	VOLT	HZ	PHASE	HP
90	5TH	480	60	3	300
ENCLOSURE		NEMA 1			
APPROX. WT.		600 LBS			

SYMBOL	TCI P/N
LR	KDRX1T
TR	KTR90A65HG
20 KVAR CAP(1/2/3/4)	28541
10 KVAR CAP5	28565
XFMR	23898
FU(1A/2A/3A)	11171
FU(4/6)	13443
FU5	16987

CUSTOMER CONNECTIONS  
 WIRE RANGE  
 TWO 350 MCM-4 AWG  
 TIGHTENING TORQUE 275 IN-LB

GROUND LUG  
 WIRE RANGE  
 ONE 600 MCM-4 AWG  
 TWO 250 MCM-1/0 AWG  
 TIGHTENING TORQUE 500 IN-LB

FOR SCHEMATIC SEE 25092

CUSTOMER IS RESPONSIBLE FOR INSTALLATION TO MEET ALL NATIONAL AND LOCAL ELECTRICAL CODES

TOLERANCES (EXCEPT AS NOTED)		TIGHTENING TORQUE		SCALE	
DECIMAL	.XX +/- .02	ONE	600 MCM-4 AWG	SCALE	1:9
FRACTIONAL	.XXX +/- .01	TWO	250 MCM-1/0 AWG	APPROVD.	
ANGULAR	+/- 1/32	TIGHTENING TORQUE 500 IN-LB		DATE	01/12/2015
	+/- 1/2°	FOR SCHEMATIC SEE 25092		BY	BMZ
B 3135 ENCLOSURE UPDATE		1/12/2015		DWG. No. 102567DG	
NO REVISION		DATE		C SHEET 1 OF 1	

**TCI** W132 N10611 Grant Drive  
 Germantown, WI 53022

HG300AW01ST HG7 STANDARD  
 300HP 480/3/60 TYPE 1