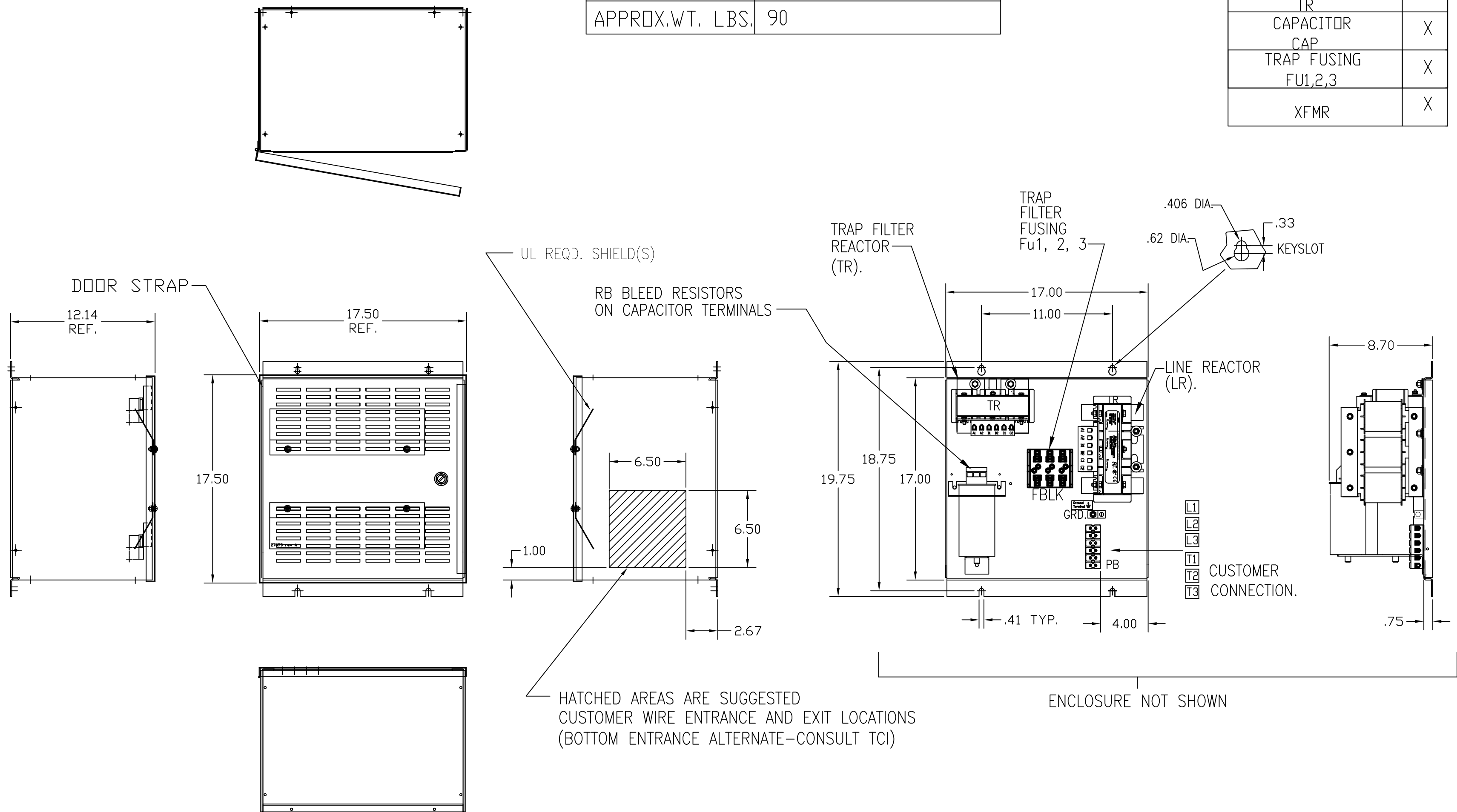


UNIT SPECIFICATIONS:					
KVAR HARMONIC	VOLT	HZ	PHASE	HP	
8	5TH	480	60	3	25
ENCLOSURE	NEMA 1				
APPROX.WT. LBS.	90				

HG25AW01ST	
COMPONENTS	
LINE REACTOR LR	X
TRAP REACTOR TR	X
CAPACITOR CAP	X
TRAP FUSING FU1,2,3	X
XFMR	X




PB-POWER INPUT BLOCK:
WIRE RANGE-#18 TO #4 AWG.
TIGHTENING TORQUE 20 IN-LB.

GROUND LUG:
WIRE RANGE-1/0 TO #14 AWG.
1/0 AWG thru 2 AWG 50 IN-LBS. MAX.
4 AWG thru 6 AWG 45 IN-LBS. MAX.
8 AWG 40 IN-LBS. MAX.
10 AWG thru 14 AWG 35 IN-LBS. MAX.

SEE 25077 FOR SCHEMATIC

CUSTOMER IS RESPONSIBLE FOR INSTALLATION
TO MEET ALL NATIONAL AND LOCAL ELECTRICAL CODES.

TCI, LLC CLAIMS PROPRIETARY RIGHTS IN THE MATERIAL HEREIN DISCLOSED. IT IS SUPPLIED WITHOUT PREJUDICE TO ANY PATENT RIGHTS OF TCI AND MAY NOT BE REPRODUCED OR USED TO MANUFACTURE ANYTHING SHOWN THEREIN WITHOUT WRITTEN PERMISSION FROM TCI.	F	3013 FBLK, CAP CHG	1/27/14	BMZ	TOLERANCES (EXCEPT AS NOTED):	 W132 N10611 Grant Drive Germantown, WI 53022 HG25AW01ST, HG7 STANDARD 25HP, 480/3/60, TYPE 1 DRN. BY DSW DATE 3/08/05 DWG. NO. 102556DG SCALE TO FIT SIZE C SHT.1 OF 1
	E	2900 CHG TO ASC CAPS	2/25/13	DSW	DECIMAL	
	D	2755 BACK TO VISHAY	6/22/11	DSW	.XX ±.03	
	C	2722 ASC CAP TRIAL	1/20/11	DSW	.XXX±.01	
	B	2702 RVSD UL SHIELD	12/14/10	RJC	FRACTIONAL ± 1/32	
	A	MOVED POWER BLOCK	2/20/06	DSW	ANGULAR ± 1/2°	
NO	REVISION	DATE	BY			