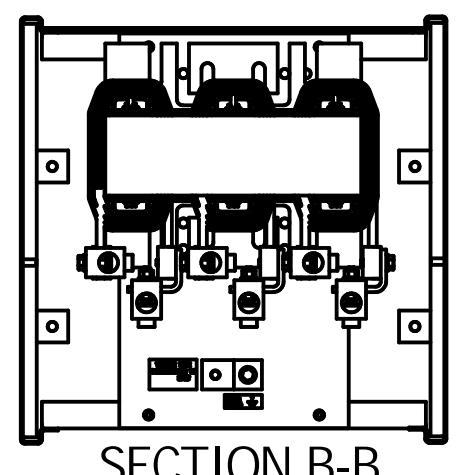
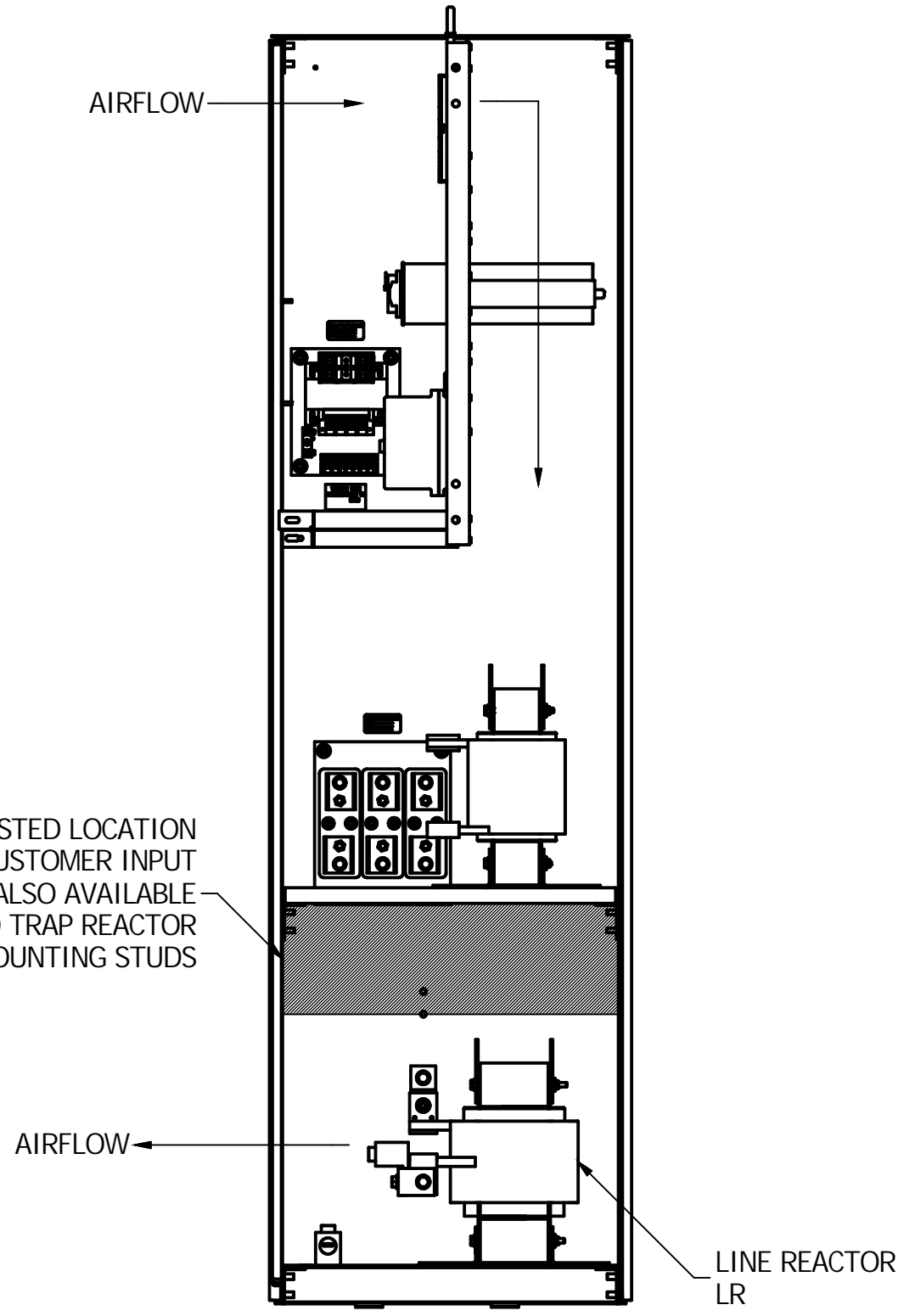
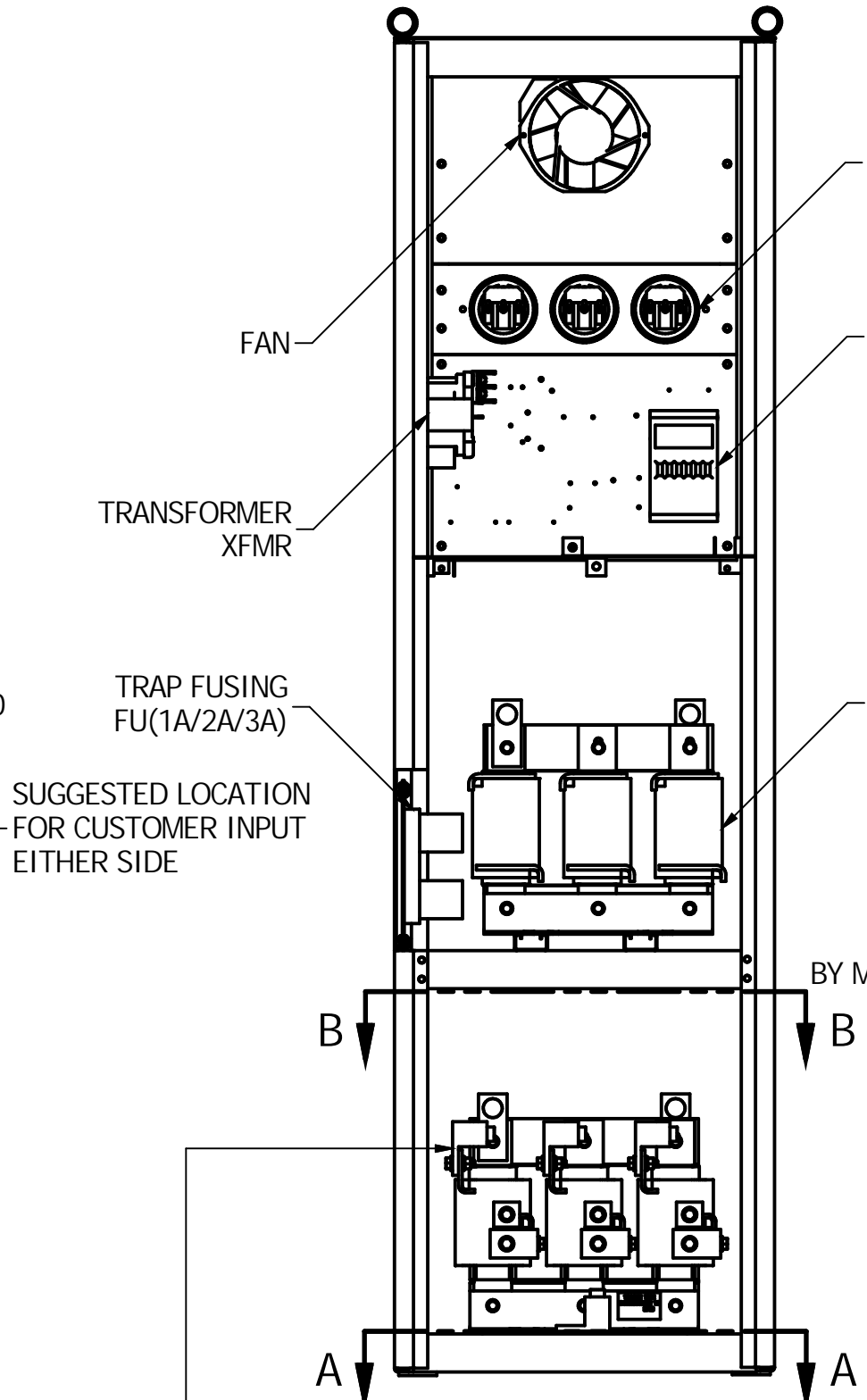
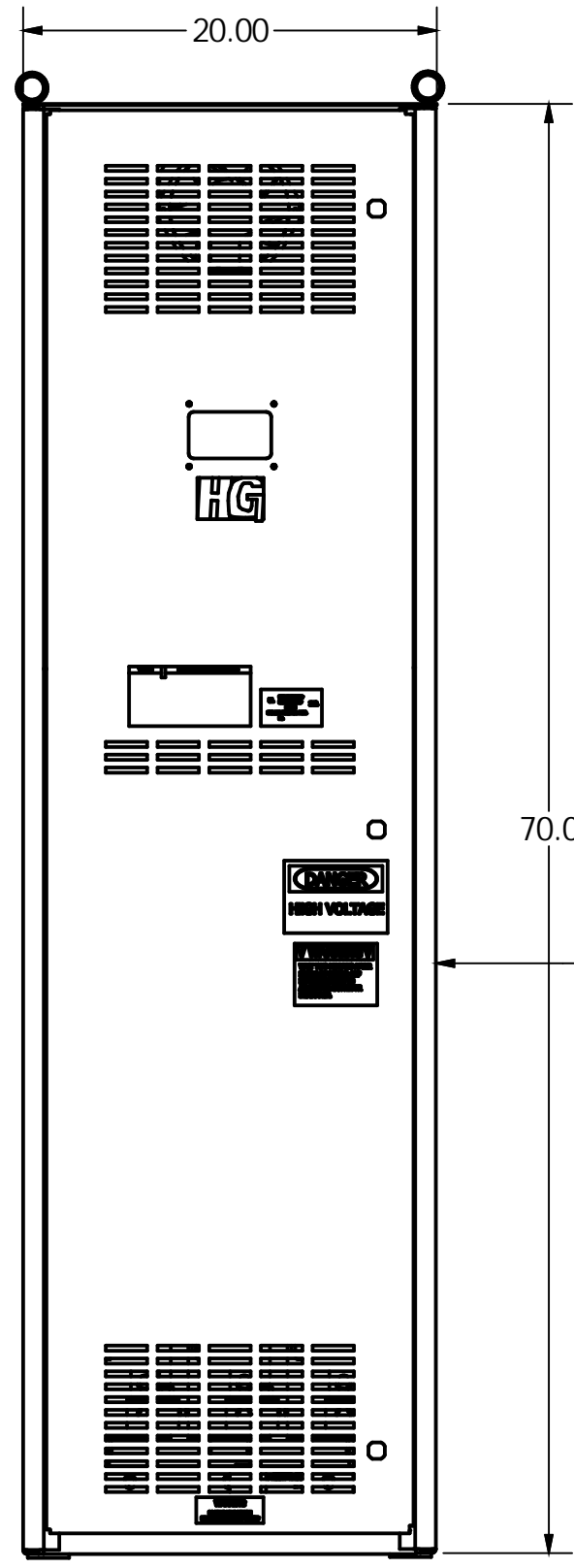
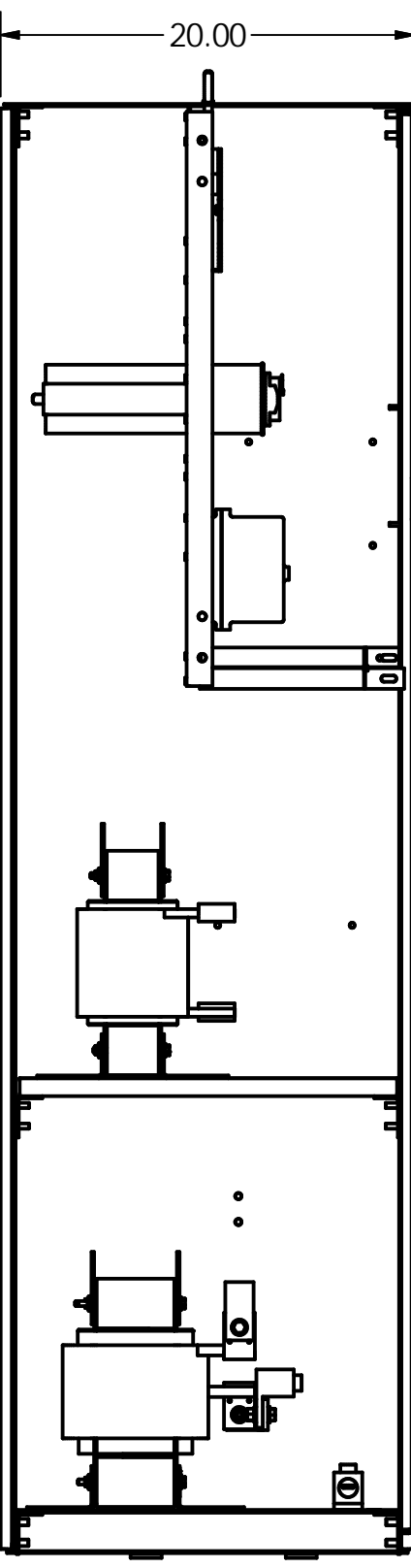
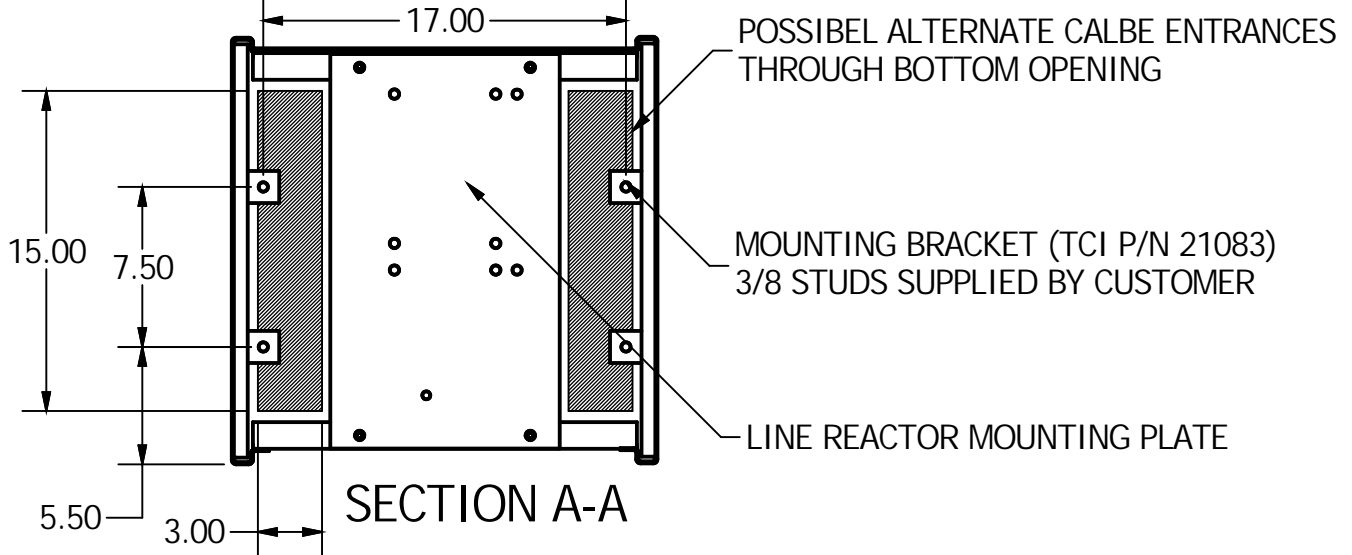


HG200AW01STC	
LINE REACTOR	X
TRAP REACTOR	X
CAPACITOR	X
TRAP FUSING	X
TRANSFORMER	X
XFMR PRIMARY FUSING	X
XFMR SECONDARY FUSING	X
CONTACTOR	X



UNIT SPECIFICATIONS					
KVAR	HARMONIC	VOLT	HZ	PHASE	HP
60	5TH	480	60	3	200
ENCLOSURE		NEMA 1			
APPROX. WT.		500 LBS			

SYMBOL	TCI P/N
LR	KDRS1T
TR	KTR60A65HG
20 KVAR CAP(1/2/3)	28541
XFMR	23894
FU(1A/2A/3A)	11171
FU(4/6)	13203
FU5	13362
CNT	19246

CUSTOMER CONNECTIONS WIRE RANGE	
ONE	600 MCM-4 AWG
TWO	250 MCM-1/0 AWG

TIGHTENING TORQUE 275 IN-LB

GROUND LUG WIRE RANGE	
ONE	600 MCM-4 AWG
TWO	250 MCM-1/0 AWG

TIGHTENING TORQUE 500 IN-LB

FOR SCHEMATIC SEE 26690-1

CUSTOMER CONNECTIONS

L1	L2	L3
T1	T2	T3

CUSTOMER IS RESPONSIBLE FOR INSTALLATION TO MEET ALL NATIONAL AND LOCAL ELECTRICAL CODES

TOLERANCES (EXCEPT AS NOTED)			
DECIMAL	.XX	+/-	.02
FRACTIONAL	.XXX	+/-	.01
ANGULAR	+/-	1/32	
ANGULAR	+/-	1/2°	

C 3135 ENCLOSURE UPDATE		1/13/2015	BMZ	W132 N10611 Grant Drive Germantown, WI 53022
NO	REVISION	DATE	BY	
HG200AW01STC HG7 CONTACTOR 200HP 480/3/60 TYPE 1				DWG. No. 103513DG SCALE 1:9 APPRVD. C
DRN. BY		DATE	DWG. No.	
BMZ		01/13/2015	103513DG	
SHEET 1 OF 1				