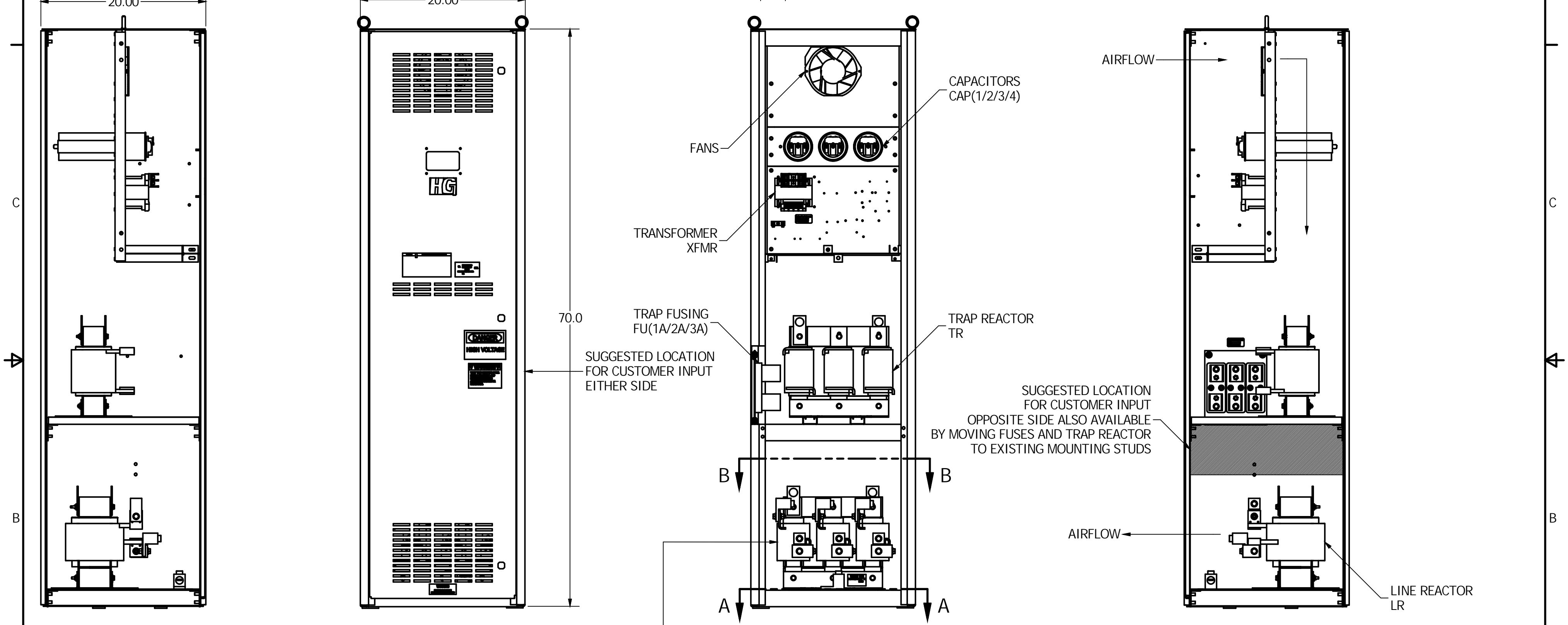


HG200AW01ST	
LINE REACTOR	X
TRAP REACTOR	X
CAPACITOR	X
TRAP FUSING	X
TRANSFORMER	X
XFMR PRIMARY FUSING	X
XFMR SECONDARY FUSING	X



UNIT SPECIFICATIONS					
KVAR	HARMONIC	VOLT	HZ	PHASE	HP
60	5TH	480	60	3	200
ENCLOSURE		NEMA 1			
APPROX. WT.		500 LBS			

SYMBOL	TCI P/N
LR	KDRS1T
TR	KTR60A65HG
20 KVAR CAP(1/2/3)	28541
XFMR	23894
FU(1A/2A/3A)	11171
FU(4/6)	13203
FU5	13362

CUSTOMER CONNECTIONS WIRE RANGE	
ONE	600 MCM-4 AWG
TWO	250 MCM-1/0 AWG

TIGHTENING TORQUE 500 IN-LB

GROUND LUG WIRE RANGE	
ONE	600 MCM-4 AWG
TWO	250 MCM-1/0 AWG

TIGHTENING TORQUE 500 IN-LB

FOR SCHEMATIC SEE 25092

CUSTOMER CONNECTIONS

L1	L2	L3
T1	T2	T3

CUSTOMER IS RESPONSIBLE FOR INSTALLATION TO MEET ALL NATIONAL AND LOCAL ELECTRICAL CODES

TOLERANCES (EXCEPT AS NOTED)	
DECIMAL	.XX +/- .02
FRACTIONAL	.XXX +/- .01
ANGULAR	+/- 1/32
	+/- 1/2°

B 3135 ENCLOSURE UPDATE		1/15/2015	BMZ	<b>W132 N10611 Grant Drive Germantown, WI 53022</b>
NO	REVISION	DATE	BY	

HG200AW01ST HG7 STANDARD 200HP 480/3/60 TYPE 1		DWG. No.	102565DG
DRN. BY	DATE	APPRVD.	C
BMZ	01/15/2015		SHEET 1 OF 1
SCALE	1:9		