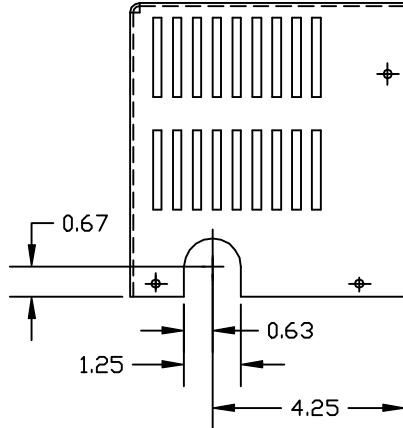
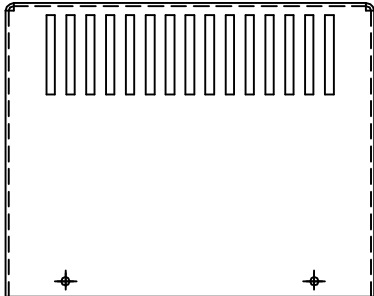
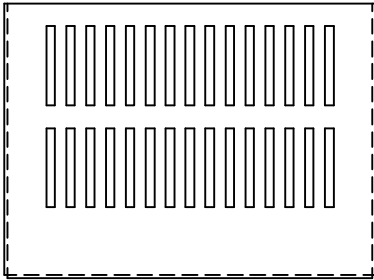
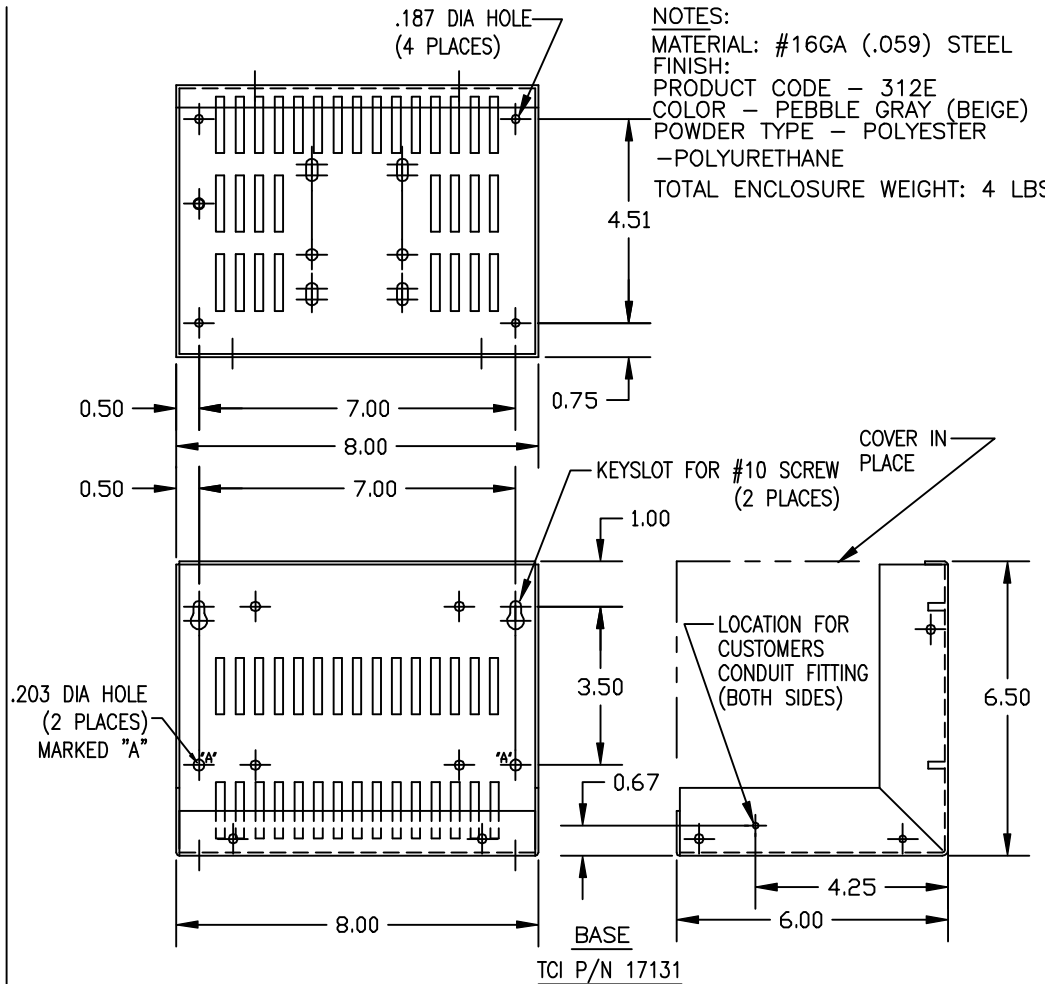


NOTES:
 MATERIAL: #16GA (.059) STEEL
 FINISH:
 PRODUCT CODE - 312E
 COLOR - PEBBLE GRAY (BEIGE)
 POWDER TYPE - POLYESTER
 -POLYURETHANE



COVER
 TCI P/N 17132

NOTES:
 MATERIAL: #16GA (.059) STEEL
 FINISH:
 PRODUCT CODE - 312E
 COLOR - PEBBLE GRAY (BEIGE)
 POWDER TYPE - POLYESTER
 -POLYURETHANE
 TOTAL ENCLOSURE WEIGHT: 4 LBS.



				TOLERANCES (EXCEPT AS NOTED)		7878 N. 86th STREET MILWAUKEE, WI 53224	
				DECIMAL			
				.XX ± .01		KLC CABINET SIZE 1 BASE AND COVER	
				.XXX ± .005			
				FRACTIONAL		DRN. BY: RJC DATE: 04-04-01 DVG. NO.: B C1 SCALE: 3/8"=1' APRVD:	
				± 1/32			
				ANGULAR		SHT. 1 OF 1	
				± 1/2°			
△	REDRAWN -NO REVS.	4/4/01	RJC				
NO	REVISION	DATE	BY				