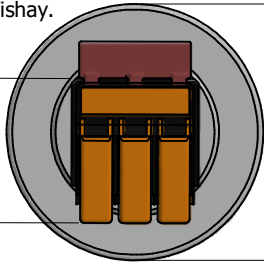


Capacitor, 10kVar, 480V, 60Hz
 Dry Version, Spring Clamp, Vishay.
 3 x 38.5uF Delta Connection
 Approx Weight: 1.80LBS

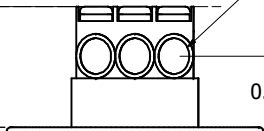
1.96 ± 0.039
 3.47 ± 0.039



Wire Range: 14 AWG To 4 AWG
 Strip Length: 0.71 IN.
 Wire Insulation Insertion Depth: 0.315 IN.
 Maximum Ferrule Dimensions: Rectangular 0.299 IN Wide
 By 0.236 IN Thick, Long Dimension Horizontal.

**Required Clearance
 For Overpressure
 Tear-Off Expansion**

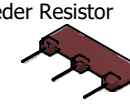
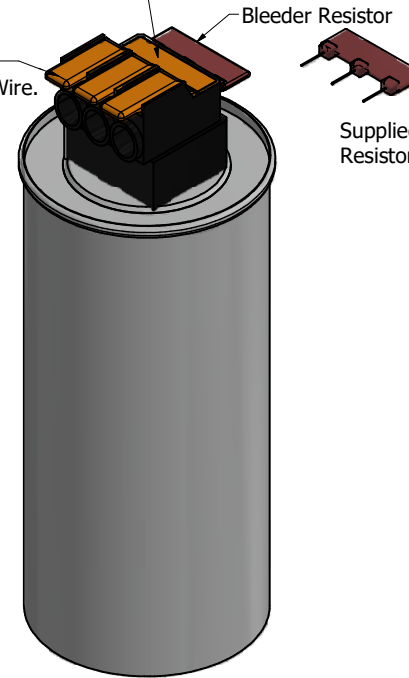
0.98
 1.63 ± 0.039
 0.96 ± 0.039



Open Lever to Insert Wire
 Release or Close Lever After Wire Is Inserted to Clamp Wire.
 Lever Is Designed for at Least 10 Operating Cycles.
 Continuous Use Can Result in Excessive Wear.

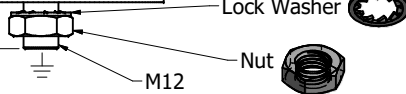
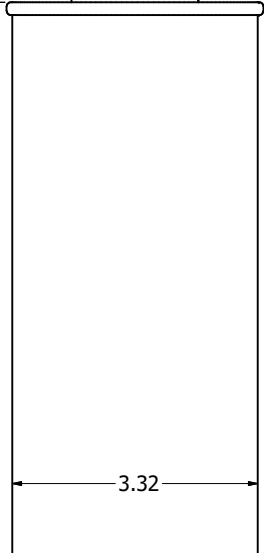
**Warning: Bleeder Resistor Must Be Installed
 In Every Capacitor
 Capacitor Voltage Will Not Discharge After
 Switching Power Off Without Bleeder Resistor Installed.**

Press Orange Plate Marked "PUSH"
 Leads Into Capacitor Terminal Block.
 Body Of Resistor Will Be Flush With Terminal Block.



Supplied Factory Bleeder
 Resistor Value, 420k

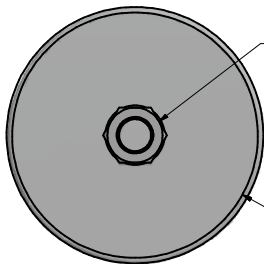
7.48 ± 0.059



0.63 ± 0.020

M12

Lock Washer
 Nut
 Mounting Nut Tightening Torque: 88.5 (LBS-IN) 10 [Nm].



Ø3.32

Warning



After switching off the power, always allow 5 minutes for the capacitors in the filter and in the drive to discharge before working on the filter, the drive, the motor, or the connecting wiring. It is a good idea to check with a voltmeter to make sure that all sources of power have been disconnected and that all capacitors have discharged before beginning work.

Material(s) Shall be RoHS Compliant
 Material(s) shall meet REACH requirements
 Dimensions are in inches unless otherwise specified.

TOLERANCES (EXCEPT AS NOTED)		THE INFORMATION AND DESIGN CONTAINED IN THIS DRAWING ARE CONFIDENTIAL AND THE PROPRIETARY PROPERTY OF ALLIANT INC. AND ITS SUBSIDIARIES. NEITHER THIS DESIGN NOR ANY INFORMATION CONTAINED IN THIS DRAWING MAY BE REPRODUCED OR DISCLOSED TO OTHERS WITHOUT THE EXPRESS WRITTEN CONSENT OF ALLIANT INC. AND ITS SUBSIDIARIES.				DESIGNED BY DSW	DATE 12/19/24	W132N10611 Grant Drive Germantown, WI 53022 © 2024 Alliant Inc.
DECIMAL .XX ± .06 .XXX ± .03								Cap, 10KvAR, 480V, 60Hz Dry, Spring Clamp, Vishay
FRACTIONAL ± 1/32								
ANGULAR ± 1°								32813
NO ECO REVISION		DATE		BY		SCALE		SIZE
		12/19/24		DSW		1:1.3		C
								SHT.1 OF 1