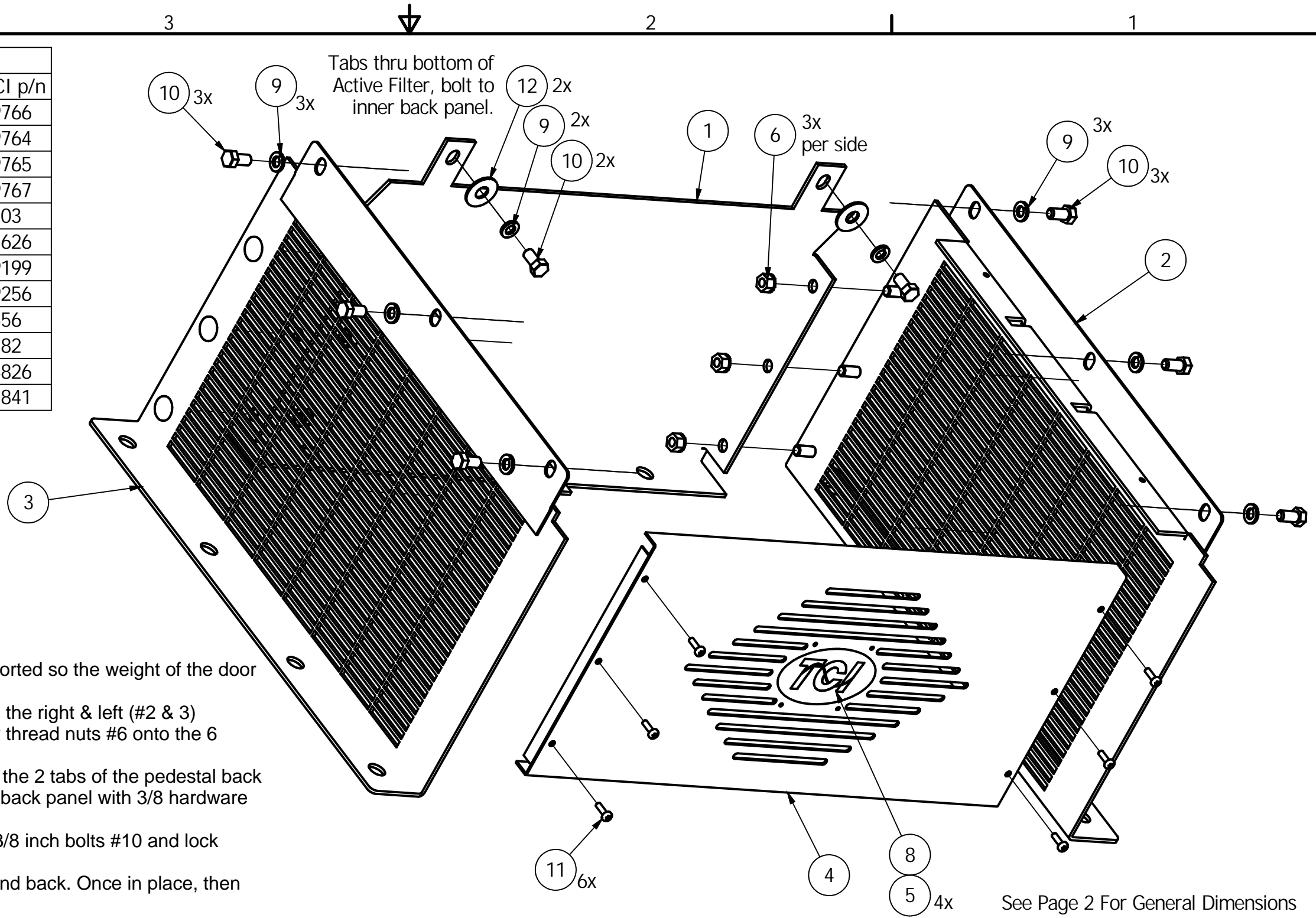


PARTS LIST			
ITEM	DESCRIPTION	QTY	TCI p/n
1	Back, Pedestal, 250A Active Filter	1	29766
2	Right Side, Pedestal, 250/500A Active Filter	1	29764
3	Left Side, Pedestal, 250/500A Active Filter	1	29765
4	Front Cover, Pedestal, 250A Active Filter	1	29767
5	Nut, Flange, 6-32, Stl	4	3103
6	Nut, KEPS, .38-16, Stl	6	11626
7	Plate, Label, Pedestal	1	29199
8	Label, TCI, Pedestal	1	29256
9	Helical Spring Lock Washer	8	1556
10	Bolt, HH, .38-16, .75, Stl	8	1782
11	Screw, PH, TORX Taptite 10-32X.63 Zn	6	24826
12	Washer, Fl, .44, Stl, USS	2	11841



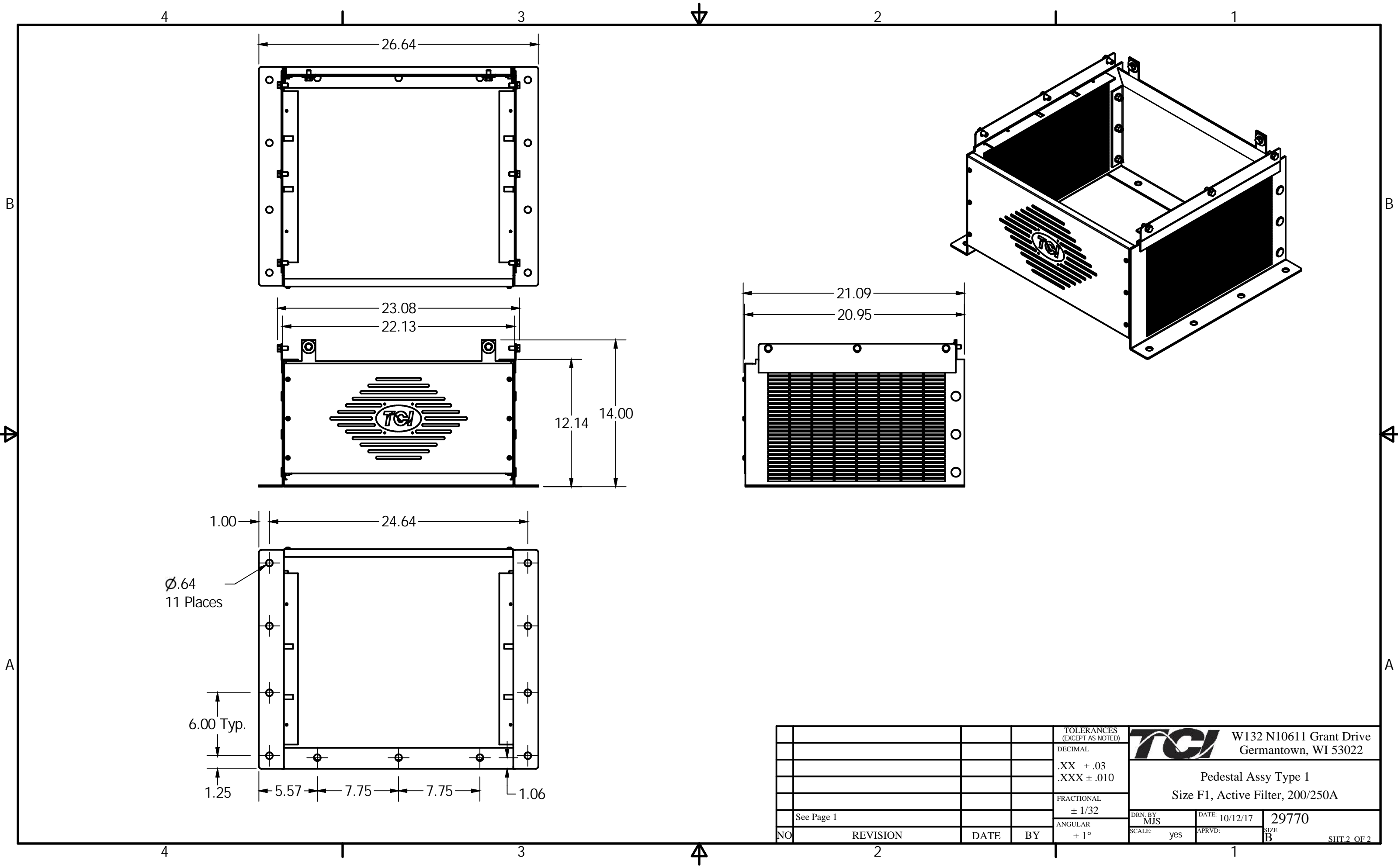
**Assembly Instructions:**


- 1.) Lay the enclosure/filter on its back.
- 2.) Open the door. Caution, the open door should be supported so the weight of the door is not hanging on the hinges.
- 3.) Place the pedestal back #1 on a flat surface, then slide the right & left (#2 & 3) pedestal side studs through the holes in the back. Loosely thread nuts #6 onto the 6 studs.
- 4.) Lift with two hands the assembled sides/back and slide the 2 tabs of the pedestal back #1 through the slots on the enclosure bottom. Secure it to back panel with 3/8 hardware item #'s 9, 10, & 12.
- 5.) Secure the pedestal sides to the enclosure sides with 3/8 inch bolts #10 and lock washer #9.
- 6.) Only finger tighten all 3/8 inch hardware for the sides and back. Once in place, then torque all 3/8 hardware to 250 in-lb.
- 7.) Carefully stand filter up and move into place using the lifting eyes located the top of the enclosure. WARNING: TIPPING HAZARD, assembled unit has high center of gravity, extreme care should be used until the filter is properly anchored to the floor.
- 8.) Anchor unit to floor using the four holes located on each side of the pedestal; refer to installation drawing #106183.
- 9.) Place label #8 on label plate #7. Use nuts #5 to mounting plate on inside of front cover.
- 10.) Install front cover using screws #11. CAUTION, damage can occur to cover by using any lifting devices under the front cover.
- 11.) For pedestal catalog #HGAF01F1.

See Page 2 For General Dimensions

HOLE TOLERANCE ± .005

				TOLERANCES (EXCEPT AS NOTED)		<b>W132 N10611 Grant Drive Germantown, WI 53022</b>	
				DECIMAL			
				.XX ± .03		<b>Pedestal Assy Type 1 Size F1, Active Filter, 200/250A</b>	
				.XXX ± .010			
				FRACTIONAL			
				± 1/32		DRN. BY: MJS	
				ANGULAR		DATE: 10/12/17	
				± 1°		APRVD:	
						29770	
						SCALE: yes	
						APRVD:	
						SIZE: B	
						SHT.1 OF 2	



				TOLERANCES (EXCEPT AS NOTED)		 <b>W132 N10611 Grant Drive Germantown, WI 53022</b>		
				DECIMAL				
				.XX ± .03		<b>Pedestal Assy Type 1 Size F1, Active Filter, 200/250A</b>		
				.XXX ± .010				
				FRACTIONAL ± 1/32				
See Page 1				ANGULAR ± 1°		DRN. BY MJS	DATE: 10/12/17	29770
NO	REVISION	DATE	BY			SCALE: yes	APRVD:	SIZE B
								SHT.2 OF 2