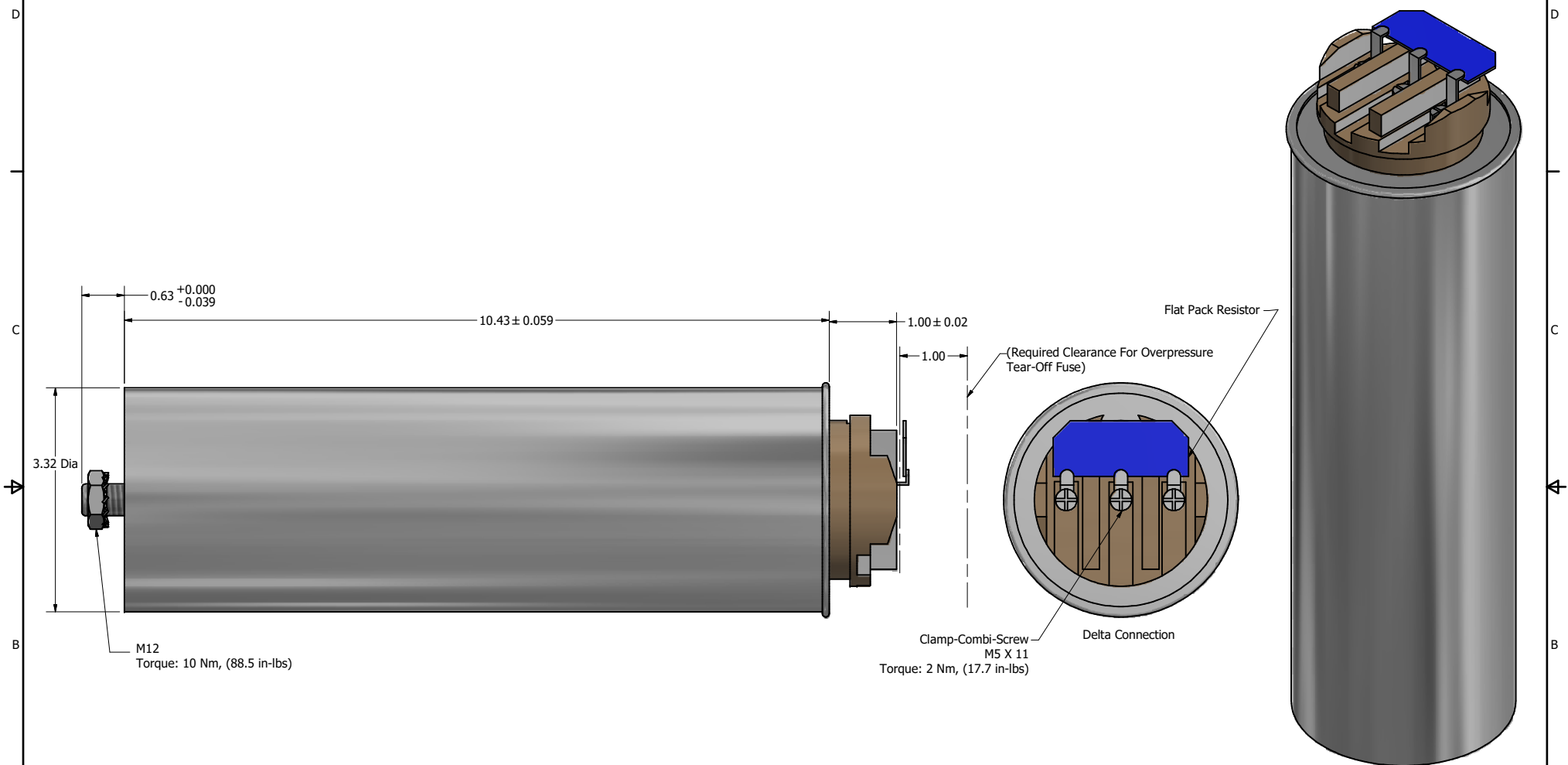


20 kVar, Dry Version, 480V, 60Hz, Vishay.
 3 Phase
 3 * 77uF
 Case Max 65°C
 NON-PCB
 Weight: 2.9LBS



Customer Is Responsible For Installation to Meet All National And Local Electrical Codes.

Material(s) Shall be RoHS Compliant

TCI, LLC CLAIMS PROPRIETARY RIGHTS IN THE MATERIAL HEREIN DISCLOSED. IT IS SUPPLIED WITHOUT PREJUDICE TO ANY PATENT RIGHTS OF TCI AND MAY NOT BE REPRODUCED OR USED TO MANUFACTURE ANYTHING SHOWN THEREIN WITHOUT WRITTEN PERMISSION FROM TCI.					TOLERANCES (EXCEPT AS NOTED) DECIMAL .XX $\pm .03$.XXX $\pm .01$	TCI W132 N10611 Grant Drive Germantown, WI 53022 Cap, 20 kVar, Dry Version, 480V, 60Hz, Vishay
	A	4963, Drawing Updated	11/11/19	DSW	FRACTIONAL $\pm 1/16$	
	NO	REVISION	DATE	BY	ANGULAR $\pm 1^\circ$	
					DRN BY: DSW SCALE: 1:1.1 DATE: 7/25/13 DES: 28541 FILE: C:	SHEET 1 OF 1