

TERMINATION	LOCATION	ALUMINUM MECHANICAL LUG SIZE	TORQUE
PRIMARY	FRONT	2/0-14 AWG	7 FT. LB
SECONDARY	FRONT	2-14 AWG	7 FT. LB

TRANSFORMER SPECIFICATION

- 3 PHASE AUTO
- DRY TYPE
- SELF - COOLED
- SUITABLE FOR NONSINUSOIDAL CURRENT LOAD WITH A K-FACTOR NOT TO EXCEED 35

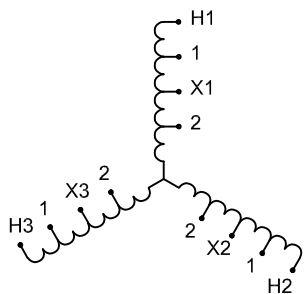
WIRING CONNECTION:

PRIMARY:

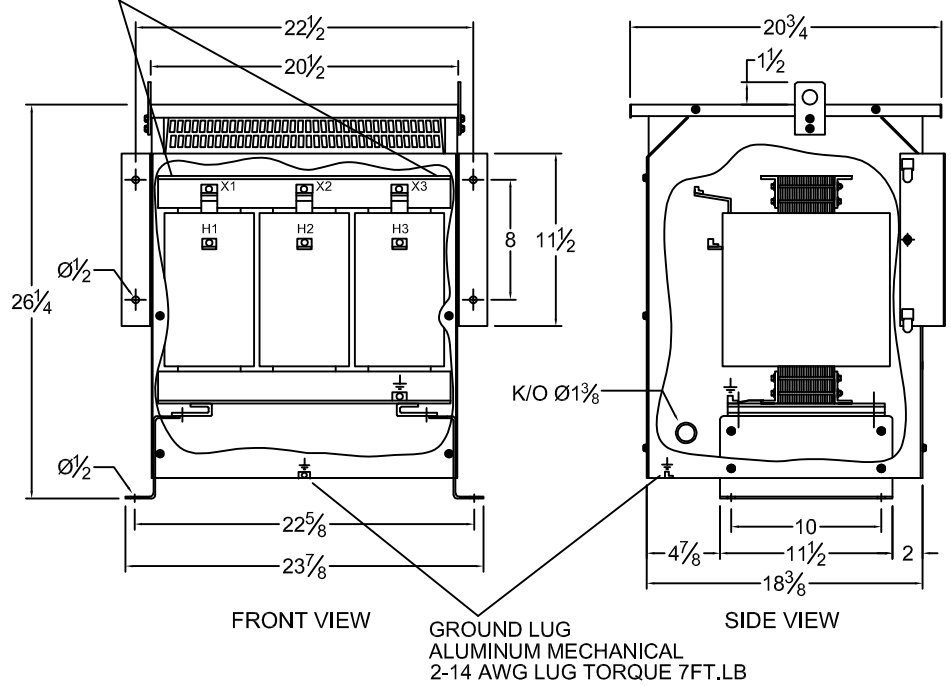
VOLTAGE	% TAPS	CONNECT LINES TO:
504	105.0	1-1-1
480	100.0	X1-X2-X3
456	95.0	2-2-2

SECONDARY:

VOLTAGE	CONNECT LOADS TO:
600	H1-H2-H3



LIFT POINTS AT CORNER FOR CORE & COIL



COIL:	COPPER
CAT.NO.:	
- CORE & COIL CONSTRUCTION:	RC84H-J/C&C/K35/X
- NEMA 3R ENCLOSURE:	RC84H-J/K35/X
KVA:	84
PRIMARY:	480 V
SECONDARY:	600 V
FREQUENCY:	60 HZ
INSULATION CLASS:	220°
TEMPERATURE RISE:	150°
IMPEDANCE:	1% MAX.
REGULATION:	1% MAX.
EXCITATION CURRENT:	< 5%
SOUND LEVEL:	45 db MAX.
WEIGHT:	270 LBS

STANDARDS:

- 1.) CSA CERTIFIED FILE No. LR34493
- 2.) UL FILE No. E108255

SPECIAL FEATURES:

- X = a.) K-35 RATED
 b.) ±5% F.C. TAPS @ 480 V
 c.) NEUTRAL 200% CAPACITY

600V HGA Watts Loss	
HGA Rating	Loss
39A	415W
78A	640W

CSA Enclosure:

1. Type 3R (NEMA 3R)
 - Sprinklerproof when the angle between sprinkler heads and opening in the enclosure does not exceed 45° from the vertical
2. Indoor ventilated
3. ASA 61 Grey
4. Floor/Wall mounting

TCI, LLC CLAIMS PROPRIETARY RIGHTS IN THE MATERIAL HEREIN DISCLOSED. IT IS SUPPLIED WITHOUT PREDJUDICE TO ANY PATENT RIGHTS OF TCI AND MAY NOT BE REPRODUCED OR USED TO MANUFACTURE ANYTHING SHOWN THEREIN WITHOUT WRITTEN PERMISSION FROM TCI.

A	NO	REVISION	DATE	BY	TOLERANCES
					(EXCEPT AS NOTED)
					DECIMAL
					.XX ± .03
					.XXX ± .010
					FRACTIONAL
					± 1/32
					ANGULAR
					± 1°

TCI® W132 N10611 Grant Drive
 Germantown, WI 53022

**XFMR, 84kVA,
 480 V Pri, 600 V Sec, Type 3R**

DRN. BY	MJS	DATE	10/5/16	DWG. NO.	28420
SCALE	1:1	SIZE	A	SHT. 1 OF 1	