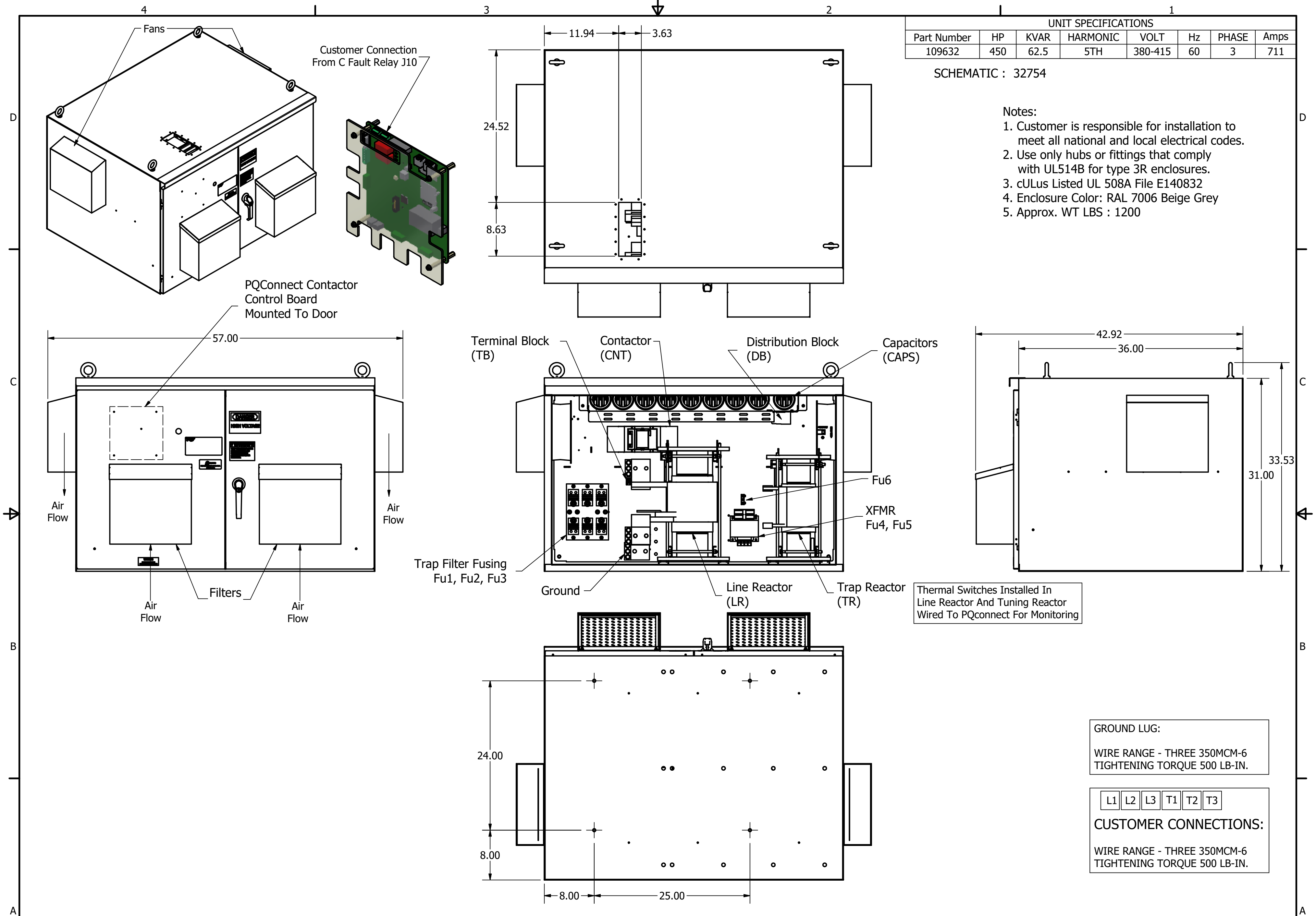


UNIT SPECIFICATIONS							
Part Number	HP	KVAR	HARMONIC	VOLT	Hz	PHASE	Amps
109632	450	62.5	5TH	380-415	60	3	711

SCHEMATIC : 32754

Notes:

1. Customer is responsible for installation to meet all national and local electrical codes.
2. Use only hubs or fittings that comply with UL514B for type 3R enclosures.
3. cULus Listed UL 508A File E140832
4. Enclosure Color: RAL 7006 Beige Grey
5. Approx. WT LBS : 1200




Thermal Switches Installed In Line Reactor And Tuning Reactor Wired To PQconnect For Monitoring

GROUND LUG:  
WIRE RANGE - THREE 350MCM-6  
TIGHTENING TORQUE 500 LB-IN.

L1	L2	L3	T1	T2	T3
----	----	----	----	----	----

CUSTOMER CONNECTIONS:  
WIRE RANGE - THREE 350MCM-6  
TIGHTENING TORQUE 500 LB-IN.

THE INFORMATION AND DESIGNS CONTAINED IN THIS DRAWING ARE CONFIDENTIAL AND THE PROPRIETARY PROPERTY OF ALLIED MOTION TECHNOLOGIES INC. AND ITS SUBSIDIARIES. NEITHER THIS DESIGN NOR ANY INFORMATION CONTAINED IN THIS DRAWING MAY BE REPRODUCED OR DISCLOSED TO OTHERS WITHOUT THE EXPRESS WRITTEN CONSENT OF ALLIED MOTION TECHNOLOGIES INC. AND ITS SUBSIDIARIES.				TOLERANCES (EXCEPT AS NOTED)	 W132N10611 Grant Drive Germantown, WI 53022 © 2024 TCI, LLC HarmonicGuard Low Capacitance 450HP, 380-415/3/60, Type 3R, JCI, PQconnect
				DECIMAL	
				.XX ± .25 .XXX ± .10	
				FRACTIONAL ± 1/16	
	A As Designed	08/12/24	JRN	ANGULAR ± 1°	DRN BY: JRN DATE: 08/12/24 SCALE: 1/10 APRVD: [Signature]
	NO REVISION	DATE	BY		109632DG SIZE C SHT. 1 OF 1