

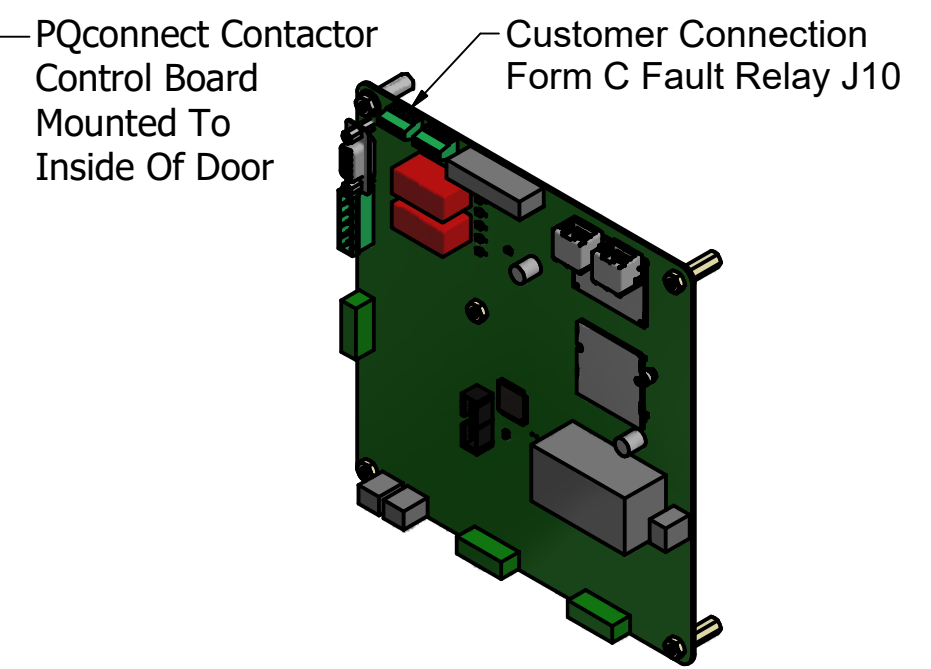
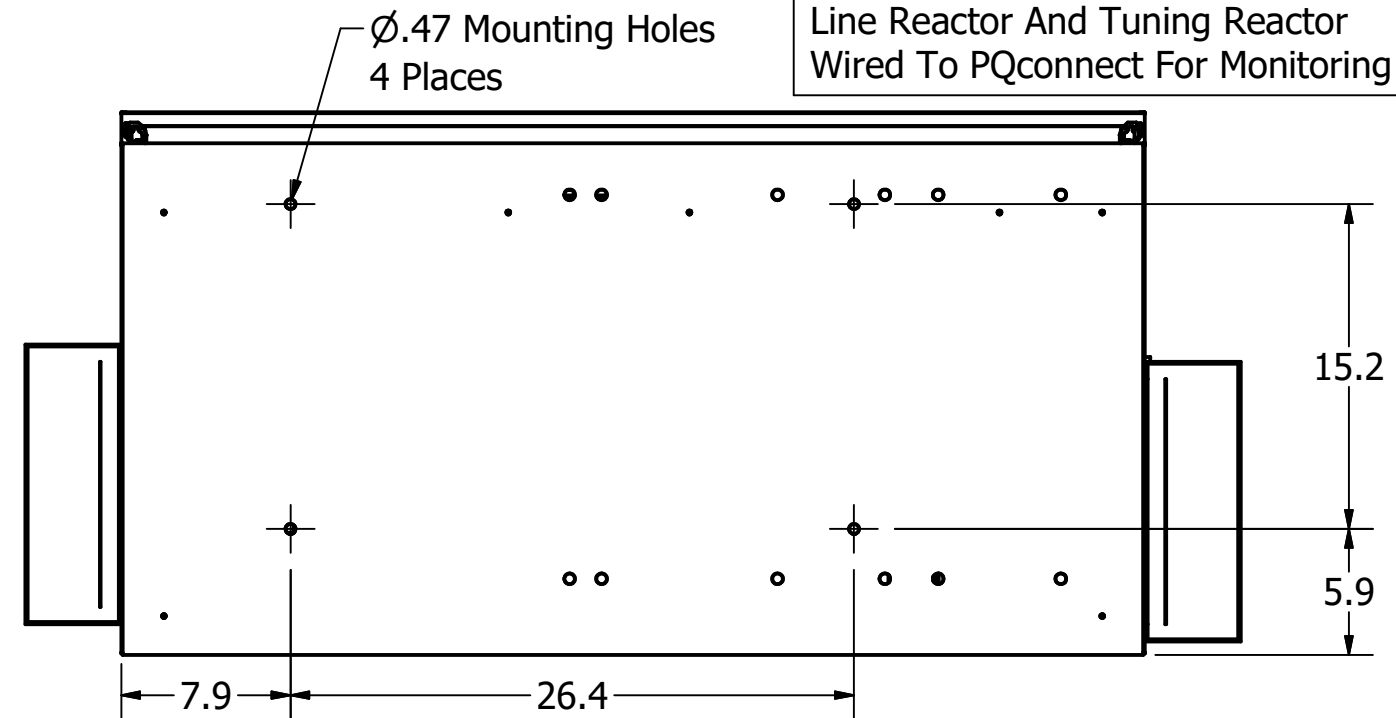
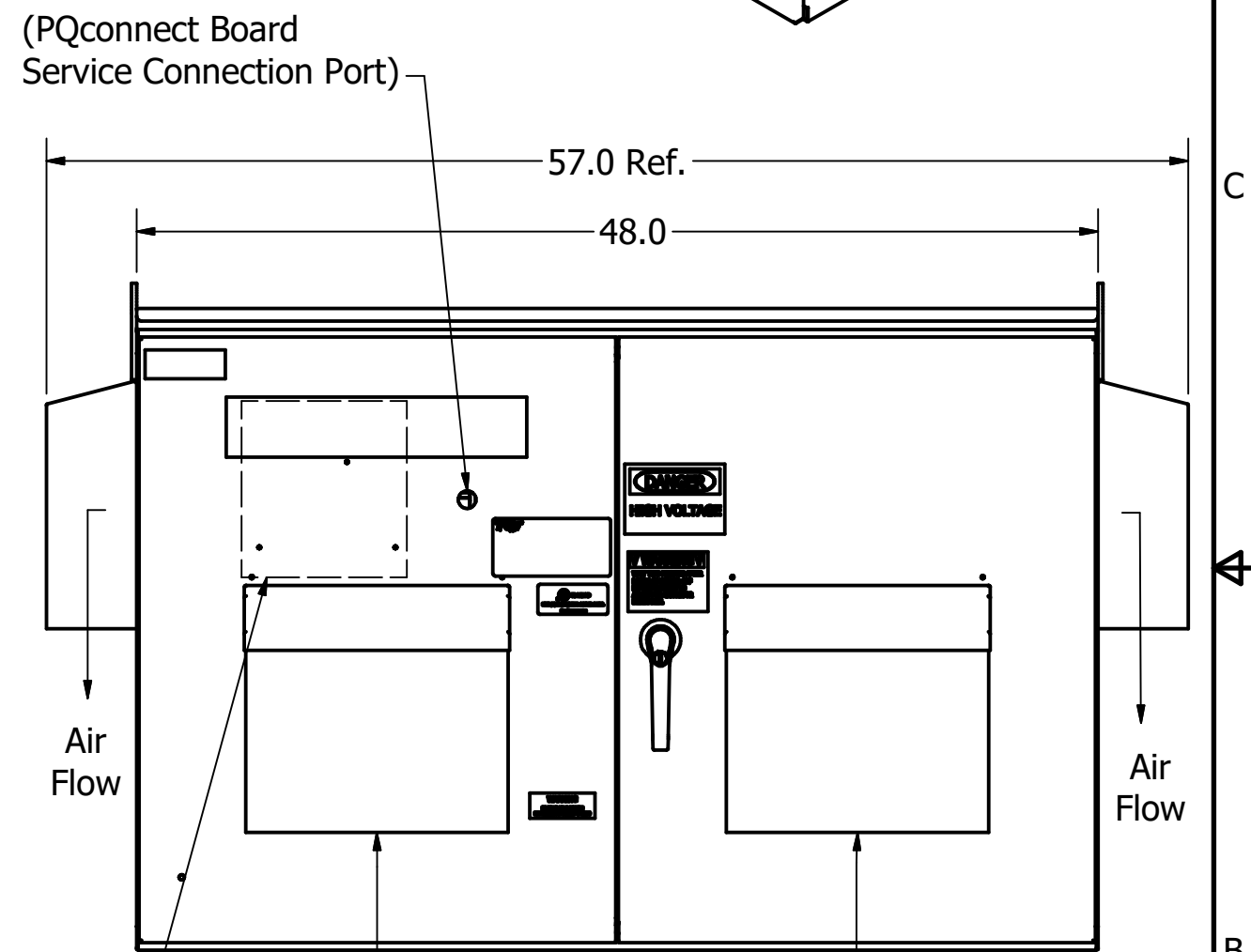
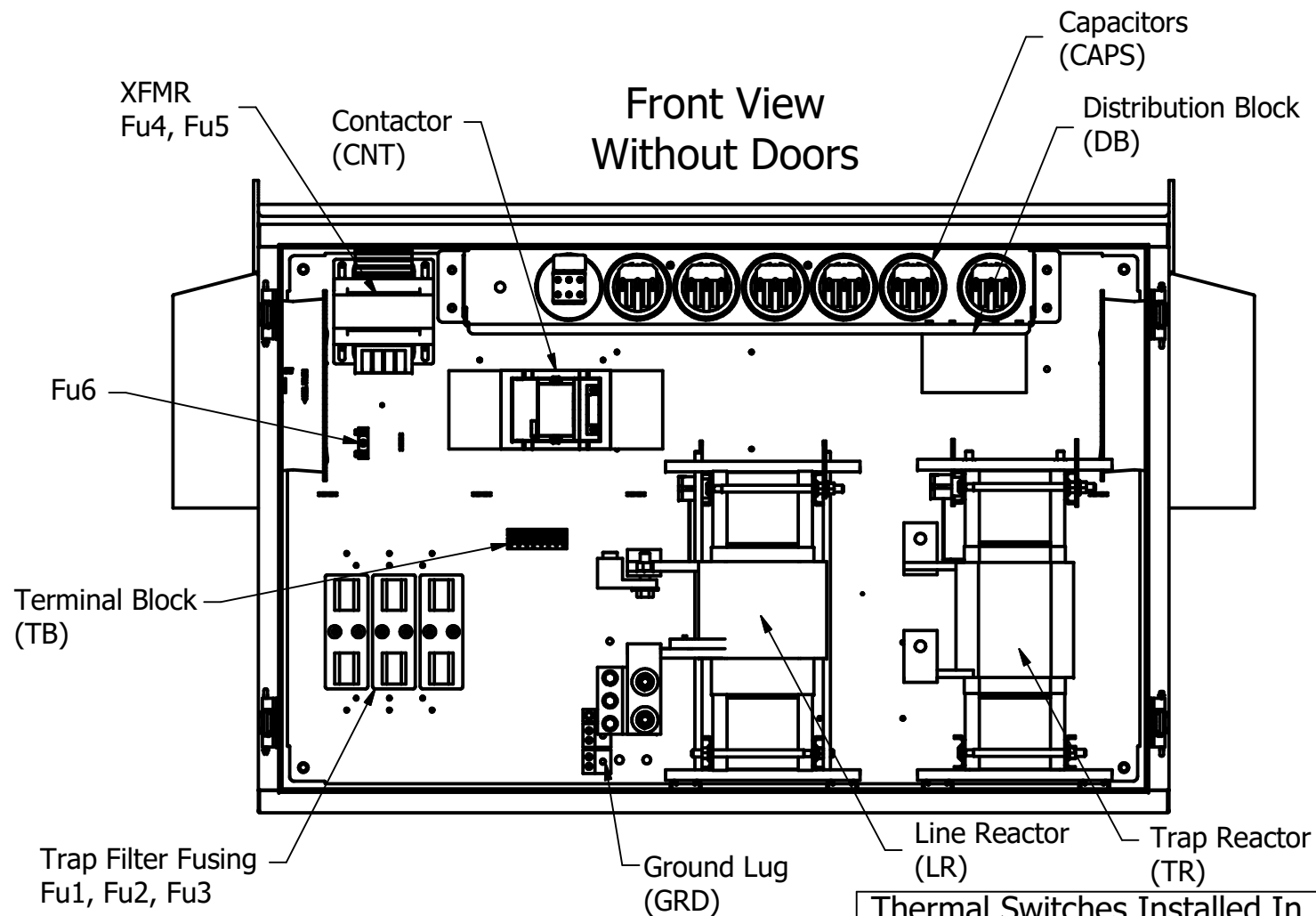
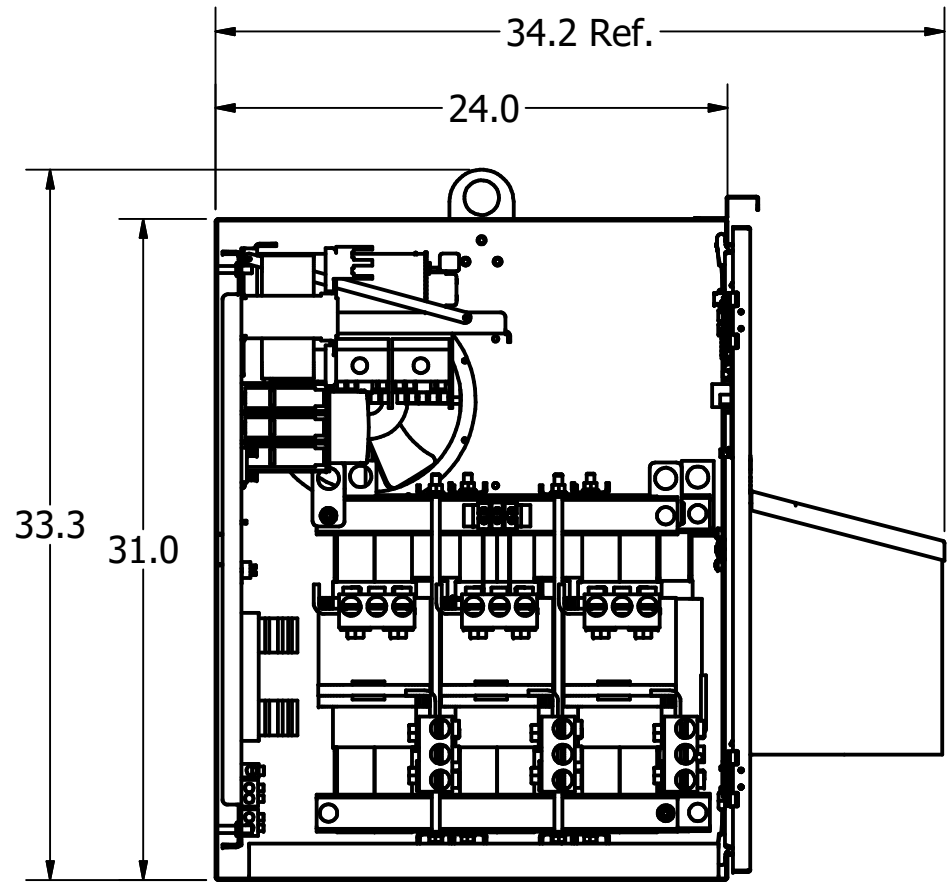
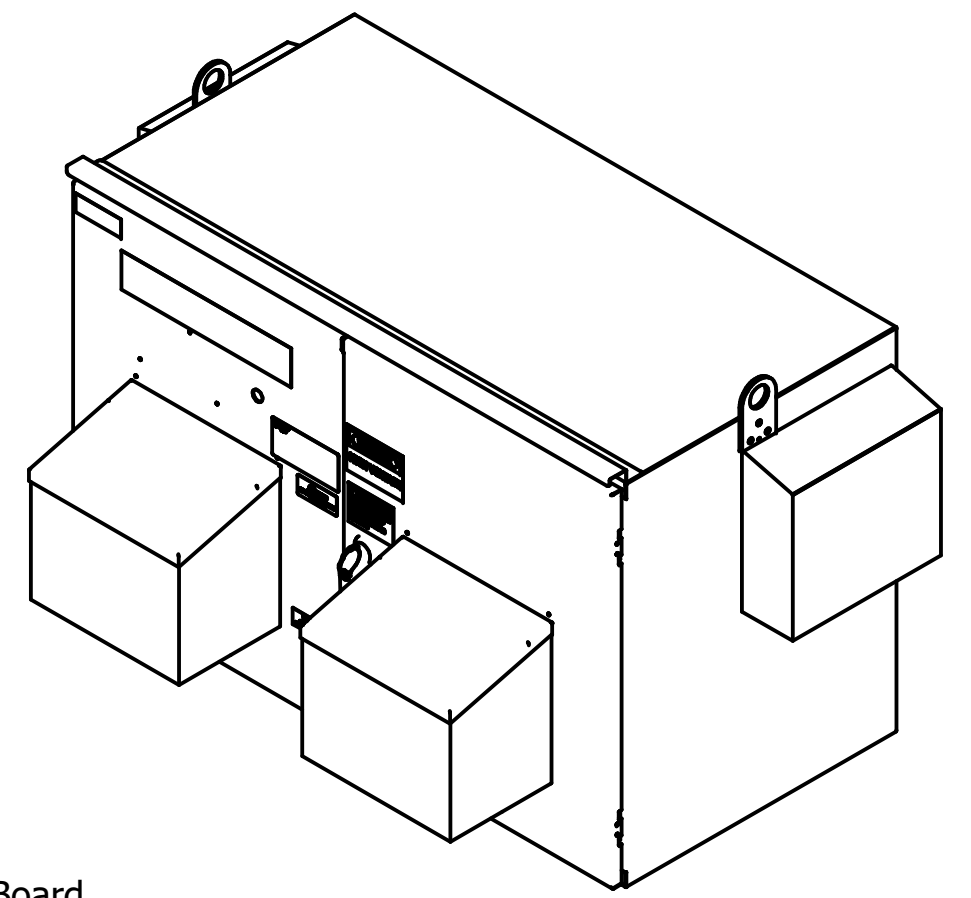
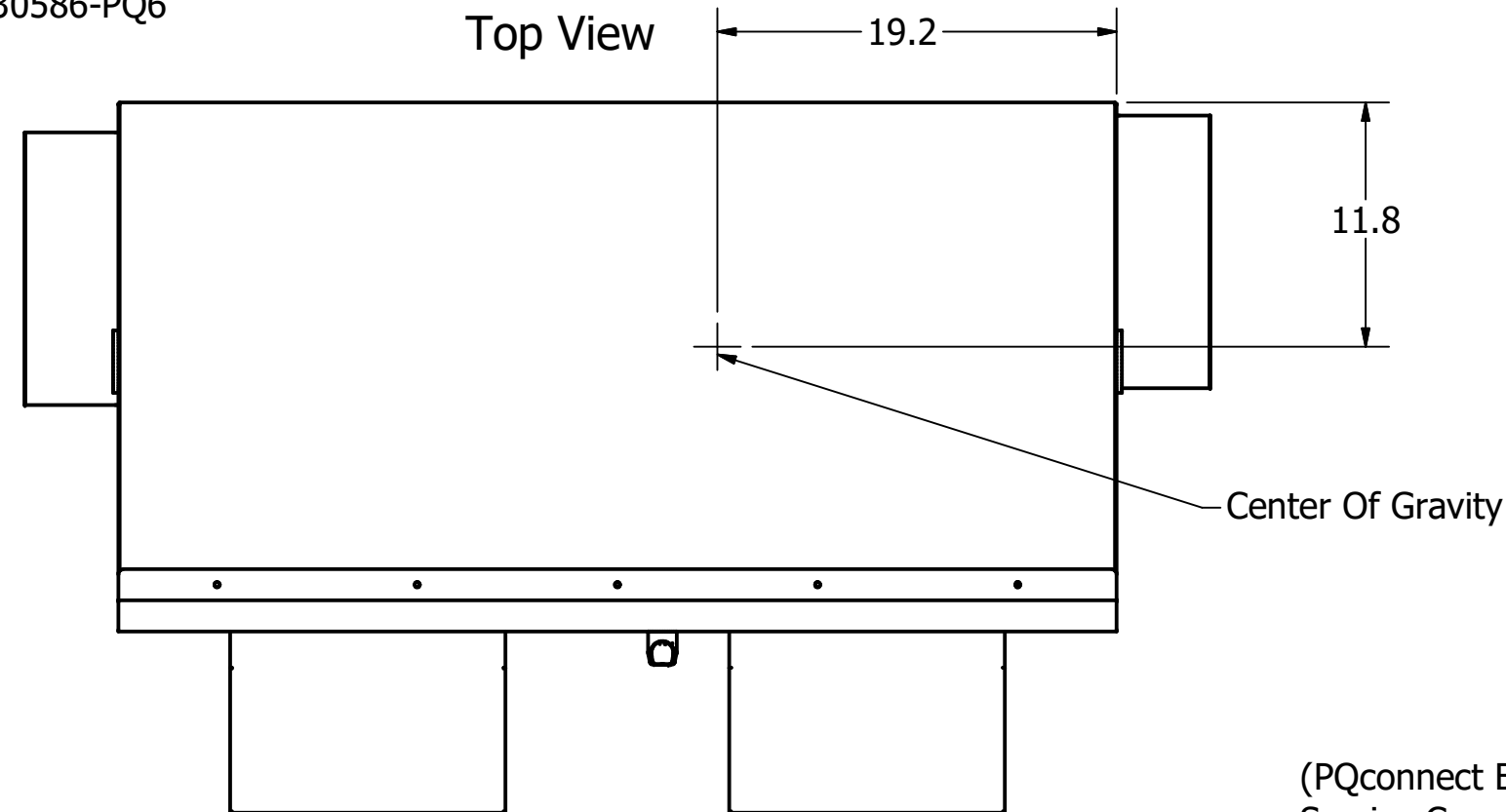
**GROUND LUG:**  
 WIRE RANGE - FIVE 2/0-14AWG  
 TIGHTENING TORQUE 50 LB-IN.


**CUSTOMER CONNECTIONS:**  
 WIRE RANGE - THREE 600MCM-2  
 TIGHTENING TORQUE 500 LB-IN.

UNIT SPECIFICATIONS						
KVAR	HARMONIC	VOLT	Hz	PHASE	HP	AMPS
68	5TH	480	60	3	550	655

SCHEMATIC : 30586-PQ6

- Notes:**
- Customer is responsible for installation to meet all national and local electrical codes.
  - Use only hubs or fittings that comply with UL514B for type 3R enclosures.
  - Approx. WT LBS : 950
  - Enclosure Color: ANSI-61 Gray
  - PQconnect Programming Model: Custom Unit HGL0550AWxC1xxxELC



THE INFORMATION AND DESIGNS CONTAINED IN THIS DRAWING ARE CONFIDENTIAL AND THE PROPRIETARY PROPERTY OF ALLIED MOTION TECHNOLOGIES INC. AND ITS SUBSIDIARIES. NEITHER THIS DESIGN NOR ANY INFORMATION CONTAINED IN THIS DRAWING MAY BE REPRODUCED OR DISCLOSED TO OTHERS WITHOUT THE EXPRESS WRITTEN CONSENT OF ALLIED MOTION TECHNOLOGIES INC. AND ITS SUBSIDIARIES.				TOLERANCES (EXCEPT AS NOTED) DECIMAL .XX ± .25 .XXX ± .10 FRACTIONAL ± 1/16 ANGULAR ± 1°		 W132N10611 Grant Drive Germantown, WI 53022 © 2023 TCI, LLC Multistack, HGL, 550HP, 480/3/60, 3R CNT+PQ, Low Profile, 2 T/S, Spel Low C	
A	As Designed	03/16/23	JRN	DRN BY	DATE	109395DG	SCALE
NO	REVISION	DATE	BY	SCALE	APRVD:	SIZE	SHT. 1 OF 1