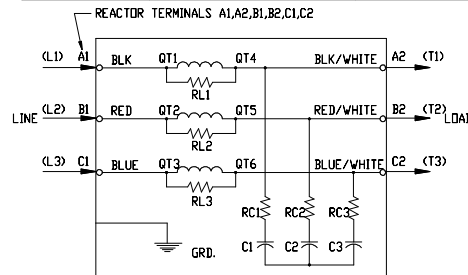


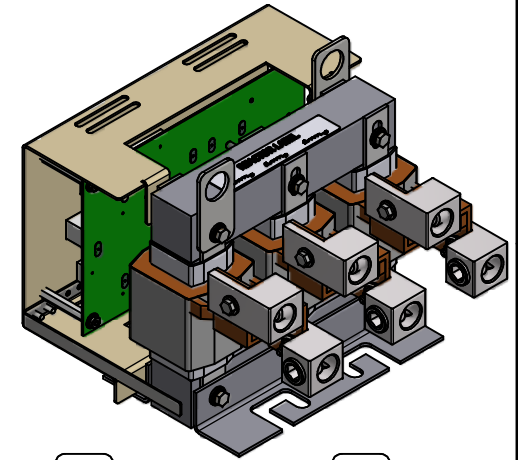
See V1K Installation Guide For Terminal Wire Size And Torque Information.
 Note: Maintain Clearance of 3 Inches On All Sides To Other Equipment.

V1K Part Number	Max Voltage	Amps	Phase	Weight (LBS)
V1K200A00X3	600	200	3	60
V1K250A00X2	600	250	3	65

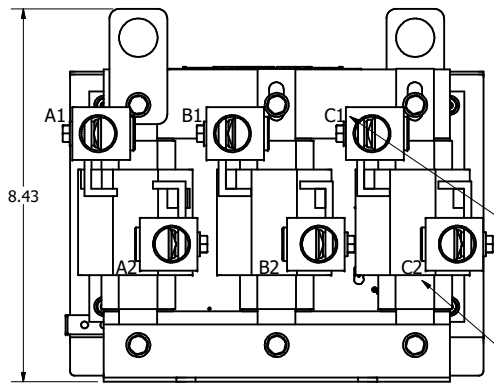
Conductor Range	Wire Size, Copper (Solid to Semi-rigid Stranded)	Wire Size Flex Copper	Tightening Torque
500kcmil-4AWG	500-4	350-4	500 lb-in (56.5 N-m)



REACTOR AND BOARD ASSEMBLY CONNECTIONS

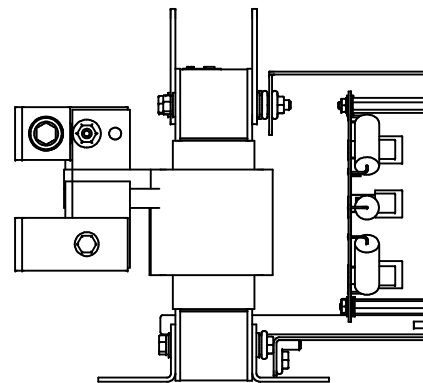


Front View



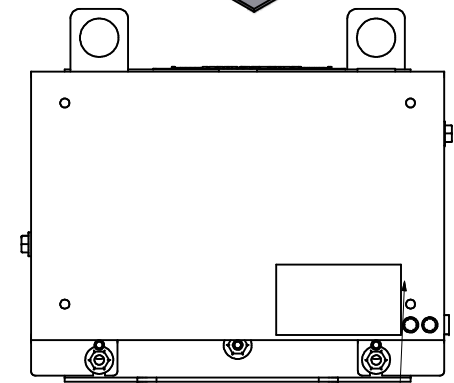
(Customer Connections) Markings On Coil For Reference Only.

Top Of V1K

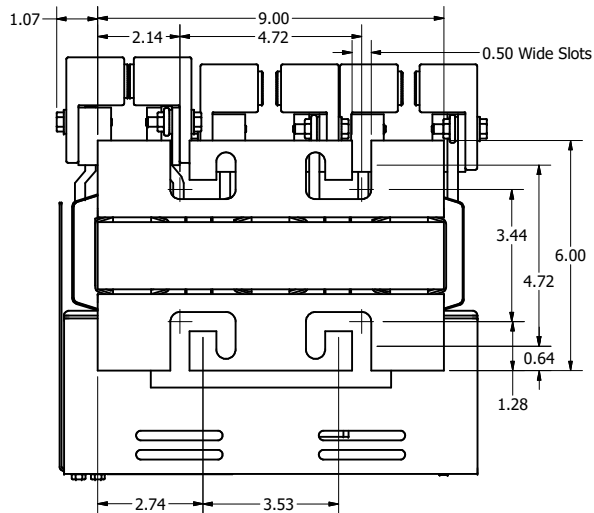


Mounting Orientation-Up

Bottom Of V1K



V1K Decal



Customer Is Responsible For Installation to Meet All National And Local Electrical Codes.
 Material(s) Shall be RoHS Compliant

THE INFORMATION AND DESIGNS CONTAINED IN THIS DRAWING ARE CONFIDENTIAL AND THE PROPRIETARY PROPERTY OF ALLIED MOTION TECHNOLOGIES INC. AND ITS SUBSIDIARIES. NEITHER THIS DESIGN NOR ANY INFORMATION CONTAINED IN THIS DRAWING MAY BE REPRODUCED OR DISCLOSED TO OTHERS WITHOUT THE EXPRESS WRITTEN CONSENT OF ALLIED MOTION TECHNOLOGIES INC. AND ITS SUBSIDIARIES.

NO	REVISION	DATE	BY	SCALE
A	As Designed	1/21/2022	DSW	1/2

TOLERANCES (EXCEPT AS NOTED)		SCALE	
DECIMAL	.XX ± .25 .XXX ± .10	1/2	1/2
FRACTIONAL	± 1/16	200 Amps And 250 Amps	
ANGULAR	± 1°	V1K Open	
DESIGNED BY: DSW		DATE: 1/21/2022	REVISED BY: DSW
DRAWN BY: DSW		DATE: 1/21/2022	REVISED BY: DSW
PART NUMBER: 109088DG		SHEET: 1 OF 1	

