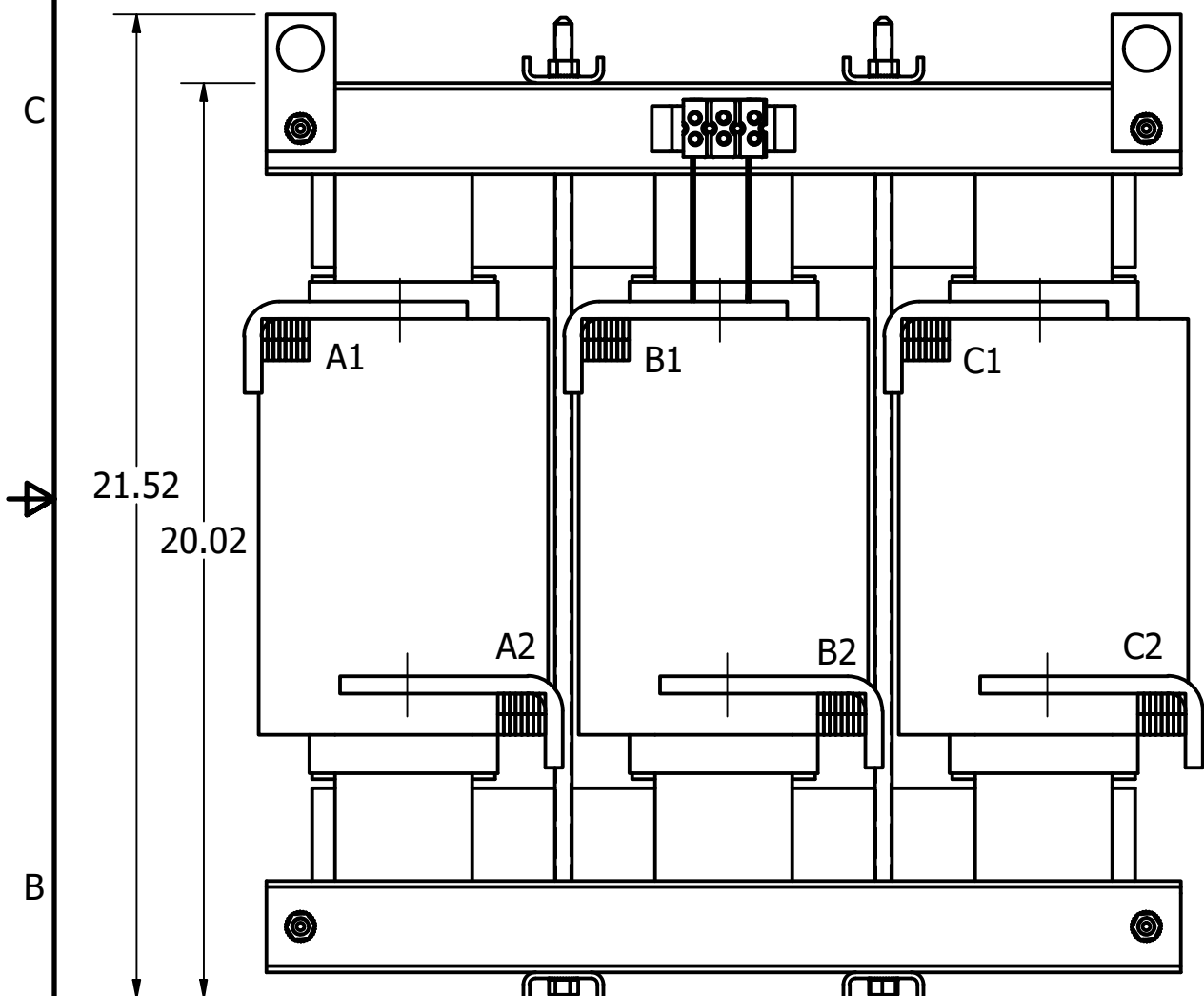
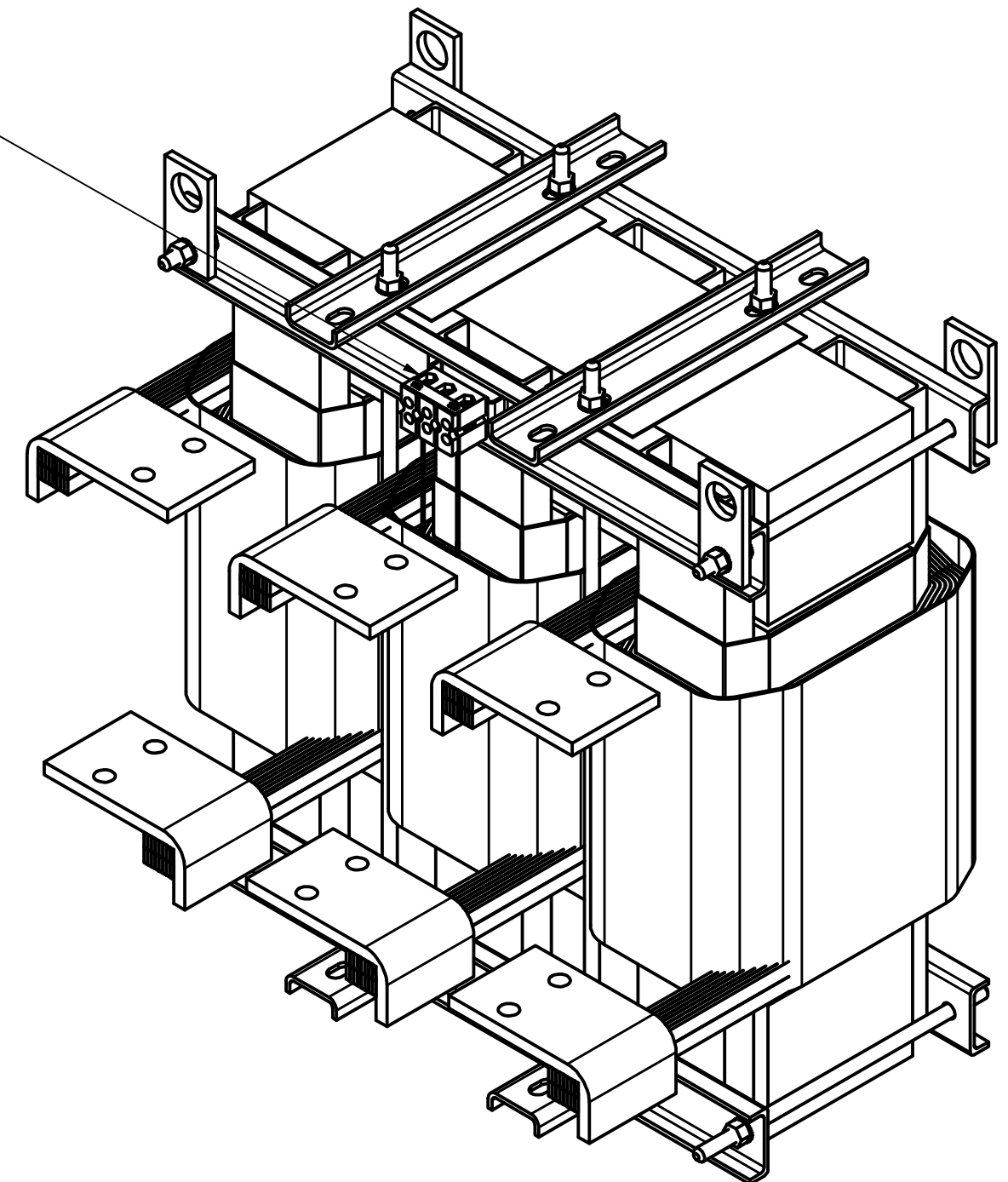
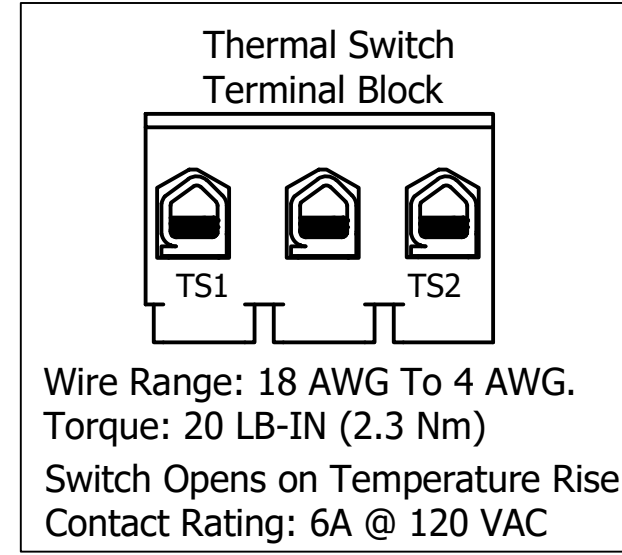
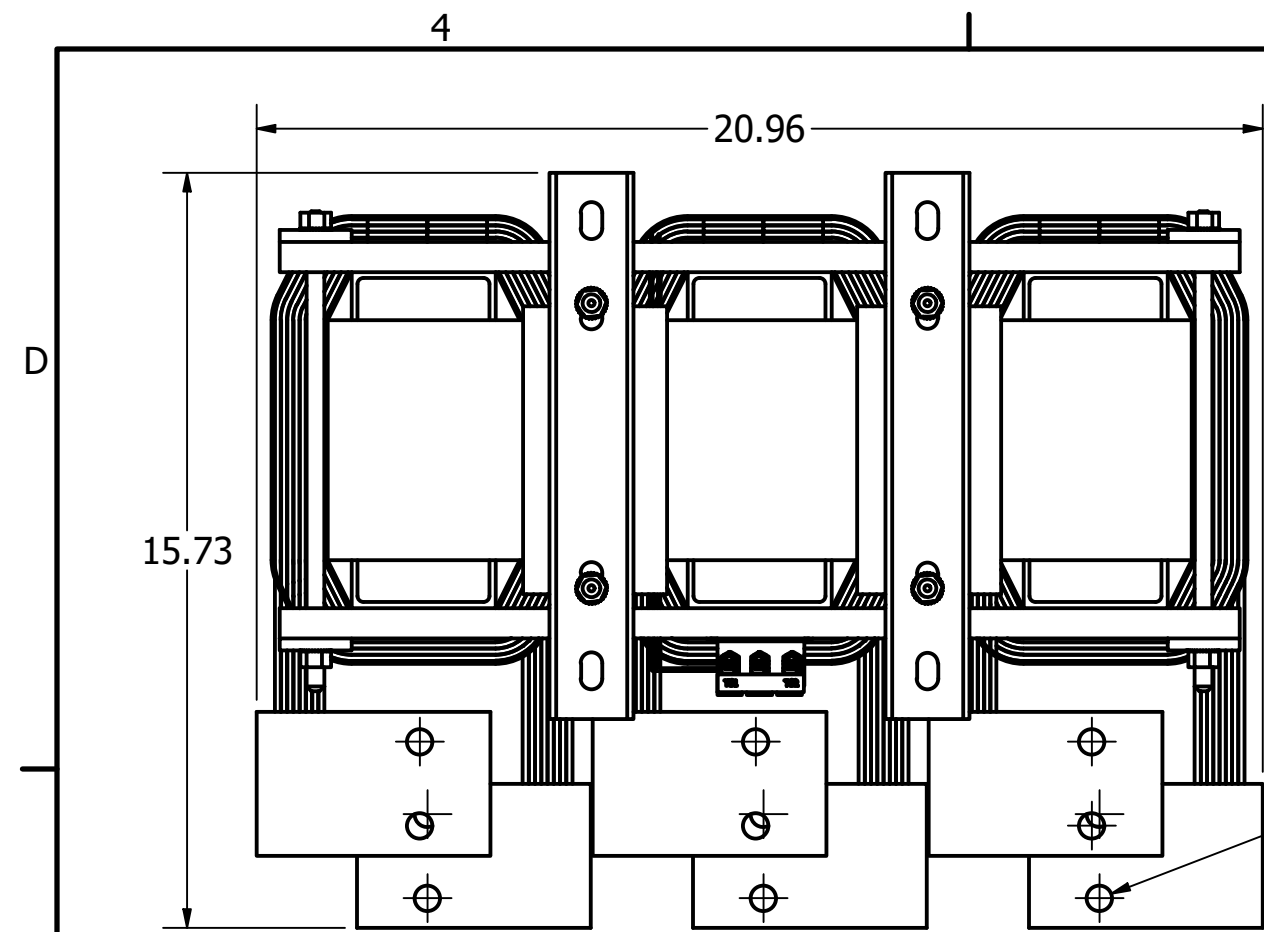
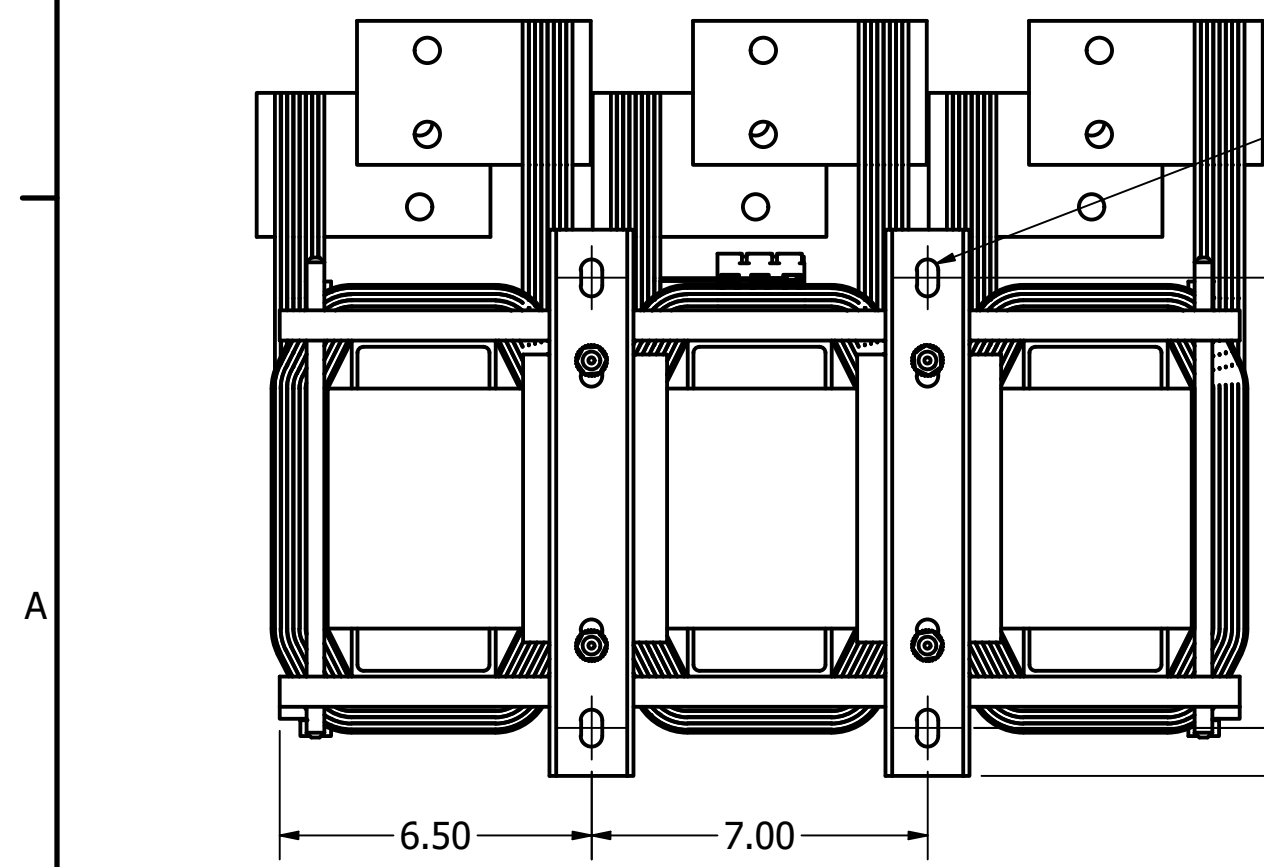
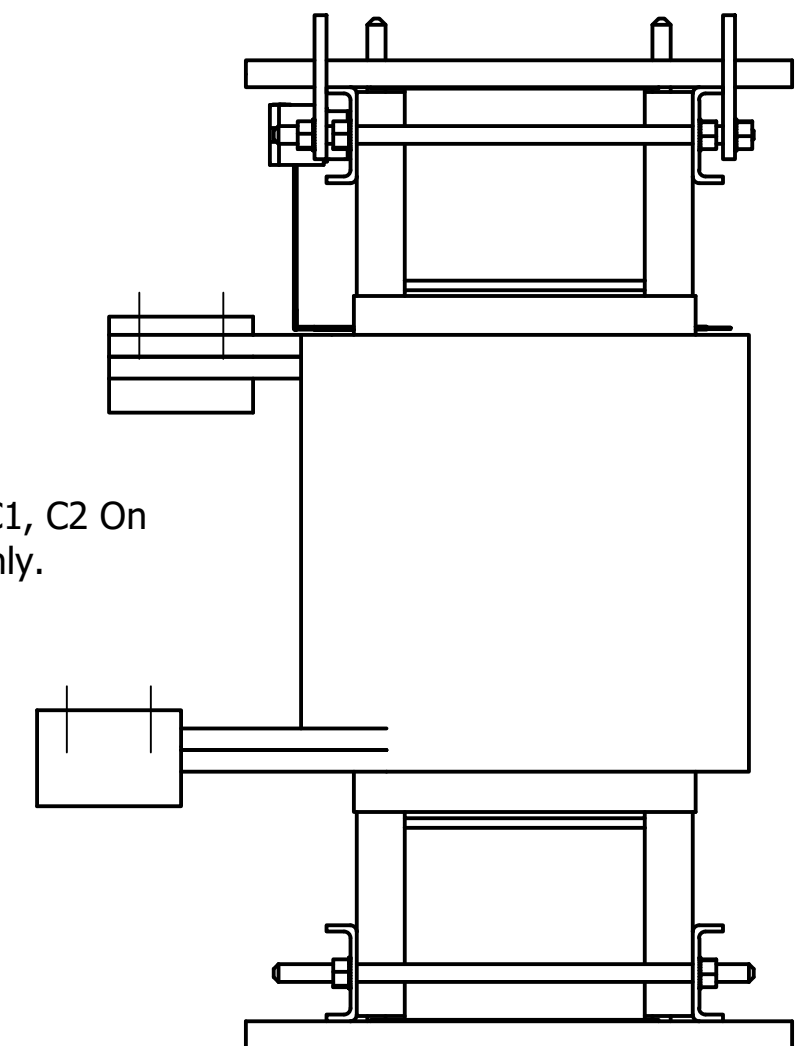


TCI Part#	Rated Amps (A)	Rated Voltage (V)	Hz	--uH ±5%	Approx Weight (LBS)
KTRMG850C	850	600	60	70	600



Note: Markings A1, A2, B1, B2, C1, C2 On Coils Are For Reference Only.



THE INFORMATION AND DESIGNS CONTAINED IN THIS DRAWING ARE CONFIDENTIAL AND THE PROPRIETARY PROPERTY OF ALLIED MOTION TECHNOLOGIES INC. AND ITS SUBSIDIARIES. NEITHER THIS DESIGN NOR ANY INFORMATION CONTAINED IN THIS DRAWING MAY BE REPRODUCED OR DISCLOSED TO OTHERS WITHOUT THE EXPRESS WRITTEN CONSENT OF ALLIED MOTION TECHNOLOGIES INC. AND ITS SUBSIDIARIES.

TOLERANCES (EXCEPT AS NOTED)			
DECIMAL	.XX ± .25	.XXX ± .10	
FRACTIONAL	± 1/16		
ANGULAR	± 1°		

Material(s) Shall be RoHS Compliant

W132N10611 Grant Drive
Gemantown, WI 53022
© 2021 TCI, LLC

Sinewave Reactor
KTRMG850C, 600V, 850 Amps

DRN BY: JRN	DATE: 04/06/21	108905DG
SCALE: 1/4	APRVD:	SIZE: C

SHT. 1 OF 1

4

3

2

1

4

3

2

1